



Dec. 13, 2017 • Week 6
GNACSports.com • @GNACSports

Contact: Rhys Lendio, Media Relations Assistant
503-305-8756 • rlendio@gnacsports.com

2017-18 GNAC Women's Basketball Standings

	GNAC			Overall			Home	Away	Neutral	Streak
	W	L	Pct.	W	L	Pct.				
Alaska Anchorage	3	0	1.000	9	0	1.000	5-0	2-0	2-0	Won 9
Montana State Billings	2	0	1.000	9	0	1.000	7-0	1-0	1-0	Won 9
Seattle Pacific	2	1	.667	7	1	.875	2-0	3-1	2-0	Won 2
Northwest Nazarene	1	1	.500	5	2	.714	1-0	3-2	1-0	Lost 1
Concordia	1	1	.500	6	3	.667	4-1	0-2	2-0	Won 1
Western Oregon	1	1	.500	5	3	.625	4-1	1-2	0-0	Lost 3
Central Washington	1	1	.500	5	4	.556	3-1	2-2	0-1	Won 2
Western Washington	1	1	.500	4	4	.500	2-1	1-2	1-1	Lost 1
Saint Martin's	1	2	.333	5	5	.500	1-0	3-2	1-3	Lost 1
Simon Fraser	0	2	.000	4	4	.500	2-1	1-2	1-1	Lost 2
Alaska	0	3	.000	2	5	.286	1-3	0-1	1-1	Lost 3

LAST WEEK'S GAMES

Fri., Dec. 8
at MSU Billings 62, Rocky Mountain 57

Sat., Dec. 9
at Concordia 78, Warner Pacific 47
at Seattle Pacific 81, Saint Martin's 66*
at MSU Billings 87, Providence (Mont.) 65
Alaska Anchorage 88, at Alaska 56*

THIS WEEK'S GAMES

Mon., Dec. 11
at Oregon Tech 59, Western Oregon 53

Tues., Dec. 12
Central Washington 81, at Academy of Art 69
at Southern Oregon 77, Western Oregon 67

Wed., Dec. 13
Seattle Pacific at Concordia (Calif.), 6 p.m.

Thurs., Dec. 14
Central Washington at Dominican (Calif.), 5:30 p.m.

Sat., Dec. 16
MSU Billings vs. Drury (at Honolulu), 9 a.m.
Alaska Anchorage at Notre Dame de Namur, 5:30 p.m.
Multnomah at Alaska, 7 p.m.

Sun., Dec. 17
MSU Billings vs. Harding (at Honolulu), 9 a.m.
Multnomah at Alaska, 3 p.m.

* - denotes GNAC games
All start times local to game site.

#GNACWBB in 140 @GNACSports

#Montana'sMust-See For the second straight week, Montana State Billings senior forward **Alisha Breen** is the GNAC Player of the Week after averaging 24.5 points in a pair of games against in-state rivals. The award is her third of the season.

#AlaskasGreenAndGold Playing in one of the two GNAC contests last week, Alaska Anchorage improved to 9-0 after taking down Alaska to earn its third conference victory of the season.

#ClimbingCavs Concordia ended its five-game homestand with a 78-47 win over Warner Pacific on Saturday. During the five games, the Cavs went 4-1 and outscored their opponents 355-272.

#WestRegionDominance Five GNAC teams are ranked within the top-10 while two more receive votes in the D2SIDA West Region Poll.

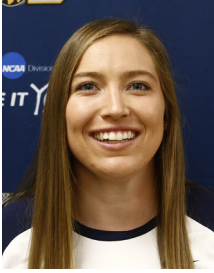
#Pre-ChristmasSlate The GNAC will be busy prior to the holiday festivities with 17 contests from today until Dec. 19. The 2017-18 non-conference schedule will end when action resumes on Dec. 28 when Concordia hosts Pacific (Ore.).

Get Social

Twitter Accounts/Hashtags For GNAC Men's Basketball Programs

GNAC	@GNACSports	#GNACWBB
Alaska	@AlaskaNanooks	#NanookNation
Alaska Anchorage	@UAASeawolves	#SeawolfHoops
Cent. Washington	@CWUAthletics	#ClawsOut
Concordia	@gocugo	#gocugo
MSU Billings	@MSUBSports	#MSUBMBB
NW Nazarene	@NNUSports	
Saint Martin's	@SMUSaints	#SaintsAlive
Seattle Pacific	@SPUFalcons	
Simon Fraser	@SFUClan	#NCAAeh
Western Ore.	@WOUWolves	#WOUWolves
Western Wash.	@WWUAthletics	#GoViks

GNAC Women's Basketball Player of the Week



Alisha Breen
Montana State Billings
F • 5-10 • Senior • Choteau, Mont.

Breen scored 49 points, shot 62.5 percent from the field and made 15 of 16 from the free throw line as she led MSUB to two wins as the Yellowjackets improved to 9-0 on the season. She finished with 23 points and 10 rebounds in Friday's 62-57 come-from-behind win over Rocky Mountain, scoring 14 of those points in the final five minutes of the game. Breen then finished with 26 points in Saturday's 87-65 win over Providence (Mont.), her fourth 20-plus point

performance in a row. During the game, Breen broke MSUB's career free throws made record.

Also Nominated: Bailey Cartwright (Concordia), Saniah Simpson-Patu (Saint Martin's).

Past GNAC Players of the Week

Date	Player
Nov. 7-13	Alisha Breen, MSUB Hannah Wandersee, UAA
Nov. 14-20	Jordan McPhee, SPU
Nov. 21-27	Shelby Cloninger, UAA
Nov. 28-Dec. 4	Alisha Breen, MSUB
Dec. 5-Dec. 12	Alisha Breen, MSUB

Complete Player of the Week releases are available online at GNACSports.com.

Around The GNAC

BREEN DOES IT AGAIN: For the second week in a row and third time this season, Montana State Billings senior forward **Alisha Breen** has been named the GNAC Women's Basketball Player of the Week after leading the Yellowjackets to two non-conference wins against in-state opponents last week.

Breen scored 49 points, shot 62.5 percent from the field and made 15 of 16 from the free throw line as she continues to lead MSUB to the best start in program history at 9-0. She finished with 23 points and 10 rebounds in Friday's 62-57 come-from-behind win over Rocky Mountain, scoring 14 of those points in the final five minutes of the game. Breen then finished with 26 points in Saturday's 87-65 win over Providence (Mont.), her fourth 20-plus point performance in a row. During the game, Breen broke MSUB's career free throws made record.

HERE COME THE CAVS: Watch out for red-hot Concordia. Over their recent five-game homestand, which was punctuated with a dominant 78-47 win over Warner Pacific, the Cavs have gone 4-1 and have outscored opponents 355-272.

During the run, Concordia defeated Humboldt State, Multnomah, Seattle Pacific and Warner Pacific. Its sole loss came in a 74-65 contest against Saint Martin's on Dec. 2. Senior guard **Danielle Hartzog** led the team with 14.5 points per game while junior forward **Bailey Cartwright** totaled 12.8 points per game while pulling down 9.4 rebounds per game during the stretch. Sophomore guard **Kizzah Maltezo** has been superb off the bench in the Cavs' last five games, averaging 11.4 points per game.

Concordia resumes GNAC action on Tues., Dec. 19 at Northwest Nazarene. After a few days off for Christmas, the Cavs return home to take on Pacific (Ore.) in the final non-conference game of the GNAC season.

ONE (ACTION-PACKED) WEEK BEFORE THE BREAK: Fasten your seatbelt because a plethora of games will be in play before the NCAA Division II mandated winter break period from Dec. 20-27. With Seattle Pacific and Central Washington taking on California opposition before the weekend, Montana State Billings will be in Hawaii for the Oahu Christmas Classic while Alaska hosts Multnomah for a couple of games at the Alaska Airlines Court.

Simon Fraser and Western Washington begin the two-day Vikings Holiday Hoops Classic next week against No. 3 West Texas A&M and Texas A&M-International while No. 2 Alaska Anchorage travels to Notre Dame de Namur and Sonoma State. The period is capped off with a pair of conference games hosted by Northwest Nazarene and Central Washington. Concordia takes on the Night-hawks while Western Oregon travels to Ellensburg, Wash., looking to secure its second conference win of the season. Saint Martin's ends the week as hosts to Oklahoma Christian.

ALL-TOURNAMENT TEAMS: The following GNAC players have been selected to all-tournament teams during the 2017-18 season...

Stanislaus State CCAA/GNAC Challenge (Nov. 10-11, Turlock, Calif.): Raquel Jardine, NNU (Most Valuable Player), Lexi Tubbs, NNU, Bailey Cartwright, CU.

West Region Tip-Off Classic (Nov. 10-11, San Francisco, Calif.): Alisha Breen, MSUB (Most Valuable Player), Vanessa Stavish, MSUB.

Azusa Pacific West Region Crossover Classic (Nov. 17-18, Azusa, Calif.): Jordan McPhee, SPU; Courtney Hollander, SPU, Hannah Stipanovich, WWU.

Seawolf Hoops Classic (Nov. 17-18, Anchorage, Alaska): Hannah Wandersee, UAA (Most Valuable Player), Yazmeen Goo, UAA, Ashlie Blackburn, UAF, Rodericka Ware, UAA.

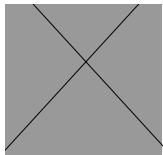
Yellowjacket Classic (Nov. 16-18, Billings, Mont.): Alisha Breen, MSUB (Most Valuable Player), Danielle Hartzog, CU, Bailey Cartwright, CU, Rylee Kane, MSUB, Rachel Koehler, MSUB.

GCI Great Alaska Shootout (Nov. 21-23, Anchorage, Alaska): Shelby Cloninger, UAA (Most Valuable Player), Hannah Wandersee, UAA, Yazmeen Goo, UAA.

Lynda Goodrich Classic (Nov. 24-25, Bellingham, Wash.): Hannah Stipanovich, WWU, Gracie Castaneda, WWU, Elin Johansson, SMU.

Around The GNAC

ALASKA



- Playing in one of the two conference games last week, Alaska fell to its in-state rival Alaska Anchorage 88-56.
- Sophomore guard **Lexi Carpenter** was the only Nanook to score in double figures with 18 points in a game-high 37 minutes of action. She shot 50 percent (6-12) from the floor, three of which came from behind the arc.
- Junior center **Josie Sewell** tallied eight points off the bench while junior forward **Marian Wamsley** added seven. Despite shooting almost 44 percent from the field, Alaska struggled to hold onto the ball against the GNAC leader in steals, losing the turnover battle 32-14. Sewell remains tied for 12th in the league with five blocked shots this season (0.7 per game).
- Carpenter continues to lead the team and is third in the GNAC with 15.9 points per game. Her three-point shooting has made her one of the league's premier scoring threats, averaging 2.7 three-point field goals per game for a GNAC best.
- The Nanooks continue to get things done on the defensive boards with 28.6 per game to rank third in the GNAC. In their game against the Seawolves, Alaska pulled down 25 defensive rebounds to UAA's 24.
- Alaska hosts a pair of games prior to the Christmas break. The Nanooks host Multnomah this Friday and Saturday before resuming GNAC play on Dec. 29 against Western Washington.

ALASKA ANCHORAGE



- Alaska Anchorage continued its dominant 2017-18 with a comfortable 88-56 win at Alaska last Saturday.
- The Seawolves, who are fifth in Division II with 15.2 steals per game, forced 32 Nanooks' turnovers for 40 points. Alaska Anchorage also limited its in-state rival to just 21 field goals on 48 attempts.
- Senior forward **Shelby Cloninger** led Alaska Anchorage with 22 points on 10 of 14 shooting. Junior guard **Sydni Stallworth** produced a career night, shooting 8 of 16 from the floor for 17 points off the bench.
- Senior forward Hannah Wandersee and Cloninger are both within the GNAC's top-11 scorers with 15.7 and 13.4 points per game, respectively. Both are also shooting better than 52.9 percent from the floor.
- The Seawolves have the GNAC's top-three steal leaders in junior guard **Kian McNair**, senior guard **Rodericka Ware** and sophomore guard **Yazmeen Goo**. McNair and Ware are both averaging more than three steals per game and are within Division II's top-20 in that category. Goo is averaging 2.3 steals per game.
- Alaska Anchorage is second in the GNAC in scoring offense (81.4) and lead the league in scoring defense (57), scoring margin (+24.4), assists (198), steals (137) and turnover margin (+9.33).
- For the sixth week in a row, the Seawolves are No. 2 in both the Division II WBCA and D2SIDA Women's Basketball Rankings and are No. 1 in the D2SIDA West Region Poll.
- Alaska Anchorage continues its non-conference slate at Notre Dame de Namur this Saturday before facing Sonoma State three days later for its final game before GNAC play resumes.

CENTRAL WASHINGTON



- Playing for the first time in 10 days, Central Washington defeated Academy of Art Tuesday 81-69.
- The Wildcats' starting five carried most of the load Tuesday afternoon, accounting for 71 of the team's points. Junior guard **Sadie Mensing** led three other starters in double-digit scoring with 17 points, eight of which came from the charity stripe. Sophomore guard **Alexis Pana** and sophomore forward **Kaelie Flores** each recorded 16 points.
- Central Washington locked down on defense forcing 22 Urban Knight turnovers for 28 points. The Wildcats also had their way in the paint with 48 points. Senior forward **Rachel Lorentson** totaled eight points off the bench.
- Senior guard **Jasmin Edwards** and Pana are among the GNAC's top-five playmakers with five and 3.9 assists, respectively. Mensing improved her free throw percentage to .867 (26-30).
- Flores is second in the GNAC with 1.3 blocks per game. Her efforts on the defensive end of the court have helped CWU lead the GNAC and rank 39th in Division II with 4.3 blocked shots per game. Central Washington has recorded double-digit offensive rebound totals in its previous eight games, ranking them second in the GNAC with 15.1 offensive boards per game.
- Edwards ranks third in the GNAC with five assists per game and is shooting .452 from beyond the arc. Flores is third in the GNAC with 1.3 blocks per game.
- Central Washington returns to action on Thursday at Dominican (Calif.) before taking on Western Oregon in a GNAC contest on Dec. 19.

CONCORDIA



- In just one non-conference game last week, Concordia took care of Warner Pacific with a 78-47 victory.
- Paced by sophomore guard **Kizza Maltezo's** game-high 18 points off the bench, the Cavaliers led the entire afternoon and reached its largest lead of 34 points with 1:40 left in the game.
- Junior forward **Bailey Cartwright** was one of four Cavs to reach double-figure scoring with 16 points and 11 rebounds. Cartwright leads the GNAC and is 48th in Division II with 9.8 rebounds per game. Saturday's effort gave the junior her fourth double-double of the season.
- Scoring 12 points in her starting role, senior guard **Danielle Hartzog** connected on 2 of 3 shots from downtown. Sophomore center **Rebecca Taylor** totaled 10 points off the bench in 20 minutes of action, shooting 4 for 7 from the field.
- Assists have been easy to come by for junior guard **Keesha Sarman**, who is second in the GNAC and 22nd in Division II with 5.6 assists per game. She is also second in the league shooting .529 percent from beyond the arc (9-17).
- In the latest D2SIDA West Region rankings, Concordia is ranked No. 8 for the second consecutive week.
- Concordia is second in the GNAC in scoring defense allowing 58.6 points per game. The Cavs also boast the best field goal and 3-point field goal percentage defense at 33.9 and 25.8 percent.
- The Cavaliers have one contest prior to the Christmas break. They travel for the first time in five games to take on Northwest Nazarene on Tues., Dec. 19 for their third conference game of the season.

Around The GNAC

MONTANA STATE BILLINGS



- Off to the best start in program history, Montana State Billings was the busiest GNAC team last week with a pair of home wins against non-conference opponents.

- The Yellowjackets improved to 9-0 with a 62-57 win over Rocky Mountain on Friday and 87-65 win over Providence (Mont.) one day later.

- Senior forward **Alisha Breen** was named the GNAC

Women's Basketball Player of the Week for the second consecutive week after averaging 24.5 points in the two games. She went 15 of 16 from the free throw line and broke the school record for career free throws made (previously 393). Breen, who leads the GNAC with 22.3 points per game, is 19th in GNAC history with 1,411 career points.

- In MSUB's win over Rocky Mountain, the Yellowjackets shot just 33 percent (20-60) from the floor but relied on 15 second-chance points off 16 offensive rebounds to secure its eighth win of the year.

- In a dominant performance one day later, MSUB connected on 53 percent of its shots and went 12 of 28 from the three-point line. Breen tallied a game-high 26 points while senior guard **Rylee Kane** added nine assists and eight points. Kane ranks first in the GNAC and is sixth in Division II with 6.6 assists per game.

- Shooting 44.4 percent from the floor, the Yellowjackets have the second-highest field goal percentage in the GNAC. They have also shared the ball pretty well this year, ranking second in the GNAC and 23rd in Division II with 17.9 assists per game.

- For the second week in a row, Montana State Billings is No. 5 in the D2SIDA West Region Poll. The Yellowjackets also received votes in both the WBCA and D2SIDA National Rankings.

- With three games left before the Christmas break, MSUB travels to Hawaii to play in the Oahu Christmas Classic hosted by Hawaii Pacific. The Yellowjackets will take on Drury, Harding and HPU during the four-day tournament.

NORTHWEST NAZARENE



- Northwest Nazarene has not played since its 78-68 loss to Alaska Anchorage on Dec. 2.

- The Nighthawks boast the highest scoring offense in the GNAC with 81.6 points per game. A big factor to Northwest Nazarene's offensive output has been its league-leading .456 field goal percentage

- Second in the league in steals (73) and third in assists (112), Northwest Nazarene has capitalized on its opportunities beyond the arc with a .367 mark from downtown, good for first in the GNAC.

- Junior forward **Danielle Jardine** and sophomore guard **Avery Albrecht** rank first and third in field goal percentage shooting over 54 percent. Albrecht also leads the league in field goal percentage (.643).

- Northwest Nazarene is one of five GNAC teams ranked in the top-10 of the D2SIDA West Region Poll. The Nighthawks are sixth for the second consecutive week.

- The Nighthawks stay home for the holidays as they take on Concordia in a GNAC contest on Tues., Dec. 19 before hosting Western Oregon on Dec. 30.

SAINT MARTIN'S



- Saint Martin's is coming off a tough 81-66 loss to Seattle Pacific in GNAC play last Saturday.

- The game was won in the second and third quarters, where Seattle Pacific outscored SMU by a combined 13 points to give the Saints its second conference loss of the season.

- Saint Martin's top-two scorers, senior forward **Elin Johansson** and freshman guard **Saniah Simpson-Patu**, each totaled at least 20 points while sophomore guard **Makenna Schultz** added 14 off the bench. The Saints struggled from the floor in the second half shooting just 32 percent on 11 of 34 attempts.

- On top of her 21 points, Simpson-Patu pulled down 14 rebounds to complete her double-double. She is seventh in the GNAC scoring 14.9 points per game and is tied for eighth with Johansson with 7.3 rebounds per game.

- On the other hand, Johansson is the league's second-highest scorer at 18.7 points per game. The senior is fifth in the GNAC with a .537 shooting percentage.

- Prior to the holiday break, Saint Martin's will host Oklahoma Christian on Tues., Dec. 19 before facing undefeated Montana State Billings when GNAC action resumes on Dec. 30.

SEATTLE PACIFIC



- A balanced shooting night gave Seattle Pacific an 81-66 GNAC win over Saint Martin's in the Falcons' only contest of the week last Saturday.

- Shooting 41 percent from the field in both halves, Seattle Pacific saw two players finish in double-figure scoring while five recorded eight points each.

- Senior guard **Rachel Shim** led the Falcons with 16 points while senior center **Julia Haining** recorded 14 points on 6 for 6 shooting. Fourth in the GNAC with 3.3 offensive rebounds per game, Haining recorded two offensive rebounds to give her 26 for the season.

- Senior guard **Jordan McPhee** is sixth in the GNAC with 15.5 points per game and is fifth with two steals per game. In 20 minutes of action against SMU, McPhee shot 40 percent (4-10) from the floor and pulled down three offensive rebounds.

- Seattle Pacific has dominated the defensive boards this season and leads the GNAC with 30.5 per game. The Falcons have the league's second-highest rebounding margin at +9.1.

- The Falcons are ranked No. 19 in the WBCA Division II Poll and No. 24 in the D2SIDA National Poll.

- Seattle Pacific returns to action today against Concordia (Calif.) before taking on Oklahoma Christian on Mon., Dec. 18 to round out non-conference action.

- The Falcons are 5-0 in non-conference games this season and will look to capture its second straight sweep of non-conference opponents. In its last meeting against Concordia (Calif.) on Dec. 16, 2016, SPU head coach **Julie Heisey** recorded her 400th-career victory.

Around The GNAC

SIMON FRASER



- The Clan has not seen action since their 70-61 loss at Montana State Billings on Dec. 2.
- Entering the week, Simon Fraser was third in the GNAC shooting .363 from three-point range and first in three-pointers made with 8.6 per game.
- Junior center **Tayla Jackson** leads Simon Fraser and is eighth in the GNAC with 14.1 points per game. Sophomore guard **Nicole VanderHelm** and junior forward **Sophie Swant** are both 17th in the league with 12.1 points per game. Swant has also been solid from the charity stripe this season, converting 22 of her 23 attempts. She also is fifth in the GNAC with eight blocked shots.
- Guard **Taylor Drynan** has provided excellent offensive prowess in her sophomore season, ranking fourth in the GNAC with 4.5 assists per game. The guard has handled the ball well this year, averaging a league-best 2.6 assist/turnover ratio.
- The Clan remains in the D2SIDA West Region Poll, this time receiving votes (1) with Western Oregon.
- Simon Fraser heads to Bellingham, Wash., next week to play against No.3 West Texas A&M and Texas A&M International in the Viking Holiday Hoop Classic. Their next home game is on Dec. 29 against Alaska Anchorage in GNAC action.

WESTERN OREGON



- Western Oregon is coming road losses to southern Oregon opponents. On Monday, the Wolves fell 59-53 to Oregon Tech before being stifled by Southern Oregon 77-67 last night.
- Over the two games, senior guard **Sydney Azorr** averaged 9.5 points per game and went 13 for 13 from the charity stripe. Despite senior guard **Shelby Snook's** 12-point performance against the Owls on Monday, the senior was limited to 0 of 5 shooting from the field on Tuesday with five assists.
- The Wolves were limited to 19 percent from three-point range over the two nights, converting just eight long-range baskets on 42 attempts.
- Western Oregon remains in the D2SIDA Division II mix, this time receiving the most votes (3) outside the top-10.
- Through five games, three different Wolves are averaging at least 10 points per game. Snook leads the Wolves with 12.6 points per game and is followed by freshman guard **Keyonna Jones** with 11.3 points per game. Snook is also fourth in the GNAC at the free throw line shooting almost 86 percent. Junior guard **Kaylie Boschma** leads the GNAC with 6.7 defensive rebounds per game.
- Western Oregon boasts the best free throw percentage in the GNAC (.781) and has pulled down the second-most defensive rebounds (30.3 per game).
- The Wolves return to GNAC action before the holiday break with a road game at Central Washington on Tues., Dec. 19. Western Oregon ends its four-game road trip on Dec. 30 at Northwest Nazarene.

WESTERN WASHINGTON



- Western Washington was one of five GNAC teams to have last week off.
- In their previous game on Nov. 30, the Vikings were silenced with a 75-62 loss to Montana State Billings at Alterowitz Gym.
- Senior forward **Hannah Stipanovich** has been the go-to scorer for the Vikings this year with 15.6 points per game, good for fifth in the GNAC. Both Stipanovich and sophomore forward **Anna Schwecke** have been solid on the glass this season as both players rank in the GNAC's top-seven in rebounds. Schwecke has also provided solid paint presence with 1.1 blocked shots per game.
- Sophomore guard **Lexi Bland** is third in the league with a .889 free throw percentage (16-18) while sophomore guard **Dani Iwami** has converted the second-most 3-point field goals this season with 21.
- Western Washington's win over Simon Fraser two weeks ago was No. 997 all-time in program history, picking up their third straight GNAC opener.
- As a team, Western Washington is No. 3 in the GNAC shooting .762 from the charity stripe. Shooting .364 from long range this season, WWU has converted 56 three-pointers on 154 attempts. The Viks also lead the league with a +10.4 rebounding margin.
- The Vikings return to action on Mon., Dec. 18 when they host the Viking Holiday Hoops Classic. Western Washington will host No. 3 West Texas A&M and Texas A&M International in the two-day tournament.

National & Regional Polls

WBCA DIVISION II RANKINGS

Week 4 - Dec. 12, 2017

Rk	School	Record	Points	Last
1	Ashland (24)	10-0	600	1
2	Alaska Anchorage	9-0	575	2
3	West Texas A&M	9-0	543	4
4	Lubbock Christian	10-1	476	4
5	Indiana (PA)	9-0	470	5
6	Carson-Newman	11-0	459	8
7	Drury	9-1	427	7
8	Bentley	9-1	422	3
9	Virginia Union	7-1	386	9
10	Central Missouri	6-1	353	10
11	California (PA)	8-1	348	11
12	Northern State	8-1	307	14
13	Edinboro	8-0	280	16
14	Wingate	7-1	267	15
15	Michigan Tech	10-1	256	18
16	Fort Lewis	8-1	206	20
17	Southern Indiana	8-0	184	22
18	Augustana (SD)	9-0	168	23
19	Seattle Pacific	7-1	160	21
T20	Azusa Pacific	11-2	136	13
T20	Southwestern OKST	8-1	136	19
22	Cedarville	7-1	126	24
23	Central Oklahoma	9-1	120	25
24	Univ. of Sciences	7-1	106	17
25	Rollins	7-2	77	12

Dropped out: None.

Others receiving votes: Glenville State (8-1) 45; North Alabama (8-0) 35; **Montana State Billings (9-0) 25**; Union (TN) (8-1) 24; Stonehill (7-1) 12; Eckerd (9-1) 11; Colorado Mesa (9-1) 10; St. Thomas Aquinas (9-0) 7; Embry Riddle (8-1) 6; Pittsburg State (8-2) 6; Grand Valley State (8-2) 2.

[Complete Poll Online](#)

D2SIDA DIVISION II MEDIA POLL

Week 4 - Dec. 12, 2017

Rk	School (1st)	Record	Pts.	Prev.
1	Ashland (14)	10-0	374	1
2	Alaska Anchorage (1)	9-0	360	2
3	IUP	9-0	339	3
4	Lubbock Christian	10-1	326	5
5	Carson-Newman	11-0	315	6
6	West Texas A&M	9-0	288	7
7	Southern Indiana	8-0	267	9
8	St. Thomas Aquinas	9-0	256	19
9	Augustana	9-0	243	20
10	Edinboro	8-0	236	13
11	Union	8-1	221	17
12	Bentley	9-1	216	4
13	Michigan Tech	10-1	207	T14
14	T14 Southwestern Oklahoma	8-1	171	T14
15	T14 Wingate	7-1	171	16
16	Eckerd	9-1	132	RV
17	Virginia Union	7-1	121	21
18	Drury	9-1	112	22
19	North Alabama	8-0	91	23
20	UC San Diego	7-2	89	24
21	Fort Lewis	8-1	72	NR
22	Jefferson	9-1	66	NR
23	Central Missouri	6-1	53	NR
24	Seattle Pacific	7-1	44	RV
25	California	8-1	31	RV

Dropped Out: Fort Hays State, USciences, Azusa Pacific, Colorado Mesa, Black Hills State.

Also Receiving Votes: Lander (30), Azusa Pacific (18), USciences (14), **Montana State Billings (6)**, Northern State (5), Glenville State (4), Midwestern State (4), Embry-Riddle (3).

[Complete Poll Online](#)

D2SIDA POLL WEST REGION RANKINGS

Week 4 - Dec. 11, 2017

Rk	School (1st)	Record	Prev.	Pts.
1	Alaska Anchorage (6)	9-0	1	60
2	UC San Diego	7-2	3	54
3	Seattle Pacific	7-1	4	46
4	Azusa Pacific	11-2	2	43
5	Montana State Billings	9-0	5	37
6	Northwest Nazarene	5-2	T6	28
7	Point Loma	6-3	T6	19
8	Concordia	6-3	8	16
9	Dominican	7-2	9	12
10	Hawaii Pacific	5-2	T10	8

Also Receiving Votes: *Western Oregon (3), Dixie State (1), Simon Fraser (1)*

[Complete Poll Online](#)

GNAC TEAMS IN THE D2SIDA WEST REGION

RANKING

Date	UAA	CU	MSUB	NNU	SFU	SPU	WOU	WWU
Pre	1st	—	RV	—	6th	—	—	3rd
Nov. 20	1st	—	7th	RV	6th	2nd	RV	9th
Nov. 26	1st	RV	6th	9th	5th	2nd	10th	RV
Dec. 5	1st	8th	5th	T6th	T10th	4th	RV(6)	RV(5)
Dec. 11	1st	8th	5th	6th	RV(1)	3rd	RV(3)	--

GNAC TEAMS IN THE D2SIDA NATIONAL

RANKINGS

Date	UAA	MSUB	SPU	WWU
Preseason	3rd	-	-	20th
Nov. 21	2nd	--	13th	--
Nov. 28	2nd	--	11th	--
Dec. 5	2nd	--	RV(13)	--
Dec. 12	2nd	RV(6)	24th	--

GNAC TEAMS IN THE WBCA POLL

Week	UAA	MSUB	SPU
Preseason	4th	--	RV
Nov. 21	2nd	--	16th
Nov. 28	2nd	--	13th
Dec. 5	2nd	RV(14)	21st
Dec. 12	2nd	RV(25)	19th

GNAC In Division II Statistics

TEAM - Top 50 Through Games As Of Dec. 11

Category	Institution	Avg./Total	Rank
Points Per Game	Northwest Nazarene	81.6	17th
	Alaska Anchorage	81.4	18th
	Montana State Billings	75.4	49th
Scoring Defense	Alaska Anchorage	57.0	33rd
	Concordia	58.6	50th
Scoring Margin	Alaska Anchorage	24.4	10th
	Seattle Pacific	14.9	37th
	Montana State Billings	13.8	47th
Field-Goal Percentage	Northwest Nazarene	45.6	17th
	Montana State Billings	44.4	36th
	Alaska Anchorage	43.6	43rd
Field-Goal Defense	Concordia	33.9	17th
	Alaska Anchorage	34.6	31st
Free-Throw Percentage	Western Oregon	78.1	25th
	Montana State Billings	77.1	34th
	Western Washington	76.2	38th
	Seattle Pacific	76.1	41st
	Simon Fraser	75.9	44th
	Alaska Anchorage	75.6	45th
Rebounding Margin	Western Washington	10.4	10th
	Seattle Pacific	9.1	21st
3-Pointers Per Game	Simon Fraser	8.6	20th
	Montana State Billings	8.6	21st
3-Point Percentage	Northwest Nazarene	36.7	29th
	Western Washington	36.4	36th
	Simon Fraser	36.3	37th
	Montana State Billings	35.3	45th
	Alaska Anchorage	100	1st
Won-Lost Percentage	Montana State Billings	100	1st
	Seattle Pacific	87.5	33rd
	Alaska Anchorage	22.0	2nd
Assists Per Game	Montana State Billings	17.9	23rd
	Northwest Nazarene	16.0	50th
Blocks Per Game	Central Washington	4.3	39th
Steals Per Game	Alaska Anchorage	15.2	5th
	Northwest Nazarene	10.4	50th
Assist-Turnover Ratio	Montana State Billings	1.53	2nd
	Alaska Anchorage	1.36	10th
Turnover Margin	Alaska Anchorage	9.33	6th
	Simon Fraser	4.75	42nd
	Montana State Billings	3.89	49th
3-Point Defense	Concordia	25.8	39th
Off. Rebounds/Game	Alaska Anchorage	17.0	16th
Def. Rebounds/Game	Seattle Pacific	31.0	25th
	Western Oregon	30.0	29th

INDIVIDUALS - Top 50 Through Games As Of Dec. 11

Category	Team	Player	Avg./Total	Rank
Points Per Game	MSUB	Alisha Breen	22.3	11th
Rebounds Per Game	CU	Bailey Cartwright	9.80	48th
	MSUB	Rylee Kane	6.60	6th
Assists Per Game	CU	Keesha Sarman	5.60	22nd
	CWU	Jasmin Edwards	5.00	38th
	UAA	Hannah Wandersee	1.56	86th
Blocks Per Game	UAA	Hannah Wandersee	1.56	86th
Steals Per Game	UAA	Kian McNair	3.22	12th
	UAA	Rodericka Ware	3.00	20th
Field-Goal Percentage	UAA	Hannah Wandersee	57.0	35th
Free-Throw Percentage	SFU	Sophie Swant	95.7	8th
	MSUB	Alisha Breen	93.2	12th
3-Point Percentage	WWU	Lexie Bland	88.9	46th
	MSUB	Alisha Breen	50.0	8th
3-Pointers Per Game	NNU	Mckenna Walker	46.9	25th
Assist-Turnover Ratio	UAF	Lexi Carpenter	2.71	46th
	SFU	Taylor Drynan	2.57	23rd
Double Doubles	MSUB	Rylee Kane	2.57	24th
	CWU	Alexis Pana	2.21	43rd
Off. Rebounds/Game	UAA	Rodericka Ware	2.14	50th
	CU	Bailey Cartwright	4.00	33rd
Defensive Rebounds	CU	Bailey Cartwright	4.00	27th
	WWU	Hannah Stipanovich	4.00	37th
Free Throw Attempts	WOU	Kaylie Boschma	7.00	55th
	SMU	Saniah Simpson-Patu	61.0	35th
	SMU	Elin Johansson	60.0	40th
	MSUB	Alisha Breen	59.0	43rd

Online: http://stats.ncaa.org/rankings/change_sport_year_div

GNAC Team Statistics

SCORING OFFENSE

## Team	G	W-L	Pts	Avg/G
1. Northwest Nazarene	7	5-2	571	81.6
2. Alaska Anchorage	9	9-0	733	81.4
3. MSU Billings	9	9-0	679	75.4
4. Seattle Pacific	8	7-1	595	74.4
5. Central Washington	9	5-4	637	70.8
6. Simon Fraser	8	4-4	557	69.6
7. Saint Martin's	10	5-5	687	68.7
8. Concordia (Ore.)	9	6-3	617	68.6
9. Western Oregon	8	5-3	540	67.5
10. Western Washington	8	4-4	531	66.4
11. Alaska	7	2-5	404	57.7

FIELD GOAL PERCENTAGES

## Team	G	FG	FGA	Pct
1. Northwest Nazarene	7	209	458	.456
2. MSU Billings	9	242	545	.444
3. Alaska Anchorage	9	270	619	.436
4. Saint Martin's	10	237	561	.422
5. Seattle Pacific	8	207	504	.411
6. Central Washington	9	225	559	.403
7. Concordia (Ore.)	9	219	547	.400
8. Simon Fraser	8	189	479	.395
9. Western Washington	8	183	476	.384
10. Western Oregon	8	185	488	.379
11. Alaska	7	151	419	.360

SCORING DEFENSE

## Team	G	Pts	Avg/G
1. Alaska Anchorage	9	513	57.0
2. Concordia (Ore.)	9	527	58.6
3. Seattle Pacific	8	476	59.5
4. MSU Billings	9	555	61.7
5. Western Washington	8	522	65.2
6. Alaska	7	458	65.4
7. Western Oregon	8	533	66.6
8. Simon Fraser	8	536	67.0
9. Central Washington	9	605	67.2
10. Saint Martin's	10	679	67.9
11. Northwest Nazarene	7	488	69.7

FIELD GOAL PCT DEFENSE

## Team	G	FG	FGA	Pct
1. Concordia (Ore.)	9	176	519	.339
2. Alaska Anchorage	9	168	485	.346
3. Seattle Pacific	8	170	476	.357
4. Saint Martin's	10	245	657	.373
5. Western Washington	8	181	480	.377
6. Western Oregon	8	188	492	.382
7. Alaska	7	166	433	.383
8. Central Washington	9	214	554	.386
9. Northwest Nazarene	7	171	439	.390
10. MSU Billings	9	201	498	.404
11. Simon Fraser	8	199	472	.422

SCORING MARGIN

## Team	G	OFF	DEF	Margin
1. Alaska Anchorage	9	81.4	57.0	+24.4
2. Seattle Pacific	8	74.4	59.5	+14.9
3. MSU Billings	9	75.4	61.7	+13.8
4. Northwest Nazarene	7	81.6	69.7	+11.9
5. Concordia (Ore.)	9	68.6	58.6	+10.0
6. Central Washington	9	70.8	67.2	+3.6
7. Simon Fraser	8	69.6	67.0	+2.6
8. Western Washington	8	66.4	65.2	+1.1
9. Western Oregon	8	67.5	66.6	+0.9
10. Saint Martin's	10	68.7	67.9	+0.8
11. Alaska	7	57.7	65.4	-7.7

3-POINT FG PCT

## Team	G	FG	FGA	Pct
1. Northwest Nazarene	7	55	150	.367
2. Western Washington	8	56	154	.364
3. Simon Fraser	8	69	190	.363
4. MSU Billings	9	77	218	.353
5. Concordia (Ore.)	9	53	156	.340
6. Alaska Anchorage	9	69	209	.330
7. Central Washington	9	55	168	.327
8. Saint Martin's	10	45	140	.321
9. Seattle Pacific	8	57	181	.315
10. Alaska	7	42	144	.292
11. Western Oregon	8	40	144	.278

FREE THROW PCT

## Team	G	FTM	FTA	Pct
1. Western Oregon	8	130	167	.778
2. MSU Billings	9	118	153	.771
3. Western Washington	8	109	143	.762
4. Seattle Pacific	8	124	163	.761
5. Simon Fraser	8	110	145	.759
6. Alaska Anchorage	9	124	164	.756
7. Saint Martin's	10	168	237	.709
8. Concordia (Ore.)	9	126	179	.704
9. Central Washington	9	132	197	.670
10. Northwest Nazarene	7	98	149	.658
11. Alaska	7	60	97	.619

3-POINT FG PCT DEFENSE

## Team	G	FG	FGA	Pct
1. Concordia (Ore.)	9	47	182	.258
2. Western Oregon	8	38	137	.277
3. Alaska	7	41	145	.283
4. Northwest Nazarene	7	44	155	.284
5. Simon Fraser	8	43	147	.293
6. Saint Martin's	10	69	231	.299
7. Western Washington	8	46	152	.303
8. Central Washington	9	54	176	.307
9. MSU Billings	9	45	146	.308
10. Seattle Pacific	8	48	153	.314
11. Alaska Anchorage	9	53	157	.338

GNAC Team Statistics

REBOUNDED OFFENSE

## Team	G	Reb	Avg/G
1. Seattle Pacific	8	356	44.5
2. Western Washington	8	344	43.0
3. Alaska	7	300	42.9
4. Western Oregon	8	333	41.6
5. Central Washington	9	365	40.6
6. Alaska Anchorage	9	362	40.2
7. Concordia (Ore.)	9	361	40.1
8. Northwest Nazarene	7	273	39.0
9. Saint Martin's	10	375	37.5
10. MSU Billings	9	298	33.1
11. Simon Fraser	8	252	31.5

STEALS

## Team	G	Steals	Avg/G
1. Alaska Anchorage	9	137	15.22
2. Northwest Nazarene	7	73	10.43
3. Seattle Pacific	8	82	10.25
4. Concordia (Ore.)	9	82	9.11
5. Alaska	7	59	8.43
6. Simon Fraser	8	67	8.38
7. Western Oregon	8	61	7.63
8. MSU Billings	9	61	6.78
9. Central Washington	9	60	6.67
10. Western Washington	8	52	6.50
11. Saint Martin's	10	59	5.90

REBOUNDED DEFENSE

## Team	G	Reb	Avg/G
1. MSU Billings	9	261	29.0
2. Western Washington	8	261	32.6
3. Alaska Anchorage	9	316	35.1
4. Concordia (Ore.)	9	318	35.3
5. Seattle Pacific	8	283	35.4
6. Northwest Nazarene	7	261	37.3
7. Central Washington	9	352	39.1
8. Alaska	7	275	39.3
9. Simon Fraser	8	318	39.8
10. Saint Martin's	10	401	40.1
11. Western Oregon	8	321	40.1

TURNOVER MARGIN

## Team	G	TEAM	Avg	OPP	Avg	Margin
1. Alaska Anchorage	9	146	16.2	230	25.6	+9.33
2. Simon Fraser	8	123	15.4	161	20.1	+4.75
3. MSU Billings	9	105	11.7	140	15.6	+3.89
4. Northwest Nazarene	7	127	18.1	152	21.7	+3.57
5. Seattle Pacific	8	121	15.1	135	16.9	+1.75
6. Concordia (Ore.)	9	162	18.0	173	19.2	+1.22
7. Central Washington	9	144	16.0	149	16.6	+0.56
8. Western Oregon	8	123	15.4	124	15.5	+0.12
9. Saint Martin's	10	165	16.5	154	15.4	-1.10
10. Alaska	7	150	21.4	129	18.4	-3.00
11. Western Washington	8	163	20.4	111	13.9	-6.50

BLOCKED SHOTS

## Team	G	Blocks	Avg/G
1. Central Washington	9	38	4.22
2. Alaska Anchorage	9	32	3.56
Concordia (Ore.)	9	32	3.56
4. Alaska	7	22	3.14
5. Western Oregon	8	25	3.13
Western Washington	8	25	3.13
7. Saint Martin's	10	26	2.60
8. MSU Billings	9	23	2.56
9. Simon Fraser	8	20	2.50
10. Northwest Nazarene	7	17	2.43
11. Seattle Pacific	8	14	1.75

ASSIST/TURNOVER RATIO

## Team	G	Asst	Avg	Turn	Avg	Ratio
1. MSU Billings	9	161	17.9	105	11.7	1.53
2. Alaska Anchorage	9	198	22.0	146	16.2	1.36
3. Seattle Pacific	8	121	15.1	121	15.1	1.00
4. Simon Fraser	8	118	14.8	123	15.4	0.96
5. Central Washington	9	133	14.8	144	16.0	0.92
6. Northwest Nazarene	7	112	16.0	127	18.1	0.88
7. Concordia (Ore.)	9	131	14.6	162	18.0	0.81
8. Saint Martin's	10	125	12.5	165	16.5	0.76
9. Western Oregon	8	82	10.3	123	15.4	0.67
10. Western Washington	8	103	12.9	163	20.4	0.63
11. Alaska	7	94	13.4	150	21.4	0.63

ASSISTS

## Team	G	Assists	Avg/G
1. Alaska Anchorage	9	198	22.00
2. MSU Billings	9	161	17.89
3. Northwest Nazarene	7	112	16.00
4. Seattle Pacific	8	121	15.13
5. Central Washington	9	133	14.78
6. Simon Fraser	8	118	14.75
7. Concordia (Ore.)	9	131	14.56
8. Alaska	7	94	13.43
9. Western Washington	8	103	12.88
10. Saint Martin's	10	125	12.50
11. Western Oregon	8	82	10.25

GNAC Individual Statistics

SCORING

##	Player-Team	Cl	G	FG	3FG	FT	Pts	Avg/G
1.	Breen,Alisha-MSUB	SR	9	62	22	55	201	22.3
2.	Johansson,Elin-SMU	SR	10	72	0	43	187	18.7
3.	Carpenter,Lexi-UAF	SO	7	38	19	16	111	15.9
4.	Wandersee,Hannah-UAA	JR	9	61	1	18	141	15.7
5.	Stipanovich,Hannah-WWU	SR	8	48	0	29	125	15.6
6.	McPhee,Jordan-SPU	SR	8	44	6	30	124	15.5
7.	Simpson-Patu,Saniah-SMU	FR	10	52	3	42	149	14.9
8.	Jackson,Tayla-SFU	JR	8	42	3	26	113	14.1
9.	Walker,McKenna-NNU	JR	7	34	15	13	96	13.7
10.	Hartzog,Danielle-CU	SR	8	38	14	18	108	13.5
11.	Cloninger,Shelby-UAA	SR	9	45	15	16	121	13.4
12.	Mensing,Sadie-CWU	JR	9	40	2	34	116	12.9
13.	Cartwright,Bailey-CU	JR	9	40	0	35	115	12.8
14.	Tubbs,Lexi-NNU	SR	7	29	14	15	87	12.4
15.	Edwards,Jasmin-CWU	SR	9	33	16	29	111	12.3

ASSISTS

##	Player-Team	Cl	G	Assists	Avg/G
1.	Kane,Rylee-MSUB	SR	9	59	6.56
2.	Sarman,Keesha-CU	JR	9	50	5.56
3.	Edwards,Jasmin-CWU	SR	9	45	5.00
4.	Drynan,Taylor-SFU	SO	8	36	4.50
5.	Pana,Alexis-CWU	SO	9	37	4.11
6.	Goo,Yazmeen-UAA	SO	9	34	3.78
7.	Ware,Rodericka-UAA	SR	8	30	3.75
8.	Breen,Alisha-MSUB	SR	9	29	3.22
9.	Valles,Marina-NNU	SO	7	21	3.00
10.	Snook,Shelby-WOU	SR	8	23	2.88
	Iwami,Dani-NNU	SO	8	23	2.88
12.	Shim,Rachel-SPU	SR	8	22	2.75
13.	Reynolds,Hannah-SMU	SR	10	27	2.70
14.	Stallworth,Sydni-UAA	JR	9	24	2.67
	McNair,Kian-UAA	JR	9	24	2.67

REBOUNDING

##	Player-Team	Cl	G	OFF	DEF	TOT	Avg/G
1.	Cartwright,Bailey-CU	JR	9	35	53	88	9.8
2.	Haining,Julia-SPU	SR	8	26	47	73	9.1
3.	Hollander,Courtney-SPU	SR	8	15	52	67	8.4
4.	Breen,Alisha-MSUB	SR	9	13	60	73	8.1
5.	Schwecke,Anna-WWU	SO	8	23	41	64	8.0
6.	Blackburn,Ashlie-UAF	JR	7	9	43	52	7.4
7.	Stipanovich,Hannah-WWU	SR	8	30	29	59	7.4
8.	Johansson,Elin-SMU	SR	10	24	49	73	7.3
	Simpson-Patu,Saniah-SMU	FR	10	20	53	73	7.3
10.	Tubbs,Lexi-NNU	SR	7	7	41	48	6.9
11.	Wandersee,Hannah-UAA	JR	9	30	29	59	6.6
12.	Boschma,Kaylie-WOU	JR	8	5	47	52	6.5
13.	Flores,Kaelie-CWU	SO	9	17	38	55	6.1
14.	Cloninger,Shelby-UAA	SR	9	20	34	54	6.0
15.	Baird,Taylor-CWU	SR	9	23	29	52	5.8
	Sarman,Keesha-CU	JR	9	19	33	52	5.8

FREE THROW PCT (Min. 1.8 made per game)

##	Player-Team	Cl	G	FTM	FTA	Pct
1.	Swant,Sophie-SFU	JR	8	22	23	.957
2.	Breen,Alisha-MSUB	SR	9	55	59	.932
3.	Mensing,Sadie-CWU	JR	9	34	38	.895
4.	Bland,Lexie-WWU	SO	6	16	18	.889
5.	Snook,Shelby-WOU	SR	8	21	24	.875
	Jones,Keyonna-WOU	FR	6	14	16	.875
7.	Azorr,Sydney-WOU	SR	8	27	31	.871
8.	Wandersee,Hannah-UAA	JR	9	18	21	.857
9.	Hartzog,Danielle-CU	SR	8	18	22	.818
10.	Castaneda,Gracie-WWU	FR	8	28	35	.800
11.	Hollander,Courtney-SPU	SR	8	22	28	.786
12.	McPhee,Jordan-SPU	SR	8	30	39	.769
13.	Pape,Maddy-WOU	JR	6	13	17	.765
	Walker,McKenna-NNU	JR	7	13	17	.765
15.	Carpenter,Lexi-UAF	SO	7	16	21	.762

FIELD GOAL PCT (Min. 2.8 made per game)

##	Player-Team	Cl	G	FG	FGA	Pct
1.	Jardine,Danielle-NNU	JR	7	24	41	.585
2.	Wandersee,Hannah-UAA	JR	9	61	107	.570
3.	Albrecht,Avery-NNU	SO	7	20	37	.541
4.	Haining,Julia-SPU	SR	8	27	50	.540
5.	Johansson,Elin-SMU	SR	10	72	134	.537
6.	Cloninger,Shelby-UAA	SR	9	45	85	.529
7.	Walker,McKenna-NNU	JR	7	34	67	.507
8.	Breen,Alisha-MSUB	SR	9	62	124	.500
	McPhee,Jordan-SPU	SR	8	44	88	.500
	Valles,Marina-NNU	SO	7	27	54	.500
11.	Stipanovich,Hannah-WWU	SR	8	48	97	.495
12.	Stavish,Vanessa-MSUB	JR	9	37	75	.493
13.	Heugly,Savannah-WOU	SR	7	26	53	.491
14.	Wamsley,Marian-UAF	JR	7	23	48	.479
15.	Baird,Taylor-CWU	SR	9	38	82	.463

STEALS

##	Player-Team	Cl	G	Steals	Avg/G
1.	McNair,Kian-UAA	JR	9	29	3.22
2.	Ware,Rodericka-UAA	SR	8	24	3.00
3.	Goo,Yazmeen-UAA	SO	9	21	2.33
4.	Kane,Rylee-MSUB	SR	9	19	2.11
5.	McPhee,Jordan-SPU	SR	8	16	2.00
6.	Albrecht,Avery-NNU	SO	7	13	1.86
7.	Edwards,Jasmin-CWU	SR	9	16	1.78
8.	Stipanovich,Hannah-WWU	SR	8	14	1.75
	Jones,Jessica-SFU	FR	8	14	1.75
10.	Sarman,Keesha-CU	JR	9	15	1.67
11.	Swant,Sophie-SFU	JR	8	13	1.63
	Shim,Rachel-SPU	SR	8	13	1.63
13.	Heugly,Savannah-WOU	SR	7	11	1.57
	Walker,McKenna-NNU	JR	7	11	1.57
15.	Cartwright,Bailey-CU	JR	9	14	1.56

GNAC Individual Statistics

3-POINT FG MADE

##	Player-Team	Cl	G	3FG	Avg/G
1.	Carpenter, Lexi-UAF	SO	7	19	2.71
2.	Iwami, Dani-WWU	SO	8	21	2.63
3.	Breen, Alisha-MSUB	SR	9	22	2.44
4.	Lee, Lindsay-SPU	SR	8	18	2.25
5.	Maltezo, Kizzah-CU	SO	9	20	2.22
6.	Walker, McKenna-NNU	JR	7	15	2.14
7.	Ware, Rodericka-UAA	SR	8	16	2.00
	Drynan, Tayler-SFU	SO	8	16	2.00
	Tubbs, Lexi-NNU	SR	7	14	2.00
10.	Jones, Jessica-SFU	FR	8	15	1.88
11.	Edwards, Jasmin-CWU	SR	9	16	1.78
12.	Hartzog, Danielle-CU	SR	8	14	1.75
13.	Evans, Emily-UAF	JR	7	12	1.71
14.	Cloninger, Shelby-UAA	SR	9	15	1.67
	Stavish, Vanessa-MSUB	JR	9	15	1.67

DEFENSIVE REBOUNDS

##	Player-Team	Cl	G	No.	Avg/G
1.	Breen, Alisha-MSUB	SR	9	60	6.67
2.	Hollander, Courtney-SPU	SR	8	52	6.50
3.	Blackburn, Ashlie-UAF	JR	7	43	6.14
4.	Cartwright, Bailey-CU	JR	9	53	5.89
5.	Boschma, Kaylie-WOU	JR	8	47	5.88
	Haining, Julia-SPU	SR	8	47	5.88
7.	Tubbs, Lexi-NNU	SR	7	41	5.86
8.	Simpson-Patu, Saniah-SMU	FR	10	53	5.30
9.	Schwecke, Anna-WWU	SO	8	41	5.13
10.	Johansson, Elin-SMU	SR	10	49	4.90
11.	Swant, Sophie-SFU	JR	8	37	4.63
12.	Flores, Kaelie-CWU	SO	9	38	4.22
13.	Baugh, Rebekah-SMU	JR	10	42	4.20
14.	Gall, Colette-NNU	SR	7	29	4.14
15.	Snook, Shelby-WOU	SR	8	33	4.13

BLOCKED SHOTS

##	Player-Team	Cl	G	BBlocks	Avg/G
1.	Wandersee, Hannah-UAA	JR	9	14	1.56
2.	Flores, Kaelie-CWU	SO	9	12	1.33
3.	Cartwright, Bailey-CU	JR	9	11	1.22
4.	Schwecke, Anna-WWU	SO	8	9	1.13
5.	Swant, Sophie-SFU	JR	8	8	1.00
6.	Johansson, Elin-SMU	SR	10	9	0.90
7.	Baird, Taylor-CWU	SR	9	7	0.78
	Weeks, Grace-MSUB	SR	9	7	0.78
	Kuykendall, Rainey-UAA	JR	9	7	0.78
10.	McPhee, Jordan-SPU	SR	8	6	0.75
11.	Gall, Colette-NNU	SR	7	5	0.71
	Blackburn, Ashlie-UAF	JR	7	5	0.71
	Sewell, Josie-UAF	JR	7	5	0.71
14.	Pana, Alexis-CWU	SO	9	6	0.67
	Pape, Maddy-WOU	JR	6	4	0.67

ASSIST/TURNOVER RATIO (Min. 3.0 assists/game)

##	Player-Team	Cl	G	Asst	Avg	Turn	Avg	Ratio
1.	Drynan, Tayler-SFU	SO	8	36	4.5	14	1.8	2.57
2.	Kane, Rylee-MSUB	SR	9	59	6.6	23	2.6	2.57
3.	Pana, Alexis-CWU	SO	9	37	4.1	16	1.8	2.31
4.	Ware, Rodericka-UAA	SR	8	30	3.8	14	1.8	2.14
5.	Goo, Yazmeen-UAA	SO	9	34	3.8	16	1.8	2.13
6.	Sarman, Keesha-CU	JR	9	50	5.6	25	2.8	2.00
7.	Edwards, Jasmin-CWU	SR	9	45	5.0	24	2.7	1.88
8.	Breen, Alisha-MSUB	SR	9	29	3.2	17	1.9	1.71
9.	Valles, Marina-NNU	SO	7	21	3.0	17	2.4	1.24

MINUTES PLAYED

##	Player-Team	Cl	G	Minutes	Avg/G
1.	Drynan, Tayler-SFU	SO	8	277	34.62
2.	Edwards, Jasmin-CWU	SR	9	307	34.11
3.	Johansson, Elin-SMU	SR	10	334	33.40
4.	Kane, Rylee-MSUB	SR	9	296	32.89
5.	Breen, Alisha-MSUB	SR	9	292	32.44
6.	Snook, Shelby-WOU	SR	8	259	32.38
7.	Castaneda, Gracie-WWU	FR	8	252	31.50
8.	Jackson, Tayla-SFU	JR	8	250	31.25
9.	Baugh, Rebekah-SMU	JR	10	311	31.10
10.	Stipanovich, Hannah-WWU	SR	8	245	30.63

OFFENSIVE REBOUNDS

##	Player-Team	Cl	G	No.	Avg/G
1.	Cartwright, Bailey-CU	JR	9	35	3.89
2.	Stipanovich, Hannah-WWU	SR	8	30	3.75
3.	Wandersee, Hannah-UAA	JR	9	30	3.33
4.	Haining, Julia-SPU	SR	8	26	3.25
5.	McPhee, Jordan-SPU	SR	8	23	2.88
	Schwecke, Anna-WWU	SO	8	23	2.88
7.	Jardine, Danielle-NNU	JR	7	19	2.71
8.	Mensing, Sadie-CWU	JR	9	24	2.67
9.	Baird, Taylor-CWU	SR	9	23	2.56
10.	Jardine, Raquel-NNU	JR	7	17	2.43
11.	Johansson, Elin-SMU	SR	10	24	2.40
12.	Westendorf, Bobbi-WWU	JR	8	19	2.38
13.	Langi, Sala-UAA	FR	9	21	2.33
14.	Cloninger, Shelby-UAA	SR	9	20	2.22
15.	Heugly, Savannah-WOU	SR	7	15	2.14
	Salonen, Sanni-UAF	JR	7	15	2.14

GNAC 2017-18 Individual Single Game Highs

INDIVIDUAL PLAYER GAME HIGHS

Points

32	Carpenter, Lexi (Alaska) vs Central Washington (12/02/17)
31	Breen, Alisha (MSU Billings) vs Western Washington (11/30/17)
30	McPhee, Jordan (Seattle Pacific) at Azusa Pacific (11/17/17)
29	Breen, Alisha (MSU Billings) vs Simon Fraser (12/02/17)
27	Johansson, Elin (Saint Martin's) vs Academy of Art (11/24/17)
27	Wandersee, Hannah (Alaska Anchorage) vs Northwest Nazarene (12/02/17)

Field goals made

13	Johansson, Elin (Saint Martin's) vs Academy of Art (11/24/17)
12	Carpenter, Lexi (Alaska) vs Central Washington (12/02/17)
12	Wandersee, Hannah (Alaska Anchorage) vs Northwest Nazarene (12/02/17)
11	Jackson, Tayla (Simon Fraser) at Cal Baptist (11/13/17)
11	McPhee, Jordan (Seattle Pacific) at Azusa Pacific (11/17/17)
11	Breen, Alisha (MSU Billings) vs Western Washington (11/30/17)

Field goal attempts

21	Jackson, Tayla (Simon Fraser) at Cal Baptist (11/13/17)
20	Breen, Alisha (MSU Billings) at Academy of Art (11/10/17)
19	Hartzog, Danielle (Concordia (Ore.)) vs Chadron State (11/16/17)
19	Jackson, Tayla (Simon Fraser) vs Cal Baptist (11/18/17)
19	Johansson, Elin (Saint Martin's) vs Valdosta State (11/25/17)
19	Wandersee, Hannah (Alaska Anchorage) vs Central Washington (11/30/17)
19	Simpson-Patu, Saniah (Saint Martin's) at Seattle Pacific

Field goal percentage

1.000 (6-6)	Haining, Julia (Seattle Pacific) vs Saint Martin's (12/09/17)
1.000 (5-5)	Sewell, Josie (Alaska) vs Northwest Nazarene (11/30/17)
.889 (8-9)	Jardine, Danielle (Northwest Nazarene) vs Cal State Monterey B (11/11/17)
.857 (6-7)	Edwards, Jasmin (Central Washington) vs Eastern Oregon (11/21/17)
.857 (6-7)	Walker, McKenna (Northwest Nazarene) at Alaska (11/30/17)

3-Pt FG made

6	Tsang, Tia (Simon Fraser) vs Academy of Art (11/22/17)
5	Breen, Alisha (MSU Billings) at Academy of Art (11/10/17)
5	Jones, Jessica (Simon Fraser) vs Hawaii Pacific (11/16/17)
5	Cloninger, Shelby (Alaska Anchorage) vs Maryland Eastern Sho (11/21/17)
5	Iwami, Dani (Western Washington) vs Academy of Art (11/25/17)
5	Carpenter, Lexi (Alaska) vs Central Washington (12/02/17)
5	Lee, Lindsay (Seattle Pacific) at Western Oregon (12/02/17)

3-Pt FG attempts

11	Jones, Jessica (Simon Fraser) vs UC San Diego (11/10/17)
11	Ware, Rodericka (Alaska Anchorage) vs Cal State LA (11/11/17)
11	Iwami, Dani (Western Washington) vs UC San Diego (11/17/17)
11	Iwami, Dani (Western Washington) vs Academy of Art (11/25/17)
11	Maltezo, Kizzah (Concordia (Ore.)) vs Saint Martin's (12/02/17)
11	Lee, Lindsay (Seattle Pacific) vs Saint Martin's (12/09/17)

3-Pt percentage

.833 (5-6)	Cloninger, Shelby (Alaska Anchorage) vs Maryland Eastern Sho (11/21/17)
.750 (6-8)	Tsang, Tia (Simon Fraser) vs Academy of Art (11/22/17)
.625 (5-8)	Jones, Jessica (Simon Fraser) vs Hawaii Pacific (11/16/17)
.556 (5-9)	Breen, Alisha (MSU Billings) at Academy of Art (11/10/17)
.556 (5-9)	Lee, Lindsay (Seattle Pacific) at Western Oregon (12/02/17)

Free throws made

10	Breen, Alisha (MSU Billings) vs Concordia (Ore.) (11/17/17)
10	Hartzog, Danielle (Concordia (Ore.)) vs Humboldt State (11/20/17)
9	Jackson, Tayla (Simon Fraser) at Western Washington (11/28/17)
9	Cartwright, Bailey (Concordia (Ore.)) vs Saint Martin's (12/02/17)
9	Breen, Alisha (MSU Billings) vs Rocky Mountain Coll. (12/08/17)
9	Azorr, Sydney (Western Oregon) at Southern Oregon (12/12/17)

Free throw attempts

15	Simpson-Patu, Saniah (Saint Martin's) vs Academy of Art (11/11/17)
12	Hartzog, Danielle (Concordia (Ore.)) vs Humboldt State (11/20/17)
11	McPhee, Jordan (Seattle Pacific) at Azusa Pacific (11/17/17)

Rebounds

17	Schwecke, Anna (Western Washington) vs Simon Fraser (11/28/17)
17	Haining, Julia (Seattle Pacific) at Concordia (Ore.) (11/30/17)
16	Haining, Julia (Seattle Pacific) vs Humboldt State (11/10/17)
16	Breen, Alisha (MSU Billings) vs Chadron State (11/18/17)
15	Cartwright, Bailey (Concordia (Ore.)) at Stanislaus State (11/11/17)
15	Johansson, Elin (Saint Martin's) at Puget Sound (11/17/17)

Assists

10	Edwards, Jasmin (Central Washington) vs Eastern Oregon (11/21/17)
9	Kane, Rylee (MSU Billings) vs Providence (Mont.) (12/09/17)
8	Edwards, Jasmin (Central Washington) vs Hawaii Pacific (11/11/17)
8	Kane, Rylee (MSU Billings) vs Holy Names (11/11/17)
8	Breen, Alisha (MSU Billings) vs Holy Names (11/11/17)
8	Sarman, Keesha (Concordia (Ore.)) at MSU Billings (11/17/17)
8	Jones, Jessica (Simon Fraser) vs Academy of Art (11/22/17)
8	Drynan, Tayler (Simon Fraser) vs Academy of Art (11/22/17)

Blocked shots

4	Wandersee, Hannah (Alaska Anchorage) at Johnson & Wales (NC) (11/02/17)
4	Sewell, Josie (Alaska) vs Western State (11/17/17)
4	Wandersee, Hannah (Alaska Anchorage) vs Western State (11/18/17)
4	Swant, Sophie (Simon Fraser) vs Academy of Art (11/22/17)
4	Flores, Kaelie (Central Washington) vs Pacific Lutheran (11/25/17)
4	Cartwright, Bailey (Concordia (Ore.)) vs Seattle Pacific (11/30/17)

Steals

7	McNair, Kian (Alaska Anchorage) vs Maryland Eastern Sho (11/21/17)
7	Edwards, Jasmin (Central Washington) at Academy of Art (12/12/17)
6	McNair, Kian (Alaska Anchorage) vs Holy Names (11/17/17)
6	Cartwright, Bailey (Concordia (Ore.)) vs Multnomah (Ore.) (11/21/17)
6	Swant, Sophie (Simon Fraser) vs Academy of Art (11/22/17)

GNAC 2017-18 Team Single Game Highs

TEAM HIGHS (highest totals made by)

Points

99	Northwest Nazarene at Alaska (11/30/17)
96	MSU Billings vs Holy Names (11/11/17)
96	Northwest Nazarene vs Cal State Monterey B (11/11/17)
95	Alaska Anchorage at Johnson & Wales (NC) (11/02/17)
92	Alaska Anchorage vs Holy Names (11/17/17)

Margin

50 (95-45)	Alaska Anchorage at Johnson & Wales (NC) (11/02/17)
47 (83-36)	Concordia (Ore.) vs Multnomah (Ore.) (11/21/17)
44 (73-29)	Alaska vs Holy Names (11/18/17)
43 (92-49)	Alaska Anchorage vs Holy Names (11/17/17)
42 (99-57)	Northwest Nazarene at Alaska (11/30/17)

Field goals made

40	Northwest Nazarene vs Cal State Monterey B (11/11/17)
39	MSU Billings vs Holy Names (11/11/17)
36	Alaska Anchorage at Alaska (12/09/17)
35	Alaska Anchorage vs Holy Names (11/17/17)
34	Alaska Anchorage at Johnson & Wales (NC) (11/02/17)
34	Northwest Nazarene vs Point Loma (11/22/17)
34	Northwest Nazarene at Alaska (11/30/17)

Field goal attempts

80	Alaska Anchorage at Alaska (12/09/17)
78	Seattle Pacific vs Saint Martin's (12/09/17)
77	Simon Fraser at Cal Baptist (11/13/17)
77	Northwest Nazarene vs Point Loma (11/22/17)
76	Alaska Anchorage vs Western State (11/18/17)

Field goal percentage

.600 (39-65)	MSU Billings vs Holy Names (11/11/17)
.563 (40-71)	Northwest Nazarene vs Cal State Monterey B (11/11/17)
.528 (28-53)	Concordia (Ore.) vs Warner Pacific (12/09/17)
.525 (32-61)	MSU Billings vs Providence (Mont.) (12/09/17)
.523 (34-65)	Northwest Nazarene at Alaska (11/30/17)
.523 (23-44)	Saint Martin's at Concordia (Ore.) (12/02/17)

3-Pt FG made

18	Simon Fraser vs Academy of Art (11/22/17)
14	Western Washington vs Academy of Art (11/25/17)
13	Simon Fraser vs Hawaii Pacific (11/16/17)
13	Seattle Pacific vs Biola (11/22/17)
12	Alaska Anchorage vs Maryland Eastern Sho (11/21/17)
12	MSU Billings vs Providence (Mont.) (12/09/17)

3-Pt FG attempts

35	Simon Fraser vs Academy of Art (11/22/17)
32	Western Washington vs Academy of Art (11/25/17)
31	Seattle Pacific vs Biola (11/22/17)
31	Seattle Pacific vs Saint Martin's (12/09/17)
30	MSU Billings vs South Dakota Mines (11/21/17)
29	Alaska Anchorage vs Cal State LA (11/11/17)

3-Pt percentage

.542 (13-24)	Simon Fraser vs Hawaii Pacific (11/16/17)
.514 (18-35)	Simon Fraser vs Academy of Art (11/22/17)

Free throws made

26	Saint Martin's vs Dixie State (11/12/17)
24	Western Oregon vs Dixie State (11/17/17)
24	Western Oregon vs CSU San Bernardino (11/12/17)
24	Saint Martin's at Concordia (Ore.) (12/02/17)
23	Seattle Pacific vs Humboldt State (11/10/17)
23	Concordia (Ore.) vs Humboldt State (11/20/17)
23	Central Washington at Alaska (12/02/17)

Free throw attempts

34	Saint Martin's vs Dixie State (11/12/17)
32	Western Oregon vs Dixie State (11/17/17)
32	Concordia (Ore.) vs Humboldt State (11/20/17)
32	Central Washington at Alaska (12/02/17)
31	Northwest Nazarene at Alaska (11/30/17)
31	Saint Martin's at Concordia (Ore.) (12/02/17)

Free throw percentage

1.000 (7-7)	Alaska Anchorage vs Cal State LA (11/11/17)
.958 (23-24)	Seattle Pacific vs Humboldt State (11/10/17)
.938 (15-16)	Simon Fraser vs Cal Baptist (11/18/17)
.923 (24-26)	Western Oregon vs CSU San Bernardino (11/12/17)
.917 (22-24)	Western Washington at Fresno Pacific (11/10/17)
.917 (11-12)	Seattle Pacific vs Biola (11/22/17)

Rebounds

56	Central Washington vs Hawaii Pacific (11/11/17)
53	Alaska vs Hawaii Hilo (11/11/17)
53	Western Washington vs UC San Diego (11/17/17)
51	Alaska vs Holy Names (11/18/17)
50	Western Washington at Azusa Pacific (11/18/17)

Assists

31	MSU Billings vs Holy Names (11/11/17)
26	Alaska Anchorage vs Holy Names (11/17/17)
25	Alaska Anchorage vs Cal State LA (11/11/17)
24	Northwest Nazarene vs Cal State Monterey B (11/11/17)
24	Simon Fraser vs Academy of Art (11/22/17)

Steals

22	Alaska Anchorage vs Holy Names (11/17/17)
20	Alaska Anchorage vs Western State (11/18/17)
19	Concordia (Ore.) vs Multnomah (Ore.) (11/21/17)
18	Alaska Anchorage at Johnson & Wales (NC) (11/02/17)
17	Alaska Anchorage at Alaska (12/09/17)

Blocked shots

9	Alaska vs Holy Names (11/18/17)
8	MSU Billings vs Western Washington (11/30/17)
7	Alaska Anchorage at Johnson & Wales (NC) (11/02/17)
7	Alaska vs Western State (11/17/17)
7	Alaska Anchorage vs Western State (11/18/17)
7	Western Oregon vs Humboldt State (11/21/17)
7	Concordia (Ore.) vs Seattle Pacific (11/30/17)
7	Central Washington at Alaska Anchorage (11/30/17)