



Officials: Blake Harris, Brent Dugas, Nick Meyer

Murray St. - 58

Record: 3-1

NO.	Name	F	Min	FG	3P	FT	Rebounds			Fouls		TP	AS	TO	ST	Blocks		+/-
				M-A	M-A	M-A	OR	DR	TOT	PF	FD					BS	BA	
0	KJ Williams	F	31:28	8-14	0-2	2-4	3	7	10	1	2	18	1	3	0	1	0	0
55	DJ Burns	F	22:53	2-2	0-0	0-2	2	3	5	2	1	4	0	1	0	0	0	2
10	Tevin Brown	G	38:35	4-14	0-6	4-5	1	6	7	1	4	12	3	4	1	1	0	-9
13	Carter Collins	G	16:28	0-5	0-2	0-0	0	1	1	0	1	0	0	1	1	0	0	-11
14	Justice Hill	G	26:44	2-7	0-4	0-0	0	2	2	1	1	4	3	1	2	0	0	-12
31	Jordan Skipper-Brown		17:07	1-4	0-0	1-3	1	3	4	1	2	3	1	2	1	0	0	-10
32	Nicholas McMullen		08:32	1-1	0-0	2-5	2	0	2	1	3	4	0	1	0	1	0	-8
2	Trae Hannibal		22:49	4-6	0-0	2-4	1	1	2	3	2	10	3	3	0	0	1	5
1	DaQuan Smith		15:24	1-2	1-2	0-0	1	0	1	2	1	3	1	1	0	0	0	3
Team							4	0	4			0		0				
Totals				23-55	1-16	11-23	15	23	38	12	17	58	12	17	5	3	1	-8

Shooting By Period		
1 st FG%	12-28	42.9%
3PT%	1-9	11.1%
FT%	4-5	80%
2 nd FG%	11-27	40.7%
3PT%	0-7	0.0%
FT%	7-18	38.9%
GM FG%	23-55	41.8%
3PT%	1-16	6.3%
FT%	11-23	47.8%

Dead Ball Rebounds: 6, 0

Technical Fouls::NONE

ETSU - 66

Record: 2-2

NO.	Name	F	Min	FG	3P	FT	Rebounds			Fouls		TP	AS	TO	ST	Blocks		+/-
				M-A	M-A	M-A	OR	DR	TOT	PF	FD					BS	BA	
0	Silas Adheke	F	20:31	0-3	0-0	0-0	1	2	3	2	1	0	0	0	0	0	0	-4
14	Ty Brewer	F	23:11	4-10	1-4	0-0	1	3	4	5	1	9	0	4	4	0	0	6
2	Jordan King	G	31:46	2-7	1-5	0-1	1	4	5	1	3	5	5	3	1	0	0	5
4	David Sloan	G	30:35	4-9	1-3	2-2	1	1	2	0	3	11	1	0	0	0	0	5
25	Ledarius Brewer	G	31:31	7-12	1-4	2-2	0	5	5	1	3	17	2	2	2	1	0	8
33	Charlie Weber		22:37	6-7	1-2	0-0	0	1	1	4	0	13	0	0	0	0	0	8
22	Jaden Seymour		10:37	0-3	0-1	0-0	0	3	3	3	0	0	2	2	0	0	2	4
23	Vonnie Patterson		12:25	1-3	1-2	0-0	0	0	0	0	0	3	0	1	0	0	1	0
1	Mohab Yasser		16:47	3-5	1-1	1-2	3	1	4	1	1	8	0	0	0	0	0	8
Team							3	3	6			0		1				
Totals				27-59	7-22	5-7	10	23	33	17	12	66	10	13	7	1	3	8

Shooting By Period		
1 st FG%	13-33	39.4%
3PT%	5-14	35.7%
FT%	1-2	50%
2 nd FG%	14-26	53.8%
3PT%	2-8	25.0%
FT%	4-5	80%
GM FG%	27-59	45.8%
3PT%	7-22	31.8%
FT%	5-7	71.4%

Dead Ball Rebounds: 1, 0

Technical Fouls::NONE

	MSU	ETSU
Biggest lead	2 (1 st 18:04)	16 (2 nd 11:02)
Best Scoring Run	8 (1 st 9:21)	11 (2 nd 11:02)
Lead Changes	9	
Times Tied	3	
Time with Lead	02:29	32:55

Points from	MSU	ETSU
Turnovers	13	15
Paint	44	28
Second Chance	11	12
Fast Breaks	7	9
Bench	20	24

	Period by Period Scoring		
	1st	2nd	TOT
MSU	29	29	58
ETSU	32	34	66



Period 1

Quarter Starters:

ETSU	0 Adheke S	2 King J	4 Sloan D	14 Brewer T	25 Brewer L
MSU	0 Williams K	10 Brown T	13 Collins C	14 Hill J	55 Burns D

Game Time	ETSU	Score	Diff	MSU
20:00	14 BREWER T jumpball won			0 WILLIAMS K jumpball lost
19:47	2 KING J 3pt FG , jump shot missed			
19:43				0 WILLIAMS K defensive rebound (1)
19:33				0 WILLIAMS K 2pt FG in the paint, jump shot missed
19:31				offensive rebound (2)
19:27				10 BROWN T 3pt FG second chance, jump shot missed
19:25	14 BREWER T defensive rebound (1)			
19:18	14 BREWER T 3pt FG , jump shot missed			
19:13	2 KING J offensive rebound (1)			
18:58	25 BREWER L 2pt FG second chance in the paint, jump shot missed			
18:53				14 HILL J defensive rebound (1)
18:49				0 WILLIAMS K 2pt FG in the paint, jump shot missed
18:48	defensive rebound (3)			
18:27	0 ADHEKE S 2pt FG outside the paint, jump shot missed			
18:24				14 HILL J defensive rebound (2)
18:04		0-2	-2	0 WILLIAMS K 2pt FG in the paint, layup made (2)
18:04				10 BROWN T assist (1)
17:41	25 BREWER L 2pt FG in the paint, layup missed			
17:34	0 ADHEKE S offensive rebound (1)			
17:30	14 BREWER T 3pt FG second chance, jump shot made (3)	3-2	1	
17:16				55 BURNS D turnover travel (1)
17:01	2 KING J turnover lost ball (1)			13 COLLINS C steal (1)
16:38				0 WILLIAMS K 2pt FG from turnover in the paint, jump shot missed
16:35	0 ADHEKE S defensive rebound (2)			
16:29	14 BREWER T 3pt FG , jump shot missed			
16:19				0 WILLIAMS K defensive rebound (2)
16:14		3-4	-1	14 HILL J 2pt FG in the paint, layup made (2)
15:51	2 KING J 2pt FG in the paint, layup missed			
15:49				10 BROWN T defensive rebound (1)
15:49				10 BROWN T turnover travel (1)
15:49	Timeout media			
15:49	0 ADHEKE S substitution out			
15:49	33 WEBER C substitution in			
15:49				0 WILLIAMS K substitution out
15:49				55 BURNS D substitution out
15:49				31 SKIPPER-BROWN J substitution in
15:49				32 MCMULLEN N substitution in
15:42	25 BREWER L 2pt FG from turnover in the paint, jump shot made (2)	5-4	1	
15:20		5-6	-1	32 MCMULLEN N 2pt FG in the paint, jump shot made (2)
15:20				14 HILL J assist (1)
15:20	33 WEBER C foul shooting (1 - 1)			32 MCMULLEN N foul drawn (1)



Murray St. at ETSU

11/22/21 Community School of Naples, Naples
2021-22 Men's Basketball

Game Time: 5:30 PM
Game Duration: 1:59
Attendance: 317

Officials: Blake Harris, Brent Dugas, Nick Meyer

Game Time	ETSU	Score	Diff	MSU
15:19				32 MCMULLEN N free throw 1 - 1 missed
15:19	14 BREWER T defensive rebound (2)			
15:04	25 BREWER L 2pt FG outside the paint, jump shot made (4)	7-6	1	
14:47	14 BREWER T steal (1)			13 COLLINS C turnover lost ball (1)
14:42	14 BREWER T 2pt FG fast break from turnover in the paint, layup made (5)	9-6	3	
14:23				31 SKIPPER-BROWN J 2pt FG outside the paint, jump shot missed
14:19				31 SKIPPER-BROWN J offensive rebound (1)
14:19				31 SKIPPER-BROWN J 2pt FG second chance in the paint, jump shot missed
14:16	2 KING J defensive rebound (2)			
14:03	33 WEBER C 2pt FG in the paint, dunk, made (2)	11-6	5	
14:03	2 KING J assist (1)			
13:43	25 BREWER L foul drawn (1)			31 SKIPPER-BROWN J foul offensive (1 - 1)
13:43				31 SKIPPER-BROWN J turnover offensive (1)
13:43	2 KING J substitution out			
13:43	14 BREWER T substitution out			
13:43	22 SEYMOUR J substitution in			
13:43	23 PATTERSON V substitution in			
13:43				13 COLLINS C substitution out
13:43				32 MCMULLEN N substitution out
13:43				0 WILLIAMS K substitution in
13:43				2 HANNIBAL T substitution in
13:29	4 SLOAN D 2pt FG from turnover in the paint, jump shot made (2)	13-6	7	
13:14				14 HILL J substitution out
13:14				1 SMITH D substitution in
13:05		13-8	5	2 HANNIBAL T 2pt FG in the paint, layup made (2)
13:05				31 SKIPPER-BROWN J assist (1)
12:47	4 SLOAN D 3pt FG , jump shot missed			
12:43				31 SKIPPER-BROWN J defensive rebound (2)
12:38				1 SMITH D turnover lost ball (1)
12:38	25 BREWER L substitution out			
12:38	2 KING J substitution in			
12:21	33 WEBER C 2pt FG from turnover in the paint, jump shot made (4)	15-8	7	
12:21	22 SEYMOUR J assist (1)			
11:49		15-10	5	0 WILLIAMS K 2pt FG in the paint, jump shot made (4)
11:23	22 SEYMOUR J 3pt FG , jump shot missed			
11:18				0 WILLIAMS K defensive rebound (3)
11:11		15-12	3	10 BROWN T 2pt FG in the paint, layup made (2)
10:50	23 PATTERSON V 3pt FG , jump shot made (3)	18-12	6	
10:50	22 SEYMOUR J assist (2)			
10:34		18-14	4	10 BROWN T 2pt FG in the paint, layup made (4)
10:29	22 SEYMOUR J turnover lost ball (1)			10 BROWN T steal (1)
10:28	22 SEYMOUR J foul shooting (1 - 2)			10 BROWN T foul drawn (1)
10:28				Timeout media
10:28	4 SLOAN D substitution out			
10:28	22 SEYMOUR J substitution out			
10:28	33 WEBER C substitution out			



Murray St. at ETSU

11/22/21 Community School of Naples, Naples
2021-22 Men's Basketball

Game Time: 5:30 PM
Game Duration: 1:59
Attendance: 317

Officials: Blake Harris, Brent Dugas, Nick Meyer

Game Time	ETSU	Score	Diff	MSU
10:28	0 ADHEKE S substitution in			
10:28	14 BREWER T substitution in			
10:28	25 BREWER L substitution in			
10:28				31 SKIPPER-BROWN J substitution out
10:28				55 BURNS D substitution in
10:28		18-15	3	10 BROWN T free throw fast break 1 - 2 made (5)
10:28		18-16	2	10 BROWN T free throw fast break 2 - 2 made (6)
10:24	14 BREWER T foul offensive (1 - 3)			1 SMITH D foul drawn (1)
10:24	14 BREWER T turnover offensive (1)			
10:24	23 PATTERSON V substitution out			
10:24	1 YASSER M substitution in			
10:03		18-18	0	2 HANNIBAL T 2pt FG from turnover in the paint, jump shot made (4)
09:41	14 BREWER T foul drawn (1)			55 BURNS D foul personal (1 - 2)
09:37	14 BREWER T 2pt FG in the paint, jump shot missed			
09:34				0 WILLIAMS K defensive rebound (4)
09:21		18-20	-2	0 WILLIAMS K 2pt FG in the paint, layup made (6)
09:21				2 HANNIBAL T assist (1)
09:02	2 KING J 3pt FG , jump shot made (3)	21-20	1	
08:41				1 SMITH D 3pt FG , jump shot missed
08:37	25 BREWER L defensive rebound (1)			
08:29	25 BREWER L 2pt FG in the paint, layup made (6)	23-20	3	
08:09				10 BROWN T 2pt FG in the paint, jump shot missed
08:06	0 ADHEKE S defensive rebound (3)			
08:02	2 KING J 3pt FG , jump shot missed			
07:57	14 BREWER T offensive rebound (3)			
07:56	14 BREWER T 2pt FG second chance in the paint, jump shot missed			
07:53				55 BURNS D defensive rebound (1)
07:33		23-22	1	55 BURNS D 2pt FG in the paint, jump shot made (2)
07:33				2 HANNIBAL T assist (2)
07:10	Timeout media			
07:10	2 KING J foul drawn (1)			1 SMITH D foul personal (1 - 3)
07:10	2 KING J substitution out			
07:10	25 BREWER L substitution out			
07:10	4 SLOAN D substitution in			
07:10	23 PATTERSON V substitution in			
07:10				0 WILLIAMS K substitution out
07:10				1 SMITH D substitution out
07:10				10 BROWN T substitution out
07:10				13 COLLINS C substitution in
07:10				14 HILL J substitution in
07:10				32 MCMULLEN N substitution in
06:51	4 SLOAN D 2pt FG outside the paint, jump shot missed			
06:44	1 YASSER M offensive rebound (1)			
06:44	1 YASSER M 2pt FG second chance in the paint, layup missed			
06:43				55 BURNS D defensive rebound (2)
06:23	14 BREWER T steal (2)			14 HILL J turnover lost ball (1)
06:14	14 BREWER T 3pt FG from turnover, jump shot missed			
06:09	1 YASSER M offensive rebound (2)			



Murray St. at ETSU

11/22/21 Community School of Naples, Naples
2021-22 Men's Basketball

Game Time: 5:30 PM
Game Duration: 1:59
Attendance: 317

Officials: Blake Harris, Brent Dugas, Nick Meyer

Game Time	ETSU	Score	Diff	MSU
06:08	1 YASSER M 2pt FG from turnover second chance in the paint, jump shot missed			
06:05				55 BURNS D defensive rebound (3)
05:50				13 COLLINS C 2pt FG in the paint, jump shot missed
05:45				32 MCMULLEN N offensive rebound (1)
05:45	0 ADHEKE S foul shooting (1 - 4)			32 MCMULLEN N foul drawn (2)
05:45		23-23	0	32 MCMULLEN N free throw 1 - 2 made (3)
05:45	0 ADHEKE S substitution out			
05:45	33 WEBER C substitution in			
05:45				2 HANNIBAL T substitution out
05:45				10 BROWN T substitution in
05:45		23-24	-1	32 MCMULLEN N free throw 2 - 2 made (4)
05:28				55 BURNS D substitution out
05:28				31 SKIPPER-BROWN J substitution in
05:13	4 SLOAN D 2pt FG in the paint, layup missed			
05:11	offensive rebound (13)			
04:57	33 WEBER C 3pt FG second chance, jump shot made (7)	26-24	2	
04:57	4 SLOAN D assist (1)			
04:37	14 BREWER T steal (3)			32 MCMULLEN N turnover lost ball (1)
04:31	23 PATTERSON V 2pt FG from turnover in the paint, jump shot blocked			
04:31				32 MCMULLEN N block (1)
04:31	offensive rebound (14)			
04:31	1 YASSER M substitution out			
04:31	25 BREWER L substitution in			
04:31				32 MCMULLEN N substitution out
04:31				0 WILLIAMS K substitution in
04:27	14 BREWER T turnover travel (2)			
04:15		26-26	0	0 WILLIAMS K 2pt FG from turnover in the paint, jump shot made (8)
04:15				14 HILL J assist (2)
03:49	23 PATTERSON V 3pt FG , jump shot missed			
03:44				10 BROWN T defensive rebound (2)
03:39	Timeout media			
03:39	4 SLOAN D substitution out			
03:39	33 WEBER C substitution out			
03:39	0 ADHEKE S substitution in			
03:39	2 KING J substitution in			
03:35				13 COLLINS C 2pt FG in the paint, jump shot missed
03:30	25 BREWER L defensive rebound (2)			
03:24	2 KING J turnover lost ball (2)			14 HILL J steal (1)
03:21	23 PATTERSON V substitution out			
03:21	1 YASSER M substitution in			
03:13				14 HILL J 3pt FG from turnover, jump shot missed
03:08				0 WILLIAMS K offensive rebound (5)
02:50				10 BROWN T 3pt FG from turnover second chance, jump shot missed
02:45				offensive rebound (17)
02:35				0 WILLIAMS K 3pt FG from turnover second chance, jump shot missed
02:32	2 KING J defensive rebound (3)			



Murray St. at ETSU

11/22/21 Community School of Naples, Naples
2021-22 Men's Basketball

Game Time: 5:30 PM
Game Duration: 1:59
Attendance: 317

Officials: Blake Harris, Brent Dugas, Nick Meyer

Game Time	ETSU	Score	Diff	MSU
02:17	25 BREWER L 3pt FG , jump shot made (9)	29-26	3	
02:17	2 KING J assist (2)			
01:51				13 COLLINS C 3pt FG , jump shot missed
01:49				offensive rebound (18)
01:37				13 COLLINS C 3pt FG second chance, jump shot missed
01:33	1 YASSER M defensive rebound (3)			
01:14	14 BREWER T turnover 3 seconds (3)			
01:14	14 BREWER T substitution out			
01:14	22 SEYMOUR J substitution in			
01:14				13 COLLINS C substitution out
01:14				1 SMITH D substitution in
01:05				14 HILL J substitution out
01:05				2 HANNIBAL T substitution in
00:51				0 WILLIAMS K 3pt FG from turnover, jump shot missed
00:47				1 SMITH D offensive rebound (1)
00:46	25 BREWER L steal (1)			10 BROWN T turnover lost ball (2)
00:43	1 YASSER M foul drawn (1)			2 HANNIBAL T foul shooting (1 - 4)
00:43	1 YASSER M free throw fast break 1 - 2 missed			
00:43	offensive dead ball rebound (1)			
00:43	1 YASSER M free throw fast break 2 - 2 made (1)	30-26	4	
00:41	Timeout 30 Sec			
00:24		30-29	1	1 SMITH D 3pt FG , jump shot made (3)
00:24				0 WILLIAMS K assist (1)
00:05	2 KING J 3pt FG , jump shot missed			
00:02	1 YASSER M offensive rebound (4)			
00:02	1 YASSER M 2pt FG second chance in the paint, layup made (3)	32-29	3	
END OF PERIOD				
ETSU 32-29 MSU				



Murray St. at ETSU

11/22/21 Community School of Naples, Naples
2021-22 Men's Basketball

Game Time: 5:30 PM
Game Duration: 1:59
Attendance: 317

Officials: Blake Harris, Brent Dugas, Nick Meyer

Murray St. - 29

NO.	Name	F	Min	FG			Rebounds			Fouls		TP	AS	TO	ST	Blocks		+/-
				M-A	M-A	M-A	OR	DR	TOT	PF	FD					BS	BA	
0	KJ Williams	F	15:15	4-9	0-2	0-0	1	4	5	0	0	8	1	0	0	0	0	4
55	DJ Burns	F	09:11	1-1	0-0	0-0	0	3	3	1	0	2	0	1	0	0	0	6
10	Tevin Brown	G	18:35	2-5	0-2	2-2	0	2	2	0	1	6	1	2	1	0	0	-4
13	Carter Collins	G	12:13	0-4	0-2	0-0	0	0	0	0	0	0	0	1	1	0	0	-7
14	Justice Hill	G	12:51	1-2	0-1	0-0	0	2	2	0	0	2	2	1	1	0	0	-9
31	Jordan Skipper-Brown		10:49	0-2	0-0	0-0	1	1	2	1	0	0	1	1	0	0	0	-9
32	Nicholas McMullen		04:45	1-1	0-0	2-3	1	0	1	0	2	4	0	1	0	1	0	-7
2	Trae Hannibal		09:03	2-2	0-0	0-0	0	0	0	1	0	4	2	0	0	0	0	5
1	DaQuan Smith		07:18	1-2	1-2	0-0	1	0	1	1	1	3	0	1	0	0	0	6
Team							3	0	3			0		0				
Totals				12-28	1-9	4-5	7	12	19	4	4	29	7	8	3	1	0	-3

Shooting By Period		
1st FG%	12-28	42.9%
3PT%	1-9	11.1%
FT%	4-5	80%
GM FG%	12-28	42.9%
3PT%	1-9	11.1%
FT%	4-5	80.0%

Dead Ball Rebounds: 0, 0

Technical Fouls::NONE

ETSU - 32

NO.	Name	F	Min	FG			Rebounds			Fouls		TP	AS	TO	ST	Blocks		+/-
				M-A	M-A	M-A	OR	DR	TOT	PF	FD					BS	BA	
0	Silas Adheke	F	12:33	0-1	0-0	0-0	1	2	3	1	0	0	0	0	0	0	0	-2
14	Ty Brewer	F	15:31	2-7	1-4	0-0	1	2	3	1	1	5	0	3	3	0	0	4
2	Jordan King	G	15:24	1-5	1-4	0-0	1	2	3	0	1	3	2	2	0	0	0	4
4	David Sloan	G	13:03	1-4	0-1	0-0	0	0	0	0	0	2	1	0	0	0	0	3
25	Ledarrus Brewer	G	15:11	4-6	1-1	0-0	0	2	2	0	1	9	0	0	1	0	0	3
33	Charlie Weber		07:27	3-3	1-1	0-0	0	0	0	1	0	7	0	0	0	0	0	5
22	Jaden Seymour		04:29	0-1	0-1	0-0	0	0	0	1	0	0	2	1	0	0	0	-1
23	Vonnie Patterson		07:08	1-3	1-2	0-0	0	0	0	0	0	3	0	0	0	0	1	-4
1	Mohab Yasser		09:14	1-3	0-0	1-2	3	1	4	0	1	3	0	0	0	0	0	3
Team							2	1	3			0		0				
Totals				13-33	5-14	1-2	8	10	18	4	4	32	5	6	4	0	1	3

Shooting By Period		
1st FG%	13-33	39.4%
3PT%	5-14	35.7%
FT%	1-2	50%
GM FG%	13-33	39.4%
3PT%	5-14	35.7%
FT%	1-2	50.0%

Dead Ball Rebounds: 1, 0

Technical Fouls::NONE

	MSU	ETSU
Biggest lead	2 (1 st 18:04)	7 (1 st 13:29)
Best Scoring Run	8(1 st 9:21)	8(1 st 13:29)
Lead Changes	9	
Times Tied	3	
Time with Lead	02:29	12:55

Points from	MSU	ETSU
Turnovers	6	9
Paint	22	14
Second Chance	2	8
Fast Breaks	2	3
Bench	11	13

	Period by Period Scoring		
	1st	2nd	TOT
MSU	29	29	58
ETSU	32	34	66



Murray St. at ETSU

11/22/21 Community School of Naples, Naples
2021-22 Men's Basketball

Game Time: 5:30 PM
Game Duration: 1:59
Attendance: 317

Officials: Blake Harris, Brent Dugas, Nick Meyer

Period 2

Quarter Starters:

ETSU	0 Adheke S	2 King J	4 Sloan D	14 Brewer T	25 Brewer L
MSU	0 Williams K	10 Brown T	13 Collins C	14 Hill J	55 Burns D

Game Time	ETSU	Score	Diff	MSU
20:00	1 YASSER M substitution out			
20:00	22 SEYMOUR J substitution out			
20:00	4 SLOAN D substitution in			
20:00	14 BREWER T substitution in			
20:00				1 SMITH D substitution out
20:00				2 HANNIBAL T substitution out
20:00				31 SKIPPER-BROWN J substitution out
20:00				13 COLLINS C substitution in
20:00				14 HILL J substitution in
20:00				55 BURNS D substitution in
19:46				14 HILL J 3pt FG , jump shot missed
19:43	defensive rebound (19)			
19:16	25 BREWER L 2pt FG outside the paint, jump shot made (11)	34-29	5	
18:44				10 BROWN T turnover out of bounds (3)
18:33	turnover (7)			
18:28	14 BREWER T foul personal (2 - 1)			13 COLLINS C foul drawn (1)
18:19				13 COLLINS C 2pt FG from turnover outside the paint, jump shot missed
18:15				0 WILLIAMS K offensive rebound (6)
18:14		34-31	3	0 WILLIAMS K 2pt FG from turnover second chance in the paint, layup made (10)
17:50	25 BREWER L 3pt FG , jump shot missed			
17:45				13 COLLINS C defensive rebound (1)
17:22				14 HILL J 2pt FG outside the paint, jump shot missed
17:18	2 KING J defensive rebound (4)			
17:16	14 BREWER T substitution out			
17:16	33 WEBER C substitution in			
16:57	25 BREWER L 2pt FG outside the paint, jump shot made (13)	36-31	5	
16:32		36-33	3	10 BROWN T 2pt FG in the paint, layup made (8)
16:07	0 ADHEKE S substitution out			
16:07	14 BREWER T substitution in			
16:04	25 BREWER L foul drawn (2)			55 BURNS D foul shooting (2 - 1)
16:00	25 BREWER L free throw 1 - 2 made (14)	37-33	4	
16:00	25 BREWER L free throw 2 - 2 made (15)	38-33	5	
15:58	25 BREWER L substitution out			
15:58	23 PATTERSON V substitution in			
15:49				14 HILL J 3pt FG , jump shot missed
15:45	14 BREWER T defensive rebound (4)			
15:45	14 BREWER T 2pt FG fast break in the paint, dunk, made (7)	40-33	7	
15:45	2 KING J assist (3)			
15:45	Timeout media			
15:45				Timeout 30 Sec
15:45	2 KING J substitution out			
15:45	1 YASSER M substitution in			



Murray St. at ETSU

11/22/21 Community School of Naples, Naples
2021-22 Men's Basketball

Game Time: 5:30 PM
Game Duration: 1:59
Attendance: 317

Officials: Blake Harris, Brent Dugas, Nick Meyer

Game Time	ETSU	Score	Diff	MSU
15:45				13 COLLINS C substitution out
15:45				2 HANNIBAL T substitution in
15:23				0 WILLIAMS K turnover out of bounds (1)
15:23	Timeout media			
15:21	14 BREWER T turnover (4)			
15:18				0 WILLIAMS K turnover travel (2)
15:18				0 WILLIAMS K substitution out
15:18				32 MCMULLEN N substitution in
14:48	14 BREWER T 2pt FG from turnover outside the paint, jump shot missed			
14:45				10 BROWN T defensive rebound (3)
14:32		40-35	5	14 HILL J 2pt FG in the paint, layup made (4)
14:03	33 WEBER C 2pt FG outside the paint, jump shot made (9)	42-35	7	
13:45	14 BREWER T foul shooting (3 - 2)			55 BURNS D foul drawn (1)
13:45				55 BURNS D free throw 1 - 2 missed
13:45				offensive dead ball rebound (1)
13:45	14 BREWER T substitution out			
13:45	23 PATTERSON V substitution out			
13:45	22 SEYMOUR J substitution in			
13:45	25 BREWER L substitution in			
13:45				55 BURNS D free throw 2 - 2 missed
13:43	33 WEBER C defensive rebound (1)			
13:27	22 SEYMOUR J 2pt FG in the paint, layup blocked			
13:27				10 BROWN T block (1)
13:22				10 BROWN T defensive rebound (4)
13:15				10 BROWN T 3pt FG , jump shot missed
13:11	25 BREWER L defensive rebound (3)			
13:09	1 YASSER M 2pt FG fast break in the paint, layup made (5)	44-35	9	
13:09	25 BREWER L assist (1)			
12:39				2 HANNIBAL T turnover lost ball (1)
12:39				Timeout 30 Sec
12:39				14 HILL J substitution out
12:39				32 MCMULLEN N substitution out
12:39				55 BURNS D substitution out
12:39				0 WILLIAMS K substitution in
12:39				1 SMITH D substitution in
12:39				31 SKIPPER-BROWN J substitution in
12:19	33 WEBER C 2pt FG from turnover in the paint, layup made (11)	46-35	11	
12:12				2 HANNIBAL T 2pt FG in the paint, layup blocked
12:12	25 BREWER L block (1)			
12:12				offensive rebound (24)
12:07	22 SEYMOUR J foul personal (2 - 3)			10 BROWN T foul drawn (2)
12:07	4 SLOAN D substitution out			
12:07	2 KING J substitution in			
11:56	33 WEBER C foul shooting (2 - 4)			0 WILLIAMS K foul drawn (1)
11:56	Timeout media			
11:56				0 WILLIAMS K free throw 1 - 2 missed
11:56				offensive dead ball rebound (2)
11:56				0 WILLIAMS K free throw 2 - 2 missed



Murray St. at ETSU

11/22/21 Community School of Naples, Naples
2021-22 Men's Basketball

Game Time: 5:30 PM
Game Duration: 1:59
Attendance: 317

Officials: Blake Harris, Brent Dugas, Nick Meyer

Game Time	ETSU	Score	Diff	MSU
11:55				2 HANNIBAL T offensive rebound (1)
11:47				31 SKIPPER-BROWN J 2pt FG second chance outside the paint, jump shot missed
11:44	22 SEYMOUR J defensive rebound (1)			
11:39	25 BREWER L 2pt FG in the paint, layup made (17)	48-35	13	
11:27	1 YASSER M foul shooting (1 - 5)			31 SKIPPER-BROWN J foul drawn (1)
11:27				31 SKIPPER-BROWN J free throw 1 - 2 missed
11:27				offensive dead ball rebound (3)
11:26				31 SKIPPER-BROWN J free throw 2 - 2 missed
11:24	22 SEYMOUR J defensive rebound (2)			
11:02	1 YASSER M 3pt FG , jump shot made (8)	51-35	16	
11:02	2 KING J assist (4)			
10:48	25 BREWER L steal (2)			2 HANNIBAL T turnover lost ball (2)
10:38	25 BREWER L 3pt FG from turnover, jump shot missed			
10:35				31 SKIPPER-BROWN J defensive rebound (3)
10:22				10 BROWN T 2pt FG in the paint, layup missed
10:19	22 SEYMOUR J defensive rebound (3)			
10:09	25 BREWER L turnover lost ball (1)			31 SKIPPER-BROWN J steal (1)
10:03		51-37	14	2 HANNIBAL T 2pt FG fast break from turnover in the paint, dunk, made (6)
10:03				1 SMITH D assist (1)
09:39	22 SEYMOUR J 2pt FG in the paint, jump shot blocked			
09:39				0 WILLIAMS K block (1)
09:39	offensive rebound (27)			
09:39	22 SEYMOUR J substitution out			
09:39	25 BREWER L substitution out			
09:39	4 SLOAN D substitution in			
09:39	14 BREWER T substitution in			
09:39				31 SKIPPER-BROWN J substitution out
09:39				55 BURNS D substitution in
09:30	4 SLOAN D 2pt FG second chance outside the paint, jump shot made (4)	53-37	16	
09:30	2 KING J assist (5)			
09:17				10 BROWN T 3pt FG , jump shot missed
09:14				55 BURNS D offensive rebound (4)
09:13		53-39	14	55 BURNS D 2pt FG second chance in the paint, layup made (4)
09:11	14 BREWER T substitution out			
09:11	0 ADHEKE S substitution in			
08:54	2 KING J turnover out of bounds (3)			
08:31		53-41	12	2 HANNIBAL T 2pt FG from turnover in the paint, layup made (8)
08:31				10 BROWN T assist (2)
08:12	Timeout 30 Sec			
08:12	Timeout media			
08:12	1 YASSER M substitution out			
08:12	25 BREWER L substitution in			
08:06	0 ADHEKE S 2pt FG in the paint, jump shot missed			
08:03				0 WILLIAMS K defensive rebound (7)
07:56		53-43	10	0 WILLIAMS K 2pt FG in the paint, layup made (12)
07:44	4 SLOAN D foul drawn (1)			1 SMITH D foul personal (2 - 2)



Murray St. at ETSU

11/22/21 Community School of Naples, Naples
2021-22 Men's Basketball

Game Time: 5:30 PM
Game Duration: 1:59
Attendance: 317

Officials: Blake Harris, Brent Dugas, Nick Meyer

Game Time	ETSU	Score	Diff	MSU
07:44	0 ADHEKE S substitution out			
07:44	14 BREWER T substitution in			
07:33	4 SLOAN D 3pt FG , jump shot missed			
07:29				0 WILLIAMS K defensive rebound (8)
07:26	2 KING J foul shooting (1 - 6)			2 HANNIBAL T foul drawn (1)
07:26				2 HANNIBAL T free throw fast break 1 - 2 missed
07:26		53-44	9	offensive dead ball rebound (4)
07:26		53-44	9	2 HANNIBAL T free throw fast break 2 - 2 made (9)
07:05	33 WEBER C 2pt FG in the paint, dunk, made (13)	55-44	11	
07:05	25 BREWER L assist (2)			
06:55	14 BREWER T steal (4)			2 HANNIBAL T turnover lost ball (3)
06:52	14 BREWER T 2pt FG fast break from turnover in the paint, dunk, made (9)	57-44	13	
06:32		57-46	11	10 BROWN T 2pt FG in the paint, jump shot made (10)
06:32	33 WEBER C foul shooting (3 - 7)			10 BROWN T foul drawn (3)
06:32				0 WILLIAMS K substitution out
06:32				2 HANNIBAL T substitution out
06:32				14 HILL J substitution in
06:32				32 MCMULLEN N substitution in
06:32		57-47	10	10 BROWN T free throw 1 - 1 made (11)
06:08	33 WEBER C 3pt FG , jump shot missed			
06:05				10 BROWN T defensive rebound (5)
05:52				10 BROWN T 3pt FG , jump shot missed
05:46				32 MCMULLEN N offensive rebound (2)
05:46	14 BREWER T foul shooting (4 - 8)			32 MCMULLEN N foul drawn (3)
05:46				32 MCMULLEN N free throw 1 - 2 missed
05:46				offensive dead ball rebound (5)
05:46	14 BREWER T substitution out			
05:46	0 ADHEKE S substitution in			
05:45				32 MCMULLEN N free throw 2 - 2 missed
05:43				55 BURNS D offensive rebound (5)
05:29				10 BROWN T 2pt FG second chance outside the paint, jump shot missed
05:24	25 BREWER L defensive rebound (4)			
05:24	25 BREWER L foul drawn (3)			32 MCMULLEN N foul personal (1 - 3)
05:24	33 WEBER C substitution out			
05:24	23 PATTERSON V substitution in			
05:24				32 MCMULLEN N substitution out
05:24				0 WILLIAMS K substitution in
05:04	4 SLOAN D 2pt FG in the paint, floating jump shot made (6)	59-47	12	
04:46	0 ADHEKE S foul drawn (1)			0 WILLIAMS K foul offensive (1 - 4)
04:46				0 WILLIAMS K turnover offensive (3)
04:46	23 PATTERSON V substitution out			
04:46	22 SEYMOUR J substitution in			
04:33				1 SMITH D substitution out
04:33				2 HANNIBAL T substitution in
04:20	0 ADHEKE S 2pt FG from turnover in the paint, layup missed			
04:15				0 WILLIAMS K defensive rebound (9)
03:58				2 HANNIBAL T 2pt FG outside the paint, jump shot missed
03:54	2 KING J defensive rebound (5)			



Murray St. at ETSU

11/22/21 Community School of Naples, Naples
2021-22 Men's Basketball

Game Time: 5:30 PM
Game Duration: 1:59
Attendance: 317

Officials: Blake Harris, Brent Dugas, Nick Meyer

Game Time	ETSU	Score	Diff	MSU
03:33	4 SLOAN D 2pt FG in the paint, jump shot missed			
03:30				10 BROWN T defensive rebound (6)
03:30	2 KING J steal (1)			10 BROWN T turnover lost ball (4)
03:25	2 KING J 3pt FG from turnover, jump shot missed			
03:22				2 HANNIBAL T defensive rebound (2)
03:19				10 BROWN T 2pt FG in the paint, layup missed
03:18				0 WILLIAMS K offensive rebound (10)
03:18				0 WILLIAMS K 2pt FG second chance in the paint, layup missed
03:18				offensive dead ball rebound (6)
03:18	0 ADHEKE S foul shooting (2 - 9)			0 WILLIAMS K foul drawn (2)
03:18	Timeout media			
03:18	0 ADHEKE S substitution out			
03:18	33 WEBER C substitution in			
03:18				55 BURNS D substitution out
03:18				31 SKIPPER-BROWN J substitution in
03:18		59-48	11	0 WILLIAMS K free throw 1 - 2 made (13)
03:18		59-49	10	0 WILLIAMS K free throw 2 - 2 made (14)
03:14	Timeout 30 Sec			
03:13	25 BREWER L turnover bad pass (2)			
03:08	25 BREWER L foul shooting (1 - 10)			10 BROWN T foul drawn (4)
03:08		59-50	9	10 BROWN T free throw fast break 1 - 2 made (12)
03:08	22 SEYMOUR J substitution out			
03:08	14 BREWER T substitution in			
03:08				10 BROWN T free throw fast break 2 - 2 missed
03:05				10 BROWN T offensive rebound (7)
03:00		59-52	7	31 SKIPPER-BROWN J 2pt FG second chance in the paint, layup made (2)
03:00				10 BROWN T assist (3)
03:00	14 BREWER T foul shooting (5 - 11)			31 SKIPPER-BROWN J foul drawn (2)
03:00	14 BREWER T substitution out			
03:00	23 PATTERSON V substitution in			
03:00		59-53	6	31 SKIPPER-BROWN J free throw 1 - 1 made (3)
02:59	2 KING J foul drawn (2)			10 BROWN T foul personal (1 - 5)
02:09	25 BREWER L 3pt FG , jump shot missed			
02:09				31 SKIPPER-BROWN J defensive rebound (4)
02:08		59-55	4	0 WILLIAMS K 2pt FG in the paint, jump shot made (16)
02:08				2 HANNIBAL T assist (3)
01:55	2 KING J 2pt FG outside the paint, jump shot made (5)	61-55	6	
01:40		61-57	4	0 WILLIAMS K 2pt FG in the paint, layup made (18)
01:40				14 HILL J assist (3)
01:38				Timeout 60 Sec
01:11	4 SLOAN D 3pt FG , jump shot made (9)	64-57	7	
00:53				14 HILL J 3pt FG , jump shot missed
00:50	25 BREWER L defensive rebound (5)			
00:43	4 SLOAN D foul drawn (2)			14 HILL J foul personal (1 - 6)
00:37	23 PATTERSON V turnover lost ball (1)			14 HILL J steal (2)
00:34				31 SKIPPER-BROWN J turnover bad pass (2)
00:34	23 PATTERSON V substitution out			
00:34	22 SEYMOUR J substitution in			



Murray St. at ETSU

11/22/21 Community School of Naples, Naples
2021-22 Men's Basketball

Game Time: 5:30 PM
Game Duration: 1:59
Attendance: 317

Officials: Blake Harris, Brent Dugas, Nick Meyer

Game Time	ETSU	Score	Diff	MSU
00:24	2 KING J foul drawn (3)			2 HANNIBAL T foul personal (2 - 7)
00:23	2 KING J 1&1 free throw 1 missed			
00:22	4 SLOAN D offensive rebound (1)			
00:20	4 SLOAN D foul drawn (3)			2 HANNIBAL T foul personal (3 - 8)
00:20	4 SLOAN D 1&1 free throw 1 made (10)	65-57	8	
00:20	4 SLOAN D 1&1 free throw 2 made (11)	66-57	9	
00:20	Timeout 60 Sec			
00:13	33 WEBER C foul shooting (4 - 12)			2 HANNIBAL T foul drawn (2)
00:13		66-58	8	2 HANNIBAL T free throw fast break 1 - 2 made (10)
00:13				2 HANNIBAL T free throw fast break 2 - 2 missed
00:12	defensive rebound (32)			
00:10	22 SEYMOUR J foul offensive (3 - 13)			14 HILL J foul drawn (1)
00:10	22 SEYMOUR J turnover offensive (2)			
00:10	22 SEYMOUR J substitution out			
00:10	0 ADHEKE S substitution in			
00:07				10 BROWN T 3pt FG from turnover, jump shot missed
00:02	4 SLOAN D defensive rebound (2)			
END OF GAME				
ETSU 66-58 MSU				



Murray St. at ETSU

11/22/21 Community School of Naples, Naples
2021-22 Men's Basketball

Game Time: 5:30 PM
Game Duration: 1:59
Attendance: 317

Officials: Blake Harris, Brent Dugas, Nick Meyer

Murray St. - 29

NO.	Name	F	Min	FG			Rebounds			Fouls		TP	AS	TO	ST	Blocks		+/-
				M-A	M-A	M-A	OR	DR	TOT	PF	FD					BS	BA	
0	KJ Williams	F	16:13	4-5	0-0	2-4	2	3	5	1	2	10	0	3	0	1	0	-4
55	DJ Burns	F	13:42	1-1	0-0	0-2	2	0	2	1	1	2	0	0	0	0	0	-4
10	Tevin Brown	G	20:00	2-9	0-4	2-3	1	4	5	1	3	6	2	2	0	1	0	-5
13	Carter Collins	G	04:15	0-1	0-0	0-0	0	1	1	0	1	0	0	0	0	0	0	-4
14	Justice Hill	G	13:53	1-5	0-3	0-0	0	0	0	1	1	2	1	0	1	0	0	-3
2	Trae Hannibal		13:46	2-4	0-0	2-4	1	1	2	2	2	6	1	3	0	0	1	0
32	Nicholas McMullen		03:47	0-0	0-0	0-2	1	0	1	1	1	0	0	0	0	0	0	-1
1	DaQuan Smith		08:06	0-0	0-0	0-0	0	0	0	1	0	0	1	0	0	0	0	-3
31	Jordan Skipper-Brown		06:18	1-2	0-0	1-3	0	2	2	0	2	3	0	1	1	0	0	-1
Team							1	0	1			0		0				
Totals				11-27	0-7	7-18	8	11	19	8	13	29	5	9	2	2	1	-5

Shooting By Period		
2nd FG%	11-27	40.7%
3PT%	0-7	0.0%
FT%	7-18	38.9%
GM FG%	11-27	40.7%
3PT%	0-7	0.0%
FT%	7-18	38.9%

Dead Ball Rebounds: 6, 0

Technical Fouls::NONE

ETSU - 34

NO.	Name	F	Min	FG			Rebounds			Fouls		TP	AS	TO	ST	Blocks		+/-
				M-A	M-A	M-A	OR	DR	TOT	PF	FD					BS	BA	
0	Silas Adheke	F	07:58	0-2	0-0	0-0	0	0	0	1	1	0	0	0	0	0	0	-2
14	Ty Brewer	F	07:40	2-3	0-0	0-0	0	1	1	4	0	4	0	1	1	0	0	2
2	Jordan King	G	16:22	1-2	0-1	0-1	0	2	2	1	2	2	3	1	1	0	0	1
4	David Sloan	G	17:32	3-5	1-2	2-2	1	1	2	0	3	9	0	0	0	0	0	2
25	Ledarius Brewer	G	16:20	3-6	0-3	2-2	0	3	3	1	2	8	2	2	1	1	0	5
33	Charlie Weber		15:10	3-4	0-1	0-0	0	1	1	3	0	6	0	0	0	0	0	3
23	Vonnie Patterson		05:17	0-0	0-0	0-0	0	0	0	0	0	0	0	1	0	0	0	4
1	Mohab Yasser		07:33	2-2	1-1	0-0	0	0	0	1	0	5	0	0	0	0	0	5
22	Jaden Seymour		06:08	0-2	0-0	0-0	0	3	3	2	0	0	0	1	0	0	2	5
Team							1	2	3			0		1				
Totals				14-26	2-8	4-5	2	13	15	13	8	34	5	7	3	1	2	5

Shooting By Period		
2nd FG%	14-26	53.8%
3PT%	2-8	25.0%
FT%	4-5	80%
GM FG%	14-26	53.8%
3PT%	2-8	25.0%
FT%	4-5	80.0%

Dead Ball Rebounds: 0, 0

Technical Fouls::NONE

	MSU	ETSU
Biggest lead	0 (1 st 20:00)	16 (2 nd 11:02)
Best Scoring Run	8(2 nd 2:08)	11(2 nd 11:02)
Lead Changes	0	
Times Tied	0	
Time with Lead	00:00	19:46

Points from	MSU	ETSU
Turnovers	7	6
Paint	22	14
Second Chance	9	4
Fast Breaks	5	6
Bench	9	11

	Period by Period Scoring		
	1st	2nd	TOT
MSU	29	29	58
ETSU	32	34	66



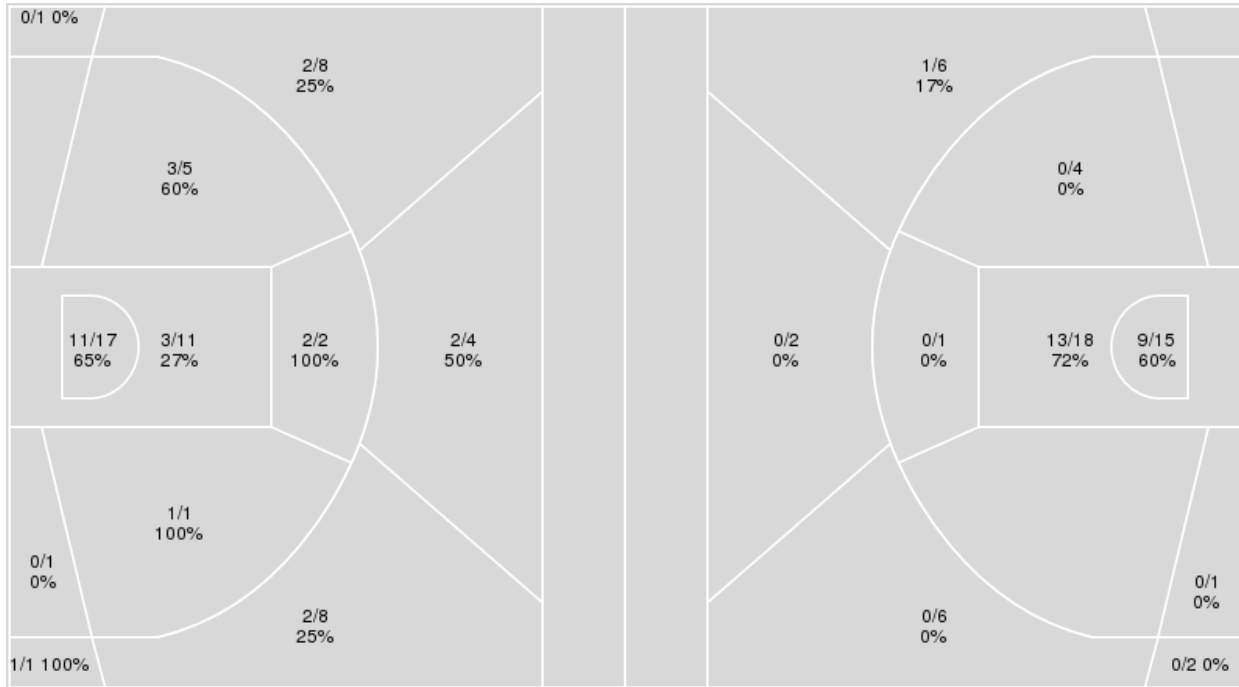
Officials: Blake Harris, Brent Dugas, Nick Meyer

{ Players => All; } FG Types => All; Results => All;

{ Players => 0, 1, 2, 4, 10, 11, 13, 14, 22, 25, 31, 32, 33, 55; } FG
 Types => All; Results => All;

ETSU

Murray St.



ETSU	M/A	%
Field Goals	27/59	46
2 Points	20/37	54
3 Points	7/22	32
Free Throws	5/7	71

Murray St.	M/A	%
Field Goals	23/55	42
2 Points	22/39	56
3 Points	1/16	6
Free Throws	11/23	48



Murray St. at ETSU

11/22/21 Community School of Naples, Naples
2021-22 Men's Basketball

Game Time: 5:30 PM
Game Duration: 1:59
Attendance: 317

Officials: Blake Harris, Brent Dugas, Nick Meyer

Murray St.

No	Name	Mins		Score		Points Diff		Points per Min		Assists		Rebounds		Steals		Turnovers	
		On	Off	On	Off	On	Off	On	Off	On	Off	On	Off	On	Off	On	Off
0	KJ Williams	31:28	08:32	51 - 51	7 - 15	0	-8	1.62	0.82	11	1	29	9	5	0	12	5
1	DaQuan Smith	15:24	24:36	31 - 28	27 - 38	3	-11	2.01	1.10	6	6	14	24	2	3	5	12
2	Trae Hannibal	22:49	17:11	44 - 39	14 - 27	5	-13	1.93	0.81	9	3	22	16	3	2	10	7
10	Tevin Brown	38:35	01:25	57 - 66	1 - 0	-9	1	1.48	0.71	12	0	35	3	5	0	16	1
13	Carter Collins	16:28	23:32	14 - 25	44 - 41	-11	3	0.85	1.87	3	9	16	22	2	3	7	10
14	Justice Hill	26:44	13:16	28 - 40	30 - 26	-12	4	1.05	2.26	6	6	27	11	3	2	13	4
31	Jordan Skipper-Brown	17:07	22:53	28 - 38	30 - 28	-10	2	1.64	1.31	8	4	13	25	4	1	7	10
32	Nicholas McMullen	08:32	31:28	7 - 15	51 - 51	-8	0	0.82	1.62	1	11	9	29	0	5	5	12
55	DJ Burns	22:53	17:07	30 - 28	28 - 38	2	-10	1.31	1.64	4	8	25	13	1	4	10	7

ETSU

No	Name	Mins		Score		Points Diff		Points per Min		Assists		Rebounds		Steals		Turnovers	
		On	Off	On	Off	On	Off	On	Off	On	Off	On	Off	On	Off	On	Off
0	Silas Adheke	20:31	19:29	20 - 24	46 - 34	-4	12	0.97	2.36	1	9	19	14	3	4	6	7
1	Mohab Yasser	16:47	23:13	27 - 19	39 - 39	8	0	1.61	1.68	5	5	16	17	4	3	4	9
2	Jordan King	31:46	08:14	55 - 50	11 - 8	5	3	1.73	1.34	8	2	27	6	5	2	11	2
4	David Sloan	30:35	09:25	50 - 45	16 - 13	5	3	1.63	1.70	8	2	22	11	5	2	9	4
14	Ty Brewer	23:11	16:49	36 - 30	30 - 28	6	2	1.55	1.78	6	4	20	13	4	3	7	6
22	Jaden Seymour	10:37	29:23	21 - 17	45 - 41	4	4	1.98	1.53	4	6	10	23	3	4	4	9
23	Vonnie Patterson	12:25	27:35	21 - 21	45 - 37	0	8	1.69	1.63	4	6	7	26	2	5	6	7
25	Ledarius Brewer	31:31	08:29	52 - 44	14 - 14	8	0	1.65	1.65	5	5	28	5	5	2	10	3
33	Charlie Weber	22:37	17:23	48 - 40	18 - 18	8	0	2.12	1.04	9	1	16	17	4	3	8	5

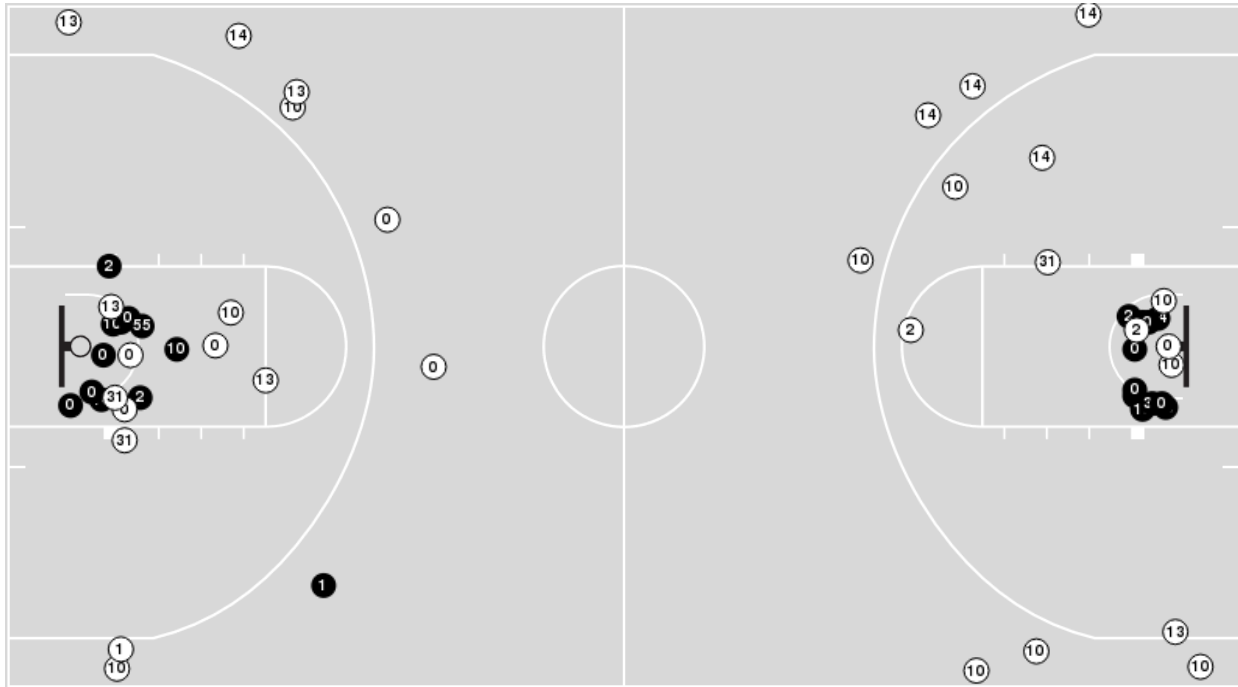


Officials: Blake Harris, Brent Dugas, Nick Meyer

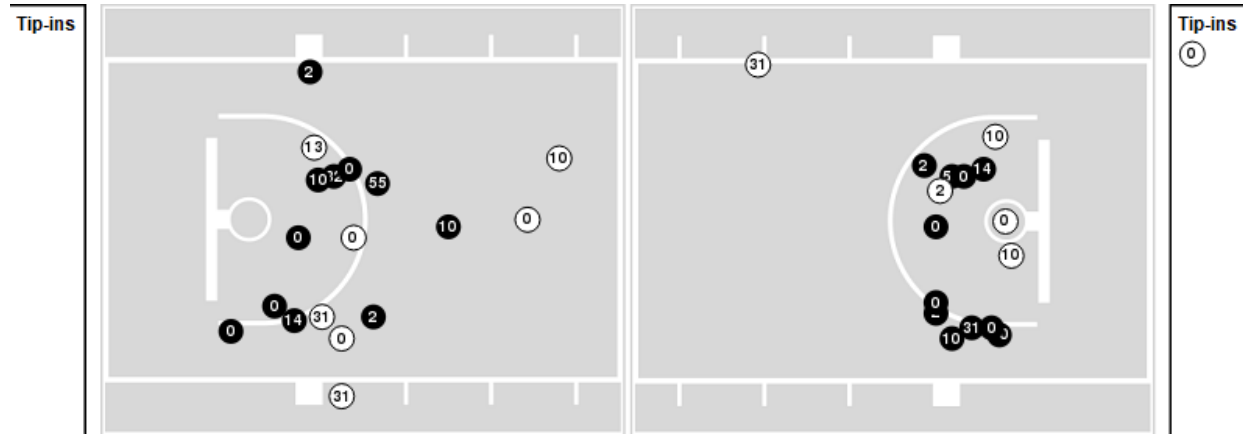
Players => 0, 1, 2, 4, 10, 11, 13, 14, 22, 25, 31, 32, 33, 55FG Types=>AllResults=>All

Murray St.

All Field Goals



Blow Up Chart



● Made ○ Missed N - Player Number

Murray St.	M/A	%
Field Goals	23/55	42
2 Points	22/39	56
3 Points	1/16	6
Free Throws	11/23	48

Murray St.	M/A	%
Points in the Paint	44 (22 / 33)	67
Fast Break Points	7 (6/9)	67
Second Chance Points	11 (8/20)	40
Effective FG%	43	

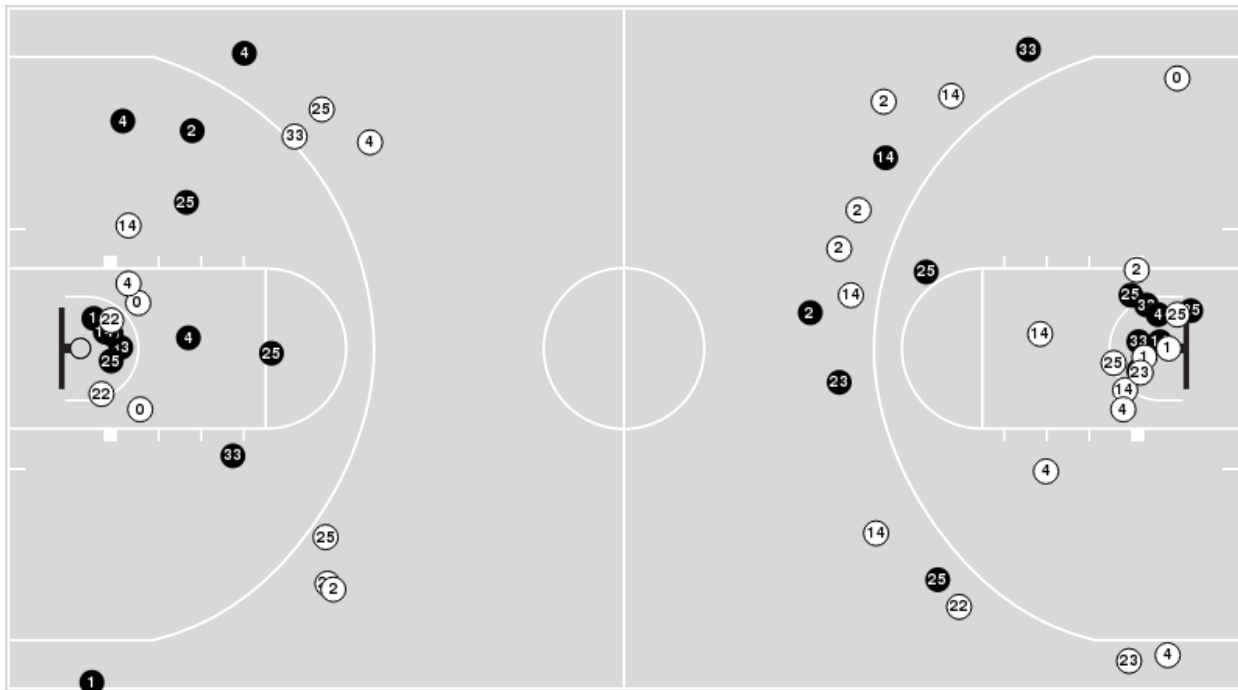


Officials: Blake Harris, Brent Dugas, Nick Meyer

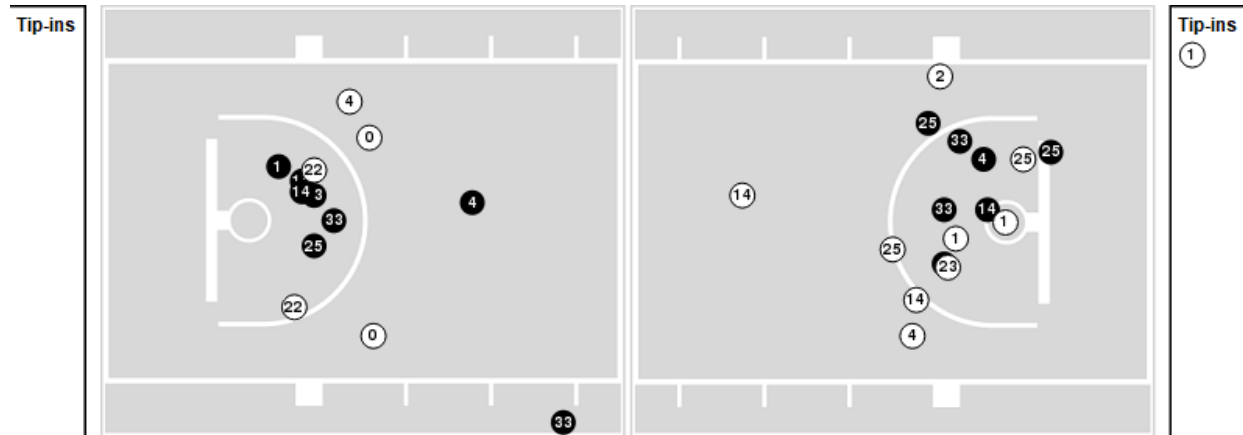
Players => AllFG Types=>AllResults=>All

ETSU

All Field Goals



Blow Up Chart



● Made ○ Missed N - Player Number

ETSU	M/A	%
Field Goals	27/59	46
2 Points	20/37	54
3 Points	7/22	32
Free Throws	5/7	71

ETSU	M/A	%
Points in the Paint	28 (14 / 28)	50
Fast Break Points	9 (5/6)	83
Second Chance Points	12 (6/10)	60
Effective FG%	52	



Murray St. at ETSU

11/22/21 Community School of Naples, Naples
2021-22 Men's Basketball

Game Time: 5:30 PM
Game Duration: 1:59
Attendance: 317

Officials: Blake Harris, Brent Dugas, Nick Meyer

Murray St.

Lineup	Quarter On	Time On	Quarter Off	Time Off	Time on Court	Score	Score Diff	Reb	Stl	Tov	Ass	PPP
0- Williams K/ 10- Brown T/ 13- Collins C/ 14- Hill J/ 55- Burns D/	1	20:00	1	15:49	04:11	4-3	1	6	1	2	1	0.5714
10- Brown T/ 13- Collins C/ 14- Hill J/ 31- Skipper-Brown J/ 32- McMullen N/	1	15:49	1	13:43	02:06	2-8	-6	1	0	2	1	0.4505
0- Williams K/ 2- Hannibal T/ 10- Brown T/ 14- Hill J/ 31- Skipper-Brown J/	1	13:43	1	13:14	00:29	0-2	-2	0	0	0	0	0.0000
0- Williams K/ 1- Smith D/ 2- Hannibal T/ 10- Brown T/ 31- Skipper-Brown J/	1	13:14	1	10:28	02:46	8-5	3	2	1	1	1	1.6000
0- Williams K/ 1- Smith D/ 2- Hannibal T/ 10- Brown T/ 55- Burns D/	1	10:28	1	07:10	03:18	8-5	3	2	0	0	2	1.3605
2- Hannibal T/ 13- Collins C/ 14- Hill J/ 32- McMullen N/ 55- Burns D/	1	07:10	1	05:45	01:25	1-0	1	3	0	1	0	0.6944
10- Brown T/ 13- Collins C/ 14- Hill J/ 32- McMullen N/ 55- Burns D/	1	05:45	1	05:28	00:17	1-0	1	0	0	0	0	2.2727
10- Brown T/ 13- Collins C/ 14- Hill J/ 31- Skipper-Brown J/ 32- McMullen N/	1	05:28	1	04:31	00:57	0-3	-3	0	0	1	0	0.0000
0- Williams K/ 10- Brown T/ 13- Collins C/ 14- Hill J/ 31- Skipper-Brown J/	1	04:31	1	01:14	03:17	2-3	-1	4	1	0	1	0.5000
0- Williams K/ 1- Smith D/ 10- Brown T/ 14- Hill J/ 31- Skipper-Brown J/	1	01:14	1	01:05	00:09	0-0	0	0	0	0	0	0.0000
0- Williams K/ 1- Smith D/ 2- Hannibal T/ 10- Brown T/ 31- Skipper-Brown J/	1	01:05	2	20:00	01:05	3-3	0	1	0	1	1	1.5000
0- Williams K/ 10- Brown T/ 13- Collins C/ 14- Hill J/ 55- Burns D/	2	20:00	2	15:45	04:15	4-8	-4	2	0	1	0	0.6667
0- Williams K/ 2- Hannibal T/ 10- Brown T/ 14- Hill J/ 55- Burns D/	2	15:45	2	15:18	00:27	0-0	0	0	0	2	0	0.0000
2- Hannibal T/ 10- Brown T/ 14- Hill J/ 32- McMullen N/ 55- Burns D/	2	15:18	2	12:39	02:39	2-4	-2	2	0	1	0	0.5155
0- Williams K/ 1- Smith D/ 2- Hannibal T/ 10- Brown T/ 31- Skipper-Brown J/	2	12:39	2	09:39	03:00	2-7	-5	3	1	1	1	0.4202
0- Williams K/ 1- Smith D/ 2- Hannibal T/ 10- Brown T/ 55- Burns D/	2	09:39	2	06:32	03:07	9-6	3	3	0	1	1	1.5306
1- Smith D/ 10- Brown T/ 14- Hill J/ 32- McMullen N/ 55- Burns D/	2	06:32	2	05:24	01:08	1-0	1	3	0	0	0	0.7576
0- Williams K/ 1- Smith D/ 10- Brown T/ 14- Hill J/ 55- Burns D/	2	05:24	2	04:33	00:51	0-2	-2	0	0	1	0	0.0000
0- Williams K/ 2- Hannibal T/ 10- Brown T/ 14- Hill J/ 55- Burns D/	2	04:33	2	03:18	01:15	0-0	0	4	0	1	0	0.0000
0- Williams K/ 2- Hannibal T/ 10- Brown T/ 14- Hill J/ 31- Skipper-Brown J/	2	03:18	2	00:00	03:18	11-7	4	2	1	1	3	1.3614



Murray St. at ETSU

11/22/21 Community School of Naples, Naples
2021-22 Men's Basketball

Game Time: 5:30 PM
Game Duration: 1:59
Attendance: 317

Officials: Blake Harris, Brent Dugas, Nick Meyer

ETSU

Lineup	Quarter On	Time On	Quarter Off	Time Off	Time on Court	Score	Score Diff	Reb	Stl	Tov	Ass	PPP
0- Adheke S/ 2- King J/ 4- Sloan D/ 14- Brewer T/ 25- Brewer L/	1	20:00	1	15:49	04:11	3-4	-1	5	0	1	0	0.4286
2- King J/ 4- Sloan D/ 14- Brewer T/ 25- Brewer L/ 33- Weber C/	1	15:49	1	13:43	02:06	8-2	6	2	1	0	1	2.0000
4- Sloan D/ 22- Seymour J/ 23- Patterson V/ 25- Brewer L/ 33- Weber C/	1	13:43	1	12:38	01:05	2-2	0	0	0	0	0	1.0000
2- King J/ 4- Sloan D/ 22- Seymour J/ 23- Patterson V/ 33- Weber C/	1	12:38	1	10:28	02:10	5-6	-1	0	0	1	2	1.2500
0- Adheke S/ 2- King J/ 14- Brewer T/ 23- Patterson V/ 25- Brewer L/	1	10:28	1	10:24	00:04	0-2	-2	0	0	1	0	0.0000
0- Adheke S/ 1- Yasser M/ 2- King J/ 14- Brewer T/ 25- Brewer L/	1	10:24	1	07:10	03:14	5-6	-1	3	0	0	0	1.2500
0- Adheke S/ 1- Yasser M/ 4- Sloan D/ 14- Brewer T/ 23- Patterson V/	1	07:10	1	05:45	01:25	0-1	-1	2	1	0	0	0.0000
1- Yasser M/ 4- Sloan D/ 14- Brewer T/ 23- Patterson V/ 33- Weber C/	1	05:45	1	04:31	01:14	3-1	2	2	1	0	1	3.0000
4- Sloan D/ 14- Brewer T/ 23- Patterson V/ 25- Brewer L/ 33- Weber C/	1	04:31	1	03:39	00:52	0-2	-2	0	0	1	0	0.0000
0- Adheke S/ 2- King J/ 14- Brewer T/ 23- Patterson V/ 25- Brewer L/	1	03:39	1	03:21	00:18	0-0	0	1	0	1	0	0.0000
0- Adheke S/ 1- Yasser M/ 2- King J/ 14- Brewer T/ 25- Brewer L/	1	03:21	1	01:14	02:07	3-0	3	2	0	1	1	1.5000
0- Adheke S/ 1- Yasser M/ 2- King J/ 22- Seymour J/ 25- Brewer L/	1	01:14	2	20:00	01:14	3-3	0	1	1	0	0	1.5957
0- Adheke S/ 2- King J/ 4- Sloan D/ 14- Brewer T/ 25- Brewer L/	2	20:00	2	17:16	02:44	2-2	0	2	0	1	0	0.6667
0- Adheke S/ 2- King J/ 4- Sloan D/ 25- Brewer L/ 33- Weber C/	2	17:16	2	16:07	01:09	2-2	0	0	0	0	0	2.0000
2- King J/ 4- Sloan D/ 14- Brewer T/ 25- Brewer L/ 33- Weber C/	2	16:07	2	15:58	00:09	2-0	2	0	0	0	0	2.2727
2- King J/ 4- Sloan D/ 14- Brewer T/ 23- Patterson V/ 33- Weber C/	2	15:58	2	15:45	00:13	2-0	2	1	0	0	1	2.0000
1- Yasser M/ 4- Sloan D/ 14- Brewer T/ 23- Patterson V/ 33- Weber C/	2	15:45	2	13:45	02:00	2-2	0	0	0	1	0	0.6667
1- Yasser M/ 4- Sloan D/ 22- Seymour J/ 25- Brewer L/ 33- Weber C/	2	13:45	2	12:07	01:38	4-0	4	2	0	0	1	1.3333
1- Yasser M/ 2- King J/ 22- Seymour J/ 25- Brewer L/ 33- Weber C/	2	12:07	2	09:39	02:28	5-2	3	4	1	1	1	1.2500
1- Yasser M/ 2- King J/ 4- Sloan D/ 14- Brewer T/ 33- Weber C/	2	09:39	2	09:11	00:28	2-2	0	0	0	0	1	2.0000
0- Adheke S/ 1- Yasser M/ 2- King J/ 4- Sloan D/ 33- Weber C/	2	09:11	2	08:12	00:59	0-2	-2	0	0	1	0	0.0000
0- Adheke S/ 2- King J/ 4- Sloan D/ 25- Brewer L/ 33- Weber C/	2	08:12	2	07:44	00:28	0-2	-2	0	0	0	0	0.0000
2- King J/ 4- Sloan D/ 14- Brewer T/ 25- Brewer L/ 33- Weber C/	2	07:44	2	05:46	01:58	4-4	0	0	1	0	1	1.0000
0- Adheke S/ 2- King J/ 4- Sloan D/ 25- Brewer L/ 33- Weber C/	2	05:46	2	05:24	00:22	0-0	0	1	0	0	0	0.0000
0- Adheke S/ 2- King J/ 4- Sloan D/ 23- Patterson V/ 25- Brewer L/	2	05:24	2	04:46	00:38	2-0	2	0	0	0	0	2.0000
0- Adheke S/ 2- King J/ 4- Sloan D/ 22- Seymour J/ 25- Brewer L/	2	04:46	2	03:18	01:28	0-0	0	1	1	0	0	0.0000
2- King J/ 4- Sloan D/ 22- Seymour J/ 25- Brewer L/ 33- Weber C/	2	03:18	2	03:08	00:10	0-3	-3	0	0	1	0	0.0000
2- King J/ 4- Sloan D/ 14- Brewer T/ 25- Brewer L/ 33- Weber C/	2	03:08	2	03:00	00:08	0-2	-2	0	0	0	0	0.0000
2- King J/ 4- Sloan D/ 23- Patterson V/ 25- Brewer L/ 33- Weber C/	2	03:00	2	00:34	02:26	5-5	0	1	0	1	0	1.2500
2- King J/ 4- Sloan D/ 22- Seymour J/ 25- Brewer L/ 33- Weber C/	2	00:34	2	00:10	00:24	2-1	1	2	0	1	0	1.5152
0- Adheke S/ 2- King J/ 4- Sloan D/ 25- Brewer L/ 33- Weber C/	2	00:10	2	00:00	00:10	0-0	0	1	0	0	0	0.0000



Murray St. at ETSU

11/22/21 Community School of Naples, Naples
2021-22 Men's Basketball

Game Time: 5:30 PM

Game Duration: 1:59

Attendance: 317

Officials: Blake Harris, Brent Dugas, Nick Meyer

Murray St.

Lineup	Time	Score	Score Diff	Pts/Min	Reb	Stl	Tov	Ass	PPP
0- Williams K/ 10- Brown T/ 13- Collins C/ 14- Hill J/ 55- Burns D/	08:26	8-11	-3	0.9486	8	1	3	1	0.6154
0- Williams K/ 1- Smith D/ 2- Hannibal T/ 10- Brown T/ 31- Skipper-Brown J/	06:51	13-15	-2	1.8978	6	2	3	3	1.1054
0- Williams K/ 1- Smith D/ 2- Hannibal T/ 10- Brown T/ 55- Burns D/	06:25	17-11	6	2.6494	5	0	1	3	1.4456
0- Williams K/ 2- Hannibal T/ 10- Brown T/ 14- Hill J/ 31- Skipper-Brown J/	03:47	11-9	2	2.9075	2	1	1	3	1.3614
0- Williams K/ 10- Brown T/ 13- Collins C/ 14- Hill J/ 31- Skipper-Brown J/	03:17	2-3	-1	0.6091	4	1	0	1	0.5000
10- Brown T/ 13- Collins C/ 14- Hill J/ 31- Skipper-Brown J/ 32- McMullen N/	03:03	2-11	-9	0.6557	1	0	3	1	0.3676
2- Hannibal T/ 10- Brown T/ 14- Hill J/ 32- McMullen N/ 55- Burns D/	02:39	2-4	-2	0.7547	2	0	1	0	0.5155
0- Williams K/ 2- Hannibal T/ 10- Brown T/ 14- Hill J/ 55- Burns D/	01:42	0-0	0	0.0000	4	0	3	0	0.0000
2- Hannibal T/ 13- Collins C/ 14- Hill J/ 32- McMullen N/ 55- Burns D/	01:25	1-0	1	0.7059	3	0	1	0	0.6944
1- Smith D/ 10- Brown T/ 14- Hill J/ 32- McMullen N/ 55- Burns D/	01:08	1-0	1	0.8824	3	0	0	0	0.7576
0- Williams K/ 1- Smith D/ 10- Brown T/ 14- Hill J/ 55- Burns D/	00:51	0-2	-2	0.0000	0	0	1	0	0.0000
10- Brown T/ 13- Collins C/ 14- Hill J/ 32- McMullen N/ 55- Burns D/	00:17	1-0	1	3.5294	0	0	0	0	2.2727
0- Williams K/ 1- Smith D/ 10- Brown T/ 14- Hill J/ 31- Skipper-Brown J/	00:09	0-0	0	0.0000	0	0	0	0	0.0000

**Murray St. at ETSU**11/22/21 Community School of Naples, Naples
2021-22 Men's Basketball

Game Time: 5:30 PM

Game Duration: 1:59

Attendance: 317

Officials: Blake Harris, Brent Dugas, Nick Meyer

ETSU

Lineup	Time	Score	Score Diff	Pts/Min	Reb	Stl	Tov	Ass	PPP
0- Adheke S/ 2- King J/ 4- Sloan D/ 14- Brewer T/ 25- Brewer L/	06:55	5-6	-1	0.7229	7	0	2	0	0.5000
0- Adheke S/ 1- Yasser M/ 2- King J/ 14- Brewer T/ 25- Brewer L/	05:21	8-6	2	1.4953	5	0	1	1	1.3333
2- King J/ 4- Sloan D/ 14- Brewer T/ 25- Brewer L/ 33- Weber C/	04:21	14-8	6	3.2184	2	2	0	2	1.5766
1- Yasser M/ 4- Sloan D/ 14- Brewer T/ 23- Patterson V/ 33- Weber C/	03:14	5-3	2	1.5464	2	1	1	1	1.2500
1- Yasser M/ 2- King J/ 22- Seymour J/ 25- Brewer L/ 33- Weber C/	02:28	5-2	3	2.0270	4	1	1	1	1.2500
2- King J/ 4- Sloan D/ 23- Patterson V/ 25- Brewer L/ 33- Weber C/	02:26	5-5	0	2.0548	1	0	1	0	1.2500
2- King J/ 4- Sloan D/ 22- Seymour J/ 23- Patterson V/ 33- Weber C/	02:10	5-6	-1	2.3077	0	0	1	2	1.2500
0- Adheke S/ 2- King J/ 4- Sloan D/ 25- Brewer L/ 33- Weber C/	02:09	2-4	-2	0.9302	2	0	0	0	1.0000
1- Yasser M/ 4- Sloan D/ 22- Seymour J/ 25- Brewer L/ 33- Weber C/	01:38	4-0	4	2.4490	2	0	0	1	1.3333
0- Adheke S/ 2- King J/ 4- Sloan D/ 22- Seymour J/ 25- Brewer L/	01:28	0-0	0	0.0000	1	1	0	0	0.0000
0- Adheke S/ 1- Yasser M/ 4- Sloan D/ 14- Brewer T/ 23- Patterson V/	01:25	0-1	-1	0.0000	2	1	0	0	0.0000
0- Adheke S/ 1- Yasser M/ 2- King J/ 22- Seymour J/ 25- Brewer L/	01:14	3-3	0	2.4324	1	1	0	0	1.5957
4- Sloan D/ 22- Seymour J/ 23- Patterson V/ 25- Brewer L/ 33- Weber C/	01:05	2-2	0	1.8462	0	0	0	0	1.0000
0- Adheke S/ 1- Yasser M/ 2- King J/ 4- Sloan D/ 33- Weber C/	00:59	0-2	-2	0.0000	0	0	1	0	0.0000
4- Sloan D/ 14- Brewer T/ 23- Patterson V/ 25- Brewer L/ 33- Weber C/	00:52	0-2	-2	0.0000	0	0	1	0	0.0000
0- Adheke S/ 2- King J/ 4- Sloan D/ 23- Patterson V/ 25- Brewer L/	00:38	2-0	2	3.1579	0	0	0	0	2.0000
2- King J/ 4- Sloan D/ 22- Seymour J/ 25- Brewer L/ 33- Weber C/	00:34	2-4	-2	3.5294	2	0	2	0	0.8621
1- Yasser M/ 2- King J/ 4- Sloan D/ 14- Brewer T/ 33- Weber C/	00:28	2-2	0	4.2857	0	0	0	1	2.0000
0- Adheke S/ 2- King J/ 14- Brewer T/ 23- Patterson V/ 25- Brewer L/	00:22	0-2	-2	0.0000	1	0	2	0	0.0000
2- King J/ 4- Sloan D/ 14- Brewer T/ 23- Patterson V/ 33- Weber C/	00:13	2-0	2	9.2308	1	0	0	1	2.0000