



**USC Upstate at ETSU**

11/18/21 Freedom Hall, Johnson City  
2021-22 Men's Basketball

Game Time: 7:00 PM  
Game Duration: 1:49  
Attendance: 3,036

Officials: Billy Dunlap, Michael Wallace, Anthony Eades

**USC Upstate - 43**

Record: 1-3

| NO.           | Name              | F | Min   | FG    |      |      | 3P |    |     | FT |    |    | Rebounds |    |   | Fouls |   | TP | AS  | TO  | ST  | Blocks |  | +/- |
|---------------|-------------------|---|-------|-------|------|------|----|----|-----|----|----|----|----------|----|---|-------|---|----|-----|-----|-----|--------|--|-----|
|               |                   |   |       | M-A   | M-A  | M-A  | OR | DR | TOT | PF | FD | BS | BA       |    |   |       |   |    |     |     |     |        |  |     |
| 34            | Josh Aldrich      | F | 23:50 | 1-5   | 1-2  | 3-4  | 4  | 2  | 6   | 4  | 2  | 6  | 0        | 0  | 0 | 1     | 0 | 0  | 1   | 0   | 2   | 12     |  |     |
| 5             | Bryson Mozone     | G | 35:51 | 4-14  | 1-8  | 0-0  | 1  | 3  | 4   | 1  | 1  | 9  | 3        | 4  | 1 | 0     | 0 | 1  | 0   | 0   | -15 |        |  |     |
| 11            | Jordan Gainey     | G | 33:51 | 2-7   | 1-2  | 0-0  | 1  | 4  | 5   | 1  | 2  | 5  | 1        | 1  | 0 | 0     | 0 | 0  | 0   | -18 |     |        |  |     |
| 12            | Dalvin White      | G | 29:02 | 3-7   | 0-3  | 0-0  | 0  | 2  | 2   | 0  | 2  | 6  | 1        | 1  | 2 | 0     | 1 | 0  | 1   | -9  |     |        |  |     |
| 24            | Nick Alves        | G | 23:52 | 1-9   | 0-2  | 3-6  | 2  | 3  | 5   | 2  | 5  | 5  | 0        | 0  | 3 | 0     | 2 | 0  | 2   | -8  |     |        |  |     |
| 3             | Mysta Goodloe     |   | 14:41 | 1-4   | 0-1  | 0-0  | 0  | 1  | 1   | 3  | 1  | 2  | 1        | 1  | 1 | 0     | 0 | 0  | 2   |     |     |        |  |     |
| 35            | Ahmir Langlais    |   | 04:00 | 1-3   | 0-0  | 0-0  | 2  | 0  | 2   | 2  | 1  | 2  | 0        | 1  | 0 | 1     | 0 | 0  | -4  |     |     |        |  |     |
| 4             | Jalen Breazeale   |   | 10:58 | 0-1   | 0-0  | 0-0  | 0  | 1  | 1   | 1  | 0  | 0  | 1        | 2  | 0 | 0     | 0 | 0  | -4  |     |     |        |  |     |
| 14            | Floyd Rideau Jr.  |   | 02:19 | 0-1   | 0-1  | 0-0  | 0  | 0  | 0   | 0  | 0  | 0  | 0        | 0  | 0 | 0     | 0 | 0  | -2  |     |     |        |  |     |
| 0             | Khydari Smith     |   | 19:00 | 4-5   | 0-0  | 0-0  | 1  | 3  | 4   | 2  | 0  | 8  | 0        | 2  | 0 | 2     | 0 | 0  | -17 |     |     |        |  |     |
| 25            | Jatayveous Watson |   | 01:43 | 0-0   | 0-0  | 0-0  | 0  | 0  | 0   | 0  | 0  | 0  | 0        | 0  | 0 | 1     | 0 | 0  | -4  |     |     |        |  |     |
| 1             | Quentin Hodge     |   | 00:53 | 0-1   | 0-0  | 0-0  | 0  | 0  | 0   | 0  | 0  | 0  | 0        | 0  | 0 | 0     | 1 | 2  |     |     |     |        |  |     |
| Team          |                   |   |       |       |      |      | 2  | 3  | 5   |    |    | 0  |          | 1  |   |       |   |    |     |     |     |        |  |     |
| <b>Totals</b> |                   |   |       | 17-57 | 3-19 | 6-10 | 13 | 22 | 35  | 16 | 14 | 43 | 7        | 13 | 8 | 4     | 6 |    |     | -13 |     |        |  |     |

| Shooting By Period  |       |       |
|---------------------|-------|-------|
| 1 <sup>st</sup> FG% | 8-28  | 28.6% |
| 3PT%                | 1-8   | 12.5% |
| FT%                 | 1-2   | 50%   |
| 2 <sup>nd</sup> FG% | 9-29  | 31.0% |
| 3PT%                | 2-11  | 18.2% |
| FT%                 | 5-8   | 62.5% |
| GM FG%              | 17-57 | 29.8% |
| 3PT%                | 3-19  | 15.8% |
| FT%                 | 6-10  | 60.0% |

Dead Ball Rebounds: 0, 0

Technical Fouls::NONE

**ETSU - 56**

Record: 1-2

| NO.           | Name             | F | Min   | FG    |      |      | 3P |    |     | FT |    |    | Rebounds |    |   | Fouls |    | TP | AS | TO | ST | Blocks |  | +/- |
|---------------|------------------|---|-------|-------|------|------|----|----|-----|----|----|----|----------|----|---|-------|----|----|----|----|----|--------|--|-----|
|               |                  |   |       | M-A   | M-A  | M-A  | OR | DR | TOT | PF | FD | BS | BA       |    |   |       |    |    |    |    |    |        |  |     |
| 0             | Silas Adheke     | F | 21:10 | 3-5   | 0-0  | 1-1  | 5  | 5  | 10  | 1  | 4  | 7  | 2        | 0  | 0 | 3     | 1  | 14 |    |    |    |        |  |     |
| 14            | Ty Brewer        | F | 28:01 | 3-10  | 0-3  | 1-1  | 3  | 2  | 5   | 4  | 3  | 7  | 1        | 3  | 2 | 0     | 0  | -2 |    |    |    |        |  |     |
| 2             | Jordan King      | G | 26:02 | 4-12  | 3-7  | 0-0  | 0  | 3  | 3   | 3  | 0  | 11 | 2        | 1  | 2 | 0     | 5  |    |    |    |    |        |  |     |
| 4             | David Sloan      | G | 31:30 | 4-13  | 3-6  | 1-2  | 1  | 5  | 6   | 2  | 2  | 12 | 3        | 3  | 2 | 0     | 17 |    |    |    |    |        |  |     |
| 25            | Ledarius Brewer  | G | 18:42 | 1-8   | 0-5  | 0-1  | 2  | 4  | 6   | 0  | 1  | 2  | 3        | 3  | 1 | 1     | 5  |    |    |    |    |        |  |     |
| 33            | Charlie Weber    |   | 22:37 | 3-5   | 0-1  | 1-2  | 6  | 3  | 9   | 2  | 2  | 7  | 2        | 0  | 0 | 1     | 12 |    |    |    |    |        |  |     |
| 23            | Vonnie Patterson |   | 26:29 | 1-8   | 0-5  | 1-2  | 4  | 5  | 9   | 2  | 2  | 3  | 3        | 3  | 0 | 1     | 12 |    |    |    |    |        |  |     |
| 1             | Mohab Yasser     |   | 17:17 | 3-6   | 0-2  | 1-1  | 1  | 2  | 3   | 0  | 2  | 7  | 0        | 2  | 1 | 0     | 0  |    |    |    |    |        |  |     |
| 22            | Jaden Seymour    |   | 08:12 | 0-1   | 0-1  | 0-0  | 0  | 1  | 1   | 0  | 0  | 0  | 0        | 2  | 1 | 0     | 2  |    |    |    |    |        |  |     |
| Team          |                  |   |       |       |      |      | 4  | 1  | 5   |    |    | 0  |          | 0  |   |       |    |    |    |    |    |        |  |     |
| <b>Totals</b> |                  |   |       | 22-68 | 6-30 | 6-10 | 26 | 31 | 57  | 14 | 16 | 56 | 16       | 17 | 9 | 6     | 4  | 13 |    |    |    |        |  |     |

| Shooting By Period  |       |       |
|---------------------|-------|-------|
| 1 <sup>st</sup> FG% | 8-34  | 23.5% |
| 3PT%                | 1-16  | 6.3%  |
| FT%                 | 5-8   | 62.5% |
| 2 <sup>nd</sup> FG% | 14-34 | 41.2% |
| 3PT%                | 5-14  | 35.7% |
| FT%                 | 1-2   | 50%   |
| GM FG%              | 22-68 | 32.4% |
| 3PT%                | 6-30  | 20.0% |
| FT%                 | 6-10  | 60.0% |

Dead Ball Rebounds: 2, 0

Technical Fouls::NONE

|                  | USCU                     | ETSU                      |
|------------------|--------------------------|---------------------------|
| Biggest lead     | 4 (1 <sup>st</sup> 5:37) | 18 (2 <sup>nd</sup> 2:10) |
| Best Scoring Run | 7 (1 <sup>st</sup> 5:37) | 13 (2 <sup>nd</sup> 2:10) |
| Lead Changes     | 8                        |                           |
| Times Tied       | 3                        |                           |
| Time with Lead   | 04:38                    | 33:56                     |

| Points from   | USCU | ETSU |
|---------------|------|------|
| Turnovers     | 14   | 7    |
| Paint         | 16   | 28   |
| Second Chance | 11   | 19   |
| Fast Breaks   | 6    | 0    |
| Bench         | 12   | 17   |

|      | Period by Period Scoring |     |     |
|------|--------------------------|-----|-----|
|      | 1st                      | 2nd | TOT |
| USCU | 18                       | 25  | 43  |
| ETSU | 22                       | 34  | 56  |



**Period 1**

**Quarter Starters:**

|             |            |             |            |             |              |
|-------------|------------|-------------|------------|-------------|--------------|
| <b>ETSU</b> | 0 Adheke S | 2 King J    | 4 Sloan D  | 14 Brewer T | 25 Brewer L  |
| <b>USCU</b> | 5 Mozone B | 11 Gainey J | 12 White D | 24 Alves N  | 34 Aldrich J |

| Game Time | ETSU  | Score      | Diff      | USCU   |
|-----------|---|------------|-----------|--|
| 20:00     | 14 BREWER T jumpball won                            |            |           | 34 ALDRICH J jumpball lost   |
| 19:45     | 14 BREWER T 2pt FG in the paint, alleyoop made (2)  | <b>2-0</b> | <b>2</b>  |  |
| 19:45     | 2 KING J assist (1)                                 |            |           |  |
| 19:25     |   |            |           | 24 ALVES N 2pt FG in the paint, driving layup missed               |
| 19:20     |   |            |           | 24 ALVES N offensive rebound (1)                                   |
| 19:19     |   |            |           | 24 ALVES N 2pt FG second chance in the paint, layup blocked        |
| 19:19     | 0 ADHEKE S block (1)                                |            |           |  |
| 19:15     | 25 BREWER L defensive rebound (1)                   |            |           |  |
| 19:11     | 25 BREWER L turnover lost ball (1)                  |            |           | 34 ALDRICH J steal (1)   |
| 18:52     | 14 BREWER T steal (1)                               |            |           | 5 MOZONE B turnover lost ball (1)                                  |
| 18:48     | 14 BREWER T turnover bad pass (1)                   |            |           | 12 WHITE D steal (1)   |
| 18:24     |   |            |           | 24 ALVES N 3pt FG from turnover, jump shot missed                  |
| 18:19     |   |            |           | 34 ALDRICH J offensive rebound (1)                                 |
| 18:19     | 14 BREWER T foul shooting (1 - 1)                   |            |           | 34 ALDRICH J foul drawn (1)  |
| 18:19     |   |            |           | 24 ALVES N substitution out  |
| 18:19     |   |            |           | 3 GOODLOE M substitution in  |
| 18:19     |   | <b>2-1</b> | <b>1</b>  | 34 ALDRICH J free throw 1 - 2 made (1)                             |
| 18:19     | 0 ADHEKE S substitution out                         |            |           |  |
| 18:19     | 33 WEBER C substitution in                          |            |           |  |
| 18:19     |   |            |           | 34 ALDRICH J free throw 2 - 2 missed                               |
| 18:17     | 33 WEBER C defensive rebound (1)                    |            |           |  |
| 18:00     | 25 BREWER L 2pt FG in the paint, jump shot missed   |            |           |  |
| 17:56     |   |            |           | 12 WHITE D defensive rebound (1)                                   |
| 17:42     |   |            |           | 5 MOZONE B 3pt FG , jump shot missed                               |
| 17:37     | 2 KING J defensive rebound (1)                      |            |           |  |
| 17:31     | 2 KING J 2pt FG outside the paint, jump shot missed |            |           |  |
| 17:28     |   |            |           | 3 GOODLOE M defensive rebound (1)                                  |
| 17:28     | jump ball situation                                 |            |           |  |
| 17:11     |   | <b>2-3</b> | <b>-1</b> | 3 GOODLOE M 2pt FG outside the paint, pull up jump shot made (2)   |
| 16:52     | 14 BREWER T 2pt FG in the paint, jump shot made (4) | <b>4-3</b> | <b>1</b>  |  |
| 16:52     | 33 WEBER C assist (1)                               |            |           |  |
| 16:52     | 14 BREWER T foul drawn (1)                          |            |           | 5 MOZONE B foul shooting (1 - 1)                                   |
| 16:52     | 25 BREWER L substitution out                        |            |           |  |
| 16:52     | 33 WEBER C substitution out                         |            |           |  |
| 16:52     | 0 ADHEKE S substitution in                          |            |           |  |
| 16:52     | 23 PATTERSON V substitution in                      |            |           |  |
| 16:52     | 14 BREWER T free throw 1 - 1 made (5)               | <b>5-3</b> | <b>2</b>  |  |
| 16:23     |   | <b>5-5</b> | <b>0</b>  | 12 WHITE D 2pt FG outside the paint, turnaround jump shot made (2) |
| 16:19     | 4 SLOAN D turnover (1)                              |            |           |  |
| 16:19     | 4 SLOAN D substitution out                          |            |           |  |
| 16:19     | 1 YASSER M substitution in                          |            |           |  |



**USC Upstate at ETSU**

11/18/21 Freedom Hall, Johnson City  
2021-22 Men's Basketball

**Officials:** Billy Dunlap, Michael Wallace, Anthony Eades

| Game Time | ETSU   | Score | Diff | USCU   |
|-----------|--|-------|------|--|
| 16:12     |  |       |      | 34 ALDRICH J 2pt FG from turnover outside the paint, jump shot missed          |
| 16:08     |  |       |      | 11 GAINEY J offensive rebound (1)  |
| 16:03     |  | 5-7   | -2   | 12 WHITE D 2pt FG from turnover second chance in the paint, jump shot made (4) |
| 15:34     | 0 ADHEKE S 2pt FG in the paint, hook shot made (2)                         | 7-7   | 0    |  |
| 15:34     | 2 KING J assist (2)  |       |      |  |
| 15:34     | 0 ADHEKE S foul drawn (1)  |       |      | 11 GAINEY J foul shooting (1 - 2)  |
| 15:34     | Timeout media  |       |      |  |
| 15:34     | 14 BREWER T substitution out   |       |      |  |
| 15:34     | 22 SEYMOUR J substitution in   |       |      |  |
| 15:34     |  |       |      | 34 ALDRICH J substitution out  |
| 15:34     |  |       |      | 35 LANGLAIS A substitution in  |
| 15:34     | 0 ADHEKE S free throw 1 - 1 made (3)                                       | 8-7   | 1    |  |
| 15:34     | 0 ADHEKE S substitution out  |       |      |  |
| 15:34     | 33 WEBER C substitution in   |       |      |  |
| 15:16     | 33 WEBER C foul personal (1 - 2)   |       |      | 35 LANGLAIS A foul drawn (1)   |
| 15:13     |  |       |      | 35 LANGLAIS A 2pt FG in the paint, layup missed                                |
| 15:07     |  |       |      | 35 LANGLAIS A offensive rebound (1)  |
| 15:07     |  | 8-9   | -1   | 35 LANGLAIS A 2pt FG second chance in the paint, layup made (2)                |
| 14:47     | 23 PATTERSON V 3pt FG , jump shot missed                                   |       |      |  |
| 14:43     |  |       |      | 11 GAINEY J defensive rebound (2)  |
| 14:29     |  |       |      | 3 GOODLOE M 2pt FG in the paint, driving layup missed                          |
| 14:25     | 22 SEYMOUR J defensive rebound (1)   |       |      |  |
| 14:14     | 1 YASSER M 3pt FG , jump shot missed                                       |       |      |  |
| 14:12     |  |       |      | defensive rebound (8)  |
| 14:12     | 2 KING J substitution out  |       |      |  |
| 14:12     | 22 SEYMOUR J substitution out  |       |      |  |
| 14:12     | 33 WEBER C substitution out  |       |      |  |
| 14:12     | 0 ADHEKE S substitution in   |       |      |  |
| 14:12     | 4 SLOAN D substitution in  |       |      |  |
| 14:12     | 14 BREWER T substitution in  |       |      |  |
| 13:49     | 1 YASSER M steal (1)   |       |      | 35 LANGLAIS A turnover lost ball (1)   |
| 13:47     | 1 YASSER M foul drawn (1)  |       |      | 3 GOODLOE M foul personal (1 - 3)  |
| 13:47     |  |       |      | 12 WHITE D substitution out  |
| 13:47     |  |       |      | 4 BREAZEALE J substitution in  |
| 13:37     | 14 BREWER T 2pt FG from turnover outside the paint, jump shot missed       |       |      |  |
| 13:31     | 1 YASSER M offensive rebound (1)   |       |      |  |
| 13:31     | 1 YASSER M 2pt FG from turnover second chance in the paint, layup made (2) | 10-9  | 1    |  |
| 13:15     |  |       |      | 11 GAINEY J 2pt FG in the paint, jump shot missed                              |
| 13:12     |  |       |      | 35 LANGLAIS A offensive rebound (2)  |
| 13:09     |  |       |      | 5 MOZONE B 3pt FG second chance, jump shot missed                              |
| 13:06     | 14 BREWER T defensive rebound (1)  |       |      |  |
| 13:02     | 23 PATTERSON V 3pt FG , jump shot missed                                   |       |      |  |
| 12:59     | 14 BREWER T offensive rebound (2)  |       |      |  |
| 12:59     | 14 BREWER T foul drawn (2)   |       |      | 35 LANGLAIS A foul personal (1 - 4)  |
| 12:59     |  |       |      | 3 GOODLOE M substitution out   |
| 12:59     |  |       |      | 24 ALVES N substitution in   |



**USC Upstate at ETSU**

11/18/21 Freedom Hall, Johnson City  
2021-22 Men's Basketball

**Game Time:** 7:00 PM  
**Game Duration:** 1:49  
**Attendance:** 3,036

**Officials:** Billy Dunlap, Michael Wallace, Anthony Eades

| Game Time | ETSU   | Score        | Diff     | USCU   |
|-----------|--|--------------|----------|--|
| 12:44     | 0 ADHEKE S 2pt FG second chance in the paint, layup blocked          |              |          |  |
| 12:44     |  |              |          | 35 LANGLAIS A block (1)  |
| 12:42     | offensive rebound (8)  |              |          |  |
| 12:42     |  |              |          | 11 GAINEY J substitution out                                       |
| 12:42     |  |              |          | 14 RIDEAU JR. F substitution in                                    |
| 12:28     | 0 ADHEKE S foul drawn (2)  |              |          | 35 LANGLAIS A foul personal (2 - 5)                                |
| 12:28     |  |              |          | 35 LANGLAIS A substitution out                                     |
| 12:28     |  |              |          | 0 SMITH K substitution in  |
| 12:22     | 4 SLOAN D 2pt FG second chance outside the paint, jump shot made (2) | <b>12-9</b>  | <b>3</b> |  |
| 12:02     |  |              |          | 4 BREAZEALE J 2pt FG outside the paint, jump shot missed           |
| 11:58     |  |              |          | 0 SMITH K offensive rebound (1)                                    |
| 11:58     |  | <b>12-11</b> | <b>1</b> | 0 SMITH K 2pt FG second chance in the paint, layup made (2)        |
| 11:41     | 1 YASSER M 2pt FG in the paint, driving layup made (4)               | <b>14-11</b> | <b>3</b> |  |
| 11:20     |  |              |          | 14 RIDEAU JR. F 3pt FG , jump shot missed                          |
| 11:16     | 1 YASSER M defensive rebound (2)                                     |              |          |  |
| 11:07     | 4 SLOAN D 2pt FG outside the paint, jump shot missed                 |              |          |  |
| 11:04     | 0 ADHEKE S offensive rebound (1)                                     |              |          |  |
| 11:03     | 14 BREWER T 3pt FG second chance, jump shot missed                   |              |          |  |
| 11:01     |  |              |          | 24 ALVES N defensive rebound (2)                                   |
| 11:01     | 23 PATTERSON V foul personal (1 - 3)                                 |              |          | 24 ALVES N foul drawn (1)  |
| 11:01     | Timeout media  |              |          |  |
| 11:01     | 0 ADHEKE S substitution out  |              |          |  |
| 11:01     | 23 PATTERSON V substitution out                                      |              |          |  |
| 11:01     | 22 SEYMOUR J substitution in   |              |          |  |
| 11:01     | 25 BREWER L substitution in  |              |          |  |
| 11:01     |  |              |          | 5 MOZONE B substitution out  |
| 11:01     |  |              |          | 14 RIDEAU JR. F substitution out                                   |
| 11:01     |  |              |          | 11 GAINEY J substitution in  |
| 11:01     |  |              |          | 34 ALDRICH J substitution in                                       |
| 10:41     |  |              |          | 34 ALDRICH J 3pt FG , jump shot missed                             |
| 10:37     | 4 SLOAN D defensive rebound (1)                                      |              |          |  |
| 10:24     | 25 BREWER L turnover lost ball (2)                                   |              |          | 24 ALVES N steal (1)   |
| 10:08     |  |              |          | 24 ALVES N 2pt FG from turnover in the paint, driving layup missed |
| 10:06     | 25 BREWER L defensive rebound (2)                                    |              |          |  |
| 09:51     | 4 SLOAN D foul drawn (1)   |              |          | 4 BREAZEALE J foul personal (1 - 6)                                |
| 09:37     | 4 SLOAN D 2pt FG in the paint, driving layup blocked                 |              |          |  |
| 09:37     |  |              |          | 0 SMITH K block (1)  |
| 09:32     |  |              |          | 11 GAINEY J defensive rebound (3)                                  |
| 09:30     |  | <b>14-13</b> | <b>1</b> | 11 GAINEY J 2pt FG fast break in the paint, driving layup made (2) |
| 09:19     | 25 BREWER L turnover travel (3)                                      |              |          |  |
| 09:19     | Timeout 30 Sec   |              |          |  |
| 09:19     | 25 BREWER L substitution out   |              |          |  |
| 09:19     | 23 PATTERSON V substitution in                                       |              |          |  |
| 09:19     |  |              |          | 4 BREAZEALE J substitution out                                     |
| 09:19     |  |              |          | 12 WHITE D substitution in   |
| 09:01     | 14 BREWER T foul drawn (3)   |              |          | 0 SMITH K foul offensive (1 - 7)                                   |
| 09:01     |  |              |          | 0 SMITH K turnover offensive (1)                                   |



**USC Upstate at ETSU**

11/18/21 Freedom Hall, Johnson City  
2021-22 Men's Basketball

**Game Time:** 7:00 PM  
**Game Duration:** 1:49  
**Attendance:** 3,036

**Officials:** Billy Dunlap, Michael Wallace, Anthony Eades

| Game Time | ETSU   | Score        | Diff      | USCU  |
|-----------|--|--------------|-----------|---|
| 09:01     | 1 YASSER M substitution out  |              |           |   |
| 09:01     | 2 KING J substitution in   |              |           |   |
| 08:43     | 23 PATTERSON V 3pt FG from turnover, jump shot missed              |              |           |   |
| 08:39     |  |              |           | 0 SMITH K defensive rebound (2)   |
| 08:20     | 2 KING J foul personal (1 - 4)                                     |              |           | 12 WHITE D foul drawn (1)   |
| 08:20     |  |              |           | 11 GAINEY J substitution out  |
| 08:20     |  |              |           | 24 ALVES N substitution out   |
| 08:20     |  |              |           | 3 GOODLOE M substitution in   |
| 08:20     |  |              |           | 5 MOZONE B substitution in  |
| 08:09     |  |              |           | 0 SMITH K 2pt FG outside the paint, jump shot missed                      |
| 08:05     | 23 PATTERSON V defensive rebound (1)                               |              |           |   |
| 07:48     | 4 SLOAN D 3pt FG , jump shot missed                                |              |           |   |
| 07:44     |  |              |           | 5 MOZONE B defensive rebound (1)  |
| 07:32     | 4 SLOAN D steal (1)  |              |           | 5 MOZONE B turnover bad pass (2)  |
| 07:27     | 4 SLOAN D 2pt FG from turnover in the paint, driving layup blocked |              |           |   |
| 07:27     |  |              |           | 0 SMITH K block (2)   |
| 07:22     |  |              |           | 12 WHITE D defensive rebound (2)  |
| 07:21     | 2 KING J foul personal (2 - 5)                                     |              |           | 12 WHITE D foul drawn (2)   |
| 07:21     | Timeout media  |              |           |   |
| 07:21     | 22 SEYMOUR J substitution out                                      |              |           |   |
| 07:21     | 0 ADHEKE S substitution in   |              |           |   |
| 07:08     |  |              |           | 3 GOODLOE M 2pt FG outside the paint, jump shot missed                    |
| 07:04     | 0 ADHEKE S defensive rebound (2)                                   |              |           |   |
| 06:56     | 2 KING J 3pt FG , jump shot missed                                 |              |           |   |
| 06:51     | 23 PATTERSON V offensive rebound (2)                               |              |           |   |
| 06:49     | 4 SLOAN D foul offensive (1 - 6)                                   |              |           | 3 GOODLOE M foul drawn (1)  |
| 06:49     | 4 SLOAN D turnover offensive (2)                                   |              |           |   |
| 06:49     | 2 KING J substitution out  |              |           |   |
| 06:49     | 1 YASSER M substitution in   |              |           |   |
| 06:25     |  | <b>14-16</b> | <b>-2</b> | 34 ALDRICH J 3pt FG from turnover, jump shot made (4)                     |
| 06:25     |  |              |           | 5 MOZONE B assist (1)   |
| 06:05     | 14 BREWER T 2pt FG outside the paint, jump shot missed             |              |           |   |
| 06:02     |  |              |           | 0 SMITH K defensive rebound (3)   |
| 05:49     | 14 BREWER T steal (2)  |              |           | 0 SMITH K turnover lost ball (2)  |
| 05:43     | 1 YASSER M turnover lost ball (1)                                  |              |           | 3 GOODLOE M steal (1)   |
| 05:37     |  | <b>14-18</b> | <b>-4</b> | 0 SMITH K 2pt FG fast break from turnover in the paint, alleyoop made (4) |
| 05:37     |  |              |           | 3 GOODLOE M assist (1)  |
| 05:23     | 4 SLOAN D foul drawn (2)   |              |           | 3 GOODLOE M foul personal (2 - 8)   |
| 05:23     | 14 BREWER T substitution out                                       |              |           |   |
| 05:23     | 22 SEYMOUR J substitution in                                       |              |           |   |
| 05:23     |  |              |           | 3 GOODLOE M substitution out  |
| 05:23     |  |              |           | 11 GAINEY J substitution in   |
| 05:23     | 4 SLOAN D 1&1 free throw 1 made (3)                                | <b>15-18</b> | <b>-3</b> |   |
| 05:23     | 4 SLOAN D 1&1 free throw 2 missed                                  |              |           |   |
| 05:21     | 0 ADHEKE S offensive rebound (3)                                   |              |           |   |
| 05:06     | 22 SEYMOUR J 3pt FG second chance, jump shot missed                |              |           |   |
| 05:02     |  |              |           | 5 MOZONE B defensive rebound (2)  |
| 04:56     |  |              |           | 5 MOZONE B turnover bad pass (3)  |



**USC Upstate at ETSU**

11/18/21 Freedom Hall, Johnson City  
2021-22 Men's Basketball

**Game Time:** 7:00 PM  
**Game Duration:** 1:49  
**Attendance:** 3,036

**Officials:** Billy Dunlap, Michael Wallace, Anthony Eades

| Game Time | ETSU  | Score        | Diff      | USCU  |
|-----------|---|--------------|-----------|---|
| 04:31     | 0 ADHEKE S 2pt FG from turnover in the paint, hook shot made (5)    | <b>17-18</b> | <b>-1</b> |   |
| 04:31     | 23 PATTERSON V assist (1)   |              |           |   |
| 04:18     |   |              |           | 5 MOZONE B 2pt FG outside the paint, jump shot missed |
| 04:14     | 4 SLOAN D defensive rebound (2)                                     |              |           |   |
| 04:11     | 23 PATTERSON V foul drawn (1)                                       |              |           | 34 ALDRICH J foul shooting (1 - 9)                    |
| 04:11     | 23 PATTERSON V free throw 1 - 2 missed                              |              |           |   |
| 04:11     | offensive dead ball rebound (1)                                     |              |           |   |
| 04:11     | 0 ADHEKE S substitution out   |              |           |   |
| 04:11     | 1 YASSER M substitution out   |              |           |   |
| 04:11     | 25 BREWER L substitution in   |              |           |   |
| 04:11     | 33 WEBER C substitution in  |              |           |   |
| 04:11     |   |              |           | 0 SMITH K substitution out                            |
| 04:11     |   |              |           | 25 WATSON J substitution in                           |
| 04:11     | 23 PATTERSON V free throw 2 - 2 made (1)                            | <b>18-18</b> | <b>0</b>  |   |
| 03:49     |   |              |           | 5 MOZONE B 3pt FG , jump shot missed                  |
| 03:46     | 4 SLOAN D defensive rebound (3)                                     |              |           |   |
| 03:43     | 25 BREWER L 3pt FG , jump shot missed                               |              |           |   |
| 03:38     | 23 PATTERSON V offensive rebound (3)                                |              |           |   |
| 03:34     | 22 SEYMOUR J turnover bad pass (1)                                  |              |           | 12 WHITE D steal (2)                                  |
| 03:29     | 22 SEYMOUR J steal (1)  |              |           | 5 MOZONE B turnover bad pass (4)                      |
| 03:20     | 4 SLOAN D 3pt FG from turnover, jump shot made (6)                  | <b>21-18</b> | <b>3</b>  |   |
| 03:20     | 23 PATTERSON V assist (2)   |              |           |   |
| 03:18     |   |              |           | Timeout 30 Sec  |
| 03:18     |   |              |           | Timeout media   |
| 03:18     | 22 SEYMOUR J substitution out                                       |              |           |   |
| 03:18     | 14 BREWER T substitution in   |              |           |   |
| 03:18     |   |              |           | 5 MOZONE B substitution out                           |
| 03:18     |   |              |           | 12 WHITE D substitution out                           |
| 03:18     |   |              |           | 3 GOODLOE M substitution in                           |
| 03:18     |   |              |           | 4 BREAZEALE J substitution in                         |
| 03:04     |   |              |           | 11 GAINEY J 2pt FG in the paint, layup missed         |
| 03:01     | 33 WEBER C defensive rebound (2)                                    |              |           |   |
| 02:41     | 25 BREWER L 3pt FG , jump shot missed                               |              |           |   |
| 02:37     | 33 WEBER C offensive rebound (3)                                    |              |           |   |
| 02:35     | 23 PATTERSON V 3pt FG second chance, jump shot missed               |              |           |   |
| 02:32     | 23 PATTERSON V offensive rebound (4)                                |              |           |   |
| 02:31     | 23 PATTERSON V 2pt FG second chance in the paint, jump shot blocked |              |           |   |
| 02:31     |   |              |           | 25 WATSON J block (1)                                 |
| 02:28     | offensive rebound (23)  |              |           |   |
| 02:28     |   |              |           | 3 GOODLOE M substitution out                          |
| 02:28     |   |              |           | 25 WATSON J substitution out                          |
| 02:28     |   |              |           | 5 MOZONE B substitution in                            |
| 02:28     |   |              |           | 24 ALVES N substitution in                            |
| 02:14     | 14 BREWER T 3pt FG second chance, jump shot missed                  |              |           |   |
| 02:10     | 33 WEBER C offensive rebound (4)                                    |              |           |   |
| 02:05     | 4 SLOAN D 2pt FG second chance in the paint, driving layup missed   |              |           |   |
| 02:01     | 25 BREWER L offensive rebound (3)                                   |              |           |   |



Official Basketball Play by Play - First Half

### USC Upstate at ETSU

11/18/21 Freedom Hall, Johnson City  
2021-22 Men's Basketball

Game Time: 7:00 PM

Game Duration: 1:49

Attendance: 3,036

Officials: Billy Dunlap, Michael Wallace, Anthony Eades

| Game Time              | ETSU   | Score        | Diff     | USCU  |
|------------------------|--|--------------|----------|---|
| 01:55                  | 33 WEBER C 2pt FG second chance in the paint, hook shot missed |              |          |   |
| 01:53                  | offensive rebound (26)   |              |          |   |
| 01:44                  | 25 BREWER L 3pt FG second chance, jump shot missed             |              |          |   |
| 01:41                  |  |              |          | 4 BREAZEALE J defensive rebound (1)             |
| 01:36                  |  |              |          | 4 BREAZEALE J turnover bad pass (1)             |
| 01:36                  |  |              |          | 4 BREAZEALE J substitution out                  |
| 01:36                  |  |              |          | 12 WHITE D substitution in                      |
| 01:11                  | 25 BREWER L 3pt FG from turnover, jump shot missed             |              |          |   |
| 01:06                  |  |              |          | 24 ALVES N defensive rebound (3)                |
| 00:56                  |  |              |          | 34 ALDRICH J 2pt FG in the paint, layup blocked |
| 00:56                  | 25 BREWER L block (1)  |              |          |   |
| 00:51                  | 23 PATTERSON V defensive rebound (5)                           |              |          |   |
| 00:38                  | 33 WEBER C foul drawn (1)                                      |              |          | 34 ALDRICH J foul shooting (2 - 10)             |
| 00:38                  | 33 WEBER C free throw 1 - 2 missed                             |              |          |   |
| 00:38                  | offensive dead ball rebound (2)                                |              |          |   |
| 00:38                  | 33 WEBER C free throw 2 - 2 made (1)                           | <b>22-18</b> | <b>4</b> |   |
| 00:10                  |  |              |          | 11 GAINEY J 3pt FG , jump shot missed           |
| 00:07                  | 33 WEBER C defensive rebound (5)                               |              |          |   |
| 00:00                  | 23 PATTERSON V 3pt FG , jump shot missed                       |              |          |   |
| 00:00                  | 33 WEBER C offensive rebound (6)                               |              |          |   |
| <b>END OF PERIOD</b>   |  |              |          |   |
| <b>ETSU 22-18 USCU</b> |  |              |          |   |



**USC Upstate at ETSU**

11/18/21 Freedom Hall, Johnson City  
2021-22 Men's Basketball

Game Time: 7:00 PM  
Game Duration: 1:49  
Attendance: 3,036

Officials: Billy Dunlap, Michael Wallace, Anthony Eades

**USC Upstate - 18**

| NO.           | Name              | F/G | Min   | FG   |     |     | Rebounds |    |     | Fouls |    | TP | AS | TO | ST | Blocks |    | +/- |
|---------------|-------------------|-----|-------|------|-----|-----|----------|----|-----|-------|----|----|----|----|----|--------|----|-----|
|               |                   |     |       | M-A  | M-A | M-A | OR       | DR | TOT | PF    | FD |    |    |    |    | BS     | BA |     |
| 34            | Josh Aldrich      | F   | 15:27 | 1-4  | 1-2 | 1-2 | 1        | 0  | 1   | 2     | 1  | 4  | 0  | 0  | 1  | 0      | 1  | -1  |
| 5             | Bryson Mozone     | G   | 16:29 | 0-4  | 0-3 | 0-0 | 0        | 2  | 2   | 1     | 0  | 0  | 1  | 4  | 0  | 0      | 0  | -6  |
| 11            | Jordan Gainey     | G   | 15:22 | 1-4  | 0-1 | 0-0 | 1        | 2  | 3   | 1     | 0  | 2  | 0  | 0  | 0  | 0      | 0  | -7  |
| 12            | Dalvin White      | G   | 13:50 | 2-2  | 0-0 | 0-0 | 0        | 2  | 2   | 0     | 2  | 4  | 0  | 0  | 2  | 0      | 0  | -2  |
| 24            | Nick Alves        | G   | 08:48 | 0-4  | 0-1 | 0-0 | 1        | 2  | 3   | 0     | 1  | 0  | 0  | 0  | 1  | 0      | 1  | -3  |
| 3             | Mysta Goodloe     |     | 09:07 | 1-3  | 0-0 | 0-0 | 0        | 1  | 1   | 2     | 1  | 2  | 1  | 0  | 1  | 0      | 0  | 6   |
| 35            | Ahmir Langlais    |     | 03:06 | 1-2  | 0-0 | 0-0 | 2        | 0  | 2   | 2     | 1  | 2  | 0  | 1  | 0  | 1      | 0  | -1  |
| 4             | Jalen Breazeale   |     | 06:10 | 0-1  | 0-0 | 0-0 | 0        | 1  | 1   | 1     | 0  | 0  | 0  | 1  | 0  | 0      | 0  | -2  |
| 14            | Floyd Rideau Jr.  |     | 01:41 | 0-1  | 0-1 | 0-0 | 0        | 0  | 0   | 0     | 0  | 0  | 0  | 0  | 0  | 0      | 0  | -2  |
| 0             | Khydarius Smith   |     | 08:17 | 2-3  | 0-0 | 0-0 | 1        | 2  | 3   | 1     | 0  | 4  | 0  | 2  | 0  | 2      | 0  | 2   |
| 25            | Jatayveous Watson |     | 01:43 | 0-0  | 0-0 | 0-0 | 0        | 0  | 0   | 0     | 0  | 0  | 0  | 0  | 0  | 1      | 0  | -4  |
| Team          |                   |     |       |      |     |     | 0        | 1  | 1   |       |    | 0  |    | 0  |    |        |    |     |
| <b>Totals</b> |                   |     |       | 8-28 | 1-8 | 1-2 | 6        | 13 | 19  | 10    | 6  | 18 | 2  | 8  | 5  | 4      | 2  | -4  |

| Shooting By Period |      |       |
|--------------------|------|-------|
| 1st FG%            | 8-28 | 28.6% |
| 3PT%               | 1-8  | 12.5% |
| FT%                | 1-2  | 50%   |
| GM FG%             | 8-28 | 28.6% |
| 3PT%               | 1-8  | 12.5% |
| FT%                | 1-2  | 50.0% |

Dead Ball Rebounds: 0, 0

Technical Fouls::NONE

**ETSU - 22**

| NO.           | Name             | F/G | Min   | FG   |      |     | Rebounds |    |     | Fouls |    | TP | AS | TO | ST | Blocks |    | +/- |
|---------------|------------------|-----|-------|------|------|-----|----------|----|-----|-------|----|----|----|----|----|--------|----|-----|
|               |                  |     |       | M-A  | M-A  | M-A | OR       | DR | TOT | PF    | FD |    |    |    |    | BS     | BA |     |
| 0             | Silas Adheke     | F   | 09:20 | 2-3  | 0-0  | 1-1 | 2        | 1  | 3   | 0     | 2  | 5  | 0  | 0  | 0  | 1      | 1  | 3   |
| 14            | Ty Brewer        | F   | 16:33 | 2-6  | 0-2  | 1-1 | 1        | 1  | 2   | 1     | 3  | 5  | 0  | 1  | 2  | 0      | 0  | -2  |
| 2             | Jordan King      | G   | 08:00 | 0-2  | 0-1  | 0-0 | 0        | 1  | 1   | 2     | 0  | 0  | 2  | 0  | 0  | 0      | 0  | -1  |
| 4             | David Sloan      | G   | 17:53 | 2-7  | 1-2  | 1-2 | 0        | 3  | 3   | 1     | 2  | 6  | 0  | 2  | 1  | 0      | 2  | 5   |
| 25            | Ledarius Brewer  | G   | 09:01 | 0-5  | 0-4  | 0-0 | 1        | 2  | 3   | 0     | 0  | 0  | 0  | 3  | 0  | 1      | 0  | 4   |
| 33            | Charlie Weber    |     | 07:00 | 0-1  | 0-0  | 1-2 | 3        | 3  | 6   | 1     | 1  | 1  | 1  | 0  | 0  | 0      | 0  | 3   |
| 23            | Vonnie Patterson |     | 15:10 | 0-6  | 0-5  | 1-2 | 3        | 2  | 5   | 1     | 1  | 1  | 2  | 0  | 0  | 0      | 1  | 5   |
| 1             | Mohab Yasser     |     | 09:56 | 2-3  | 0-1  | 0-0 | 1        | 1  | 2   | 0     | 1  | 4  | 0  | 1  | 1  | 0      | 0  | -1  |
| 22            | Jaden Seymour    |     | 07:07 | 0-1  | 0-1  | 0-0 | 0        | 1  | 1   | 0     | 0  | 0  | 0  | 1  | 1  | 0      | 0  | 4   |
| Team          |                  |     |       |      |      |     | 3        | 0  | 3   |       |    | 0  |    | 0  |    |        |    |     |
| <b>Totals</b> |                  |     |       | 8-34 | 1-16 | 5-8 | 14       | 15 | 29  | 6     | 10 | 22 | 5  | 8  | 5  | 2      | 4  | 4   |

| Shooting By Period |      |       |
|--------------------|------|-------|
| 1st FG%            | 8-34 | 23.5% |
| 3PT%               | 1-16 | 6.3%  |
| FT%                | 5-8  | 62.5% |
| GM FG%             | 8-34 | 23.5% |
| 3PT%               | 1-16 | 6.3%  |
| FT%                | 5-8  | 62.5% |

Dead Ball Rebounds: 2, 0

Technical Fouls::NONE

|                  | USCU                     | ETSU                     |
|------------------|--------------------------|--------------------------|
| Biggest lead     | 4 (1 <sup>st</sup> 5:37) | 4 (1 <sup>st</sup> 0:38) |
| Best Scoring Run | 7 (1 <sup>st</sup> 5:37) | 8 (1 <sup>st</sup> 0:38) |
| Lead Changes     | 8                        |                          |
| Times Tied       | 3                        |                          |
| Time with Lead   | 04:38                    | 13:56                    |

| Points from   | USCU | ETSU |
|---------------|------|------|
| Turnovers     | 8    | 7    |
| Paint         | 10   | 12   |
| Second Chance | 7    | 4    |
| Fast Breaks   | 4    | 0    |
| Bench         | 8    | 6    |

|      | Period by Period Scoring |     |     |
|------|--------------------------|-----|-----|
|      | 1st                      | 2nd | TOT |
| USCU | 18                       | 25  | 43  |
| ETSU | 22                       | 34  | 56  |





**USC Upstate at ETSU**

11/18/21 Freedom Hall, Johnson City  
2021-22 Men's Basketball

Game Time: 7:00 PM

Game Duration: 1:49

Attendance: 3,036

Officials: Billy Dunlap, Michael Wallace, Anthony Eades

**Period 2**

**Quarter Starters:**

|             |            |             |            |             |              |
|-------------|------------|-------------|------------|-------------|--------------|
| <b>ETSU</b> | 0 Adheke S | 2 King J    | 4 Sloan D  | 14 Brewer T | 25 Brewer L  |
| <b>USCU</b> | 5 Mozone B | 11 Gainey J | 12 White D | 24 Alves N  | 34 Aldrich J |

| Game Time | ETSU  | Score        | Diff     | USCU   |
|-----------|---|--------------|----------|--|
| 20:00     | 23 PATTERSON V substitution out                           |              |          |  |
| 20:00     | 33 WEBER C substitution out                               |              |          |  |
| 20:00     | 0 ADHEKE S substitution in                                |              |          |  |
| 20:00     | 2 KING J substitution in                                  |              |          |  |
| 19:41     | 14 BREWER T 2pt FG in the paint, layup missed             |              |          |  |
| 19:38     |   |              |          | 34 ALDRICH J defensive rebound (2)                             |
| 19:27     | 4 SLOAN D steal (2)                                       |              |          | 11 GAINNEY J turnover lost ball (1)                            |
| 19:22     | 4 SLOAN D 2pt FG from turnover in the paint, layup missed |              |          |  |
| 19:22     |   |              |          | defensive rebound (21)   |
| 19:07     |   | <b>22-21</b> | <b>1</b> | 11 GAINNEY J 3pt FG , jump shot made (5)                       |
| 19:07     |   |              |          | 5 MOZONE B assist (2)  |
| 18:39     | 2 KING J 2pt FG in the paint, jump shot missed            |              |          |  |
| 18:35     |   |              |          | 24 ALVES N defensive rebound (4)                               |
| 18:30     |   |              |          | 5 MOZONE B 3pt FG , jump shot missed                           |
| 18:27     |   |              |          | 34 ALDRICH J offensive rebound (3)                             |
| 18:24     |   |              |          | 12 WHITE D 3pt FG second chance, jump shot missed              |
| 18:21     | 0 ADHEKE S defensive rebound (4)                          |              |          |  |
| 18:21     | 0 ADHEKE S foul drawn (3)                                 |              |          | 34 ALDRICH J foul personal (3 - 1)                             |
| 18:21     |   |              |          | 34 ALDRICH J substitution out                                  |
| 18:21     |   |              |          | 35 LANGLAIS A substitution in                                  |
| 18:06     | 2 KING J 2pt FG in the paint, layup missed                |              |          |  |
| 18:03     | 0 ADHEKE S offensive rebound (5)                          |              |          |  |
| 18:01     | 4 SLOAN D 3pt FG second chance, jump shot made (9)        | <b>25-21</b> | <b>4</b> |  |
| 18:01     | 25 BREWER L assist (1)                                    |              |          |  |
| 17:37     |   |              |          | 35 LANGLAIS A 2pt FG in the paint, layup missed                |
| 17:34     | 4 SLOAN D defensive rebound (4)                           |              |          |  |
| 17:27     |   |              |          | 35 LANGLAIS A substitution out                                 |
| 17:27     |   |              |          | 0 SMITH K substitution in                                      |
| 17:20     | 25 BREWER L 2pt FG in the paint, layup made (2)           | <b>27-21</b> | <b>6</b> |  |
| 17:20     | 0 ADHEKE S assist (1)                                     |              |          |  |
| 17:20     | 25 BREWER L foul drawn (1)                                |              |          | 24 ALVES N foul shooting (1 - 2)                               |
| 17:20     | 25 BREWER L free throw 1 - 1 missed                       |              |          |  |
| 17:17     |   |              |          | 0 SMITH K defensive rebound (4)                                |
| 17:09     | 4 SLOAN D foul personal (2 - 1)                           |              |          | 11 GAINNEY J foul drawn (1)                                    |
| 17:00     | 2 KING J steal (1)  |              |          | 12 WHITE D turnover lost ball (1)                              |
| 16:55     | 14 BREWER T foul offensive (2 - 2)                        |              |          | 24 ALVES N foul drawn (2)                                      |
| 16:55     | 14 BREWER T turnover offensive (2)                        |              |          |  |
| 16:55     | 0 ADHEKE S substitution out                               |              |          |  |
| 16:55     | 33 WEBER C substitution in                                |              |          |  |
| 16:55     |   |              |          | 12 WHITE D substitution out                                    |
| 16:55     |   |              |          | 4 BREAZEALE J substitution in                                  |
| 16:38     |   |              |          | 24 ALVES N 2pt FG from turnover in the paint, jump shot missed |
| 16:35     | 4 SLOAN D defensive rebound (5)                           |              |          |  |



**USC Upstate at ETSU**

11/18/21 Freedom Hall, Johnson City  
2021-22 Men's Basketball

**Game Time:** 7:00 PM  
**Game Duration:** 1:49  
**Attendance:** 3,036

**Officials:** Billy Dunlap, Michael Wallace, Anthony Eades

| Game Time | ETSU  | Score        | Diff      | USCU   |
|-----------|---|--------------|-----------|--|
| 16:32     | 2 KING J 3pt FG , jump shot missed  |              |           |  |
| 16:27     | 33 WEBER C offensive rebound (7)  |              |           |  |
| 16:17     | 4 SLOAN D 3pt FG second chance, jump shot made (12)                           | <b>30-21</b> | <b>9</b>  |  |
| 16:17     | 25 BREWER L assist (2)  |              |           |  |
| 16:12     |   |              |           | Timeout 30 Sec   |
| 16:12     | Timeout media   |              |           |  |
| 16:12     |   |              |           | 24 ALVES N substitution out                            |
| 16:12     |   |              |           | 3 GOODLOE M substitution in                            |
| 16:02     | 2 KING J steal (2)  |              |           | 4 BREAZEALE J turnover bad pass (2)                    |
| 15:56     | 2 KING J 3pt FG from turnover, jump shot missed                               |              |           |  |
| 15:55     | offensive rebound (35)  |              |           |  |
| 15:55     | 4 SLOAN D substitution out  |              |           |  |
| 15:55     | 1 YASSER M substitution in  |              |           |  |
| 15:55     | Timeout media   |              |           |  |
| 15:46     | 25 BREWER L 2pt FG from turnover second chance in the paint, jump shot missed |              |           |  |
| 15:40     | 25 BREWER L offensive rebound (4)   |              |           |  |
| 15:39     | 1 YASSER M 3pt FG from turnover second chance, jump shot missed               |              |           |  |
| 15:36     |   |              |           | 5 MOZONE B defensive rebound (3)                       |
| 15:13     |   |              |           | 5 MOZONE B 3pt FG , jump shot missed                   |
| 15:10     | 25 BREWER L defensive rebound (5)   |              |           |  |
| 15:04     | 33 WEBER C 3pt FG , jump shot missed  |              |           |  |
| 14:58     | 14 BREWER T offensive rebound (3)   |              |           |  |
| 14:58     | 14 BREWER T 2pt FG second chance in the paint, layup made (7)                 | <b>32-21</b> | <b>11</b> |  |
| 14:43     |   | <b>32-23</b> | <b>9</b>  | 0 SMITH K 2pt FG outside the paint, jump shot made (6) |
| 14:43     |   |              |           | 11 GAINEY J assist (1)                                 |
| 14:20     | 2 KING J 2pt FG outside the paint, jump shot made (2)                         | <b>34-23</b> | <b>11</b> |  |
| 14:20     | 25 BREWER L assist (3)  |              |           |  |
| 13:57     |   |              |           | 5 MOZONE B 2pt FG outside the paint, jump shot missed  |
| 13:54     | 14 BREWER T defensive rebound (4)   |              |           |  |
| 13:46     | 2 KING J 2pt FG in the paint, driving layup missed                            |              |           |  |
| 13:42     | 33 WEBER C offensive rebound (8)  |              |           |  |
| 13:42     | 33 WEBER C 2pt FG second chance in the paint, layup made (3)                  | <b>36-23</b> | <b>13</b> |  |
| 13:35     |   | <b>36-26</b> | <b>10</b> | 5 MOZONE B 3pt FG , jump shot made (3)                 |
| 13:35     |   |              |           | 4 BREAZEALE J assist (1)                               |
| 13:14     | 1 YASSER M 2pt FG in the paint, jump shot missed                              |              |           |  |
| 13:14     | 33 WEBER C offensive rebound (9)  |              |           |  |
| 13:14     | 33 WEBER C foul drawn (2)   |              |           | 3 GOODLOE M foul personal (3 - 3)                      |
| 13:14     | 2 KING J substitution out   |              |           |  |
| 13:14     | 14 BREWER T substitution out  |              |           |  |
| 13:14     | 25 BREWER L substitution out  |              |           |  |
| 13:14     | 0 ADHEKE S substitution in  |              |           |  |
| 13:14     | 4 SLOAN D substitution in   |              |           |  |
| 13:14     | 23 PATTERSON V substitution in  |              |           |  |
| 13:14     |   |              |           | 4 BREAZEALE J substitution out                         |
| 13:14     |   |              |           | 12 WHITE D substitution in                             |
| 13:04     | 1 YASSER M 2pt FG second chance in the paint, layup made (6)                  | <b>38-26</b> | <b>12</b> |  |



**USC Upstate at ETSU**

11/18/21 Freedom Hall, Johnson City  
2021-22 Men's Basketball

**Officials:** Billy Dunlap, Michael Wallace, Anthony Eades

| Game Time | ETSU   | Score        | Diff      | USCU  |
|-----------|--|--------------|-----------|---|
| 13:04     | 0 ADHEKE S assist (2)  |              |           |   |
| 13:04     | 1 YASSER M foul drawn (2)  |              |           | 0 SMITH K foul shooting (2 - 4)   |
| 13:04     | 1 YASSER M free throw 1 - 1 made (7)                                 | <b>39-26</b> | <b>13</b> |   |
| 12:51     |  |              |           | 5 MOZONE B 3pt FG , jump shot missed  |
| 12:47     | 23 PATTERSON V defensive rebound (6)                                 |              |           |   |
| 12:46     | 23 PATTERSON V turnover bad pass (1)                                 |              |           |   |
| 12:31     |  |              |           | 3 GOODLOE M 3pt FG from turnover, jump shot missed                          |
| 12:28     | 1 YASSER M defensive rebound (3)                                     |              |           |   |
| 12:23     | 4 SLOAN D 2pt FG in the paint, jump shot missed                      |              |           |   |
| 12:20     | 4 SLOAN D offensive rebound (6)                                      |              |           |   |
| 12:04     | 4 SLOAN D 3pt FG second chance, jump shot missed                     |              |           |   |
| 12:00     | 0 ADHEKE S offensive rebound (6)                                     |              |           |   |
| 11:42     | 23 PATTERSON V 2pt FG second chance in the paint, jump shot made (3) | <b>41-26</b> | <b>15</b> |   |
| 11:35     |  | <b>41-28</b> | <b>13</b> | 0 SMITH K 2pt FG in the paint, hook shot made (8)                           |
| 11:35     |  |              |           | 12 WHITE D assist (1)   |
| 11:16     | 1 YASSER M turnover travel (2)                                       |              |           |   |
| 11:16     | Timeout media  |              |           |   |
| 11:16     | 0 ADHEKE S substitution out  |              |           |   |
| 11:16     | 4 SLOAN D substitution out   |              |           |   |
| 11:16     | 2 KING J substitution in   |              |           |   |
| 11:16     | 22 SEYMOUR J substitution in   |              |           |   |
| 11:16     |  |              |           | 0 SMITH K substitution out  |
| 11:16     |  |              |           | 3 GOODLOE M substitution out  |
| 11:16     |  |              |           | 24 ALVES N substitution in  |
| 11:16     |  |              |           | 34 ALDRICH J substitution in  |
| 10:59     |  | <b>41-30</b> | <b>11</b> | 12 WHITE D 2pt FG from turnover in the paint, driving layup made (6)        |
| 10:35     | 22 SEYMOUR J turnover bad pass (2)                                   |              |           | 24 ALVES N steal (2)  |
| 10:17     |  |              |           | 12 WHITE D 3pt FG from turnover, jump shot missed                           |
| 10:12     |  |              |           | 34 ALDRICH J offensive rebound (4)  |
| 10:11     |  |              |           | 34 ALDRICH J 2pt FG from turnover second chance in the paint, layup blocked |
| 10:11     | 33 WEBER C block (1)   |              |           |   |
| 10:11     |  |              |           | offensive rebound (27)  |
| 10:11     | 22 SEYMOUR J substitution out  |              |           |   |
| 10:11     | 14 BREWER T substitution in  |              |           |   |
| 10:03     |  |              |           | 11 GAINEY J 2pt FG from turnover second chance in the paint, layup missed   |
| 10:00     | 23 PATTERSON V defensive rebound (7)                                 |              |           |   |
| 09:41     | 14 BREWER T 3pt FG , jump shot missed                                |              |           |   |
| 09:38     | 23 PATTERSON V offensive rebound (8)                                 |              |           |   |
| 09:37     | 23 PATTERSON V foul drawn (2)  |              |           | 24 ALVES N foul personal (2 - 5)  |
| 09:33     | 23 PATTERSON V 2pt FG second chance in the paint, layup missed       |              |           |   |
| 09:30     |  |              |           | 34 ALDRICH J defensive rebound (5)  |
| 09:21     |  | <b>41-32</b> | <b>9</b>  | 5 MOZONE B 2pt FG outside the paint, jump shot made (5)                     |
| 09:00     | 33 WEBER C 2pt FG in the paint, dunk, made (5)                       | <b>43-32</b> | <b>11</b> |   |
| 09:00     | 14 BREWER T assist (1)   |              |           |   |
| 08:34     |  |              |           | 12 WHITE D 2pt FG in the paint, layup blocked                               |
| 08:34     | 1 YASSER M block (1)   |              |           |   |



**USC Upstate at ETSU**

11/18/21 Freedom Hall, Johnson City  
2021-22 Men's Basketball

**Game Time:** 7:00 PM  
**Game Duration:** 1:49  
**Attendance:** 3,036

**Officials:** Billy Dunlap, Michael Wallace, Anthony Eades

| Game Time | ETSU  | Score        | Diff      | USCU  |
|-----------|---|--------------|-----------|---|
| 08:34     |   |              |           | 34 ALDRICH J offensive rebound (6)                                    |
| 08:34     | 33 WEBER C foul shooting (2 - 3)                            |              |           | 34 ALDRICH J foul drawn (2)   |
| 08:34     |   | <b>43-33</b> | <b>10</b> | 34 ALDRICH J free throw 1 - 2 made (5)                                |
| 08:34     | 1 YASSER M substitution out                                 |              |           |   |
| 08:34     | 25 BREWER L substitution in                                 |              |           |   |
| 08:34     |   | <b>43-34</b> | <b>9</b>  | 34 ALDRICH J free throw 2 - 2 made (6)                                |
| 08:34     |   |              |           | 5 MOZONE B substitution out   |
| 08:34     |   |              |           | 11 GAINEY J substitution out  |
| 08:34     |   |              |           | 3 GOODLOE M substitution in   |
| 08:34     |   |              |           | 14 RIDEAU JR. F substitution in                                       |
| 08:14     | 23 PATTERSON V turnover bad pass (2)                        |              |           | 24 ALVES N steal (3)  |
| 08:06     | 25 BREWER L steal (1)                                       |              |           | 3 GOODLOE M turnover bad pass (1)                                     |
| 07:56     | 2 KING J turnover bad pass (1)                              |              |           |   |
| 07:56     | Timeout media   |              |           |   |
| 07:56     |   |              |           | 3 GOODLOE M substitution out  |
| 07:56     |   |              |           | 14 RIDEAU JR. F substitution out                                      |
| 07:56     |   |              |           | 5 MOZONE B substitution in  |
| 07:56     |   |              |           | 11 GAINEY J substitution in   |
| 07:34     | 14 BREWER T foul personal (3 - 4)                           |              |           | 11 GAINEY J foul drawn (2)  |
| 07:34     | 23 PATTERSON V substitution out                             |              |           |   |
| 07:34     | 4 SLOAN D substitution in                                   |              |           |   |
| 07:19     |   | <b>43-36</b> | <b>7</b>  | 5 MOZONE B 2pt FG from turnover outside the paint, jump shot made (7) |
| 07:01     | 25 BREWER L 3pt FG , jump shot missed                       |              |           |   |
| 06:57     |   |              |           | defensive rebound (30)  |
| 06:57     | 33 WEBER C substitution out                                 |              |           |   |
| 06:57     | 0 ADHEKE S substitution in                                  |              |           |   |
| 06:39     |   |              |           | 24 ALVES N 3pt FG , jump shot missed                                  |
| 06:35     | 25 BREWER L defensive rebound (6)                           |              |           |   |
| 06:21     | 4 SLOAN D 3pt FG , jump shot missed                         |              |           |   |
| 06:18     | 14 BREWER T offensive rebound (5)                           |              |           |   |
| 06:17     | 14 BREWER T 2pt FG second chance in the paint, layup missed |              |           |   |
| 06:14     |   |              |           | 11 GAINEY J defensive rebound (4)                                     |
| 06:10     | 2 KING J foul shooting (3 - 5)                              |              |           | 24 ALVES N foul drawn (3)   |
| 06:10     |   | <b>43-37</b> | <b>6</b>  | 24 ALVES N free throw 1 - 2 made (1)                                  |
| 06:10     |   |              |           | 24 ALVES N free throw 2 - 2 missed                                    |
| 06:08     |   |              |           | 5 MOZONE B offensive rebound (4)                                      |
| 06:07     | 0 ADHEKE S foul shooting (1 - 6)                            |              |           | 24 ALVES N foul drawn (4)   |
| 06:07     |   | <b>43-38</b> | <b>5</b>  | 24 ALVES N free throw 1 - 2 made (2)                                  |
| 06:07     |   |              |           | 24 ALVES N free throw 2 - 2 missed                                    |
| 06:06     | 2 KING J defensive rebound (2)                              |              |           |   |
| 05:41     | 0 ADHEKE S 2pt FG in the paint, layup missed                |              |           |   |
| 05:39     | 0 ADHEKE S offensive rebound (7)                            |              |           |   |
| 05:39     | 0 ADHEKE S foul drawn (4)                                   |              |           | 34 ALDRICH J foul personal (4 - 6)                                    |
| 05:39     | 0 ADHEKE S substitution out                                 |              |           |   |
| 05:39     | 25 BREWER L substitution out                                |              |           |   |
| 05:39     | 23 PATTERSON V substitution in                              |              |           |   |
| 05:39     | 33 WEBER C substitution in                                  |              |           |   |
| 05:39     |   |              |           | 34 ALDRICH J substitution out   |



**USC Upstate at ETSU**

11/18/21 Freedom Hall, Johnson City  
2021-22 Men's Basketball

**Game Time:** 7:00 PM  
**Game Duration:** 1:49  
**Attendance:** 3,036

**Officials:** Billy Dunlap, Michael Wallace, Anthony Eades

| Game Time | ETSU   | Score        | Diff      | USCU   |
|-----------|--|--------------|-----------|--|
| 05:39     |  |              |           | 0 SMITH K substitution in                                      |
| 05:29     | 14 BREWER T foul offensive (4 - 7)             |              |           | 5 MOZONE B foul drawn (1)                                      |
| 05:29     | 14 BREWER T turnover offensive (3)             |              |           |  |
| 05:29     | 14 BREWER T substitution out                   |              |           |  |
| 05:29     | 0 ADHEKE S substitution in                     |              |           |  |
| 05:00     |  |              |           | 5 MOZONE B 2pt FG from turnover in the paint, jump shot missed |
| 04:57     | 23 PATTERSON V defensive rebound (9)           |              |           |  |
| 04:51     | 2 KING J 3pt FG , jump shot made (5)           | <b>46-38</b> | <b>8</b>  |  |
| 04:51     | 4 SLOAN D assist (1)                           |              |           |  |
| 04:27     |  |              |           | 11 GAINEY J 2pt FG outside the paint, jump shot missed         |
| 04:24     | 0 ADHEKE S defensive rebound (8)               |              |           |  |
| 04:06     | 0 ADHEKE S 2pt FG in the paint, layup made (7) | <b>48-38</b> | <b>10</b> |  |
| 04:06     | 33 WEBER C assist (2)                          |              |           |  |
| 04:00     |  |              |           | Timeout 30 Sec   |
| 04:00     | Timeout media                                  |              |           |  |
| 03:55     |  |              |           | 24 ALVES N 2pt FG in the paint, layup blocked                  |
| 03:55     | 0 ADHEKE S block (2)                           |              |           |  |
| 03:51     | 2 KING J defensive rebound (3)                 |              |           |  |
| 03:35     | 33 WEBER C 2pt FG in the paint, layup made (7) | <b>50-38</b> | <b>12</b> |  |
| 03:35     | 4 SLOAN D assist (2)                           |              |           |  |
| 03:21     |  |              |           | 5 MOZONE B 3pt FG , jump shot missed                           |
| 03:19     | defensive rebound (55)                         |              |           |  |
| 02:54     | 2 KING J 3pt FG , jump shot made (8)           | <b>53-38</b> | <b>15</b> |  |
| 02:54     | 23 PATTERSON V assist (3)                      |              |           |  |
| 02:37     |  |              |           | 12 WHITE D 3pt FG , jump shot missed                           |
| 02:33     | 0 ADHEKE S defensive rebound (9)               |              |           |  |
| 02:10     | 2 KING J 3pt FG , jump shot made (11)          | <b>56-38</b> | <b>18</b> |  |
| 02:10     | 4 SLOAN D assist (3)                           |              |           |  |
| 01:49     |  | <b>56-40</b> | <b>16</b> | 5 MOZONE B 2pt FG outside the paint, jump shot made (9)        |
| 01:20     | 2 KING J 3pt FG , jump shot missed             |              |           |  |
| 01:17     |  |              |           | 11 GAINEY J defensive rebound (5)                              |
| 01:08     |  |              |           | 24 ALVES N 2pt FG outside the paint, jump shot missed          |
| 01:07     |  |              |           | 24 ALVES N offensive rebound (5)                               |
| 01:07     | 23 PATTERSON V foul shooting (2 - 8)           |              |           | 24 ALVES N foul drawn (5)                                      |
| 01:07     |  | <b>56-41</b> | <b>15</b> | 24 ALVES N free throw 1 - 2 made (3)                           |
| 01:07     |  |              |           | 0 SMITH K substitution out                                     |
| 01:07     |  |              |           | 12 WHITE D substitution out                                    |
| 01:07     |  |              |           | 4 BREAZEALE J substitution in                                  |
| 01:07     |  |              |           | 34 ALDRICH J substitution in                                   |
| 01:07     |  |              |           | 24 ALVES N free throw 2 - 2 missed                             |
| 01:06     | 0 ADHEKE S defensive rebound (10)              |              |           |  |
| 00:53     | 23 PATTERSON V turnover travel (3)             |              |           |  |
| 00:53     | Timeout 30 Sec                                 |              |           |  |
| 00:53     |  |              |           | 11 GAINEY J substitution out                                   |
| 00:53     |  |              |           | 1 HODGE Q substitution in                                      |
| 00:25     |  |              |           | 1 HODGE Q 2pt FG from turnover in the paint, layup blocked     |
| 00:25     | 0 ADHEKE S block (3)                           |              |           |  |
| 00:24     |  |              |           | offensive rebound (35)   |



Official Basketball Play by Play - Second Half

### USC Upstate at ETSU

11/18/21 Freedom Hall, Johnson City  
2021-22 Men's Basketball

Game Time: 7:00 PM

Game Duration: 1:49

Attendance: 3,036

Officials: Billy Dunlap, Michael Wallace, Anthony Eades

| Game Time       | ETSU                            | Score | Diff | USCU  |
|-----------------|---------------------------------|-------|------|---|
| 00:21           |                                 |       |      | turnover shot clock (13)  |
| 00:07           | 4 SLOAN D turnover bad pass (3) |       |      | 5 MOZONE B steal (1)  |
| 00:02           |                                 | 56-43 | 13   | 24 ALVES N 2pt FG fast break from turnover in the paint, dunk, made (5) |
| 00:02           |                                 |       |      | 5 MOZONE B assist (3)   |
| END OF GAME     |                                 |       |      |   |
| ETSU 56-43 USCU |                                 |       |      |   |



**USC Upstate at ETSU**

11/18/21 Freedom Hall, Johnson City  
2021-22 Men's Basketball

Game Time: 7:00 PM  
Game Duration: 1:49  
Attendance: 3,036

Officials: Billy Dunlap, Michael Wallace, Anthony Eades

**USC Upstate - 25**

| NO.           | Name             | Min     | FG   |      |     | Rebounds |    |     | Fouls |    | TP | AS | TO | ST | Blocks |    | +/- |
|---------------|------------------|---------|------|------|-----|----------|----|-----|-------|----|----|----|----|----|--------|----|-----|
|               |                  |         | M-A  | 3P   | FT  | OR       | DR | TOT | PF    | FD |    |    |    |    | BS     | BA |     |
| 34            | Josh Aldrich     | F 08:23 | 0-1  | 0-0  | 2-2 | 3        | 2  | 5   | 2     | 1  | 2  | 0  | 0  | 0  | 0      | 1  | 13  |
| 5             | Bryson Mozone    | G 19:22 | 4-10 | 1-5  | 0-0 | 1        | 1  | 2   | 0     | 1  | 9  | 2  | 0  | 1  | 0      | 0  | -9  |
| 11            | Jordan Gainey    | G 18:29 | 1-3  | 1-1  | 0-0 | 0        | 2  | 2   | 0     | 2  | 3  | 1  | 1  | 0  | 0      | 0  | -11 |
| 12            | Dalvin White     | G 15:12 | 1-5  | 0-3  | 0-0 | 0        | 0  | 0   | 0     | 0  | 2  | 1  | 1  | 0  | 0      | 1  | -7  |
| 24            | Nick Alves       | G 15:04 | 1-5  | 0-1  | 3-6 | 1        | 1  | 2   | 2     | 4  | 5  | 0  | 0  | 2  | 0      | 1  | -5  |
| 35            | Ahmir Langlais   | 00:54   | 0-1  | 0-0  | 0-0 | 0        | 0  | 0   | 0     | 0  | 0  | 0  | 0  | 0  | 0      | 0  | -3  |
| 0             | Khydari Smith    | 10:43   | 2-2  | 0-0  | 0-0 | 0        | 1  | 1   | 1     | 0  | 4  | 0  | 0  | 0  | 0      | 0  | -19 |
| 4             | Jalen Breazeale  | 04:48   | 0-0  | 0-0  | 0-0 | 0        | 0  | 0   | 0     | 0  | 0  | 1  | 1  | 0  | 0      | 0  | -2  |
| 3             | Mysta Goodloe    | 05:34   | 0-1  | 0-1  | 0-0 | 0        | 0  | 0   | 1     | 0  | 0  | 0  | 1  | 0  | 0      | 0  | -4  |
| 14            | Floyd Rideau Jr. | 00:38   | 0-0  | 0-0  | 0-0 | 0        | 0  | 0   | 0     | 0  | 0  | 0  | 0  | 0  | 0      | 0  | 0   |
| 1             | Quentin Hodge    | 00:53   | 0-1  | 0-0  | 0-0 | 0        | 0  | 0   | 0     | 0  | 0  | 0  | 0  | 0  | 0      | 1  | 2   |
| Team          |                  |         |      |      |     | 2        | 2  | 4   |       |    | 0  |    | 1  |    |        |    |     |
| <b>Totals</b> |                  |         | 9-29 | 2-11 | 5-8 | 7        | 9  | 16  | 6     | 8  | 25 | 5  | 5  | 3  | 0      | 4  | -9  |

| Shooting By Period |      |       |
|--------------------|------|-------|
| 2nd FG%            | 9-29 | 31.0% |
| 3PT%               | 2-11 | 18.2% |
| FT%                | 5-8  | 62.5% |
| GM FG%             | 9-29 | 31.0% |
| 3PT%               | 2-11 | 18.2% |
| FT%                | 5-8  | 62.5% |

Dead Ball Rebounds: 0, 0

Technical Fouls: NONE

**ETSU - 34**

| NO.           | Name             | Min     | FG    |      |     | Rebounds |    |     | Fouls |    | TP | AS | TO | ST | Blocks |    | +/- |
|---------------|------------------|---------|-------|------|-----|----------|----|-----|-------|----|----|----|----|----|--------|----|-----|
|               |                  |         | M-A   | 3P   | FT  | OR       | DR | TOT | PF    | FD |    |    |    |    | BS     | BA |     |
| 0             | Silas Adheke     | F 11:50 | 1-2   | 0-0  | 0-0 | 3        | 4  | 7   | 1     | 2  | 2  | 2  | 0  | 0  | 2      | 0  | 11  |
| 14            | Ty Brewer        | F 11:28 | 1-4   | 0-1  | 0-0 | 2        | 1  | 3   | 3     | 0  | 2  | 1  | 2  | 0  | 0      | 0  | 0   |
| 2             | Jordan King      | G 18:02 | 4-10  | 3-6  | 0-0 | 0        | 2  | 2   | 1     | 0  | 11 | 0  | 1  | 2  | 0      | 0  | 6   |
| 4             | David Sloan      | G 13:37 | 2-6   | 2-4  | 0-0 | 1        | 2  | 3   | 1     | 0  | 6  | 3  | 1  | 1  | 0      | 0  | 12  |
| 25            | Ledarius Brewer  | G 09:41 | 1-3   | 0-1  | 0-1 | 1        | 2  | 3   | 0     | 1  | 2  | 3  | 0  | 1  | 0      | 0  | 1   |
| 33            | Charlie Weber    | 15:37   | 3-4   | 0-1  | 0-0 | 3        | 0  | 3   | 1     | 1  | 6  | 1  | 0  | 0  | 1      | 0  | 9   |
| 1             | Mohab Yasser     | 07:21   | 1-3   | 0-1  | 1-1 | 0        | 1  | 1   | 0     | 1  | 3  | 0  | 1  | 0  | 1      | 0  | 1   |
| 23            | Vonnie Patterson | 11:19   | 1-2   | 0-0  | 0-0 | 1        | 3  | 4   | 1     | 1  | 2  | 1  | 3  | 0  | 0      | 0  | 7   |
| 22            | Jaden Seymour    | 01:05   | 0-0   | 0-0  | 0-0 | 0        | 0  | 0   | 0     | 0  | 0  | 0  | 1  | 0  | 0      | 0  | -2  |
| Team          |                  |         |       |      |     | 1        | 1  | 2   |       |    | 0  |    | 0  |    |        |    |     |
| <b>Totals</b> |                  |         | 14-34 | 5-14 | 1-2 | 12       | 16 | 28  | 8     | 6  | 34 | 11 | 9  | 4  | 4      | 0  | 9   |

| Shooting By Period |       |       |
|--------------------|-------|-------|
| 2nd FG%            | 14-34 | 41.2% |
| 3PT%               | 5-14  | 35.7% |
| FT%                | 1-2   | 50%   |
| GM FG%             | 14-34 | 41.2% |
| 3PT%               | 5-14  | 35.7% |
| FT%                | 1-2   | 50.0% |

Dead Ball Rebounds: 0, 0

Technical Fouls: NONE

|                  | USCU                      | ETSU                      |
|------------------|---------------------------|---------------------------|
| Biggest lead     | 0 (1 <sup>st</sup> 20:00) | 18 (2 <sup>nd</sup> 2:10) |
| Best Scoring Run | 6(2 <sup>nd</sup> 9:21)   | 13(2 <sup>nd</sup> 2:10)  |
| Lead Changes     | 0                         |                           |
| Times Tied       | 0                         |                           |
| Time with Lead   | 00:00                     | 19:41                     |

| Points from   | USCU | ETSU |
|---------------|------|------|
| Turnovers     | 6    | 0    |
| Paint         | 6    | 16   |
| Second Chance | 4    | 15   |
| Fast Breaks   | 2    | 0    |
| Bench         | 4    | 11   |

|      | Period by Period Scoring |     |     |
|------|--------------------------|-----|-----|
|      | 1st                      | 2nd | TOT |
| USCU | 18                       | 25  | 43  |
| ETSU | 22                       | 34  | 56  |



**USC Upstate at ETSU**

11/18/21 Freedom Hall, Johnson City  
2021-22 Men's Basketball

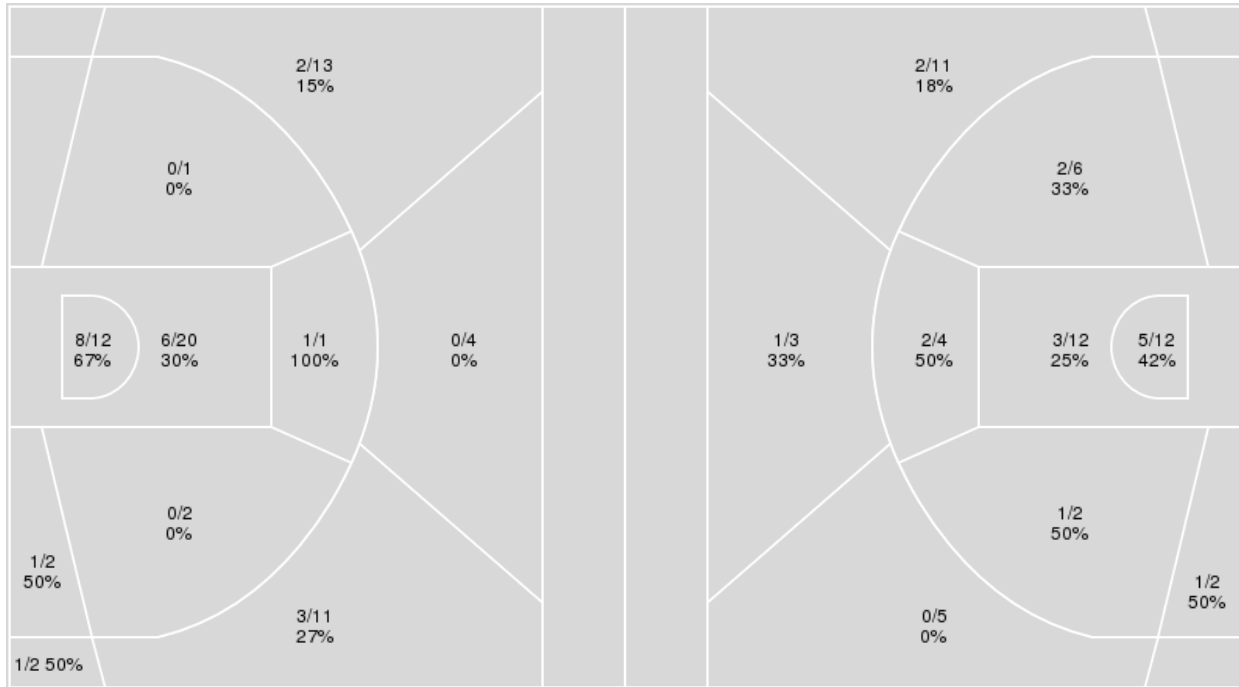
Officials: Billy Dunlap, Michael Wallace, Anthony Eades

{ Players => 0, 1, 2, 4, 5, 11, 14, 15, 20, 21, 22, 23, 24, 25, 33; } FG  
Types => All; Results => All;

{ Players => All; } FG Types => All; Results => All;

**ETSU**

**USC Upstate**



| ETSU        | M/A   | %  |
|-------------|-------|----|
| Field Goals | 22/68 | 32 |
| 2 Points    | 16/38 | 42 |
| 3 Points    | 6/30  | 20 |
| Free Throws | 6/10  | 60 |

| USC Upstate | M/A   | %  |
|-------------|-------|----|
| Field Goals | 17/57 | 30 |
| 2 Points    | 14/38 | 37 |
| 3 Points    | 3/19  | 16 |
| Free Throws | 6/10  | 60 |





**USC Upstate at ETSU**

11/18/21 Freedom Hall, Johnson City  
2021-22 Men's Basketball

**Game Time:** 7:00 PM  
**Game Duration:** 1:49  
**Attendance:** 3,036

**Officials:** Billy Dunlap, Michael Wallace, Anthony Eades

**USC Upstate**

| No | Name              | Mins  |       | Score   |         | Points Diff |     | Points per Min |      | Assists |     | Rebounds |     | Steals |     | Turnovers |     |
|----|-------------------|-------|-------|---------|---------|-------------|-----|----------------|------|---------|-----|----------|-----|--------|-----|-----------|-----|
|    |                   | On    | Off   | On      | Off     | On          | Off | On             | Off  | On      | Off | On       | Off | On     | Off | On        | Off |
| 0  | Khydarius Smith   | 19:00 | 21:00 | 19 - 36 | 24 - 20 | -17         | 4   | 1.00           | 1.14 | 5       | 2   | 12       | 23  | 2      | 6   | 6         | 7   |
| 1  | Quentin Hodge     | 00:53 | 39:07 | 2 - 0   | 41 - 56 | 2           | -15 | 2.26           | 1.05 | 1       | 6   | 1        | 34  | 1      | 7   | 1         | 12  |
| 3  | Mysta Goodloe     | 14:41 | 25:19 | 21 - 19 | 22 - 37 | 2           | -15 | 1.43           | 0.87 | 5       | 2   | 11       | 24  | 2      | 6   | 5         | 8   |
| 4  | Jalen Breazeale   | 10:58 | 29:02 | 11 - 15 | 32 - 41 | -4          | -9  | 1.00           | 1.10 | 3       | 4   | 7        | 28  | 2      | 6   | 3         | 10  |
| 5  | Bryson Mozzone    | 35:51 | 04:09 | 41 - 56 | 2 - 0   | -15         | 2   | 1.14           | 0.48 | 7       | 0   | 33       | 2   | 6      | 2   | 11        | 2   |
| 11 | Jordan Gainey     | 33:51 | 06:09 | 34 - 52 | 9 - 4   | -18         | 5   | 1.00           | 1.46 | 4       | 3   | 29       | 6   | 5      | 3   | 9         | 4   |
| 12 | Dalvin White      | 29:02 | 10:58 | 32 - 41 | 11 - 15 | -9          | -4  | 1.10           | 1.00 | 4       | 3   | 28       | 7   | 6      | 2   | 10        | 3   |
| 14 | Floyd Rideau Jr.  | 02:19 | 37:41 | 2 - 4   | 41 - 52 | -2          | -11 | 0.86           | 1.09 | 0       | 7   | 2        | 33  | 1      | 7   | 1         | 12  |
| 24 | Nick Alves        | 23:52 | 16:08 | 22 - 30 | 21 - 26 | -8          | -5  | 0.92           | 1.30 | 2       | 5   | 23       | 12  | 6      | 2   | 7         | 6   |
| 25 | Jatayveous Watson | 01:43 | 38:17 | 0 - 4   | 43 - 52 | -4          | -9  | 0.00           | 1.12 | 0       | 7   | 0        | 35  | 1      | 7   | 1         | 12  |
| 34 | Josh Aldrich      | 23:50 | 16:10 | 29 - 17 | 14 - 39 | 12          | -25 | 1.22           | 0.87 | 4       | 3   | 25       | 10  | 8      | 0   | 10        | 3   |
| 35 | Ahmir Langlais    | 04:00 | 36:00 | 2 - 6   | 41 - 50 | -4          | -9  | 0.50           | 1.14 | 0       | 7   | 4        | 31  | 0      | 8   | 1         | 12  |

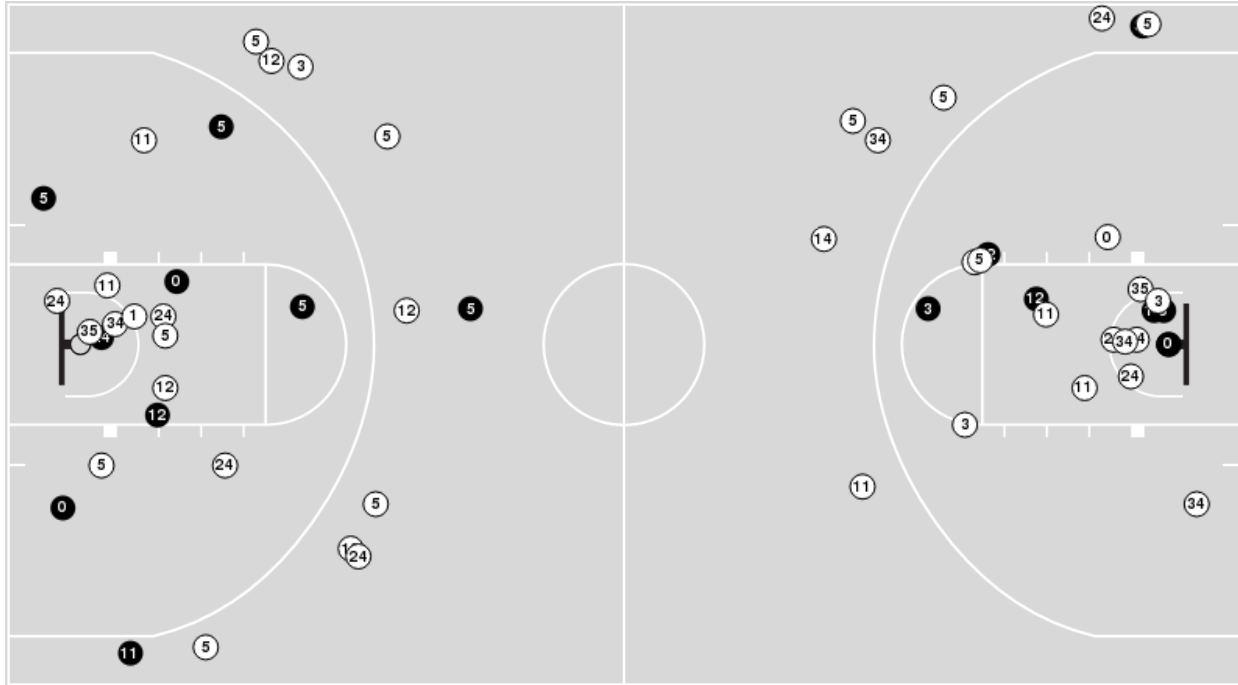
**ETSU**

| No | Name             | Mins  |       | Score   |         | Points Diff |     | Points per Min |      | Assists |     | Rebounds |     | Steals |     | Turnovers |     |
|----|------------------|-------|-------|---------|---------|-------------|-----|----------------|------|---------|-----|----------|-----|--------|-----|-----------|-----|
|    |                  | On    | Off   | On      | Off     | On          | Off | On             | Off  | On      | Off | On       | Off | On     | Off | On        | Off |
| 0  | Silas Adheke     | 21:10 | 18:50 | 38 - 24 | 18 - 19 | 14          | -1  | 1.80           | 0.96 | 11      | 5   | 28       | 29  | 5      | 4   | 10        | 7   |
| 1  | Mohab Yasser     | 17:17 | 22:43 | 25 - 25 | 31 - 18 | 0           | 13  | 1.45           | 1.36 | 5       | 11  | 23       | 34  | 2      | 7   | 6         | 11  |
| 2  | Jordan King      | 26:02 | 13:58 | 37 - 32 | 19 - 11 | 5           | 8   | 1.42           | 1.36 | 13      | 3   | 31       | 26  | 6      | 3   | 11        | 6   |
| 4  | David Sloan      | 31:30 | 08:30 | 45 - 28 | 11 - 15 | 17          | -4  | 1.43           | 1.29 | 13      | 3   | 48       | 9   | 8      | 1   | 14        | 3   |
| 14 | Ty Brewer        | 28:01 | 11:59 | 30 - 32 | 26 - 11 | -2          | 15  | 1.07           | 2.17 | 8       | 8   | 42       | 15  | 8      | 1   | 11        | 6   |
| 22 | Jaden Seymour    | 08:12 | 31:48 | 8 - 6   | 48 - 37 | 2           | 11  | 0.98           | 1.51 | 2       | 14  | 8        | 49  | 2      | 7   | 4         | 13  |
| 23 | Vonnie Patterson | 26:29 | 13:31 | 38 - 26 | 18 - 17 | 12          | 1   | 1.43           | 1.33 | 10      | 6   | 36       | 21  | 5      | 4   | 12        | 5   |
| 25 | Ledarius Brewer  | 18:42 | 21:18 | 23 - 18 | 33 - 25 | 5           | 8   | 1.23           | 1.55 | 7       | 9   | 33       | 24  | 6      | 3   | 8         | 9   |
| 33 | Charlie Weber    | 22:37 | 17:23 | 36 - 24 | 20 - 19 | 12          | 1   | 1.59           | 1.15 | 11      | 5   | 36       | 21  | 3      | 6   | 9         | 8   |

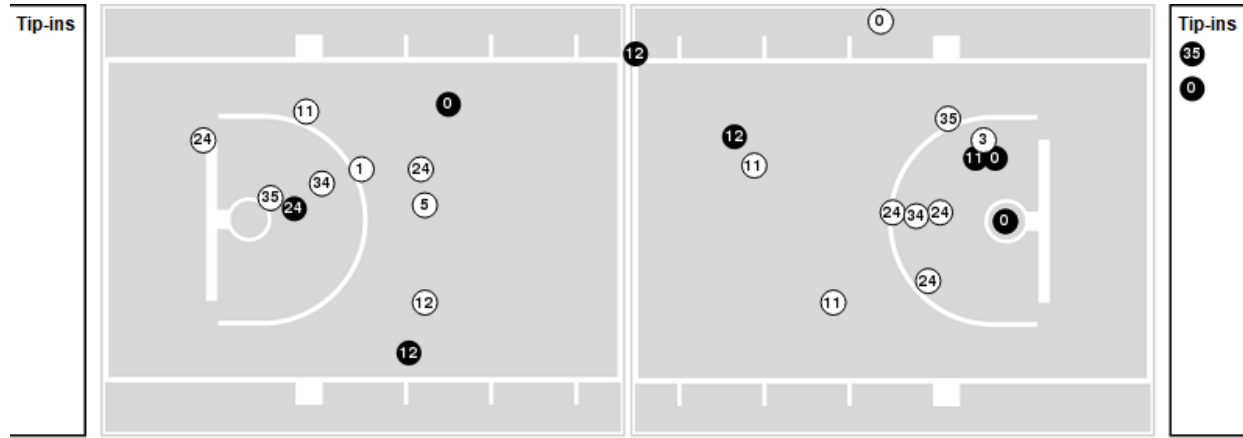


Players => AllFG Types=>AllResults=>All  
**USC Upstate**

**All Field Goals**



**Blow Up Chart**



● Made    ○ Missed    N - Player Number

| USC Upstate | M/A   | %  |
|-------------|-------|----|
| Field Goals | 17/57 | 30 |
| 2 Points    | 14/38 | 37 |
| 3 Points    | 3/19  | 16 |
| Free Throws | 6/10  | 60 |

| USC Upstate          | M/A         | %   |
|----------------------|-------------|-----|
| Points in the Paint  | 16 (8 / 24) | 33  |
| Fast Break Points    | 6 (3/3)     | 100 |
| Second Chance Points | 11 (8/16)   | 50  |
| Effective FG%        | 32          |     |

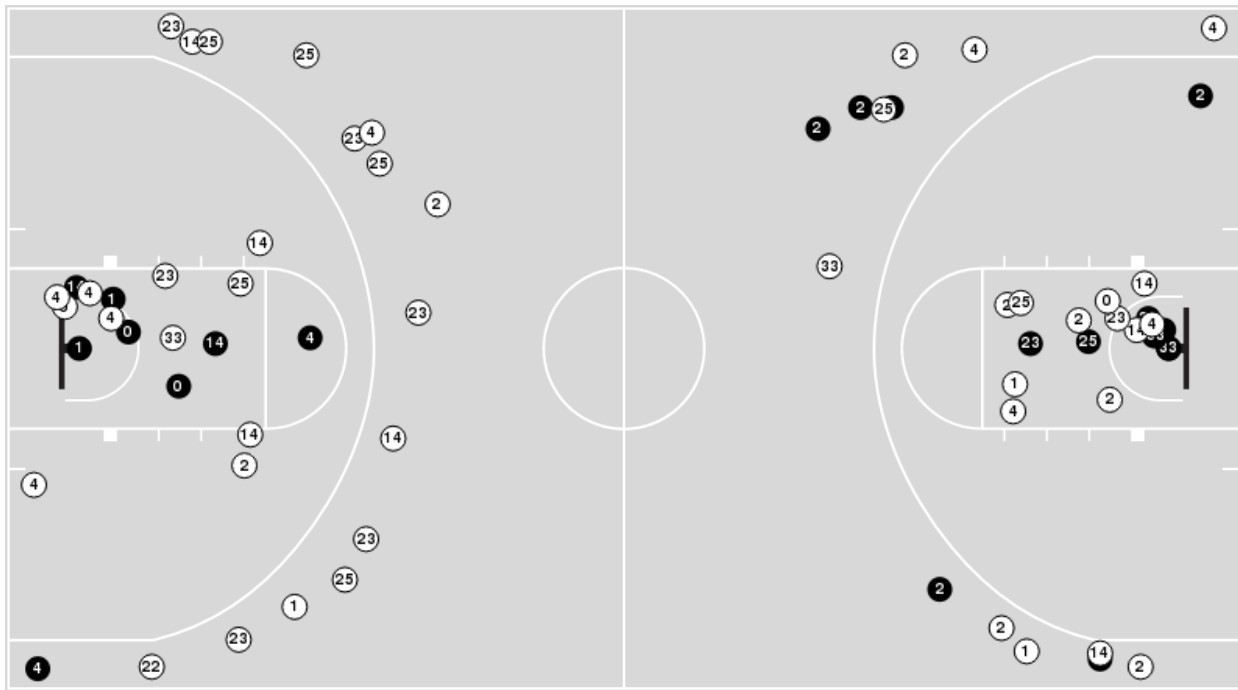


**Officials:** Billy Dunlap, Michael Wallace, Anthony Eades

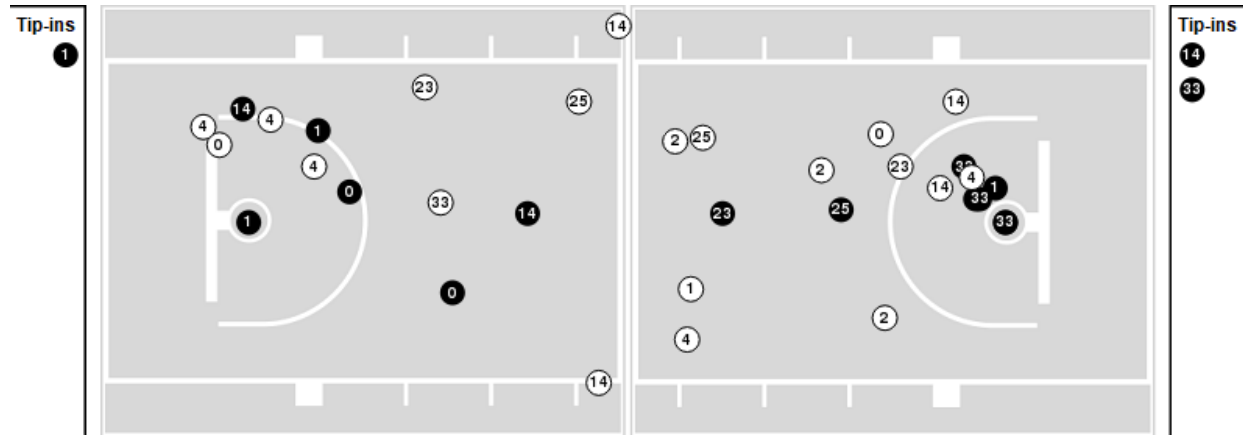
Players => 0, 1, 2, 4, 5, 11, 14, 15, 20, 21, 22, 23, 24, 25, 33FG Types=>AllResults=>All

**ETSU**

**All Field Goals**



**Blow Up Chart**



● Made ○ Missed N - Player Number

| ETSU        | M/A   | %  |
|-------------|-------|----|
| Field Goals | 22/68 | 32 |
| 2 Points    | 16/38 | 42 |
| 3 Points    | 6/30  | 20 |
| Free Throws | 6/10  | 60 |

| ETSU                 | M/A          | %  |
|----------------------|--------------|----|
| Points in the Paint  | 28 (14 / 32) | 44 |
| Fast Break Points    | 0 (0/0)      | 0  |
| Second Chance Points | 19 (9/23)    | 39 |
| Effective FG%        | 37           |    |



**USC Upstate at ETSU**

11/18/21 Freedom Hall, Johnson City  
2021-22 Men's Basketball

**Game Time:** 7:00 PM  
**Game Duration:** 1:49  
**Attendance:** 3,036

**Officials:** Billy Dunlap, Michael Wallace, Anthony Eades

**USC Upstate**

| Lineup  | Quarter On | Time On | Quarter Off | Time Off | Time on Court | Score | Score Diff | Reb | Stl | Tov | Ass | PPP    |
|---|------------|---------|-------------|----------|---------------|-------|------------|-----|-----|-----|-----|--------|
| 5- Mozone B/ 11- Gainey J/ 12- White D/ 24- Alves N/ 34- Aldrich J/         | 1          | 20:00   | 1           | 18:19    | 01:41         | 0-2   | -2         | 2   | 2   | 1   | 0   | 0.0000 |
| 3- Goodloe M/ 5- Mozone B/ 11- Gainey J/ 12- White D/ 34- Aldrich J/        | 1          | 18:19   | 1           | 15:34    | 02:45         | 7-5   | 2          | 3   | 0   | 0   | 0   | 1.4344 |
| 3- Goodloe M/ 5- Mozone B/ 11- Gainey J/ 12- White D/ 35- Langlais A/       | 1          | 15:34   | 1           | 13:47    | 01:47         | 2-1   | 1          | 3   | 0   | 1   | 0   | 0.6667 |
| 3- Goodloe M/ 4- Breazeale J/ 5- Mozone B/ 11- Gainey J/ 35- Langlais A/    | 1          | 13:47   | 1           | 12:59    | 00:48         | 0-2   | -2         | 1   | 0   | 0   | 0   | 0.0000 |
| 4- Breazeale J/ 5- Mozone B/ 11- Gainey J/ 24- Alves N/ 35- Langlais A/     | 1          | 12:59   | 1           | 12:42    | 00:17         | 0-0   | 0          | 0   | 0   | 0   | 0   | 0.0000 |
| 4- Breazeale J/ 5- Mozone B/ 14- Rideau Jr. F/ 24- Alves N/ 35- Langlais A/ | 1          | 12:42   | 1           | 12:28    | 00:14         | 0-0   | 0          | 0   | 0   | 0   | 0   | 0.0000 |
| 0- Smith K/ 4- Breazeale J/ 5- Mozone B/ 14- Rideau Jr. F/ 24- Alves N/     | 1          | 12:28   | 1           | 11:01    | 01:27         | 2-4   | -2         | 2   | 0   | 0   | 0   | 1.0000 |
| 0- Smith K/ 4- Breazeale J/ 11- Gainey J/ 24- Alves N/ 34- Aldrich J/       | 1          | 11:01   | 1           | 09:19    | 01:42         | 2-0   | 2          | 1   | 1   | 0   | 0   | 0.6667 |
| 0- Smith K/ 11- Gainey J/ 12- White D/ 24- Alves N/ 34- Aldrich J/          | 1          | 09:19   | 1           | 08:20    | 00:59         | 0-0   | 0          | 1   | 0   | 1   | 0   | 0.0000 |
| 0- Smith K/ 3- Goodloe M/ 5- Mozone B/ 12- White D/ 34- Aldrich J/          | 1          | 08:20   | 1           | 05:23    | 02:57         | 5-0   | 5          | 3   | 1   | 2   | 2   | 0.8333 |
| 0- Smith K/ 5- Mozone B/ 11- Gainey J/ 12- White D/ 34- Aldrich J/          | 1          | 05:23   | 1           | 04:11    | 01:12         | 0-3   | -3         | 1   | 0   | 1   | 0   | 0.0000 |
| 5- Mozone B/ 11- Gainey J/ 12- White D/ 25- Watson J/ 34- Aldrich J/        | 1          | 04:11   | 1           | 03:18    | 00:53         | 0-4   | -4         | 0   | 1   | 1   | 0   | 0.0000 |
| 3- Goodloe M/ 4- Breazeale J/ 11- Gainey J/ 25- Watson J/ 34- Aldrich J/    | 1          | 03:18   | 1           | 02:28    | 00:50         | 0-0   | 0          | 0   | 0   | 0   | 0   | 0.0000 |
| 4- Breazeale J/ 5- Mozone B/ 11- Gainey J/ 24- Alves N/ 34- Aldrich J/      | 1          | 02:28   | 1           | 01:36    | 00:52         | 0-0   | 0          | 1   | 0   | 1   | 0   | 0.0000 |
| 5- Mozone B/ 11- Gainey J/ 12- White D/ 24- Alves N/ 34- Aldrich J/         | 1          | 01:36   | 2           | 18:21    | 03:15         | 3-1   | 2          | 5   | 0   | 1   | 1   | 0.6000 |
| 5- Mozone B/ 11- Gainey J/ 12- White D/ 24- Alves N/ 35- Langlais A/        | 2          | 18:21   | 2           | 17:27    | 00:54         | 0-3   | -3         | 0   | 0   | 0   | 0   | 0.0000 |
| 0- Smith K/ 5- Mozone B/ 11- Gainey J/ 12- White D/ 24- Alves N/            | 2          | 17:27   | 2           | 16:55    | 00:32         | 0-2   | -2         | 1   | 0   | 1   | 0   | 0.0000 |
| 0- Smith K/ 4- Breazeale J/ 5- Mozone B/ 11- Gainey J/ 24- Alves N/         | 2          | 16:55   | 2           | 16:12    | 00:43         | 0-3   | -3         | 0   | 0   | 0   | 0   | 0.0000 |
| 0- Smith K/ 3- Goodloe M/ 4- Breazeale J/ 5- Mozone B/ 11- Gainey J/        | 2          | 16:12   | 2           | 13:14    | 02:58         | 5-6   | -1         | 1   | 0   | 1   | 2   | 1.0000 |
| 0- Smith K/ 3- Goodloe M/ 5- Mozone B/ 11- Gainey J/ 12- White D/           | 2          | 13:14   | 2           | 11:16    | 01:58         | 2-5   | -3         | 0   | 0   | 0   | 1   | 0.6667 |
| 5- Mozone B/ 11- Gainey J/ 12- White D/ 24- Alves N/ 34- Aldrich J/         | 2          | 11:16   | 2           | 08:34    | 02:42         | 6-2   | 4          | 4   | 1   | 0   | 0   | 1.5464 |
| 3- Goodloe M/ 12- White D/ 14- Rideau Jr. F/ 24- Alves N/ 34- Aldrich J/    | 2          | 08:34   | 2           | 07:56    | 00:38         | 0-0   | 0          | 0   | 1   | 1   | 0   | 0.0000 |
| 5- Mozone B/ 11- Gainey J/ 12- White D/ 24- Alves N/ 34- Aldrich J/         | 2          | 07:56   | 2           | 05:39    | 02:17         | 4-0   | 4          | 3   | 0   | 0   | 0   | 1.4493 |
| 0- Smith K/ 5- Mozone B/ 11- Gainey J/ 12- White D/ 24- Alves N/            | 2          | 05:39   | 2           | 01:07    | 04:32         | 3-13  | -10        | 2   | 0   | 0   | 0   | 0.4658 |
| 4- Breazeale J/ 5- Mozone B/ 11- Gainey J/ 24- Alves N/ 34- Aldrich J/      | 2          | 01:07   | 2           | 00:53    | 00:14         | 0-0   | 0          | 0   | 0   | 0   | 0   | 0.0000 |
| 1- Hodge Q/ 4- Breazeale J/ 5- Mozone B/ 24- Alves N/ 34- Aldrich J/        | 2          | 00:53   | 2           | 00:00    | 00:53         | 2-0   | 2          | 1   | 1   | 1   | 1   | 1.0000 |



USC Upstate at ETSU

11/18/21 Freedom Hall, Johnson City
2021-22 Men's Basketball

Game Time: 7:00 PM
Game Duration: 1:49
Attendance: 3,036

Officials: Billy Dunlap, Michael Wallace, Anthony Eades

ETSU

Table with columns: Lineup, Quarter On, Time On, Quarter Off, Time Off, Time on Court, Score, Score Diff, Reb, Stl, Tov, Ass, PPP. Contains 40 rows of game rotation data.



**USC Upstate at ETSU**

11/18/21 Freedom Hall, Johnson City  
2021-22 Men's Basketball

**Game Time:** 7:00 PM  
**Game Duration:** 1:49  
**Attendance:** 3,036

**Officials:** Billy Dunlap, Michael Wallace, Anthony Eades

**USC Upstate**

| Lineup  | Time  | Score | Score Diff | Pts/Min | Reb | Stl | Tov | Ass | PPP    |
|---|-------|-------|------------|---------|-----|-----|-----|-----|--------|
| 5- Mozone B/ 11- Gainey J/ 12- White D/ 24- Alves N/ 34- Aldrich J/         | 09:55 | 13-5  | 8          | 1.3109  | 14  | 3   | 2   | 1   | 0.9531 |
| 0- Smith K/ 5- Mozone B/ 11- Gainey J/ 12- White D/ 24- Alves N/            | 05:04 | 3-15  | -12        | 0.5921  | 3   | 0   | 1   | 0   | 0.4032 |
| 0- Smith K/ 3- Goodloe M/ 4- Breazeale J/ 5- Mozone B/ 11- Gainey J/        | 02:58 | 5-6   | -1         | 1.6854  | 1   | 0   | 1   | 2   | 1.0000 |
| 0- Smith K/ 3- Goodloe M/ 5- Mozone B/ 12- White D/ 34- Aldrich J/          | 02:57 | 5-0   | 5          | 1.6949  | 3   | 1   | 2   | 2   | 0.8333 |
| 3- Goodloe M/ 5- Mozone B/ 11- Gainey J/ 12- White D/ 34- Aldrich J/        | 02:45 | 7-5   | 2          | 2.5455  | 3   | 0   | 0   | 0   | 1.4344 |
| 0- Smith K/ 3- Goodloe M/ 5- Mozone B/ 11- Gainey J/ 12- White D/           | 01:58 | 2-5   | -3         | 1.0169  | 0   | 0   | 0   | 1   | 0.6667 |
| 3- Goodloe M/ 5- Mozone B/ 11- Gainey J/ 12- White D/ 35- Langlais A/       | 01:47 | 2-1   | 1          | 1.1215  | 3   | 0   | 1   | 0   | 0.6667 |
| 0- Smith K/ 4- Breazeale J/ 11- Gainey J/ 24- Alves N/ 34- Aldrich J/       | 01:42 | 2-0   | 2          | 1.1765  | 1   | 1   | 0   | 0   | 0.6667 |
| 0- Smith K/ 4- Breazeale J/ 5- Mozone B/ 14- Rideau Jr. F/ 24- Alves N/     | 01:27 | 2-4   | -2         | 1.3793  | 2   | 0   | 0   | 0   | 1.0000 |
| 0- Smith K/ 5- Mozone B/ 11- Gainey J/ 12- White D/ 34- Aldrich J/          | 01:12 | 0-3   | -3         | 0.0000  | 1   | 0   | 1   | 0   | 0.0000 |
| 4- Breazeale J/ 5- Mozone B/ 11- Gainey J/ 24- Alves N/ 34- Aldrich J/      | 01:06 | 0-0   | 0          | 0.0000  | 1   | 0   | 1   | 0   | 0.0000 |
| 0- Smith K/ 11- Gainey J/ 12- White D/ 24- Alves N/ 34- Aldrich J/          | 00:59 | 0-0   | 0          | 0.0000  | 1   | 0   | 1   | 0   | 0.0000 |
| 5- Mozone B/ 11- Gainey J/ 12- White D/ 24- Alves N/ 35- Langlais A/        | 00:54 | 0-3   | -3         | 0.0000  | 0   | 0   | 0   | 0   | 0.0000 |
| 5- Mozone B/ 11- Gainey J/ 12- White D/ 25- Watson J/ 34- Aldrich J/        | 00:53 | 0-4   | -4         | 0.0000  | 0   | 1   | 1   | 0   | 0.0000 |
| 1- Hodge Q/ 4- Breazeale J/ 5- Mozone B/ 24- Alves N/ 34- Aldrich J/        | 00:53 | 2-0   | 2          | 2.2642  | 1   | 1   | 1   | 1   | 1.0000 |
| 3- Goodloe M/ 4- Breazeale J/ 11- Gainey J/ 25- Watson J/ 34- Aldrich J/    | 00:50 | 0-0   | 0          | 0.0000  | 0   | 0   | 0   | 0   | 0.0000 |
| 3- Goodloe M/ 4- Breazeale J/ 5- Mozone B/ 11- Gainey J/ 35- Langlais A/    | 00:48 | 0-2   | -2         | 0.0000  | 1   | 0   | 0   | 0   | 0.0000 |
| 0- Smith K/ 4- Breazeale J/ 5- Mozone B/ 11- Gainey J/ 24- Alves N/         | 00:43 | 0-3   | -3         | 0.0000  | 0   | 0   | 0   | 0   | 0.0000 |
| 3- Goodloe M/ 12- White D/ 14- Rideau Jr. F/ 24- Alves N/ 34- Aldrich J/    | 00:38 | 0-0   | 0          | 0.0000  | 0   | 1   | 1   | 0   | 0.0000 |
| 4- Breazeale J/ 5- Mozone B/ 11- Gainey J/ 24- Alves N/ 35- Langlais A/     | 00:17 | 0-0   | 0          | 0.0000  | 0   | 0   | 0   | 0   | 0.0000 |
| 4- Breazeale J/ 5- Mozone B/ 14- Rideau Jr. F/ 24- Alves N/ 35- Langlais A/ | 00:14 | 0-0   | 0          | 0.0000  | 0   | 0   | 0   | 0   | 0.0000 |



**USC Upstate at ETSU**

11/18/21 Freedom Hall, Johnson City  
2021-22 Men's Basketball

Game Time: 7:00 PM

Game Duration: 1:49

Attendance: 3,036

Officials: Billy Dunlap, Michael Wallace, Anthony Eades

**ETSU**

| Lineup   | Time  | Score | Score Diff | Pts/Min | Reb | Stl | Tov | Ass | PPP    |
|--|-------|-------|------------|---------|-----|-----|-----|-----|--------|
| 0- Adheke S/ 2- King J/ 4- Sloan D/ 14- Brewer T/ 25- Brewer L/        | 06:04 | 7-6   | 1          | 1.1538  | 8   | 3   | 3   | 3   | 0.6705 |
| 0- Adheke S/ 2- King J/ 4- Sloan D/ 23- Patterson V/ 33- Weber C/      | 05:29 | 13-5  | 8          | 2.3708  | 6   | 0   | 2   | 5   | 1.6250 |
| 0- Adheke S/ 1- Yasser M/ 4- Sloan D/ 14- Brewer T/ 23- Patterson V/   | 04:37 | 6-7   | -1         | 1.2996  | 6   | 2   | 1   | 0   | 1.0000 |
| 4- Sloan D/ 14- Brewer T/ 23- Patterson V/ 25- Brewer L/ 33- Weber C/  | 03:18 | 1-0   | 1          | 0.3030  | 10  | 0   | 0   | 0   | 0.3472 |
| 2- King J/ 4- Sloan D/ 14- Brewer T/ 25- Brewer L/ 33- Weber C/        | 03:04 | 5-4   | 1          | 1.6304  | 5   | 1   | 0   | 2   | 1.0000 |
| 1- Yasser M/ 2- King J/ 14- Brewer T/ 25- Brewer L/ 33- Weber C/       | 02:41 | 6-5   | 1          | 2.2360  | 6   | 0   | 0   | 1   | 1.5000 |
| 1- Yasser M/ 2- King J/ 22- Seymour J/ 23- Patterson V/ 33- Weber C/   | 02:27 | 0-4   | -4         | 0.0000  | 1   | 0   | 1   | 0   | 0.0000 |
| 0- Adheke S/ 1- Yasser M/ 4- Sloan D/ 23- Patterson V/ 33- Weber C/    | 01:58 | 5-2   | 3          | 2.5424  | 4   | 0   | 2   | 1   | 1.1261 |
| 1- Yasser M/ 4- Sloan D/ 14- Brewer T/ 22- Seymour J/ 25- Brewer L/    | 01:42 | 0-2   | -2         | 0.0000  | 2   | 0   | 2   | 0   | 0.0000 |
| 2- King J/ 4- Sloan D/ 14- Brewer T/ 22- Seymour J/ 23- Patterson V/   | 01:40 | 0-0   | 0          | 0.0000  | 1   | 1   | 0   | 0   | 0.0000 |
| 1- Yasser M/ 2- King J/ 14- Brewer T/ 23- Patterson V/ 33- Weber C/    | 01:37 | 2-3   | -1         | 1.2371  | 2   | 0   | 0   | 1   | 1.0000 |
| 0- Adheke S/ 1- Yasser M/ 4- Sloan D/ 22- Seymour J/ 23- Patterson V/  | 01:12 | 3-0   | 3          | 2.5000  | 2   | 0   | 0   | 1   | 1.2931 |
| 0- Adheke S/ 2- King J/ 4- Sloan D/ 14- Brewer T/ 23- Patterson V/     | 01:05 | 1-2   | -1         | 0.9231  | 2   | 0   | 2   | 0   | 0.4098 |
| 2- King J/ 14- Brewer T/ 23- Patterson V/ 25- Brewer L/ 33- Weber C/   | 01:00 | 0-1   | -1         | 0.0000  | 0   | 1   | 2   | 0   | 0.0000 |
| 4- Sloan D/ 22- Seymour J/ 23- Patterson V/ 25- Brewer L/ 33- Weber C/ | 00:53 | 4-0   | 4          | 4.5283  | 2   | 1   | 1   | 1   | 1.6393 |
| 0- Adheke S/ 1- Yasser M/ 2- King J/ 14- Brewer T/ 23- Patterson V/    | 00:45 | 2-2   | 0          | 2.6667  | 0   | 0   | 0   | 1   | 2.0000 |
| 1- Yasser M/ 4- Sloan D/ 14- Brewer T/ 22- Seymour J/ 23- Patterson V/ | 00:18 | 0-0   | 0          | 0.0000  | 0   | 0   | 0   | 0   | 0.0000 |
| 2- King J/ 4- Sloan D/ 14- Brewer T/ 23- Patterson V/ 33- Weber C/     | 00:10 | 0-0   | 0          | 0.0000  | 0   | 0   | 1   | 0   | 0.0000 |
| 0- Adheke S/ 1- Yasser M/ 2- King J/ 22- Seymour J/ 23- Patterson V/   | 00:00 | 1-0   | 1          | ∞       | 0   | 0   | 0   | 0   | 2.2727 |