



**Officials:** Sean Cassady, Gerald Williams, Landon Brandes

**ETSU - 67**

**Record: 0-1**

NO.	Name	F	Min	FG	3P	FT	Rebounds			Fouls		TP	AS	TO	ST	Blocks		+/-
				M-A	M-A	M-A	OR	DR	TOT	PF	FD					BS	BA	
0	Silas Adheke	F	25:10	2-4	0-0	1-2	2	2	4	3	2	5	1	1	1	1	0	-11
14	Ty Brewer	F	31:53	4-10	2-7	2-2	1	7	8	2	1	12	1	0	1	0	0	-5
2	Jordan King	G	25:36	1-8	0-5	0-0	0	4	4	2	3	2	4	2	1	0	0	-3
4	David Sloan	G	29:34	5-10	3-6	2-2	1	1	2	1	3	15	8	0	0	0	0	-2
25	Ledarius Brewer	G	30:50	6-16	1-6	0-0	2	2	4	1	0	13	1	1	0	1	0	-8
23	Vonnie Patterson		22:03	4-5	3-4	0-0	0	3	3	2	1	11	0	1	2	0	0	-1
33	Charlie Weber		14:50	0-1	0-0	0-0	0	1	1	2	1	0	1	0	1	0	0	9
1	Mohab Yasser		11:57	2-4	0-2	0-0	2	0	2	2	1	4	0	0	0	0	0	8
22	Jaden Seymour		04:56	0-2	0-2	0-0	0	0	0	1	0	0	0	0	0	0	0	-1
20	Kordell Charles		03:11	2-2	1-1	0-0	1	0	1	0	0	5	0	1	1	0	0	4
Team							0	0	0			0		1				
<b>Totals</b>				26-62	10-33	5-6	9	20	29	16	12	67	16	7	7	2	0	-2

Shooting By Period		
1 <sup>st</sup> FG%	13-32	40.6%
3PT%	7-19	36.8%
FT%	0-0	0%
2 <sup>nd</sup> FG%	13-30	43.3%
3PT%	3-14	21.4%
FT%	5-6	83.3%
GM FG%	26-62	41.9%
3PT%	10-33	30.3%
FT%	5-6	83.3%

Dead Ball Rebounds: 0, 2

**Technical Fouls::NONE**

**Appalachian St. - 69**

**Record: 1-1**

NO.	Name	F	Min	FG	3P	FT	Rebounds			Fouls		TP	AS	TO	ST	Blocks		+/-
				M-A	M-A	M-A	OR	DR	TOT	PF	FD					BS	BA	
25	James Lewis Jr.	F	20:13	1-4	0-0	5-8	4	4	8	1	7	7	1	0	0	0	0	4
1	Justin Forrest	G	16:57	1-5	1-4	6-6	0	1	1	4	4	9	5	3	0	0	0	9
5	Michael Almonacy	G	34:16	3-6	3-5	0-0	0	4	4	1	0	9	3	0	0	0	0	2
11	Donovan Gregory	G	25:38	6-10	0-1	0-0	3	4	7	1	1	12	3	4	2	0	0	8
20	Adrian Delph	G	37:30	7-16	3-7	2-2	1	6	7	1	1	19	1	3	1	0	1	2
23	Terence Harcum		20:55	1-3	0-1	0-2	0	1	1	0	1	2	1	1	0	0	1	4
4	RJ Duhart		07:21	1-1	0-0	0-0	0	0	0	0	1	2	0	1	1	0	0	-11
10	Michael Eads Jr.		16:17	3-4	3-4	0-0	0	3	3	3	1	9	0	0	0	0	0	0
15	CJ Huntley		16:35	0-1	0-1	0-0	1	2	3	1	0	0	0	0	0	0	0	-3
2	Christopher Mantis		04:18	0-2	0-2	0-0	0	0	0	0	0	0	1	0	0	0	0	-5
Team							1	1	2			0		0				
<b>Totals</b>				23-52	10-25	13-18	10	26	36	12	16	69	15	12	4	0	2	2

Shooting By Period		
1 <sup>st</sup> FG%	11-27	40.7%
3PT%	3-11	27.3%
FT%	3-5	60%
2 <sup>nd</sup> FG%	12-25	48.0%
3PT%	7-14	50.0%
FT%	10-13	76.9%
GM FG%	23-52	44.2%
3PT%	10-25	40.0%
FT%	13-18	72.2%

Dead Ball Rebounds: 2, 2

**Technical Fouls::NONE**

	ETS	APP
<b>Biggest lead</b>	10 (1 <sup>st</sup> 8:20)	7 (1 <sup>st</sup> 16:36)
<b>Best Scoring Run</b>	8 (1 <sup>st</sup> 12:50)	9 (1 <sup>st</sup> 16:36)
<b>Lead Changes</b>	9	
<b>Times Tied</b>	10	
<b>Time with Lead</b>	21:23	12:40

Points from	ETS	APP
<b>Turnovers</b>	9	7
<b>Paint</b>	22	20
<b>Second Chance</b>	13	13
<b>Fast Breaks</b>	13	9
<b>Bench</b>	20	13

	Period by Period Scoring		
	1st	2nd	TOT
<b>ETS</b>	33	34	67
<b>APP</b>	28	41	69



**Period 1**

**Quarter Starters:**

<b>APP</b>	1 Forrest J	5 Almonacy M	11 Gregory D	20 Delph A	25 Lewis Jr. J
<b>ETS</b>	0 Adheke S	2 King J	4 Sloan D	14 Brewer T	25 Brewer L

Game Time	APP	Score	Diff	ETS
20:00	25 LEWIS JR. J jumpball lost			14 BREWER T jumpball won
19:47		<b>0-2</b>	<b>-2</b>	0 ADHEKE S 2pt FG in the paint, hook shot made (2)
19:47				4 SLOAN D assist (1)
19:30	11 GREGORY D 2pt FG in the paint, dunk, made (2)	<b>2-2</b>	<b>0</b>	
19:30	1 FORREST J assist (1)			
19:00				0 ADHEKE S 2pt FG in the paint, turnaround jump shot missed
18:56	20 DELPH A defensive rebound (1)			
18:52	20 DELPH A 2pt FG outside the paint, jump shot made (2)	<b>4-2</b>	<b>2</b>	
18:25				2 KING J 3pt FG , jump shot missed
18:20	25 LEWIS JR. J defensive rebound (1)			
18:12	5 ALMONACY M 3pt FG , jump shot made (3)	<b>7-2</b>	<b>5</b>	
18:12	1 FORREST J assist (2)			
17:51				25 BREWER L 2pt FG outside the paint, jump shot missed
17:50				4 SLOAN D offensive rebound (1)
17:50	1 FORREST J foul personal (1 - 1)			4 SLOAN D foul drawn (1)
17:46	1 FORREST J substitution out			
17:46	23 HARCUM T substitution in			
17:44	11 GREGORY D 2pt FG in the paint, jump shot missed			
17:39				0 ADHEKE S defensive rebound (1)
17:32				14 BREWER T 3pt FG , jump shot missed
17:28	20 DELPH A defensive rebound (2)			
17:24	5 ALMONACY M 3pt FG , jump shot missed			
17:20				14 BREWER T defensive rebound (1)
17:18				4 SLOAN D 2pt FG in the paint, layup missed
17:13	20 DELPH A defensive rebound (3)			
16:49	25 LEWIS JR. J foul drawn (1)			4 SLOAN D foul personal (1 - 1)
16:49	25 LEWIS JR. J substitution out			
16:49	4 DUHART R substitution in			
16:45	20 DELPH A 2pt FG in the paint, jump shot missed			
16:40	11 GREGORY D offensive rebound (1)			
16:36	11 GREGORY D 2pt FG second chance in the paint, layup made (4)	<b>9-2</b>	<b>7</b>	
16:23		<b>9-5</b>	<b>4</b>	14 BREWER T 3pt FG , jump shot made (3)
16:23				4 SLOAN D assist (2)
15:51	20 DELPH A 3pt FG , jump shot missed			
15:51				defensive dead ball rebound (1)
15:51	Timeout media			
15:51	5 ALMONACY M substitution out			
15:51	11 GREGORY D substitution out			
15:51	20 DELPH A substitution out			
15:51	1 FORREST J substitution in			
15:51	10 EADS JR. M substitution in			
15:51	15 HUNTLEY C substitution in			



Game Time	APP	Score	Diff	ETS
15:51				2 KING J substitution out
15:51				23 PATTERSON V substitution in
15:27	1 FORREST J foul personal (2 - 2)			4 SLOAN D foul drawn (2)
15:27	1 FORREST J substitution out			
15:27	20 DELPH A substitution in			
15:27				0 ADHEKE S substitution out
15:27				33 WEBER C substitution in
15:22				25 BREWER L 3pt FG , jump shot missed
15:18				25 BREWER L offensive rebound (1)
15:05				4 SLOAN D 3pt FG second chance, jump shot missed
15:02	10 EADS JR. M defensive rebound (1)			
14:48	23 HARCUM T 2pt FG outside the paint, jump shot made (2)	<b>11-5</b>	<b>6</b>	
14:24		<b>11-7</b>	<b>4</b>	25 BREWER L 2pt FG in the paint, dunk, made (2)
14:08	20 DELPH A 2pt FG in the paint, driving layup missed			
14:05				defensive dead ball rebound (2)
14:05	23 HARCUM T substitution out			
14:05	5 ALMONACY M substitution in			
13:36		<b>11-10</b>	<b>1</b>	23 PATTERSON V 3pt FG , jump shot made (3)
13:36				4 SLOAN D assist (3)
12:56	20 DELPH A 3pt FG , jump shot missed			
12:53				25 BREWER L defensive rebound (2)
12:50		<b>11-13</b>	<b>-2</b>	4 SLOAN D 3pt FG fast break, jump shot made (3)
12:50				25 BREWER L assist (1)
12:30	4 DUHART R foul drawn (1)			33 WEBER C foul personal (1 - 2)
12:30	4 DUHART R substitution out			
12:30	15 HUNTLEY C substitution out			
12:30	11 GREGORY D substitution in			
12:30	25 LEWIS JR. J substitution in			
12:30				4 SLOAN D substitution out
12:30				14 BREWER T substitution out
12:30				25 BREWER L substitution out
12:30				1 YASSER M substitution in
12:30				2 KING J substitution in
12:30				22 SEYMOUR J substitution in
12:30	11 GREGORY D 2pt FG outside the paint, jump shot missed			
12:28				23 PATTERSON V defensive rebound (1)
12:21				22 SEYMOUR J 3pt FG , jump shot missed
12:17	25 LEWIS JR. J defensive rebound (2)			
11:59	20 DELPH A foul offensive (1 - 3)			2 KING J foul drawn (1)
11:59	20 DELPH A turnover offensive (1)			
11:53	Timeout media			
11:53	10 EADS JR. M substitution out			
11:53	2 MANTIS C substitution in			
11:37	11 GREGORY D steal (1)			23 PATTERSON V turnover lost ball (1)
11:32	11 GREGORY D 2pt FG fast break from turnover in the paint, driving layup made (6)	<b>13-13</b>	<b>0</b>	
11:32	2 MANTIS C assist (1)			
11:22		<b>13-16</b>	<b>-3</b>	23 PATTERSON V 3pt FG , jump shot made (6)
11:22				2 KING J assist (1)



**ETSU at Appalachian St.**

11/12/21 Holmes Convocation Center, Boone  
ETSU at App State

**Game Time:** 6:30 PM  
**Game Duration:** 1:48  
**Attendance:** 3,401

**Officials:** Sean Cassady, Gerald Williams, Landon Brandes

Game Time	APP	Score	Diff	ETS
11:05	11 GREGORY D foul personal (1 - 4)			2 KING J foul drawn (2)
10:48				1 YASSER M 3pt FG , jump shot missed
10:45	25 LEWIS JR. J defensive rebound (3)			
10:45	25 LEWIS JR. J foul drawn (2)			33 WEBER C foul personal (2 - 3)
10:25	2 MANTIS C 3pt FG , jump shot missed			
10:20	25 LEWIS JR. J offensive rebound (4)			
10:18	25 LEWIS JR. J foul drawn (3)			23 PATTERSON V foul shooting (1 - 4)
10:18	25 LEWIS JR. J free throw 1 - 2 missed			
10:18	offensive dead ball rebound (1)			
10:18	25 LEWIS JR. J free throw 2 - 2 made (1)	<b>14-16</b>	<b>-2</b>	
09:59		<b>14-18</b>	<b>-4</b>	1 YASSER M 2pt FG outside the paint, jump shot made (2)
09:59				2 KING J assist (2)
09:34	20 DELPH A foul drawn (1)			22 SEYMOUR J foul shooting (1 - 5)
09:34	20 DELPH A free throw 1 - 2 made (3)	<b>15-18</b>	<b>-3</b>	
09:34	11 GREGORY D substitution out			
09:34	4 DUHART R substitution in			
09:34				2 KING J substitution out
09:34				22 SEYMOUR J substitution out
09:34				4 SLOAN D substitution in
09:34				20 CHARLES K substitution in
09:34	20 DELPH A free throw 2 - 2 made (4)	<b>16-18</b>	<b>-2</b>	
09:25		<b>16-21</b>	<b>-5</b>	20 CHARLES K 3pt FG , jump shot made (3)
09:25				4 SLOAN D assist (4)
09:01	20 DELPH A turnover bad pass (2)			23 PATTERSON V steal (1)
08:57		<b>16-23</b>	<b>-7</b>	23 PATTERSON V 2pt FG fast break from turnover in the paint, driving layup made (8)
08:43	4 DUHART R turnover lost ball (1)			20 CHARLES K steal (1)
08:38	4 DUHART R steal (1)			20 CHARLES K turnover lost ball (1)
08:38	4 DUHART R substitution out			
08:38	15 HUNTLEY C substitution in			
08:38				1 YASSER M substitution out
08:38				20 CHARLES K substitution out
08:38				33 WEBER C substitution out
08:38				0 ADHEKE S substitution in
08:38				14 BREWER T substitution in
08:38				25 BREWER L substitution in
08:27	20 DELPH A 2pt FG from turnover in the paint, turnaround jump shot missed			
08:23				14 BREWER T defensive rebound (2)
08:20		<b>16-26</b>	<b>-10</b>	25 BREWER L 3pt FG fast break, jump shot made (5)
08:20				4 SLOAN D assist (5)
07:49	2 MANTIS C 3pt FG , jump shot missed			
07:45	15 HUNTLEY C offensive rebound (1)			
07:40	20 DELPH A 3pt FG second chance, jump shot made (7)	<b>19-26</b>	<b>-7</b>	
07:40	5 ALMONACY M assist (1)			
07:35	Timeout 30 Sec			
07:35				Timeout media
07:35	2 MANTIS C substitution out			
07:35	25 LEWIS JR. J substitution out			
07:35	1 FORREST J substitution in			



Game Time	APP	Score	Diff	ETS
07:35	11 GREGORY D substitution in			
07:35				23 PATTERSON V substitution out
07:35				2 KING J substitution in
07:17				2 KING J turnover bad pass (1)
06:56	1 FORREST J foul offensive (3 - 5)			2 KING J foul drawn (3)
06:56	1 FORREST J turnover offensive (1)			
06:56	1 FORREST J substitution out			
06:56	23 HARCUM T substitution in			
06:43				14 BREWER T 2pt FG from turnover outside the paint, jump shot missed
06:38	5 ALMONACY M defensive rebound (1)			
06:30	11 GREGORY D 2pt FG in the paint, layup made (8)	<b>21-26</b>	<b>-5</b>	
06:30	20 DELPH A assist (1)			
06:03				2 KING J 3pt FG , jump shot missed
05:58	11 GREGORY D defensive rebound (2)			
05:56	5 ALMONACY M 3pt FG fast break, jump shot made (6)	<b>24-26</b>	<b>-2</b>	
05:56	11 GREGORY D assist (1)			
05:48				Timeout 60 Sec
05:35				2 KING J 3pt FG , jump shot missed
05:30	15 HUNTLEY C defensive rebound (2)			
05:13	20 DELPH A 3pt FG , jump shot missed			
05:09				2 KING J defensive rebound (1)
05:03				25 BREWER L 3pt FG , jump shot missed
04:59	5 ALMONACY M defensive rebound (2)			
04:50	15 HUNTLEY C 3pt FG , jump shot missed			
04:47				14 BREWER T defensive rebound (3)
04:40		<b>24-29</b>	<b>-5</b>	4 SLOAN D 3pt FG , jump shot made (6)
04:40				2 KING J assist (3)
04:11	11 GREGORY D 3pt FG , jump shot missed			
04:07				2 KING J defensive rebound (2)
04:02				25 BREWER L 2pt FG in the paint, layup missed
03:54				25 BREWER L offensive rebound (3)
03:54		<b>24-31</b>	<b>-7</b>	25 BREWER L 2pt FG second chance in the paint, layup made (7)
03:33	5 ALMONACY M 2pt FG outside the paint, turnaround jump shot missed			
03:28	11 GREGORY D offensive rebound (3)			
03:28	11 GREGORY D turnover lost ball (1)			
03:28	Timeout media			
03:28	11 GREGORY D substitution out			
03:28	15 HUNTLEY C substitution out			
03:28	20 DELPH A substitution out			
03:28	4 DUHART R substitution in			
03:28	10 EADS JR. M substitution in			
03:28	25 LEWIS JR. J substitution in			
03:28				0 ADHEKE S substitution out
03:28				4 SLOAN D substitution out
03:28				1 YASSER M substitution in
03:28				33 WEBER C substitution in
03:06				2 KING J 3pt FG from turnover, jump shot missed



**ETSU at Appalachian St.**

11/12/21 Holmes Convocation Center, Boone  
ETSU at App State

**Game Time:** 6:30 PM  
**Game Duration:** 1:48  
**Attendance:** 3,401

**Officials:** Sean Cassidy, Gerald Williams, Landon Brandes

Game Time	APP	Score	Diff	ETS
03:01	defensive dead ball rebound (2)			
02:58				14 BREWER T substitution out
02:58				20 CHARLES K substitution in
02:36	4 DUHART R 2pt FG in the paint, layup made (2)	<b>26-31</b>	<b>-5</b>	
02:36	23 HARCUM T assist (1)			
02:14				25 BREWER L 2pt FG outside the paint, jump shot missed
02:11				20 CHARLES K offensive rebound (1)
02:10		<b>26-33</b>	<b>-7</b>	20 CHARLES K 2pt FG second chance in the paint, layup made (5)
01:44	25 LEWIS JR. J 2pt FG in the paint, hook shot missed			
01:41				33 WEBER C defensive rebound (1)
01:26				25 BREWER L 3pt FG , jump shot missed
01:23	10 EADS JR. M defensive rebound (2)			
01:22	10 EADS JR. M foul drawn (1)			1 YASSER M foul loose ball (1 - 6)
01:22	4 DUHART R substitution out			
01:22	10 EADS JR. M substitution out			
01:22	15 HUNTLEY C substitution in			
01:22	20 DELPH A substitution in			
01:22				25 BREWER L substitution out
01:22				33 WEBER C substitution out
01:22				0 ADHEKE S substitution in
01:22				23 PATTERSON V substitution in
01:11	25 LEWIS JR. J 2pt FG in the paint, hook shot missed			
01:07				23 PATTERSON V defensive rebound (2)
00:55				0 ADHEKE S 2pt FG in the paint, hook shot missed
00:50	23 HARCUM T defensive rebound (1)			
00:45	25 LEWIS JR. J foul drawn (4)			2 KING J foul personal (1 - 7)
00:42				1 YASSER M substitution out
00:42				2 KING J substitution out
00:42				20 CHARLES K substitution out
00:42				4 SLOAN D substitution in
00:42				14 BREWER T substitution in
00:42				25 BREWER L substitution in
00:42	25 LEWIS JR. J 1&1 free throw 1 missed			
00:42				0 ADHEKE S defensive rebound (2)
00:39				25 BREWER L 3pt FG , jump shot missed
00:33	25 LEWIS JR. J defensive rebound (5)			
00:06	20 DELPH A 2pt FG in the paint, floating jump shot made (9)	<b>28-33</b>	<b>-5</b>	
<b>END OF PERIOD</b>				
<b>APP 28-33 ETS</b>				



**ETSU at Appalachian St.**

11/12/21 Holmes Convocation Center, Boone  
ETSU at App State

Game Time: 6:30 PM  
Game Duration: 1:48  
Attendance: 3,401

Officials: Sean Cassady, Gerald Williams, Landon Brandes

**ETSU - 33**

NO.	Name	F	Min	FG			Rebounds			Fouls		TP	AS	TO	ST	Blocks		+/-
				M-A	M-A	M-A	OR	DR	TOT	PF	FD					BS	BA	
0	Silas Adheke	F	11:05	1-3	0-0	0-0	0	2	2	0	0	2	0	0	0	0	0	-6
14	Ty Brewer	F	13:53	1-3	1-2	0-0	0	3	3	0	0	3	0	0	0	0	0	0
2	Jordan King	G	13:57	0-4	0-4	0-0	0	2	2	1	3	0	3	1	0	0	0	-3
4	David Sloan	G	14:19	2-4	2-3	0-0	1	0	1	1	2	6	5	0	0	0	0	4
25	Ledarius Brewer	G	15:29	3-10	1-5	0-0	2	1	3	0	0	7	1	0	0	0	0	0
23	Vonnie Patterson		09:38	3-3	2-2	0-0	0	2	2	1	0	8	0	1	1	0	0	9
33	Charlie Weber		08:55	0-0	0-0	0-0	0	1	1	2	0	0	0	0	0	0	0	11
1	Mohab Yasser		06:37	1-2	0-1	0-0	0	0	0	1	0	2	0	0	0	0	0	5
22	Jaden Seymour		02:56	0-1	0-1	0-0	0	0	0	1	0	0	0	0	0	0	0	1
20	Kordell Charles		03:11	2-2	1-1	0-0	1	0	1	0	0	5	0	1	1	0	0	4
Team							0	0	0			0		0				
<b>Totals</b>				13-32	7-19	0-0	4	11	15	7	5	33	9	3	2	0	0	5

Shooting By Period		
1st FG%	13-32	40.6%
3PT%	7-19	36.8%
FT%	0-0	0%
GM FG%	13-32	40.6%
3PT%	7-19	36.8%
FT%	0-0	0.0%

Dead Ball Rebounds: 0, 2

Technical Fouls::NONE

**Appalachian St. - 28**

NO.	Name	F	Min	FG			Rebounds			Fouls		TP	AS	TO	ST	Blocks		+/-
				M-A	M-A	M-A	OR	DR	TOT	PF	FD					BS	BA	
25	James Lewis Jr.	F	11:34	0-2	0-0	1-3	1	4	5	0	4	1	0	0	0	0	0	2
1	Justin Forrest	G	03:17	0-0	0-0	0-0	0	0	0	3	0	0	2	1	0	0	0	5
5	Michael Almonacy	G	18:14	2-4	2-3	0-0	0	2	2	0	0	6	1	0	0	0	0	-5
11	Donovan Gregory	G	11:12	4-7	0-1	0-0	2	1	3	1	0	8	1	1	1	0	0	3
20	Adrian Delph	G	17:30	3-9	1-4	2-2	0	3	3	1	1	9	1	2	0	0	0	-5
23	Terence Harcum		10:37	1-1	0-0	0-0	0	1	1	0	0	2	1	0	0	0	0	1
4	RJ Duhart		07:21	1-1	0-0	0-0	0	0	0	0	1	2	0	1	1	0	0	-11
10	Michael Eads Jr.		06:04	0-0	0-0	0-0	0	2	2	0	1	0	0	0	0	0	0	-6
15	CJ Huntley		09:53	0-1	0-1	0-0	1	1	2	0	0	0	0	0	0	0	0	-4
2	Christopher Mantis		04:18	0-2	0-2	0-0	0	0	0	0	0	0	1	0	0	0	0	-5
Team							0	0	0			0		0				
<b>Totals</b>				11-27	3-11	3-5	4	14	18	5	7	28	7	5	2	0	0	-5

Shooting By Period		
1st FG%	11-27	40.7%
3PT%	3-11	27.3%
FT%	3-5	60%
GM FG%	11-27	40.7%
3PT%	3-11	27.3%
FT%	3-5	60.0%

Dead Ball Rebounds: 1, 1

Technical Fouls::NONE

	ETS	APP
Biggest lead	10 (1st 8:20)	7 (1st 16:36)
Best Scoring Run	8(1st 12:50)	9(1st 16:36)
Lead Changes	2	
Times Tied	2	
Time with Lead	12:57	06:02

Points from	ETS	APP
Turnovers	2	2
Paint	10	12
Second Chance	4	6
Fast Breaks	8	5
Bench	15	4

	Period by Period Scoring		
	1st	2nd	TOT
ETS	33	34	67
APP	28	41	69



**Period 2**

**Quarter Starters:**

<b>APP</b>	5 Almonacy M	11 Gregory D	20 Delph A	23 Harcum T	25 Lewis Jr. J
<b>ETS</b>	0 Adheke S	2 King J	4 Sloan D	14 Brewer T	25 Brewer L

Game Time	APP	Score	Diff	ETS
20:00	15 HUNTLEY C substitution out			
20:00	11 GREGORY D substitution in			
20:00				23 PATTERSON V substitution out
20:00				2 KING J substitution in
19:47	23 HARCUM T 3pt FG , jump shot missed			
19:37	25 LEWIS JR. J offensive rebound (6)			
19:37	25 LEWIS JR. J 2pt FG second chance in the paint, layup missed			
19:37				14 BREWER T defensive rebound (4)
19:34		<b>28-35</b>	<b>-7</b>	4 SLOAN D 2pt FG outside the paint, jump shot made (8)
19:34				14 BREWER T assist (1)
19:00	11 GREGORY D 2pt FG in the paint, jump shot made (10)	<b>30-35</b>	<b>-5</b>	
19:00	25 LEWIS JR. J assist (1)			
18:47				14 BREWER T 3pt FG , jump shot missed
18:43	5 ALMONACY M defensive rebound (3)			
18:30	20 DELPH A 3pt FG , jump shot missed			
18:27				2 KING J defensive rebound (3)
18:13		<b>30-37</b>	<b>-7</b>	0 ADHEKE S 2pt FG in the paint, layup made (4)
18:13				4 SLOAN D assist (6)
17:55	20 DELPH A 3pt FG , jump shot made (12)	<b>33-37</b>	<b>-4</b>	
17:55	5 ALMONACY M assist (2)			
17:33				25 BREWER L 2pt FG in the paint, jump shot missed
17:29	20 DELPH A defensive rebound (4)			
17:24	20 DELPH A 2pt FG in the paint, jump shot blocked			
17:24				25 BREWER L block (1)
17:20	25 LEWIS JR. J offensive rebound (7)			
17:20	25 LEWIS JR. J 2pt FG second chance in the paint, layup made (3)	<b>35-37</b>	<b>-2</b>	
17:20	25 LEWIS JR. J foul drawn (5)			0 ADHEKE S foul shooting (1 - 1)
17:20				0 ADHEKE S substitution out
17:20				33 WEBER C substitution in
17:20	25 LEWIS JR. J free throw 1 - 1 made (4)	<b>36-37</b>	<b>-1</b>	
17:20	25 LEWIS JR. J substitution out			
17:20	15 HUNTLEY C substitution in			
17:04		<b>36-39</b>	<b>-3</b>	14 BREWER T 2pt FG outside the paint, jump shot made (5)
17:04				33 WEBER C assist (1)
16:32	11 GREGORY D turnover bad pass (2)			33 WEBER C steal (1)
16:21				33 WEBER C 2pt FG from turnover in the paint, jump shot missed
16:18	defensive rebound (23)			
16:18	11 GREGORY D substitution out			
16:18	10 EADS JR. M substitution in			
16:09	23 HARCUM T turnover bad pass (1)			
15:55				2 KING J 3pt FG from turnover, jump shot missed





**ETSU at Appalachian St.**

11/12/21 Holmes Convocation Center, Boone  
ETSU at App State

**Game Time:** 6:30 PM  
**Game Duration:** 1:48  
**Attendance:** 3,401

**Officials:** Sean Cassady, Gerald Williams, Landon Brandes

Game Time	APP	Score	Diff	ETS
15:50	10 EADS JR. M defensive rebound (3)			
15:45	5 ALMONACY M 3pt FG , jump shot missed			
15:42	20 DELPH A offensive rebound (5)			
15:38	jump ball situation			
15:38	20 DELPH A turnover lost ball (3)			14 BREWER T steal (1)
15:38	Timeout media			
15:38	23 HARCUM T substitution out			
15:38	1 FORREST J substitution in			
15:15				25 BREWER L 2pt FG from turnover outside the paint, jump shot missed
15:12				14 BREWER T offensive rebound (5)
15:11	10 EADS JR. M foul shooting (1 - 1)			14 BREWER T foul drawn (1)
15:11		<b>36-40</b>	<b>-4</b>	14 BREWER T free throw fast break 1 - 2 made (6)
15:11				2 KING J substitution out
15:11				23 PATTERSON V substitution in
15:11		<b>36-41</b>	<b>-5</b>	14 BREWER T free throw fast break 2 - 2 made (7)
15:01	10 EADS JR. M 3pt FG , jump shot made (3)	<b>39-41</b>	<b>-2</b>	
15:01	1 FORREST J assist (3)			
14:39	15 HUNTLEY C foul personal (1 - 2)			33 WEBER C foul drawn (1)
14:39				turnover shot clock (4)
14:01	5 ALMONACY M 3pt FG from turnover, jump shot made (9)	<b>42-41</b>	<b>1</b>	
14:01	1 FORREST J assist (4)			
13:34				25 BREWER L 3pt FG , jump shot missed
13:29	15 HUNTLEY C defensive rebound (3)			
13:21	20 DELPH A 2pt FG in the paint, jump shot missed			
13:17				14 BREWER T defensive rebound (6)
13:10		<b>42-43</b>	<b>-1</b>	25 BREWER L 2pt FG outside the paint, jump shot made (9)
13:10				4 SLOAN D assist (7)
12:49	10 EADS JR. M 3pt FG , jump shot made (6)	<b>45-43</b>	<b>2</b>	
12:49	5 ALMONACY M assist (3)			
12:17		<b>45-46</b>	<b>-1</b>	4 SLOAN D 3pt FG , step back jump shot made (11)
11:56	10 EADS JR. M 3pt FG , jump shot missed			
11:52				4 SLOAN D defensive rebound (2)
11:48		<b>45-48</b>	<b>-3</b>	4 SLOAN D 2pt FG fast break in the paint, driving layup made (13)
11:31	1 FORREST J 3pt FG , jump shot made (3)	<b>48-48</b>	<b>0</b>	
11:25	Timeout 30 Sec			
11:25	Timeout media			
11:25	5 ALMONACY M substitution out			
11:25	15 HUNTLEY C substitution out			
11:25	11 GREGORY D substitution in			
11:25	23 HARCUM T substitution in			
11:25				14 BREWER T substitution out
11:25				25 BREWER L substitution out
11:25				33 WEBER C substitution out
11:25				0 ADHEKE S substitution in
11:25				1 YASSER M substitution in
11:25				22 SEYMOUR J substitution in
11:00				4 SLOAN D 2pt FG in the paint, jump shot missed
10:56				0 ADHEKE S offensive rebound (3)



**ETSU at Appalachian St.**

11/12/21 Holmes Convocation Center, Boone  
ETSU at App State

**Game Time:** 6:30 PM  
**Game Duration:** 1:48  
**Attendance:** 3,401

**Officials:** Sean Cassady, Gerald Williams, Landon Brandes

Game Time	APP	Score	Diff	ETS
10:54		<b>48-51</b>	<b>-3</b>	23 PATTERSON V 3pt FG second chance, jump shot made (11)
10:54				0 ADHEKE S assist (1)
10:31	10 EADS JR. M 3pt FG , jump shot made (9)	<b>51-51</b>	<b>0</b>	
10:31	11 GREGORY D assist (2)			
10:05				22 SEYMOUR J 3pt FG , jump shot missed
10:01	20 DELPH A defensive rebound (6)			
09:57	20 DELPH A 2pt FG fast break in the paint, layup made (14)	<b>53-51</b>	<b>2</b>	
09:57	1 FORREST J assist (5)			
09:39				23 PATTERSON V 3pt FG , jump shot missed
09:36	20 DELPH A defensive rebound (7)			
09:29	1 FORREST J 3pt FG , jump shot missed			
09:25	11 GREGORY D offensive rebound (4)			
09:25	11 GREGORY D foul drawn (1)			0 ADHEKE S foul personal (2 - 2)
09:25	10 EADS JR. M substitution out			
09:25	25 LEWIS JR. J substitution in			
09:25				22 SEYMOUR J substitution out
09:25				14 BREWER T substitution in
09:25	11 GREGORY D 2pt FG second chance in the paint, driving layup missed			
09:25				14 BREWER T defensive rebound (7)
09:25				1 YASSER M 3pt FG , jump shot missed
09:25	11 GREGORY D defensive rebound (5)			
09:20	23 HARCUM T foul drawn (1)			1 YASSER M foul shooting (2 - 3)
09:15	23 HARCUM T free throw fast break 1 - 2 missed			
09:15	offensive dead ball rebound (3)			
09:15				4 SLOAN D substitution out
09:15				2 KING J substitution in
09:15	23 HARCUM T free throw fast break 2 - 2 missed			
09:15				23 PATTERSON V defensive rebound (3)
09:08				14 BREWER T 3pt FG , jump shot missed
09:02				1 YASSER M offensive rebound (1)
08:46	25 LEWIS JR. J foul personal (1 - 3)			1 YASSER M foul drawn (1)
08:46	23 HARCUM T substitution out			
08:46	5 ALMONACY M substitution in			
08:27		<b>53-53</b>	<b>0</b>	2 KING J 2pt FG second chance in the paint, driving layup made (2)
08:08	11 GREGORY D turnover bad pass (3)			0 ADHEKE S steal (1)
07:59				2 KING J 2pt FG from turnover in the paint, layup missed
07:56				0 ADHEKE S offensive rebound (4)
07:55				14 BREWER T 3pt FG from turnover second chance, jump shot missed
07:52	1 FORREST J defensive rebound (1)			
07:47	1 FORREST J foul offensive (4 - 4)			0 ADHEKE S foul drawn (1)
07:47	1 FORREST J turnover offensive (2)			
07:45	Timeout media			
07:45	1 FORREST J substitution out			
07:45	23 HARCUM T substitution in			
07:21				2 KING J 2pt FG from turnover in the paint, floating jump shot missed
07:14				1 YASSER M offensive rebound (2)



**ETSU at Appalachian St.**

11/12/21 Holmes Convocation Center, Boone  
ETSU at App State

**Game Time:** 6:30 PM  
**Game Duration:** 1:48  
**Attendance:** 3,401

**Officials:** Sean Cassady, Gerald Williams, Landon Brandes

Game Time	APP	Score	Diff	ETS
07:14		<b>53-55</b>	<b>-2</b>	1 YASSER M 2pt FG from turnover second chance in the paint, layup made (4)
06:47	25 LEWIS JR. J foul drawn (6)			14 BREWER T foul shooting (1 - 4)
06:46	25 LEWIS JR. J free throw 1 - 2 made (5)	<b>54-55</b>	<b>-1</b>	
06:46				1 YASSER M substitution out
06:46				25 BREWER L substitution in
06:46	25 LEWIS JR. J free throw 2 - 2 made (6)	<b>55-55</b>	<b>0</b>	
06:40		<b>55-57</b>	<b>-2</b>	25 BREWER L 2pt FG outside the paint, turnaround jump shot made (11)
06:18	23 HARCUM T 2pt FG in the paint, layup blocked			
06:18				0 ADHEKE S block (1)
06:17	offensive rebound (32)			
06:11	20 DELPH A 3pt FG second chance, jump shot made (17)	<b>58-57</b>	<b>1</b>	
06:11	11 GREGORY D assist (3)			
05:47				0 ADHEKE S turnover bad pass (1)
05:47	23 HARCUM T substitution out			
05:47	25 LEWIS JR. J substitution out			
05:47	1 FORREST J substitution in			
05:47	10 EADS JR. M substitution in			
05:21	11 GREGORY D turnover bad pass (4)			2 KING J steal (1)
05:14	11 GREGORY D steal (2)			2 KING J turnover bad pass (2)
05:10	11 GREGORY D 2pt FG fast break from turnover in the paint, dunk, made (12)	<b>60-57</b>	<b>3</b>	
04:40	20 DELPH A steal (1)			25 BREWER L turnover lost ball (1)
04:31	1 FORREST J turnover bad pass (3)			23 PATTERSON V steal (2)
04:31	10 EADS JR. M foul personal (2 - 5)			23 PATTERSON V foul drawn (1)
04:30	11 GREGORY D substitution out			
04:30	15 HUNTLEY C substitution in			
04:30				2 KING J substitution out
04:30				23 PATTERSON V substitution out
04:30				1 YASSER M substitution in
04:30				4 SLOAN D substitution in
04:20		<b>60-60</b>	<b>0</b>	14 BREWER T 3pt FG from turnover, jump shot made (10)
04:20				4 SLOAN D assist (8)
04:03	1 FORREST J foul drawn (1)			25 BREWER L foul shooting (1 - 5)
04:02	1 FORREST J free throw 1 - 2 made (4)	<b>61-60</b>	<b>1</b>	
04:02	1 FORREST J free throw 2 - 2 made (5)	<b>62-60</b>	<b>2</b>	
03:50	5 ALMONACY M foul shooting (1 - 6)			4 SLOAN D foul drawn (3)
03:49	Timeout media			
03:49	5 ALMONACY M substitution out			
03:49	15 HUNTLEY C substitution out			
03:49	11 GREGORY D substitution in			
03:49	23 HARCUM T substitution in			
03:49		<b>62-61</b>	<b>1</b>	4 SLOAN D free throw 1 - 2 made (14)
03:49				1 YASSER M substitution out
03:49				23 PATTERSON V substitution in
03:49		<b>62-62</b>	<b>0</b>	4 SLOAN D free throw 2 - 2 made (15)
03:28	1 FORREST J 3pt FG , jump shot missed			
03:24				25 BREWER L defensive rebound (4)
03:12				4 SLOAN D 3pt FG , jump shot missed



**ETSU at Appalachian St.**

11/12/21 Holmes Convocation Center, Boone  
ETSU at App State

**Game Time:** 6:30 PM  
**Game Duration:** 1:48  
**Attendance:** 3,401

**Officials:** Sean Cassady, Gerald Williams, Landon Brandes

Game Time	APP	Score	Diff	ETS
03:08	11 GREGORY D defensive rebound (6)			
02:46	1 FORREST J foul drawn (2)			23 PATTERSON V foul personal (2 - 6)
02:30	23 HARCUM T substitution out			
02:30	5 ALMONACY M substitution in			
02:29	20 DELPH A 2pt FG outside the paint, turnaround jump shot made (19)	<b>64-62</b>	<b>2</b>	
02:27	10 EADS JR. M foul personal (3 - 7)			0 ADHEKE S foul drawn (2)
02:27	10 EADS JR. M substitution out			
02:27	25 LEWIS JR. J substitution in			
02:27				23 PATTERSON V substitution out
02:27				2 KING J substitution in
02:27		<b>64-63</b>	<b>1</b>	0 ADHEKE S 1&1 free throw 1 made (5)
02:27				0 ADHEKE S 1&1 free throw 2 missed
02:27	5 ALMONACY M defensive rebound (4)			
02:08	1 FORREST J 2pt FG outside the paint, jump shot missed			
02:05	25 LEWIS JR. J offensive rebound (8)			
02:05	25 LEWIS JR. J foul drawn (7)			14 BREWER T foul personal (2 - 7)
02:05	25 LEWIS JR. J free throw 1 - 2 made (7)	<b>65-63</b>	<b>2</b>	
02:05	25 LEWIS JR. J free throw 2 - 2 missed			
02:05				14 BREWER T defensive rebound (8)
01:55				4 SLOAN D 3pt FG , jump shot missed
01:51	11 GREGORY D defensive rebound (7)			
01:24	1 FORREST J 3pt FG , jump shot missed			
01:21				2 KING J defensive rebound (4)
01:13		<b>65-65</b>	<b>0</b>	14 BREWER T 2pt FG in the paint, dunk, made (12)
01:13				2 KING J assist (4)
00:57	Timeout 30 Sec			
00:51	1 FORREST J foul drawn (3)			2 KING J foul personal (2 - 8)
00:51	1 FORREST J 1&1 free throw 1 made (6)	<b>66-65</b>	<b>1</b>	
00:51	1 FORREST J 1&1 free throw 2 made (7)	<b>67-65</b>	<b>2</b>	
00:47				Timeout 30 Sec
00:36		<b>67-67</b>	<b>0</b>	25 BREWER L 2pt FG in the paint, turnaround jump shot made (13)
00:32				Timeout 30 Sec
00:32				2 KING J substitution out
00:32				23 PATTERSON V substitution in
00:10	1 FORREST J foul drawn (4)			0 ADHEKE S foul personal (3 - 9)
00:10	1 FORREST J 1&1 free throw 1 made (8)	<b>68-67</b>	<b>1</b>	
00:10				Timeout 30 Sec
00:10	25 LEWIS JR. J substitution out			
00:10	15 HUNTLEY C substitution in			
00:10	1 FORREST J 1&1 free throw 2 made (9)	<b>69-67</b>	<b>2</b>	
00:10	Timeout 60 Sec			
00:10				23 PATTERSON V substitution out
00:10				2 KING J substitution in
00:04				14 BREWER T 3pt FG , jump shot missed
00:03	defensive dead ball rebound (4)			
00:03	15 HUNTLEY C substitution out			
00:03	25 LEWIS JR. J substitution in			

END OF GAME



Official Basketball Play by Play - Second Half

**ETSU at Appalachian St.**

11/12/21 Holmes Convocation Center, Boone  
ETSU at App State

**Game Time:** 6:30 PM

**Game Duration:** 1:48

**Attendance:** 3,401

**Officials:** Sean Cassady, Gerald Williams, Landon Brandes

Game Time	APP	Score	Diff	ETS
APP 69-67 ETS				



**ETSU at Appalachian St.**

11/12/21 Holmes Convocation Center, Boone  
ETSU at App State

Game Time: 6:30 PM  
Game Duration: 1:48  
Attendance: 3,401

Officials: Sean Cassady, Gerald Williams, Landon Brandes

**ETSU - 34**

NO.	Name	Min	FG	3P	FT	Rebounds			Fouls		TP	AS	TO	ST	Blocks		+/-
			M-A	M-A	M-A	OR	DR	TOT	PF	FD					BS	BA	
0	Silas Adheke	F 14:05	1-1	0-0	1-2	2	0	2	3	2	3	1	1	1	1	0	-5
14	Ty Brewer	F 18:00	3-7	1-5	2-2	1	4	5	2	1	9	1	0	1	0	0	-5
2	Jordan King	G 11:39	1-4	0-1	0-0	0	2	2	1	0	2	1	1	1	0	0	0
4	David Sloan	G 15:15	3-6	1-3	2-2	0	1	1	0	1	9	3	0	0	0	0	-6
25	Ledarius Brewer	G 15:21	3-6	0-1	0-0	0	1	1	1	0	6	0	1	0	1	0	-8
33	Charlie Weber	05:55	0-1	0-0	0-0	0	0	0	0	1	0	1	0	1	0	0	-2
23	Vonnie Patterson	12:25	1-2	1-2	0-0	0	1	1	1	1	3	0	0	1	0	0	-10
1	Mohab Yasser	05:20	1-2	0-1	0-0	2	0	2	1	1	2	0	0	0	0	0	3
22	Jaden Seymour	02:00	0-1	0-1	0-0	0	0	0	0	0	0	0	0	0	0	0	-2
Team						0	0	0			0		1				
<b>Totals</b>			13-30	3-14	5-6	5	9	14	9	7	34	7	4	5	2	0	-7

Shooting By Period		
2 <sup>nd</sup> FG%	13-30	43.3%
3PT%	3-14	21.4%
FT%	5-6	83.3%
GM FG%	13-30	43.3%
3PT%	3-14	21.4%
FT%	5-6	83.3%

Dead Ball Rebounds: 0, 0

Technical Fouls::NONE

**Appalachian St. - 41**

NO.	Name	Min	FG	3P	FT	Rebounds			Fouls		TP	AS	TO	ST	Blocks		+/-
			M-A	M-A	M-A	OR	DR	TOT	PF	FD					BS	BA	
25	James Lewis Jr.	F 08:39	1-2	0-0	4-5	3	0	3	1	3	6	1	0	0	0	0	2
1	Justin Forrest	G 13:40	1-5	1-4	6-6	0	1	1	1	4	9	3	2	0	0	0	4
5	Michael Almonacy	G 16:02	1-2	1-2	0-0	0	2	2	1	0	3	2	0	0	0	0	7
11	Donovan Gregory	G 14:26	2-3	0-0	0-0	1	3	4	0	1	4	2	3	1	0	0	5
20	Adrian Delph	G 20:00	4-7	2-3	0-0	1	3	4	0	0	10	0	1	1	0	1	7
15	CJ Huntley	06:42	0-0	0-0	0-0	0	1	1	1	0	0	0	0	0	0	0	1
10	Michael Eads Jr.	10:13	3-4	3-4	0-0	0	1	1	3	0	9	0	0	0	0	0	6
23	Terence Harcum	10:18	0-2	0-1	0-2	0	0	0	0	1	0	0	1	0	0	1	3
Team						1	1	2			0		0				
<b>Totals</b>			12-25	7-14	10-13	6	12	18	7	9	41	8	7	2	0	2	7

Shooting By Period		
2 <sup>nd</sup> FG%	12-25	48.0%
3PT%	7-14	50.0%
FT%	10-13	76.9%
GM FG%	12-25	48.0%
3PT%	7-14	50.0%
FT%	10-13	76.9%

Dead Ball Rebounds: 1, 1

Technical Fouls::NONE

	ETS	APP
Biggest lead	7 (2 <sup>nd</sup> 19:34)	3 (2 <sup>nd</sup> 5:10)
Best Scoring Run	5(2 <sup>nd</sup> 11:48)	6(2 <sup>nd</sup> 17:20)
Lead Changes	7	
Times Tied	8	
Time with Lead	08:13	06:38

Points from	ETS	APP
Turnovers	7	5
Paint	12	8
Second Chance	9	7
Fast Breaks	5	4
Bench	5	9

	Period by Period Scoring		
	1st	2nd	TOT
ETS	33	34	67
APP	28	41	69



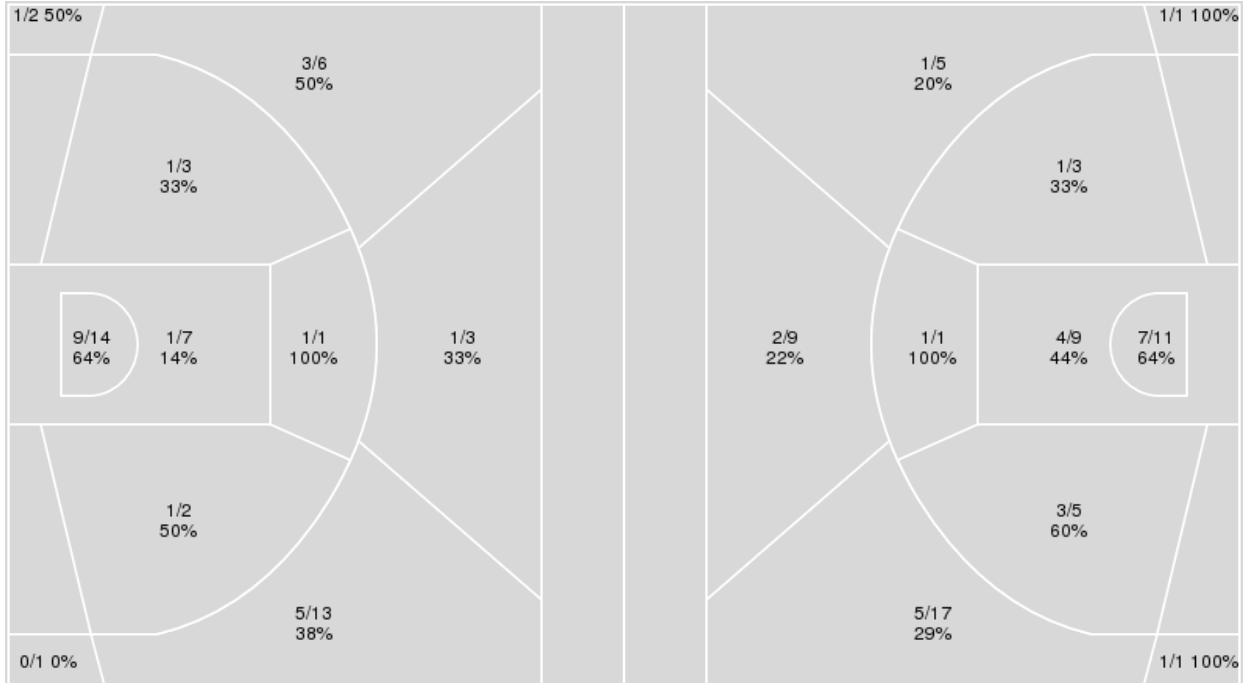
**Officials:** Sean Cassady, Gerald Williams, Landon Brandes

{ Players => All; } FG Types => All; Results => All;

{ Players => All; } FG Types => All; Results => All;

**Appalachian St.**

**ETSU**



Appalachian St.	M/A	%
Field Goals	23/52	44
2 Points	13/27	48
3 Points	10/25	40
Free Throws	13/18	72

ETSU	M/A	%
Field Goals	26/62	42
2 Points	16/29	55
3 Points	10/33	30
Free Throws	5/6	83



**ETSU at Appalachian St.**

11/12/21 Holmes Convocation Center, Boone  
ETSU at App State

**Game Time:** 6:30 PM  
**Game Duration:** 1:48  
**Attendance:** 3,401

**Officials:** Sean Cassady, Gerald Williams, Landon Brandes

**ETSU**

No	Name	Mins		Score		Points Diff		Points per Min		Assists		Rebounds		Steals		Turnovers	
		On	Off	On	Off	On	Off	On	Off	On	Off	On	Off	On	Off	On	Off
0	Silas Adheke	25:10	14:50	36 - 47	31 - 22	-11	9	1.43	2.09	9	7	21	8	3	4	4	3
1	Mohab Yasser	11:57	28:03	23 - 15	44 - 54	8	-10	1.92	1.57	5	11	10	19	3	4	2	5
2	Jordan King	25:36	14:24	35 - 38	32 - 31	-3	1	1.37	2.22	9	7	20	9	5	2	5	2
4	David Sloan	29:34	10:26	54 - 56	13 - 13	-2	0	1.83	1.25	14	2	21	8	4	3	3	4
14	Ty Brewer	31:53	08:07	52 - 57	15 - 12	-5	3	1.63	1.85	12	4	24	5	5	2	5	2
20	Kordell Charles	03:11	36:49	7 - 3	60 - 66	4	-6	2.20	1.63	1	15	3	26	2	5	1	6
22	Jaden Seymour	04:56	35:04	8 - 9	59 - 60	-1	-1	1.62	1.68	3	13	2	27	0	7	1	6
23	Vonnie Patterson	22:03	17:57	39 - 40	28 - 29	-1	-1	1.77	1.56	8	8	15	14	5	2	6	1
25	Ledarius Brewer	30:50	09:10	50 - 58	17 - 11	-8	6	1.62	1.85	12	4	21	8	4	3	5	2
33	Charlie Weber	14:50	25:10	31 - 22	36 - 47	9	-11	2.09	1.43	7	9	8	21	4	3	3	4

**Appalachian St.**

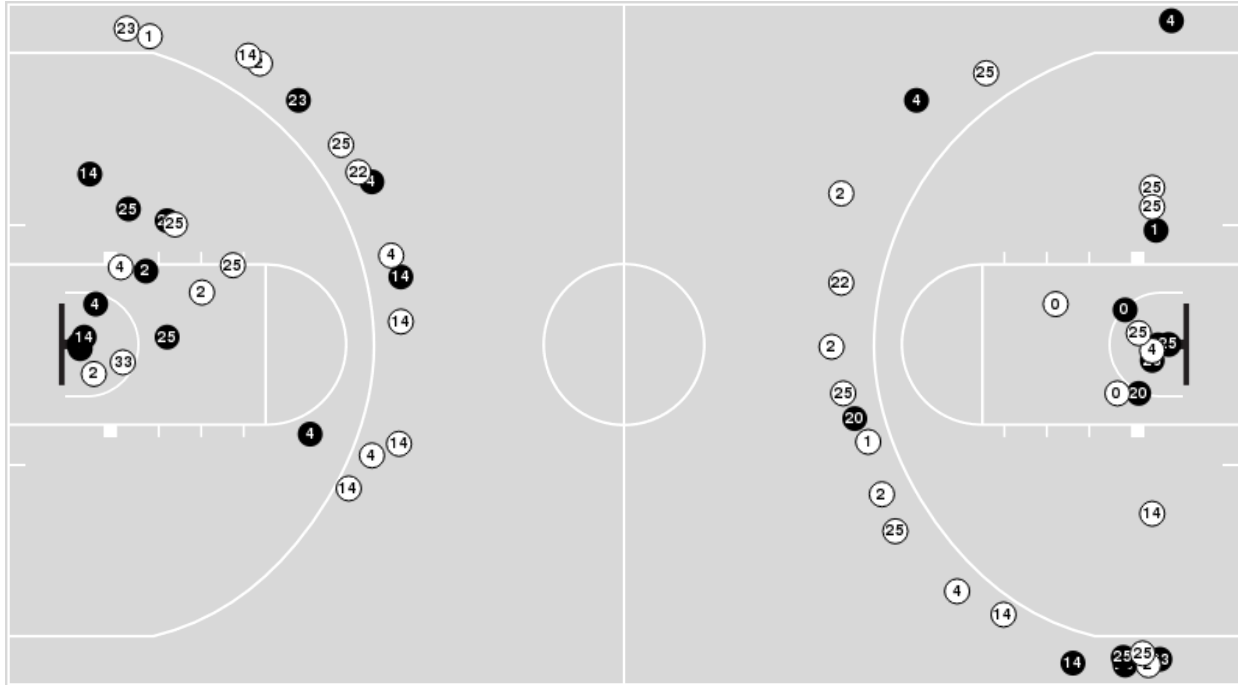
No	Name	Mins		Score		Points Diff		Points per Min		Assists		Rebounds		Steals		Turnovers	
		On	Off	On	Off	On	Off	On	Off	On	Off	On	Off	On	Off	On	Off
1	Justin Forrest	16:57	23:03	35 - 26	34 - 41	9	-7	2.06	1.48	7	8	12	24	2	2	5	7
2	Christopher Mantis	04:18	35:42	8 - 13	61 - 54	-5	7	1.86	1.71	2	13	3	33	2	2	2	10
4	RJ Duhart	07:21	32:39	7 - 18	62 - 49	-11	13	0.95	1.90	1	14	3	33	1	3	2	10
5	Michael Almonacy	34:16	05:44	62 - 60	7 - 7	2	0	1.81	1.22	13	2	30	6	4	0	12	0
10	Michael Eads Jr.	16:17	23:43	27 - 27	42 - 40	0	2	1.66	1.77	6	9	10	26	2	2	5	7
11	Donovan Gregory	25:38	14:22	45 - 37	24 - 30	8	-6	1.76	1.67	10	5	28	8	3	1	8	4
15	CJ Huntley	16:35	23:25	27 - 30	42 - 37	-3	5	1.63	1.79	6	9	13	23	0	4	5	7
20	Adrian Delph	37:30	02:30	67 - 65	2 - 2	2	0	1.79	0.80	14	1	35	1	4	0	12	0
23	Terence Harcum	20:55	19:05	31 - 27	38 - 40	4	-2	1.48	1.99	8	7	25	11	0	4	4	8
25	James Lewis Jr.	20:13	19:47	36 - 32	33 - 35	4	-2	1.78	1.67	8	7	21	15	2	2	5	7



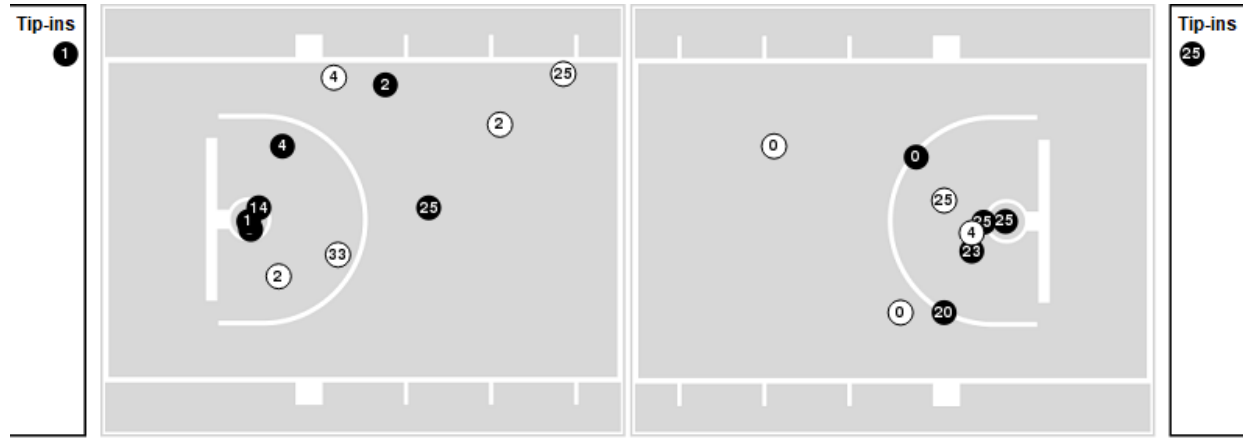


Players => AllFG Types=>AllResults=>All  
**ETSU**

**All Field Goals**



**Blow Up Chart**



● Made ○ Missed N - Player Number

ETSU	M/A	%
Field Goals	26/62	42
2 Points	16/29	55
3 Points	10/33	30
Free Throws	5/6	83

ETSU	M/A	%
Points in the Paint	22 (11 / 20)	55
Fast Break Points	13 (7/8)	88
Second Chance Points	13 (7/9)	78
Effective FG%	50	

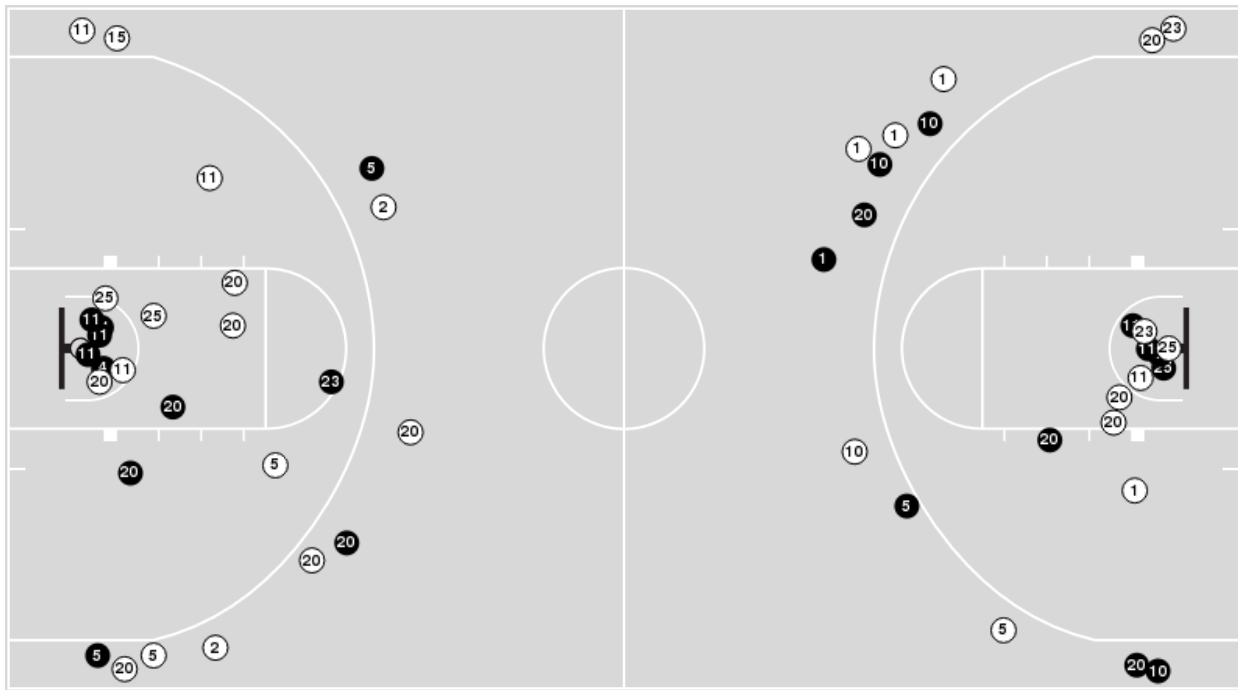


**Officials:** Sean Cassady, Gerald Williams, Landon Brandes

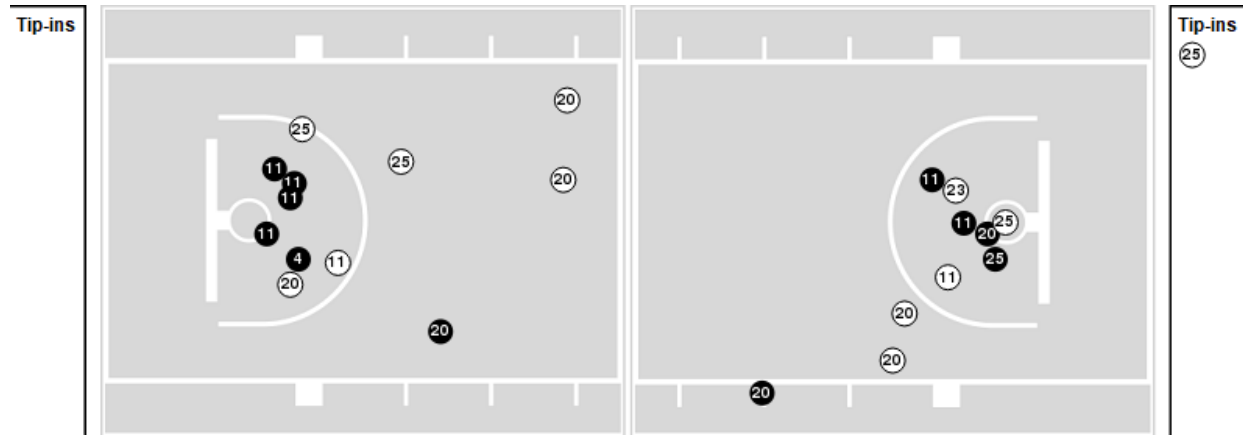
Players => AllFG Types=>AllResults=>All

**Appalachian St.**

**All Field Goals**



**Blow Up Chart**



● Made    ○ Missed    N - Player Number

Appalachian St.	M/A	%
Field Goals	23/52	44
2 Points	13/27	48
3 Points	10/25	40
Free Throws	13/18	72

Appalachian St.	M/A	%
Points in the Paint	20 (10 / 21)	48
Fast Break Points	9 (4/6)	67
Second Chance Points	13 (7/11)	64
Effective FG%	54	



**ETSU at Appalachian St.**

11/12/21 Holmes Convocation Center, Boone  
ETSU at App State

**Game Time:** 6:30 PM  
**Game Duration:** 1:48  
**Attendance:** 3,401

**Officials:** Sean Cassidy, Gerald Williams, Landon Brandes

**ETSU**

Lineup	Quarter On	Time On	Quarter Off	Time Off	Time on Court	Score	Score Diff	Reb	Stl	Tov	Ass	PPP
0- Adheke S/ 2- King J/ 4- Sloan D/ 14- Brewer T/ 25- Brewer L/	1	20:00	1	15:51	04:09	5-9	-4	3	0	0	2	0.8333
0- Adheke S/ 4- Sloan D/ 14- Brewer T/ 23- Patterson V/ 25- Brewer L/	1	15:51	1	15:27	00:24	0-0	0	0	0	0	0	0.0000
4- Sloan D/ 14- Brewer T/ 23- Patterson V/ 25- Brewer L/ 33- Weber C/	1	15:27	1	12:30	02:57	8-2	6	2	0	0	2	2.0000
1- Yasser M/ 2- King J/ 22- Seymour J/ 23- Patterson V/ 33- Weber C/	1	12:30	1	09:34	02:56	5-4	1	1	0	1	2	1.0000
1- Yasser M/ 4- Sloan D/ 20- Charles K/ 23- Patterson V/ 33- Weber C/	1	09:34	1	08:38	00:56	5-1	4	0	2	1	1	1.6667
0- Adheke S/ 4- Sloan D/ 14- Brewer T/ 23- Patterson V/ 25- Brewer L/	1	08:38	1	07:35	01:03	3-3	0	1	0	0	1	3.0000
0- Adheke S/ 2- King J/ 4- Sloan D/ 14- Brewer T/ 25- Brewer L/	1	07:35	1	03:28	04:07	5-5	0	4	0	1	1	0.7143
1- Yasser M/ 2- King J/ 14- Brewer T/ 25- Brewer L/ 33- Weber C/	1	03:28	1	02:58	00:30	0-0	0	0	0	0	0	0.0000
1- Yasser M/ 2- King J/ 20- Charles K/ 25- Brewer L/ 33- Weber C/	1	02:58	1	01:22	01:36	2-2	0	2	0	0	0	1.0000
0- Adheke S/ 1- Yasser M/ 2- King J/ 20- Charles K/ 23- Patterson V/	1	01:22	1	00:42	00:39	0-0	0	1	0	0	0	0.0000
0- Adheke S/ 4- Sloan D/ 14- Brewer T/ 23- Patterson V/ 25- Brewer L/	1	00:42	2	20:00	00:43	0-2	-2	1	0	0	0	0.0000
0- Adheke S/ 2- King J/ 4- Sloan D/ 14- Brewer T/ 25- Brewer L/	2	20:00	2	17:20	02:40	4-7	-3	2	0	0	2	1.0000
2- King J/ 4- Sloan D/ 14- Brewer T/ 25- Brewer L/ 33- Weber C/	2	17:20	2	15:11	02:09	3-1	2	1	2	0	1	0.8721
4- Sloan D/ 14- Brewer T/ 23- Patterson V/ 25- Brewer L/ 33- Weber C/	2	15:11	2	11:25	03:46	8-12	-4	2	0	1	1	1.4706
0- Adheke S/ 1- Yasser M/ 4- Sloan D/ 22- Seymour J/ 23- Patterson V/	2	11:25	2	09:25	02:00	3-5	-2	1	0	0	1	1.0000
0- Adheke S/ 1- Yasser M/ 4- Sloan D/ 14- Brewer T/ 23- Patterson V/	2	09:25	2	09:15	00:10	0-0	0	1	0	0	0	0.0000
0- Adheke S/ 1- Yasser M/ 2- King J/ 14- Brewer T/ 23- Patterson V/	2	09:15	2	06:46	02:29	4-1	3	4	1	0	0	1.3333
0- Adheke S/ 2- King J/ 14- Brewer T/ 23- Patterson V/ 25- Brewer L/	2	06:46	2	04:30	02:16	2-6	-4	0	2	3	0	0.5000
0- Adheke S/ 1- Yasser M/ 4- Sloan D/ 14- Brewer T/ 25- Brewer L/	2	04:30	2	03:49	00:41	4-2	2	0	0	0	1	2.7778
0- Adheke S/ 4- Sloan D/ 14- Brewer T/ 23- Patterson V/ 25- Brewer L/	2	03:49	2	02:27	01:22	1-2	-1	1	0	0	0	0.6944
0- Adheke S/ 2- King J/ 4- Sloan D/ 14- Brewer T/ 25- Brewer L/	2	02:27	2	00:32	01:55	5-3	2	2	0	0	1	1.2887
0- Adheke S/ 4- Sloan D/ 14- Brewer T/ 23- Patterson V/ 25- Brewer L/	2	00:32	2	00:10	00:22	0-2	-2	0	0	0	0	0.0000
0- Adheke S/ 2- King J/ 4- Sloan D/ 14- Brewer T/ 25- Brewer L/	2	00:10	2	00:00	00:10	0-0	0	0	0	0	0	0.0000



**ETSU at Appalachian St.**

11/12/21 Holmes Convocation Center, Boone  
ETSU at App State

**Game Time:** 6:30 PM  
**Game Duration:** 1:48  
**Attendance:** 3,401

**Officials:** Sean Cassidy, Gerald Williams, Landon Brandes

**Appalachian St.**

Lineup	Quarter On	Time On	Quarter Off	Time Off	Time on Court	Score	Score Diff	Reb	Stl	Tov	Ass	PPP
1- Forrest J/ 5- Almonacy M/ 11- Gregory D/ 20- Delph A/ 25- Lewis Jr. J/	1	20:00	1	17:46	02:14	7-2	5	2	0	0	2	2.3333
5- Almonacy M/ 11- Gregory D/ 20- Delph A/ 23- Harcum T/ 25- Lewis Jr. J/	1	17:46	1	16:49	00:57	0-0	0	2	0	0	0	0.0000
4- Duhart R/ 5- Almonacy M/ 11- Gregory D/ 20- Delph A/ 23- Harcum T/	1	16:49	1	15:51	00:58	2-3	-1	1	0	0	0	1.0000
1- Forrest J/ 4- Duhart R/ 10- Eads Jr. M/ 15- Huntley C/ 23- Harcum T/	1	15:51	1	15:27	00:24	0-0	0	0	0	0	0	0.0000
4- Duhart R/ 10- Eads Jr. M/ 15- Huntley C/ 20- Delph A/ 23- Harcum T/	1	15:27	1	14:05	01:22	2-2	0	1	0	0	0	1.0000
4- Duhart R/ 5- Almonacy M/ 10- Eads Jr. M/ 15- Huntley C/ 20- Delph A/	1	14:05	1	12:30	01:35	0-6	-6	0	0	0	0	0.0000
5- Almonacy M/ 10- Eads Jr. M/ 11- Gregory D/ 20- Delph A/ 25- Lewis Jr. J/	1	12:30	1	11:53	00:37	0-0	0	1	0	1	0	0.0000
2- Mantis C/ 5- Almonacy M/ 11- Gregory D/ 20- Delph A/ 25- Lewis Jr. J/	1	11:53	1	09:34	02:19	4-5	-1	2	1	0	1	1.7241
2- Mantis C/ 4- Duhart R/ 5- Almonacy M/ 20- Delph A/ 25- Lewis Jr. J/	1	09:34	1	08:38	00:56	1-5	-4	0	1	2	0	0.4098
2- Mantis C/ 5- Almonacy M/ 15- Huntley C/ 20- Delph A/ 25- Lewis Jr. J/	1	08:38	1	07:35	01:03	3-3	0	1	0	0	1	1.5000
1- Forrest J/ 5- Almonacy M/ 11- Gregory D/ 15- Huntley C/ 20- Delph A/	1	07:35	1	06:56	00:39	0-0	0	0	0	1	0	0.0000
5- Almonacy M/ 11- Gregory D/ 15- Huntley C/ 20- Delph A/ 23- Harcum T/	1	06:56	1	03:28	03:28	5-5	0	5	0	1	2	0.8333
4- Duhart R/ 5- Almonacy M/ 10- Eads Jr. M/ 23- Harcum T/ 25- Lewis Jr. J/	1	03:28	1	01:22	02:06	2-2	0	1	0	0	1	1.0000
5- Almonacy M/ 15- Huntley C/ 20- Delph A/ 23- Harcum T/ 25- Lewis Jr. J/	1	01:22	2	20:00	01:22	2-0	2	2	0	0	0	0.8197
5- Almonacy M/ 11- Gregory D/ 20- Delph A/ 23- Harcum T/ 25- Lewis Jr. J/	2	20:00	2	17:20	02:40	8-4	4	4	0	0	2	1.4706
5- Almonacy M/ 11- Gregory D/ 15- Huntley C/ 20- Delph A/ 23- Harcum T/	2	17:20	2	16:18	01:02	0-2	-2	1	0	1	0	0.0000
5- Almonacy M/ 10- Eads Jr. M/ 15- Huntley C/ 20- Delph A/ 23- Harcum T/	2	16:18	2	15:38	00:40	0-0	0	2	0	2	0	0.0000
1- Forrest J/ 5- Almonacy M/ 10- Eads Jr. M/ 15- Huntley C/ 20- Delph A/	2	15:38	2	11:25	04:13	12-9	3	1	0	0	3	2.0000
1- Forrest J/ 10- Eads Jr. M/ 11- Gregory D/ 20- Delph A/ 23- Harcum T/	2	11:25	2	09:25	02:00	5-3	2	3	0	0	2	2.5000
1- Forrest J/ 11- Gregory D/ 20- Delph A/ 23- Harcum T/ 25- Lewis Jr. J/	2	09:25	2	08:46	00:39	0-0	0	1	0	0	0	0.0000
1- Forrest J/ 5- Almonacy M/ 11- Gregory D/ 20- Delph A/ 25- Lewis Jr. J/	2	08:46	2	07:45	01:01	0-2	-2	1	0	2	0	0.0000
5- Almonacy M/ 11- Gregory D/ 20- Delph A/ 23- Harcum T/ 25- Lewis Jr. J/	2	07:45	2	05:47	01:58	5-4	1	1	0	0	1	2.6596
1- Forrest J/ 5- Almonacy M/ 10- Eads Jr. M/ 11- Gregory D/ 20- Delph A/	2	05:47	2	04:30	01:17	2-0	2	0	2	2	0	0.6667
1- Forrest J/ 5- Almonacy M/ 10- Eads Jr. M/ 15- Huntley C/ 20- Delph A/	2	04:30	2	03:49	00:41	2-3	-1	0	0	0	0	2.2727
1- Forrest J/ 10- Eads Jr. M/ 11- Gregory D/ 20- Delph A/ 23- Harcum T/	2	03:49	2	02:30	01:19	0-2	-2	1	0	0	0	0.0000
1- Forrest J/ 5- Almonacy M/ 10- Eads Jr. M/ 11- Gregory D/ 20- Delph A/	2	02:30	2	02:27	00:03	2-0	2	0	0	0	0	2.0000
1- Forrest J/ 5- Almonacy M/ 11- Gregory D/ 20- Delph A/ 25- Lewis Jr. J/	2	02:27	2	00:10	02:17	4-5	-1	3	0	0	0	1.2500
1- Forrest J/ 5- Almonacy M/ 11- Gregory D/ 15- Huntley C/ 20- Delph A/	2	00:10	2	00:03	00:06	1-0	1	0	0	0	0	2.2727
1- Forrest J/ 5- Almonacy M/ 11- Gregory D/ 20- Delph A/ 25- Lewis Jr. J/	2	00:03	2	00:00	00:04	0-0	0	0	0	0	0	0.0000



**ETSU at Appalachian St.**

11/12/21 Holmes Convocation Center, Boone  
ETSU at App State

**Game Time:** 6:30 PM

**Game Duration:** 1:48

**Attendance:** 3,401

**Officials:** Sean Cassady, Gerald Williams, Landon Brandes

**ETSU**

Lineup	Time	Score	Score Diff	Pts/Min	Reb	Stl	Tov	Ass	PPP
0- Adheke S/ 2- King J/ 4- Sloan D/ 14- Brewer T/ 25- Brewer L/	13:01	19-24	-5	1.4597	11	0	1	6	0.8684
4- Sloan D/ 14- Brewer T/ 23- Patterson V/ 25- Brewer L/ 33- Weber C/	06:43	16-14	2	2.3821	4	0	1	3	1.6949
0- Adheke S/ 4- Sloan D/ 14- Brewer T/ 23- Patterson V/ 25- Brewer L/	03:54	4-9	-5	1.0256	3	0	0	1	1.1628
1- Yasser M/ 2- King J/ 22- Seymour J/ 23- Patterson V/ 33- Weber C/	02:56	5-4	1	1.7045	1	0	1	2	1.0000
0- Adheke S/ 1- Yasser M/ 2- King J/ 14- Brewer T/ 23- Patterson V/	02:29	4-1	3	1.6107	4	1	0	0	1.3333
0- Adheke S/ 2- King J/ 14- Brewer T/ 23- Patterson V/ 25- Brewer L/	02:16	2-6	-4	0.8824	0	2	3	0	0.5000
2- King J/ 4- Sloan D/ 14- Brewer T/ 25- Brewer L/ 33- Weber C/	02:09	3-1	2	1.3953	1	2	0	1	0.8721
0- Adheke S/ 1- Yasser M/ 4- Sloan D/ 22- Seymour J/ 23- Patterson V/	02:00	3-5	-2	1.5000	1	0	0	1	1.0000
1- Yasser M/ 2- King J/ 20- Charles K/ 25- Brewer L/ 33- Weber C/	01:36	2-2	0	1.2500	2	0	0	0	1.0000
1- Yasser M/ 4- Sloan D/ 20- Charles K/ 23- Patterson V/ 33- Weber C/	00:56	5-1	4	5.3571	0	2	1	1	1.6667
0- Adheke S/ 1- Yasser M/ 4- Sloan D/ 14- Brewer T/ 25- Brewer L/	00:41	4-2	2	5.8537	0	0	0	1	2.7778
0- Adheke S/ 1- Yasser M/ 2- King J/ 20- Charles K/ 23- Patterson V/	00:39	0-0	0	0.0000	1	0	0	0	0.0000
1- Yasser M/ 2- King J/ 14- Brewer T/ 25- Brewer L/ 33- Weber C/	00:30	0-0	0	0.0000	0	0	0	0	0.0000
0- Adheke S/ 1- Yasser M/ 4- Sloan D/ 14- Brewer T/ 23- Patterson V/	00:10	0-0	0	0.0000	1	0	0	0	0.0000



**ETSU at Appalachian St.**

11/12/21 Holmes Convocation Center, Boone  
ETSU at App State

**Game Time:** 6:30 PM

**Game Duration:** 1:48

**Attendance:** 3,401

**Officials:** Sean Cassady, Gerald Williams, Landon Brandes

**Appalachian St.**

Lineup	Time	Score	Score Diff	Pts/Min	Reb	Stl	Tov	Ass	PPP
1- Forrest J/ 5- Almonacy M/ 11- Gregory D/ 20- Delph A/ 25- Lewis Jr. J/	05:36	11-9	2	1.9643	6	0	2	2	1.3415
5- Almonacy M/ 11- Gregory D/ 20- Delph A/ 23- Harcum T/ 25- Lewis Jr. J/	05:35	13-8	5	2.3284	7	0	0	3	1.3948
1- Forrest J/ 5- Almonacy M/ 10- Eads Jr. M/ 15- Huntley C/ 20- Delph A/	04:54	14-12	2	2.8571	1	0	0	3	2.0349
5- Almonacy M/ 11- Gregory D/ 15- Huntley C/ 20- Delph A/ 23- Harcum T/	04:30	5-7	-2	1.1111	6	0	2	2	0.7143
1- Forrest J/ 10- Eads Jr. M/ 11- Gregory D/ 20- Delph A/ 23- Harcum T/	03:19	5-5	0	1.5075	4	0	0	2	1.6667
2- Mantis C/ 5- Almonacy M/ 11- Gregory D/ 20- Delph A/ 25- Lewis Jr. J/	02:19	4-5	-1	1.7266	2	1	0	1	1.7241
4- Duhart R/ 5- Almonacy M/ 10- Eads Jr. M/ 23- Harcum T/ 25- Lewis Jr. J/	02:06	2-2	0	0.9524	1	0	0	1	1.0000
4- Duhart R/ 5- Almonacy M/ 10- Eads Jr. M/ 15- Huntley C/ 20- Delph A/	01:35	0-6	-6	0.0000	0	0	0	0	0.0000
4- Duhart R/ 10- Eads Jr. M/ 15- Huntley C/ 20- Delph A/ 23- Harcum T/	01:22	2-2	0	1.4634	1	0	0	0	1.0000
5- Almonacy M/ 15- Huntley C/ 20- Delph A/ 23- Harcum T/ 25- Lewis Jr. J/	01:22	2-0	2	1.4634	2	0	0	0	0.8197
1- Forrest J/ 5- Almonacy M/ 10- Eads Jr. M/ 11- Gregory D/ 20- Delph A/	01:20	4-0	4	3.0000	0	2	2	0	1.0000
2- Mantis C/ 5- Almonacy M/ 15- Huntley C/ 20- Delph A/ 25- Lewis Jr. J/	01:03	3-3	0	2.8571	1	0	0	1	1.5000
4- Duhart R/ 5- Almonacy M/ 11- Gregory D/ 20- Delph A/ 23- Harcum T/	00:58	2-3	-1	2.0690	1	0	0	0	1.0000
2- Mantis C/ 4- Duhart R/ 5- Almonacy M/ 20- Delph A/ 25- Lewis Jr. J/	00:56	1-5	-4	1.0714	0	1	2	0	0.4098
1- Forrest J/ 5- Almonacy M/ 11- Gregory D/ 15- Huntley C/ 20- Delph A/	00:45	1-0	1	1.3333	0	0	1	0	0.6944
5- Almonacy M/ 10- Eads Jr. M/ 15- Huntley C/ 20- Delph A/ 23- Harcum T/	00:40	0-0	0	0.0000	2	0	2	0	0.0000
1- Forrest J/ 11- Gregory D/ 20- Delph A/ 23- Harcum T/ 25- Lewis Jr. J/	00:39	0-0	0	0.0000	1	0	0	0	0.0000
5- Almonacy M/ 10- Eads Jr. M/ 11- Gregory D/ 20- Delph A/ 25- Lewis Jr. J/	00:37	0-0	0	0.0000	1	0	1	0	0.0000
1- Forrest J/ 4- Duhart R/ 10- Eads Jr. M/ 15- Huntley C/ 23- Harcum T/	00:24	0-0	0	0.0000	0	0	0	0	0.0000