



**Furman at ETSU**

01/23/21 Freedom Hall, Johnson City  
2020-21 Men's Basketball

Game Time: 4:00 PM  
Game Duration: 2:02  
Attendance: 720

Officials: Nathan Quick, Arthur Valk, Byron Evans

Furman - 62

Record: 10-5 (4-2)

NO.	Name	F	Min	FG			3P			FT			Rebounds			Fouls		TP	AS	TO	ST	Blocks		+/-
				M-A	M-A	M-A	OR	DR	TOT	PF	FD	BS	BA											
4	Noah Gurley	F	31:45	6-12	1-4	0-1	1	2	3	5	2	13	3	2	1	0	0	6						
20	Jalen Slawson	F	23:54	0-3	0-1	0-2	1	1	2	4	3	0	3	2	0	0	2	-20						
45	Clay Mounce	F	35:32	8-17	3-11	2-2	3	9	12	1	2	21	2	0	1	1	0	2						
3	Mike Bothwell	G	38:09	6-17	3-9	2-2	1	1	2	4	2	17	1	2	1	0	0	-6						
10	Alex Hunter	G	35:06	3-6	1-4	0-0	1	3	4	2	1	7	4	2	0	0	0	-4						
1	Jaylon Pugh		02:23	0-0	0-0	0-0	0	0	0	0	1	0	0	0	0	0	0	-7						
13	Garrett Hien		06:10	2-2	0-0	0-0	2	0	2	1	0	4	0	0	0	0	0	-13						
22	Joe Anderson		21:33	0-2	0-2	0-0	0	1	1	2	0	0	1	1	0	0	0	1						
5	Marcus Foster		04:06	0-0	0-0	0-0	0	0	0	0	1	0	0	1	0	0	0	-4						
2	Colin Kenney		01:22	0-1	0-0	0-0	0	0	0	0	0	0	0	0	1	0	0	0						
Team							1	3	4			0		1										
<b>Totals</b>				25-60	8-31	4-7	10	20	30	19	12	62	14	11	4	1	2	-9						

Shooting By Period		
1st FG%	13-28	46.4%
3PT%	3-11	27.3%
FT%	0-1	0%
2nd FG%	12-32	37.5%
3PT%	5-20	25.0%
FT%	4-6	66.7%
GM FG%	25-60	41.7%
3PT%	8-31	25.8%
FT%	4-7	57.1%

Dead Ball Rebounds: 1, 0

Technical Fouls::NONE

ETSU - 71

Record: 9-5 (5-1)

NO.	Name	F	Min	FG			3P			FT			Rebounds			Fouls		TP	AS	TO	ST	Blocks		+/-
				M-A	M-A	M-A	OR	DR	TOT	PF	FD	BS	BA											
0	Silas Adheke	F	34:41	4-9	0-0	6-8	2	7	9	1	5	14	0	2	1	0	0	3						
23	Vonnie Patterson	F	26:15	0-4	0-2	0-0	4	3	7	1	2	0	2	2	2	1	0	-10						
1	Serrel Smith Jr.	G	19:35	0-3	0-2	0-0	0	1	1	0	1	0	1	0	0	1	0	-9						
12	Damari Monsanto	G	33:12	8-14	6-8	0-0	2	6	8	1	1	22	0	0	0	0	0	5						
25	Ledarius Brewer	G	27:19	6-11	3-7	2-4	0	3	3	3	4	17	4	4	1	0	0	22						
4	David Sloan		27:28	3-6	0-0	3-4	0	2	2	4	5	9	5	4	1	0	1	11						
14	Ty Brewer		24:23	2-4	0-2	2-2	1	4	5	2	1	6	1	1	1	0	0	22						
33	Charlie Weber		05:19	1-2	1-2	0-0	1	0	1	0	0	3	0	0	0	0	0	6						
3	Truth Harris		01:48	0-1	0-1	0-0	0	0	0	0	0	0	0	0	0	0	0	-5						
Team							2	0	2			0		2										
<b>Totals</b>				24-54	10-24	13-18	12	26	38	12	19	71	13	15	6	2	1	9						

Shooting By Period		
1st FG%	11-29	37.9%
3PT%	6-14	42.9%
FT%	2-3	66.7%
2nd FG%	13-25	52.0%
3PT%	4-10	40.0%
FT%	11-15	73.3%
GM FG%	24-54	44.4%
3PT%	10-24	41.7%
FT%	13-18	72.2%

Dead Ball Rebounds: 3, 1

Technical Fouls::NONE

	FUR	ETSU
Biggest lead	4 (2 <sup>nd</sup> 18:33)	13 (2 <sup>nd</sup> 2:27)
Best Scoring Run	13 (2 <sup>nd</sup> 18:33)	13 (2 <sup>nd</sup> 10:40)
Lead Changes	4	
Times Tied	1	
Time with Lead	04:08	33:15

Points from	FUR	ETSU
Turnovers	13	12
Paint	34	24
Second Chance	7	17
Fast Breaks	9	5
Bench	4	18

	Period by Period Scoring		
	1st	2nd	TOT
FUR	29	33	62
ETSU	30	41	71



**Furman at ETSU**

01/23/21 Freedom Hall, Johnson City  
2020-21 Men's Basketball

**Game Time:** 4:00 PM  
**Game Duration:** 2:02  
**Attendance:** 720

**Officials:** Nathan Quick, Arthur Vault, Byron Evans

**Period 1**

**Quarter Starters:**

<b>ETSU</b>	0 Adheke S	1 Smith Jr. S	12 Monsanto D	23 Patterson V	25 Brewer L
<b>FUR</b>	3 Bothwell M	4 Gurley N	10 Hunter A	20 Slawson J	45 Mounce C

Game Time	ETSU	Score	Diff	FUR
20:00	0 ADHEKE S jumpball lost			4 GURLEY N jumpball won
19:41	23 PATTERSON V steal (1)			4 GURLEY N turnover bad pass (1)
19:16	12 MONSANTO D 2pt FG from turnover outside the paint, jump shot missed			
19:13				45 MOUNCE C defensive rebound (1)
18:57				10 HUNTER A 3pt FG , jump shot missed
18:54	12 MONSANTO D defensive rebound (1)			
18:38	23 PATTERSON V foul drawn (1)			20 SLAWSON J foul personal (1 - 1)
18:37	25 BREWER L turnover bad pass (1)			45 MOUNCE C steal (1)
18:19				4 GURLEY N 2pt FG from turnover outside the paint, turnaround jump shot missed
18:15	25 BREWER L defensive rebound (1)			
18:03	0 ADHEKE S 2pt FG in the paint, layup missed			
18:02	offensive rebound (3)			
17:49	25 BREWER L 3pt FG second chance, jump shot made (3)	<b>3-0</b>	<b>3</b>	
17:30	23 PATTERSON V steal (2)			20 SLAWSON J turnover lost ball (1)
17:05	1 SMITH JR. S 2pt FG from turnover outside the paint, jump shot missed			
17:02				45 MOUNCE C defensive rebound (2)
16:55				3 BOTHWELL M 2pt FG in the paint, layup missed
16:53	1 SMITH JR. S defensive rebound (1)			
16:44	25 BREWER L 3pt FG , jump shot missed			
16:41				10 HUNTER A defensive rebound (1)
16:33				3 BOTHWELL M 3pt FG , jump shot missed
16:30				45 MOUNCE C offensive rebound (3)
16:28		<b>3-3</b>	<b>0</b>	4 GURLEY N 3pt FG second chance, jump shot made (3)
16:28				45 MOUNCE C assist (1)
16:02	12 MONSANTO D 3pt FG , jump shot made (3)	<b>6-3</b>	<b>3</b>	
16:02	1 SMITH JR. S assist (1)			
15:40				4 GURLEY N 3pt FG , jump shot missed
15:35	23 PATTERSON V defensive rebound (1)			
15:26	0 ADHEKE S foul drawn (1)			4 GURLEY N foul shooting (1 - 2)
15:26	Timeout media			
15:26	1 SMITH JR. S substitution out			
15:26	12 MONSANTO D substitution out			
15:26	4 SLOAN D substitution in			
15:26	14 BREWER T substitution in			
15:26				4 GURLEY N substitution out
15:26				10 HUNTER A substitution out
15:26				20 SLAWSON J substitution out
15:26				1 PUGH J substitution in
15:26				13 HIEN G substitution in
15:26				22 ANDERSON J substitution in
15:26	0 ADHEKE S free throw 1 - 2 made (1)	<b>7-3</b>	<b>4</b>	



**Furman at ETSU**

01/23/21 Freedom Hall, Johnson City  
2020-21 Men's Basketball

**Game Time:** 4:00 PM  
**Game Duration:** 2:02  
**Attendance:** 720

**Officials:** Nathan Quick, Arthur Vault, Byron Evans

Game Time	ETSU	Score	Diff	FUR
15:26	0 ADHEKE S free throw 2 - 2 made (2)	<b>8-3</b>	<b>5</b>	
15:26	0 ADHEKE S substitution out			
15:26	33 WEBER C substitution in			
15:17				45 MOUNCE C 3pt FG , jump shot missed
15:15				13 HIEN G offensive rebound (1)
15:04				45 MOUNCE C 3pt FG second chance, jump shot missed
15:00	14 BREWER T defensive rebound (1)			
14:45	4 SLOAN D 2pt FG in the paint, driving layup missed			
14:43				45 MOUNCE C defensive rebound (4)
14:29				3 BOTHWELL M 3pt FG , jump shot missed
14:26	4 SLOAN D defensive rebound (1)			
14:18	25 BREWER L 2pt FG in the paint, driving layup made (5)	<b>10-3</b>	<b>7</b>	
14:03	4 SLOAN D foul drawn (1)			3 BOTHWELL M foul offensive (1 - 3)
14:03				3 BOTHWELL M turnover offensive (1)
14:03	23 PATTERSON V substitution out			
14:03	12 MONSANTO D substitution in			
13:46	25 BREWER L foul offensive (1 - 1)			3 BOTHWELL M foul drawn (1)
13:46	25 BREWER L turnover offensive (2)			
13:46				3 BOTHWELL M substitution out
13:46				13 HIEN G substitution out
13:46				45 MOUNCE C substitution out
13:46				4 GURLEY N substitution in
13:46				10 HUNTER A substitution in
13:46				20 SLAWSON J substitution in
13:46	33 WEBER C substitution out			
13:46	0 ADHEKE S substitution in			
13:31	25 BREWER L foul personal (2 - 2)			1 PUGH J foul drawn (1)
13:31	25 BREWER L substitution out			
13:31	1 SMITH JR. S substitution in			
13:24				22 ANDERSON J turnover bad pass (1)
13:16	12 MONSANTO D 3pt FG from turnover, jump shot made (6)	<b>13-3</b>	<b>10</b>	
13:16	4 SLOAN D assist (1)			
13:03	4 SLOAN D foul personal (1 - 3)			10 HUNTER A foul drawn (1)
13:03				1 PUGH J substitution out
13:03				5 FOSTER M substitution in
12:52		<b>13-6</b>	<b>7</b>	10 HUNTER A 3pt FG , jump shot made (3)
12:52				20 SLAWSON J assist (1)
12:32	12 MONSANTO D 3pt FG , jump shot made (9)	<b>16-6</b>	<b>10</b>	
12:32	4 SLOAN D assist (2)			
12:01				20 SLAWSON J 2pt FG in the paint, layup blocked
12:01	1 SMITH JR. S block (1)			
11:57	0 ADHEKE S defensive rebound (1)			
11:55	4 SLOAN D turnover lost ball (1)			
11:55	Timeout media			
11:55				5 FOSTER M substitution out
11:55				22 ANDERSON J substitution out
11:55				3 BOTHWELL M substitution in
11:55				45 MOUNCE C substitution in
11:35				45 MOUNCE C 3pt FG from turnover, jump shot missed



Game Time	ETSU	Score	Diff	FUR
11:32				4 GURLEY N offensive rebound (1)
11:20				4 GURLEY N 2pt FG from turnover second chance in the paint, layup missed
11:18	0 ADHEKE S defensive rebound (2)			
10:56	14 BREWER T 3pt FG , jump shot missed			
10:51				4 GURLEY N defensive rebound (2)
10:46		<b>16-8</b>	<b>8</b>	4 GURLEY N 2pt FG in the paint, driving layup made (5)
10:46	14 BREWER T foul shooting (1 - 4)			4 GURLEY N foul drawn (1)
10:46	14 BREWER T substitution out			
10:46	23 PATTERSON V substitution in			
10:46				4 GURLEY N free throw 1 - 1 missed
10:45	23 PATTERSON V defensive rebound (2)			
10:26	23 PATTERSON V 2pt FG in the paint, layup missed			
10:22				45 MOUNCE C defensive rebound (5)
10:19				3 BOTHWELL M 2pt FG in the paint, layup missed
10:15	23 PATTERSON V defensive rebound (3)			
10:14	23 PATTERSON V turnover lost ball (1)			3 BOTHWELL M steal (1)
10:06		<b>16-10</b>	<b>6</b>	3 BOTHWELL M 2pt FG fast break from turnover in the paint, layup made (2)
09:59	0 ADHEKE S turnover travel (1)			
09:59	1 SMITH JR. S substitution out			
09:59	3 HARRIS T substitution in			
09:59				20 SLAWSON J substitution out
09:59				22 ANDERSON J substitution in
09:40		<b>16-12</b>	<b>4</b>	10 HUNTER A 2pt FG from turnover in the paint, driving layup made (5)
09:13	23 PATTERSON V turnover lost ball (2)			
09:04				3 BOTHWELL M 3pt FG from turnover, jump shot missed
09:01	0 ADHEKE S defensive rebound (3)			
08:52	4 SLOAN D turnover bad pass (2)			
08:52	4 SLOAN D substitution out			
08:52	1 SMITH JR. S substitution in			
08:44		<b>16-15</b>	<b>1</b>	45 MOUNCE C 3pt FG from turnover, jump shot made (3)
08:44				10 HUNTER A assist (1)
08:14	3 HARRIS T 3pt FG , jump shot missed			
08:11	23 PATTERSON V offensive rebound (4)			
08:11	3 HARRIS T substitution out			
08:11	23 PATTERSON V substitution out			
08:11	14 BREWER T substitution in			
08:11	25 BREWER L substitution in			
08:06	14 BREWER T 2pt FG second chance outside the paint, jump shot made (2)	<b>18-15</b>	<b>3</b>	
08:06	25 BREWER L assist (1)			
07:47	0 ADHEKE S foul personal (1 - 5)			4 GURLEY N foul drawn (2)
07:47				Timeout media
07:41		<b>18-17</b>	<b>1</b>	45 MOUNCE C 2pt FG in the paint, driving layup made (5)
07:23	0 ADHEKE S 2pt FG in the paint, hook shot made (4)	<b>20-17</b>	<b>3</b>	
07:23	25 BREWER L assist (2)			
06:58		<b>20-19</b>	<b>1</b>	10 HUNTER A 2pt FG in the paint, layup made (7)
06:58				4 GURLEY N assist (1)



**Furman at ETSU**

01/23/21 Freedom Hall, Johnson City  
2020-21 Men's Basketball

**Game Time:** 4:00 PM  
**Game Duration:** 2:02  
**Attendance:** 720

**Officials:** Nathan Quick, Arthur Vault, Byron Evans

Game Time	ETSU	Score	Diff	FUR
06:35	25 BREWER L 3pt FG , jump shot missed			
06:32				defensive rebound (10)
06:32	1 SMITH JR. S substitution out			
06:32	4 SLOAN D substitution in			
06:32				4 GURLEY N substitution out
06:32				45 MOUNCE C substitution out
06:32				13 HIEN G substitution in
06:32				20 SLAWSON J substitution in
06:18	4 SLOAN D steal (1)			10 HUNTER A turnover bad pass (1)
06:07	25 BREWER L 2pt FG from turnover in the paint, layup made (7)	<b>22-19</b>	<b>3</b>	
06:07	4 SLOAN D assist (3)			
06:07	25 BREWER L foul drawn (1)			20 SLAWSON J foul shooting (2 - 4)
06:07	0 ADHEKE S substitution out			
06:07	33 WEBER C substitution in			
06:07	25 BREWER L free throw 1 - 1 missed			
06:04	33 WEBER C offensive rebound (1)			
05:50	33 WEBER C 3pt FG second chance, jump shot made (3)	<b>25-19</b>	<b>6</b>	
05:50	25 BREWER L assist (3)			
05:21				3 BOTHWELL M 2pt FG in the paint, layup missed
05:18	12 MONSANTO D defensive rebound (2)			
05:06	12 MONSANTO D 3pt FG , step back jump shot made (12)	<b>28-19</b>	<b>9</b>	
05:03				Timeout 30 Sec
05:03	25 BREWER L substitution out			
05:03	1 SMITH JR. S substitution in			
05:03				13 HIEN G substitution out
05:03				20 SLAWSON J substitution out
05:03				4 GURLEY N substitution in
05:03				45 MOUNCE C substitution in
04:50	12 MONSANTO D substitution out			
04:50	23 PATTERSON V substitution in			
04:44		<b>28-21</b>	<b>7</b>	3 BOTHWELL M 2pt FG in the paint, layup made (4)
04:44				4 GURLEY N assist (2)
04:33	33 WEBER C 3pt FG , jump shot missed			
04:32	23 PATTERSON V offensive rebound (5)			
04:32	23 PATTERSON V foul drawn (2)			45 MOUNCE C foul personal (1 - 5)
04:21	4 SLOAN D 2pt FG second chance in the paint, jump shot made (2)	<b>30-21</b>	<b>9</b>	
03:59		<b>30-23</b>	<b>7</b>	4 GURLEY N 2pt FG in the paint, driving layup made (7)
03:42	23 PATTERSON V 3pt FG , jump shot missed			
03:39				10 HUNTER A defensive rebound (2)
03:36				3 BOTHWELL M turnover travel (2)
03:36	Timeout media			
03:36	14 BREWER T substitution out			
03:36	33 WEBER C substitution out			
03:36	0 ADHEKE S substitution in			
03:36	12 MONSANTO D substitution in			
03:36				10 HUNTER A substitution out
03:36				2 KENNEY C substitution in
03:15	12 MONSANTO D 2pt FG from turnover outside the paint, jump shot missed			



**Furman at ETSU**

01/23/21 Freedom Hall, Johnson City  
2020-21 Men's Basketball

**Game Time:** 4:00 PM  
**Game Duration:** 2:02  
**Attendance:** 720

**Officials:** Nathan Quick, Arthur Vault, Byron Evans

Game Time	ETSU	Score	Diff	FUR
03:12	0 ADHEKE S offensive rebound (4)			
03:08	0 ADHEKE S 2pt FG from turnover second chance in the paint, hook shot missed			
03:04	23 PATTERSON V offensive rebound (6)			
03:03	23 PATTERSON V 2pt FG from turnover second chance in the paint, layup missed			
03:00				45 MOUNCE C defensive rebound (6)
02:45				4 GURLEY N turnover bad pass (2)
02:32	1 SMITH JR. S 3pt FG from turnover, jump shot missed			
02:29	12 MONSANTO D offensive rebound (3)			
02:19	0 ADHEKE S turnover bad pass (2)			2 KENNEY C steal (1)
02:14				2 KENNEY C 2pt FG from turnover in the paint, layup missed
02:14	defensive dead ball rebound (1)			
02:14	jump ball situation			
02:14				2 KENNEY C substitution out
02:14				10 HUNTER A substitution in
02:00	4 SLOAN D 2pt FG in the paint, layup blocked			
02:00				45 MOUNCE C block (1)
01:55				3 BOTHWELL M defensive rebound (1)
01:40		<b>30-25</b>	<b>5</b>	4 GURLEY N 2pt FG in the paint, layup made (9)
01:40	23 PATTERSON V substitution out			
01:40	14 BREWER T substitution in			
01:22	4 SLOAN D turnover lost ball (3)			4 GURLEY N steal (1)
01:16		<b>30-27</b>	<b>3</b>	4 GURLEY N 2pt FG fast break from turnover in the paint, layup made (11)
01:16				10 HUNTER A assist (2)
00:49	0 ADHEKE S 2pt FG in the paint, layup missed			
00:48				defensive rebound (14)
00:33		<b>30-29</b>	<b>1</b>	45 MOUNCE C 2pt FG in the paint, driving layup made (7)
00:05	12 MONSANTO D foul drawn (1)			3 BOTHWELL M foul personal (2 - 6)
00:05	1 SMITH JR. S substitution out			
00:05	25 BREWER L substitution in			
00:05	Timeout 30 Sec			
00:05				22 ANDERSON J substitution out
00:05				20 SLAWSON J substitution in
00:00	25 BREWER L 3pt FG , jump shot missed			
00:00				45 MOUNCE C defensive rebound (7)
<b>END OF PERIOD</b>				
<b>ETSU 30-29 FUR</b>				



**Furman at ETSU**

01/23/21 Freedom Hall, Johnson City  
2020-21 Men's Basketball

Game Time: 4:00 PM  
Game Duration: 2:02  
Attendance: 720

Officials: Nathan Quick, Arthur Valk, Byron Evans

**Furman - 29**

NO.	Name	Min	FG			Rebounds			Fouls		TP	AS	TO	ST	Blocks		+/-
			M-A	M-A	M-A	OR	DR	TOT	PF	FD					BS	BA	
4	Noah Gurley	F 16:51	5-8	1-2	0-1	1	1	2	1	2	11	2	2	1	0	0	11
20	Jalen Slawson	F 09:55	0-1	0-0	0-0	0	0	0	2	0	0	1	1	0	0	1	-10
45	Clay Mounce	F 16:40	3-6	1-4	0-0	1	6	7	1	0	7	1	0	1	1	0	10
3	Mike Bothwell	G 18:09	2-8	0-3	0-0	0	1	1	2	1	4	0	2	1	0	0	2
10	Alex Hunter	G 16:58	3-4	1-2	0-0	0	2	2	0	1	7	2	1	0	0	0	3
1	Jaylon Pugh	02:23	0-0	0-0	0-0	0	0	0	0	1	0	0	0	0	0	0	-7
13	Garrett Hien	03:09	0-0	0-0	0-0	1	0	1	0	0	0	0	0	0	0	0	-12
22	Joe Anderson	13:25	0-0	0-0	0-0	0	0	0	0	0	0	0	1	0	0	0	-2
5	Marcus Foster	01:08	0-0	0-0	0-0	0	0	0	0	0	0	0	0	0	0	0	0
2	Colin Kenney	01:22	0-1	0-0	0-0	0	0	0	0	0	0	0	0	1	0	0	0
Team						0	2	2			0		0				
<b>Totals</b>			13-28	3-11	0-1	3	12	15	6	5	29	6	7	4	1	1	-1

Shooting By Period		
1st FG%	13-28	46.4%
3PT%	3-11	27.3%
FT%	0-1	0%
GM FG%	13-28	46.4%
3PT%	3-11	27.3%
FT%	0-1	0.0%

Dead Ball Rebounds: 0, 0

Technical Fouls::NONE

**ETSU - 30**

NO.	Name	Min	FG			Rebounds			Fouls		TP	AS	TO	ST	Blocks		+/-
			M-A	M-A	M-A	OR	DR	TOT	PF	FD					BS	BA	
0	Silas Adheke	F 15:49	1-4	0-0	2-2	1	3	4	1	1	4	0	2	0	0	0	-5
23	Vonnie Patterson	F 11:42	0-3	0-1	0-0	3	3	6	0	2	0	0	2	2	0	0	-4
1	Serrel Smith Jr.	G 15:24	0-2	0-1	0-0	0	1	1	0	0	0	1	0	0	1	0	-9
12	Damari Monsanto	G 17:23	4-6	4-4	0-0	1	2	3	0	1	12	0	0	0	0	0	-1
25	Ledarius Brewer	G 09:42	3-6	1-4	0-1	0	1	1	2	1	7	3	2	0	0	0	15
4	David Sloan	13:06	1-3	0-0	0-0	0	1	1	1	1	2	3	3	1	0	1	1
14	Ty Brewer	10:55	1-2	0-1	0-0	0	1	1	1	0	2	0	0	0	0	0	7
33	Charlie Weber	04:11	1-2	1-2	0-0	1	0	1	0	0	3	0	0	0	0	0	6
3	Truth Harris	01:48	0-1	0-1	0-0	0	0	0	0	0	0	0	0	0	0	0	-5
Team						1	0	1			0		0				
<b>Totals</b>			11-29	6-14	2-3	7	12	19	5	6	30	7	9	3	1	1	1

Shooting By Period		
1st FG%	11-29	37.9%
3PT%	6-14	42.9%
FT%	2-3	66.7%
GM FG%	11-29	37.9%
3PT%	6-14	42.9%
FT%	2-3	66.7%

Dead Ball Rebounds: 0, 1

Technical Fouls::NONE

	FUR	ETSU
Biggest lead	0 (1 <sup>st</sup> 20:00)	10 (1 <sup>st</sup> 13:16)
Best Scoring Run	9 (1 <sup>st</sup> 8:44)	10 (1 <sup>st</sup> 13:16)
Lead Changes	0	
Times Tied	1	
Time with Lead	00:00	17:23

Points from	FUR	ETSU
Turnovers	9	5
Paint	20	8
Second Chance	3	10
Fast Breaks	4	0
Bench	0	7

	Period by Period Scoring		
	1st	2nd	TOT
FUR	29	33	62
ETSU	30	41	71

**Furman at ETSU**01/23/21 Freedom Hall, Johnson City  
2020-21 Men's Basketball

Game Time: 4:00 PM

Game Duration: 2:02

Attendance: 720

Officials: Nathan Quick, Arthur Vault, Byron Evans

**Period 2****Quarter Starters:**

<b>ETSU</b>	0 Adheke S	1 Smith Jr. S	12 Monsanto D	23 Patterson V	25 Brewer L
<b>FUR</b>	3 Bothwell M	4 Gurley N	10 Hunter A	20 Slawson J	45 Mounce C

Game Time	ETSU	Score	Diff	FUR
20:00	4 SLOAN D substitution out			
20:00	14 BREWER T substitution out			
20:00	1 SMITH JR. S substitution in			
20:00	23 PATTERSON V substitution in			
19:44				20 SLAWSON J 2pt FG in the paint, layup blocked
19:44	23 PATTERSON V block (1)			
19:40				20 SLAWSON J offensive rebound (1)
19:36				45 MOUNCE C 3pt FG second chance, jump shot missed
19:36	0 ADHEKE S defensive rebound (5)			
19:36	0 ADHEKE S foul drawn (2)			4 GURLEY N foul personal (2 - 1)
19:26	25 BREWER L turnover bad pass (3)			
19:12		<b>30-31</b>	<b>-1</b>	45 MOUNCE C 2pt FG from turnover in the paint, driving layup made (9)
18:47	23 PATTERSON V 3pt FG , jump shot missed			
18:43				45 MOUNCE C defensive rebound (8)
18:33		<b>30-34</b>	<b>-4</b>	3 BOTHWELL M 3pt FG , jump shot made (7)
18:33				45 MOUNCE C assist (2)
18:11	25 BREWER L foul drawn (2)			20 SLAWSON J foul personal (3 - 2)
17:51	0 ADHEKE S 2pt FG in the paint, dunk, made (6)	<b>32-34</b>	<b>-2</b>	
17:51	23 PATTERSON V assist (1)			
17:33		<b>32-36</b>	<b>-4</b>	45 MOUNCE C 2pt FG in the paint, dunk, made (11)
17:33				3 BOTHWELL M assist (1)
17:17	1 SMITH JR. S 3pt FG , jump shot missed			
17:14	0 ADHEKE S offensive rebound (6)			
16:58	0 ADHEKE S 2pt FG second chance in the paint, layup made (8)	<b>34-36</b>	<b>-2</b>	
16:44				20 SLAWSON J 3pt FG , jump shot missed
16:41	0 ADHEKE S defensive rebound (7)			
16:30	12 MONSANTO D 3pt FG , jump shot made (15)	<b>37-36</b>	<b>1</b>	
16:30	25 BREWER L assist (4)			
16:13				10 HUNTER A 3pt FG , jump shot missed
16:10	12 MONSANTO D defensive rebound (4)			
15:49	1 SMITH JR. S foul drawn (1)			10 HUNTER A foul personal (1 - 3)
15:49				Timeout media
15:49				10 HUNTER A substitution out
15:49				20 SLAWSON J substitution out
15:49				5 FOSTER M substitution in
15:49				22 ANDERSON J substitution in
15:49	turnover sec 5 (11)			
15:49	1 SMITH JR. S substitution out			
15:49	4 SLOAN D substitution in			
15:37		<b>37-38</b>	<b>-1</b>	45 MOUNCE C 2pt FG from turnover in the paint, dunk, made (13)
15:37				4 GURLEY N assist (3)
15:17	12 MONSANTO D 2pt FG outside the paint, jump shot missed			





**Furman at ETSU**

01/23/21 Freedom Hall, Johnson City  
2020-21 Men's Basketball

**Game Time:** 4:00 PM  
**Game Duration:** 2:02  
**Attendance:** 720

**Officials:** Nathan Quick, Arthur Vaulk, Byron Evans

Game Time	ETSU	Score	Diff	FUR
15:14				22 ANDERSON J defensive rebound (1)
15:10	4 SLOAN D foul personal (2 - 1)			5 FOSTER M foul drawn (1)
14:58		<b>37-40</b>	<b>-3</b>	3 BOTHWELL M 2pt FG in the paint, driving layup made (9)
14:50	Timeout 30 Sec			
14:50	Timeout media			
14:50	23 PATTERSON V substitution out			
14:50	14 BREWER T substitution in			
14:30	4 SLOAN D 2pt FG in the paint, jump shot made (4)	<b>39-40</b>	<b>-1</b>	
14:18				45 MOUNCE C 2pt FG outside the paint, jump shot missed
14:15	14 BREWER T defensive rebound (2)			
14:11	4 SLOAN D 2pt FG fast break in the paint, driving layup made (6)	<b>41-40</b>	<b>1</b>	
14:00	14 BREWER T steal (1)			5 FOSTER M turnover bad pass (1)
13:57	14 BREWER T foul drawn (1)			4 GURLEY N foul shooting (3 - 4)
13:57	14 BREWER T free throw 1 - 2 made (3)	<b>42-40</b>	<b>2</b>	
13:57				22 ANDERSON J substitution out
13:57				10 HUNTER A substitution in
13:57	14 BREWER T free throw 2 - 2 made (4)	<b>43-40</b>	<b>3</b>	
13:57				4 GURLEY N substitution out
13:57				13 HIEN G substitution in
13:32				3 BOTHWELL M 2pt FG in the paint, turnaround jump shot missed
13:28	12 MONSANTO D defensive rebound (5)			
13:23	12 MONSANTO D 2pt FG in the paint, driving layup made (17)	<b>45-40</b>	<b>5</b>	
12:51				turnover shot clock (9)
12:51	12 MONSANTO D substitution out			
12:51	23 PATTERSON V substitution in			
12:51				5 FOSTER M substitution out
12:51				13 HIEN G substitution out
12:51				4 GURLEY N substitution in
12:51				20 SLAWSON J substitution in
12:34	14 BREWER T 3pt FG from turnover, jump shot missed			
12:30	offensive rebound (26)			
12:16	25 BREWER L 2pt FG from turnover second chance in the paint, turnaround jump shot missed			
12:13				4 GURLEY N defensive rebound (3)
12:08				4 GURLEY N 2pt FG in the paint, driving layup missed
12:05	0 ADHEKE S defensive rebound (8)			
12:01	4 SLOAN D turnover lost ball (4)			
12:00	Timeout media			
11:46				4 GURLEY N 3pt FG from turnover, jump shot missed
11:42	14 BREWER T defensive rebound (3)			
11:22	0 ADHEKE S 2pt FG in the paint, layup made (10)	<b>47-40</b>	<b>7</b>	
11:22	14 BREWER T assist (1)			
11:09				4 GURLEY N 3pt FG , jump shot missed
11:06	14 BREWER T defensive rebound (4)			
10:40	25 BREWER L 3pt FG , jump shot made (10)	<b>50-40</b>	<b>10</b>	
10:40	23 PATTERSON V assist (2)			
10:31				Timeout 30 Sec
10:31				20 SLAWSON J substitution out



## Furman at ETSU

01/23/21 Freedom Hall, Johnson City  
2020-21 Men's Basketball

Game Time: 4:00 PM

Game Duration: 2:02

Attendance: 720

Officials: Nathan Quick, Arthur Vault, Byron Evans

Game Time	ETSU	Score	Diff	FUR
10:31				22 ANDERSON J substitution in
10:11				10 HUNTER A 3pt FG , jump shot missed
10:08				45 MOUNCE C offensive rebound (9)
10:08	25 BREWER L foul shooting (3 - 2)			45 MOUNCE C foul drawn (1)
10:08		50-41	9	45 MOUNCE C free throw 1 - 2 made (14)
10:08	25 BREWER L substitution out			
10:08	12 MONSANTO D substitution in			
10:08		50-42	8	45 MOUNCE C free throw 2 - 2 made (15)
09:50	4 SLOAN D foul drawn (2)			4 GURLEY N foul personal (4 - 5)
09:50				4 GURLEY N substitution out
09:50				20 SLAWSON J substitution in
09:31	14 BREWER T turnover lost ball (1)			
09:22	0 ADHEKE S steal (1)			10 HUNTER A turnover bad pass (2)
08:52	0 ADHEKE S 2pt FG from turnover in the paint, hook shot missed			
08:48	12 MONSANTO D offensive rebound (6)			
08:48	12 MONSANTO D 2pt FG from turnover second chance in the paint, layup made (19)	52-42	10	
08:33				3 BOTHWELL M 3pt FG , jump shot missed
08:30	12 MONSANTO D defensive rebound (7)			
08:21	4 SLOAN D foul drawn (3)			22 ANDERSON J foul personal (1 - 6)
07:58	0 ADHEKE S 2pt FG in the paint, hook shot missed			
07:55				45 MOUNCE C defensive rebound (10)
07:48				22 ANDERSON J 3pt FG , jump shot missed
07:45				offensive rebound (22)
07:45	Timeout media			
07:45	0 ADHEKE S substitution out			
07:45	4 SLOAN D substitution out			
07:45	25 BREWER L substitution in			
07:45	33 WEBER C substitution in			
07:45				45 MOUNCE C substitution out
07:45				4 GURLEY N substitution in
07:35				22 ANDERSON J 3pt FG second chance, jump shot missed
07:31	25 BREWER L defensive rebound (2)			
07:02	12 MONSANTO D 3pt FG , jump shot missed			
06:57	14 BREWER T offensive rebound (5)			
06:39	25 BREWER L 3pt FG , jump shot missed			
06:37				defensive rebound (23)
06:37	33 WEBER C substitution out			
06:37	0 ADHEKE S substitution in			
06:37				22 ANDERSON J substitution out
06:37				45 MOUNCE C substitution in
06:30	23 PATTERSON V foul personal (1 - 3)			20 SLAWSON J foul drawn (1)
06:30	14 BREWER T substitution out			
06:30	4 SLOAN D substitution in			
06:20		52-45	7	45 MOUNCE C 3pt FG , jump shot made (18)
06:20				20 SLAWSON J assist (2)
05:51	4 SLOAN D 2pt FG in the paint, jump shot missed			
05:48				10 HUNTER A defensive rebound (3)
05:44		52-48	4	3 BOTHWELL M 3pt FG fast break, jump shot made (12)



**Furman at ETSU**

01/23/21 Freedom Hall, Johnson City  
2020-21 Men's Basketball

**Game Time:** 4:00 PM  
**Game Duration:** 2:02  
**Attendance:** 720

**Officials:** Nathan Quick, Arthur Vault, Byron Evans

Game Time	ETSU	Score	Diff	FUR
05:44				10 HUNTER A assist (3)
05:18	12 MONSANTO D 2pt FG in the paint, layup missed			
05:14	23 PATTERSON V offensive rebound (7)			
05:11	12 MONSANTO D 3pt FG second chance, jump shot made (22)	<b>55-48</b>	<b>7</b>	
05:08	Timeout 30 Sec			
05:08	23 PATTERSON V substitution out			
05:08	14 BREWER T substitution in			
04:48		<b>55-50</b>	<b>5</b>	4 GURLEY N 2pt FG in the paint, layup made (13)
04:48				20 SLAWSON J assist (3)
04:22	14 BREWER T 2pt FG outside the paint, jump shot made (6)	<b>57-50</b>	<b>7</b>	
04:22	4 SLOAN D assist (4)			
04:02				45 MOUNCE C 3pt FG , jump shot missed
03:59	4 SLOAN D defensive rebound (2)			
03:43	12 MONSANTO D 3pt FG , jump shot missed			
03:41				20 SLAWSON J defensive rebound (2)
03:41	4 SLOAN D foul personal (3 - 4)			20 SLAWSON J foul drawn (2)
03:41	Timeout media			
03:19				45 MOUNCE C 3pt FG , jump shot missed
03:16				45 MOUNCE C offensive rebound (11)
03:16	12 MONSANTO D foul personal (1 - 5)			45 MOUNCE C foul drawn (2)
03:03	4 SLOAN D foul shooting (4 - 6)			20 SLAWSON J foul drawn (3)
03:03				20 SLAWSON J free throw 1 - 2 missed
03:03				offensive dead ball rebound (1)
03:03				20 SLAWSON J free throw 2 - 2 missed
03:03	12 MONSANTO D defensive rebound (8)			
02:39	25 BREWER L 3pt FG , jump shot made (13)	<b>60-50</b>	<b>10</b>	
02:39	4 SLOAN D assist (5)			
02:29	25 BREWER L steal (1)			20 SLAWSON J turnover bad pass (2)
02:27	25 BREWER L 2pt FG fast break from turnover in the paint, dunk, made (15)	<b>62-50</b>	<b>12</b>	
02:27	25 BREWER L foul drawn (3)			20 SLAWSON J foul shooting (4 - 7)
02:27	25 BREWER L free throw fast break 1 - 1 made (16)	<b>63-50</b>	<b>13</b>	
02:22	4 SLOAN D substitution out			
02:22	23 PATTERSON V substitution in			
02:22				20 SLAWSON J substitution out
02:22				22 ANDERSON J substitution in
02:17		<b>63-53</b>	<b>10</b>	45 MOUNCE C 3pt FG , jump shot made (21)
02:17				10 HUNTER A assist (4)
02:17				Timeout 30 Sec
02:17	23 PATTERSON V substitution out			
02:17	4 SLOAN D substitution in			
01:55	4 SLOAN D foul drawn (4)			4 GURLEY N foul personal (5 - 8)
01:55				4 GURLEY N substitution out
01:55				13 HIEN G substitution in
01:55	4 SLOAN D 1&1 free throw 1 made (7)	<b>64-53</b>	<b>11</b>	
01:55	4 SLOAN D 1&1 free throw 2 made (8)	<b>65-53</b>	<b>12</b>	
01:55	4 SLOAN D substitution out			
01:55	23 PATTERSON V substitution in			
01:48	14 BREWER T foul personal (2 - 7)			3 BOTHWELL M foul drawn (2)



**Furman at ETSU**

01/23/21 Freedom Hall, Johnson City  
2020-21 Men's Basketball

**Game Time:** 4:00 PM  
**Game Duration:** 2:02  
**Attendance:** 720

**Officials:** Nathan Quick, Arthur Vault, Byron Evans

Game Time	ETSU	Score	Diff	FUR
01:48	23 PATTERSON V substitution out			
01:48	4 SLOAN D substitution in			
01:48		<b>65-54</b>	<b>11</b>	3 BOTHWELL M 1&1 free throw 1 made (13)
01:48		<b>65-55</b>	<b>10</b>	3 BOTHWELL M 1&1 free throw 2 made (14)
01:45	0 ADHEKE S foul drawn (3)			13 HIEN G foul flagrant 1 (1 - 9)
01:45	0 ADHEKE S free throw fast break 1 - 2 missed			
01:45	offensive dead ball rebound (2)			
01:45	0 ADHEKE S free throw fast break 2 - 2 missed			
01:45	offensive dead ball rebound (3)			
01:45	0 ADHEKE S substitution out			
01:45	1 SMITH JR. S substitution in			
01:45	25 BREWER L turnover bad pass (4)			
01:45	1 SMITH JR. S substitution out			
01:45	0 ADHEKE S substitution in			
01:36				3 BOTHWELL M 2pt FG from turnover in the paint, driving layup missed
01:28	0 ADHEKE S defensive rebound (9)			
01:28	4 SLOAN D substitution out			
01:28	23 PATTERSON V substitution in			
01:28	0 ADHEKE S foul drawn (4)			3 BOTHWELL M foul personal (3 - 10)
01:28	0 ADHEKE S free throw 1 - 2 made (11)	<b>66-55</b>	<b>11</b>	
01:28	12 MONSANTO D substitution out			
01:28	4 SLOAN D substitution in			
01:28	0 ADHEKE S free throw 2 - 2 made (12)	<b>67-55</b>	<b>12</b>	
01:16				45 MOUNCE C 3pt FG , jump shot missed
01:13				13 HIEN G offensive rebound (2)
01:12		<b>67-57</b>	<b>10</b>	13 HIEN G 2pt FG second chance in the paint, layup made (2)
01:10	25 BREWER L foul drawn (4)			10 HUNTER A foul personal (2 - 11)
01:10	25 BREWER L free throw 1 - 2 missed			
01:10	offensive dead ball rebound (4)			
01:10	25 BREWER L free throw 2 - 2 made (17)	<b>68-57</b>	<b>11</b>	
00:59		<b>68-59</b>	<b>9</b>	13 HIEN G 2pt FG in the paint, layup made (4)
00:59				22 ANDERSON J assist (1)
00:59	4 SLOAN D foul drawn (5)			3 BOTHWELL M foul personal (4 - 12)
00:59	4 SLOAN D free throw 1 - 2 made (9)	<b>69-59</b>	<b>10</b>	
00:59	4 SLOAN D free throw 2 - 2 missed			
00:58				45 MOUNCE C defensive rebound (12)
00:51		<b>69-62</b>	<b>7</b>	3 BOTHWELL M 3pt FG , jump shot made (17)
00:49	0 ADHEKE S foul drawn (5)			22 ANDERSON J foul personal (2 - 13)
00:49	0 ADHEKE S free throw 1 - 2 made (13)	<b>70-62</b>	<b>8</b>	
00:49	0 ADHEKE S free throw 2 - 2 made (14)	<b>71-62</b>	<b>9</b>	
00:45				3 BOTHWELL M 3pt FG , jump shot missed
00:41	25 BREWER L defensive rebound (3)			
00:12	turnover shot clock (15)			
00:04				45 MOUNCE C 3pt FG from turnover, jump shot missed
00:00				3 BOTHWELL M offensive rebound (2)
00:00				3 BOTHWELL M 3pt FG from turnover second chance, jump shot missed
00:00				10 HUNTER A offensive rebound (4)

END OF GAME



Official Basketball Play by Play - Second Half

**Furman at ETSU**

01/23/21 Freedom Hall, Johnson City  
2020-21 Men's Basketball

**Game Time:** 4:00 PM

**Game Duration:** 2:02

**Attendance:** 720

**Officials:** Nathan Quick, Arthur Vault, Byron Evans

Game Time	ETSU	Score	Diff	FUR
ETSU 71-62 FUR				



Furman at ETSU

01/23/21 Freedom Hall, Johnson City  
2020-21 Men's Basketball

Game Time: 4:00 PM  
Game Duration: 2:02  
Attendance: 720

Officials: Nathan Quick, Arthur Valk, Byron Evans

Furman - 33

NO.	Name	Min	FG	3P	FT	Rebounds			Fouls		TP	AS	TO	ST	Blocks		+/-
			M-A	M-A	M-A	OR	DR	TOT	PF	FD					BS	BA	
4	Noah Gurley	F 14:54	1-4	0-2	0-0	0	1	1	4	0	2	1	0	0	0	0	-5
20	Jalen Slawson	F 13:59	0-2	0-1	0-2	1	1	2	2	3	0	2	1	0	0	1	-10
45	Clay Mounce	F 18:52	5-11	2-7	2-2	2	3	5	0	2	14	1	0	0	0	0	-8
3	Mike Bothwell	G 20:00	4-9	3-6	2-2	1	0	1	2	1	13	1	0	0	0	0	-8
10	Alex Hunter	G 18:08	0-2	0-2	0-0	1	1	2	2	0	0	2	1	0	0	0	-7
5	Marcus Foster	02:58	0-0	0-0	0-0	0	0	0	0	1	0	0	1	0	0	0	-4
22	Joe Anderson	08:08	0-2	0-2	0-0	0	1	1	2	0	0	1	0	0	0	0	3
13	Garrett Hien	03:01	2-2	0-0	0-0	1	0	1	1	0	4	0	0	0	0	0	-1
Team						1	1	2			0		1				
<b>Totals</b>			12-32	5-20	4-6	7	8	15	13	7	33	8	4	0	0	1	-8

Shooting By Period		
2 <sup>nd</sup> FG%	12-32	37.5%
3PT%	5-20	25.0%
FT%	4-6	66.7%
GM FG%	12-32	37.5%
3PT%	5-20	25.0%
FT%	4-6	66.7%

Dead Ball Rebounds: 1, 0

Technical Fouls::NONE

ETSU - 41

NO.	Name	Min	FG	3P	FT	Rebounds			Fouls		TP	AS	TO	ST	Blocks		+/-
			M-A	M-A	M-A	OR	DR	TOT	PF	FD					BS	BA	
0	Silas Adheke	F 18:52	3-5	0-0	4-6	1	4	5	0	4	10	0	0	1	0	0	8
23	Vonnie Patterson	F 14:33	0-1	0-1	0-0	1	0	1	1	0	0	2	0	0	1	0	-6
1	Serrel Smith Jr.	G 04:11	0-1	0-1	0-0	0	0	0	0	1	0	0	0	0	0	0	0
12	Damari Monsanto	G 15:49	4-8	2-4	0-0	1	4	5	1	0	10	0	0	0	0	0	6
25	Ledarius Brewer	G 17:37	3-5	2-3	2-3	0	2	2	1	3	10	1	2	1	0	0	7
4	David Sloan	14:22	2-3	0-0	3-4	0	1	1	3	4	7	2	1	0	0	0	10
14	Ty Brewer	13:28	1-2	0-1	2-2	1	3	4	1	1	4	1	1	1	0	0	15
33	Charlie Weber	01:08	0-0	0-0	0-0	0	0	0	0	0	0	0	0	0	0	0	0
Team						1	0	1			0		2				
<b>Totals</b>			13-25	4-10	11-15	5	14	19	7	13	41	6	6	3	1	0	8

Shooting By Period		
2 <sup>nd</sup> FG%	13-25	52.0%
3PT%	4-10	40.0%
FT%	11-15	73.3%
GM FG%	13-25	52.0%
3PT%	4-10	40.0%
FT%	11-15	73.3%

Dead Ball Rebounds: 3, 0

Technical Fouls::NONE

	FUR	ETSU
Biggest lead	4 (2 <sup>nd</sup> 18:33)	13 (2 <sup>nd</sup> 2:27)
Best Scoring Run	6(2 <sup>nd</sup> 5:44)	13(2 <sup>nd</sup> 10:40)
Lead Changes	4	
Times Tied	0	
Time with Lead	04:08	15:36

Points from	FUR	ETSU
Turnovers	4	7
Paint	14	16
Second Chance	4	7
Fast Breaks	5	5
Bench	4	11

	Period by Period Scoring		
	1st	2nd	TOT
FUR	29	33	62
ETSU	30	41	71



**Furman at ETSU**

01/23/21 Freedom Hall, Johnson City  
2020-21 Men's Basketball

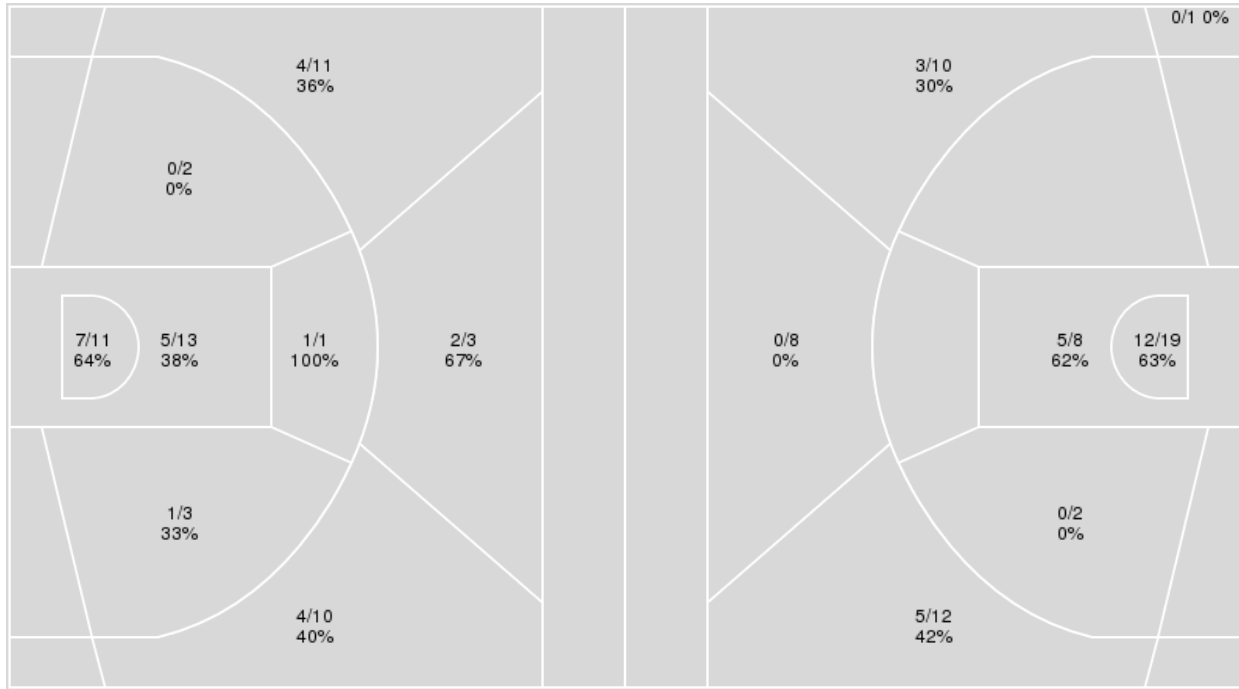
**Game Time:** 4:00 PM  
**Game Duration:** 2:02  
**Attendance:** 720

**Officials:** Nathan Quick, Arthur Vault, Byron Evans

{ Players => 0, 1, 2, 3, 4, 5, 11, 12, 14, 15, 21, 22, 23, 24, 25, 33; } FG { Players => All; } FG Types => All; Results => All;  
Types => All; Results => All;

**ETSU**

**Furman**



ETSU	M/A	%
Field Goals	24/54	44
2 Points	14/30	47
3 Points	10/24	42
Free Throws	13/18	72

Furman	M/A	%
Field Goals	25/60	42
2 Points	17/29	59
3 Points	8/31	26
Free Throws	4/7	57

**Furman at ETSU**01/23/21 Freedom Hall, Johnson City  
2020-21 Men's Basketball

Game Time: 4:00 PM

Game Duration: 2:02

Attendance: 720

Officials: Nathan Quick, Arthur Valk, Byron Evans

**Furman**

No	Name	Mins		Score		Points Diff		Points per Min		Assists		Rebounds		Steals		Turnovers	
		On	Off	On	Off	On	Off	On	Off	On	Off	On	Off	On	Off	On	Off
1	Jaylon Pugh	02:23	37:37	0 - 7	62 - 64	-7	-2	0.00	1.65	0	14	2	28	0	4	2	9
2	Colin Kenney	01:22	38:38	0 - 0	62 - 71	0	-9	0.00	1.60	0	14	1	29	1	3	1	10
3	Mike Bothwell	38:09	01:51	59 - 65	3 - 6	-6	-3	1.55	1.62	13	1	30	0	4	0	10	1
4	Noah Gurley	31:45	08:15	53 - 47	9 - 24	6	-15	1.67	1.09	13	1	22	8	4	0	7	4
5	Marcus Foster	04:06	35:54	7 - 11	55 - 60	-4	-5	1.71	1.53	2	12	1	29	0	4	2	9
10	Alex Hunter	35:06	04:54	58 - 62	4 - 9	-4	-5	1.65	0.82	13	1	26	4	3	1	8	3
13	Garrett Hien	06:10	33:50	9 - 22	53 - 49	-13	4	1.46	1.57	1	13	6	24	0	4	3	8
20	Jalen Slawson	23:54	16:06	25 - 45	37 - 26	-20	11	1.05	2.30	7	7	17	13	2	2	6	5
22	Joe Anderson	21:33	18:27	40 - 39	22 - 32	1	-10	1.86	1.19	8	6	16	14	2	2	7	4
45	Clay Mounce	35:32	04:28	59 - 57	3 - 14	2	-11	1.66	0.67	13	1	29	1	4	0	9	2

**ETSU**

No	Name	Mins		Score		Points Diff		Points per Min		Assists		Rebounds		Steals		Turnovers	
		On	Off	On	Off	On	Off	On	Off	On	Off	On	Off	On	Off	On	Off
0	Silas Adheke	34:41	05:19	61 - 58	10 - 4	3	6	1.76	1.88	12	1	31	7	6	0	13	2
1	Serrel Smith Jr.	19:35	20:25	25 - 34	46 - 28	-9	18	1.28	2.25	7	6	18	20	2	4	9	6
3	Truth Harris	01:48	38:12	0 - 5	71 - 57	-5	14	0.00	1.86	0	13	2	36	0	6	2	13
4	David Sloan	27:28	12:32	53 - 42	18 - 20	11	-2	1.93	1.44	8	5	26	12	4	2	12	3
12	Damari Monsanto	33:12	06:48	55 - 50	16 - 12	5	4	1.66	2.35	11	2	30	8	6	0	13	2
14	Ty Brewer	24:23	15:37	55 - 33	16 - 29	22	-13	2.26	1.02	10	3	21	17	4	2	7	8
23	Vonnie Patterson	26:15	13:45	35 - 45	36 - 17	-10	19	1.33	2.62	5	8	29	9	3	3	11	4
25	Ledarius Brewer	27:19	12:41	61 - 39	10 - 23	22	-13	2.23	0.79	11	2	26	12	5	1	7	8
33	Charlie Weber	05:19	34:41	10 - 4	61 - 58	6	3	1.88	1.76	1	12	7	31	0	6	1	14

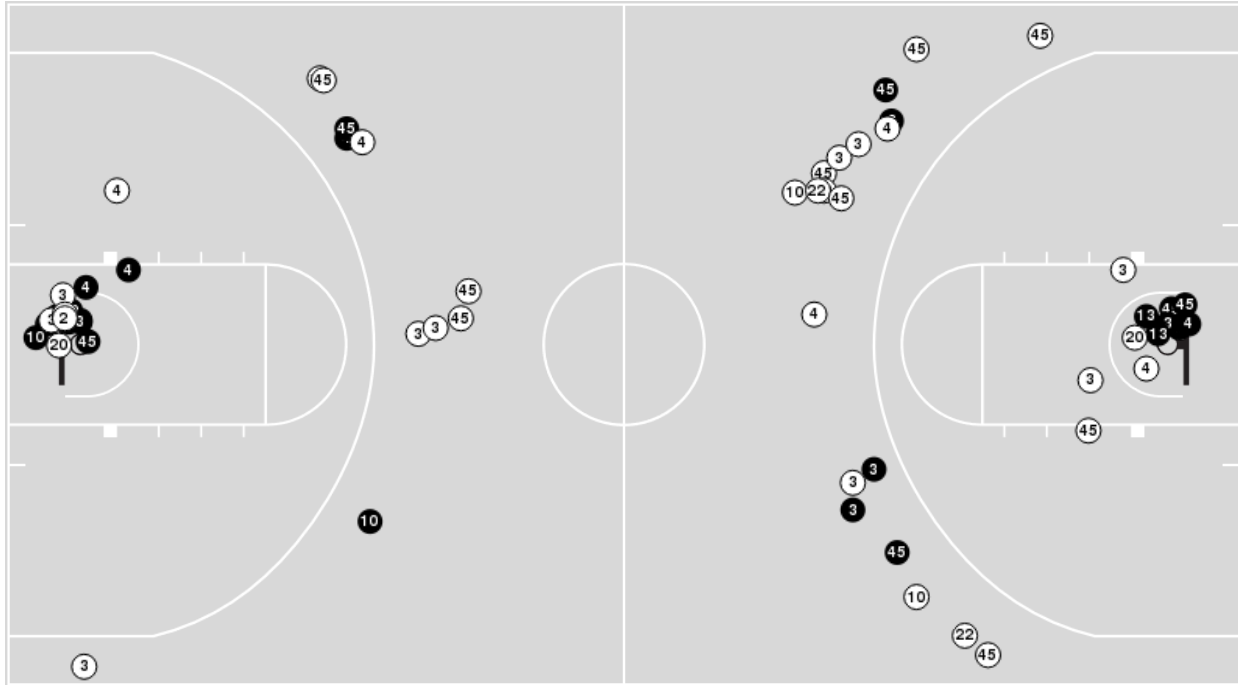




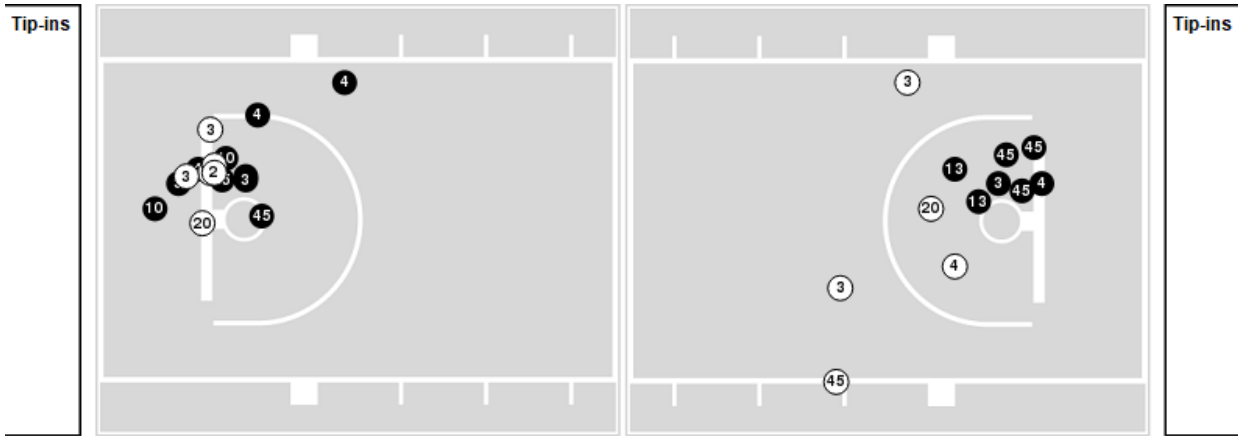
Players => AllFG Types=>AllResults=>All

**Furman**

**All Field Goals**



**Blow Up Chart**



● Made    ○ Missed    N - Player Number

Furman	M/A	%
Field Goals	25/60	42
2 Points	17/29	59
3 Points	8/31	26
Free Throws	4/7	57

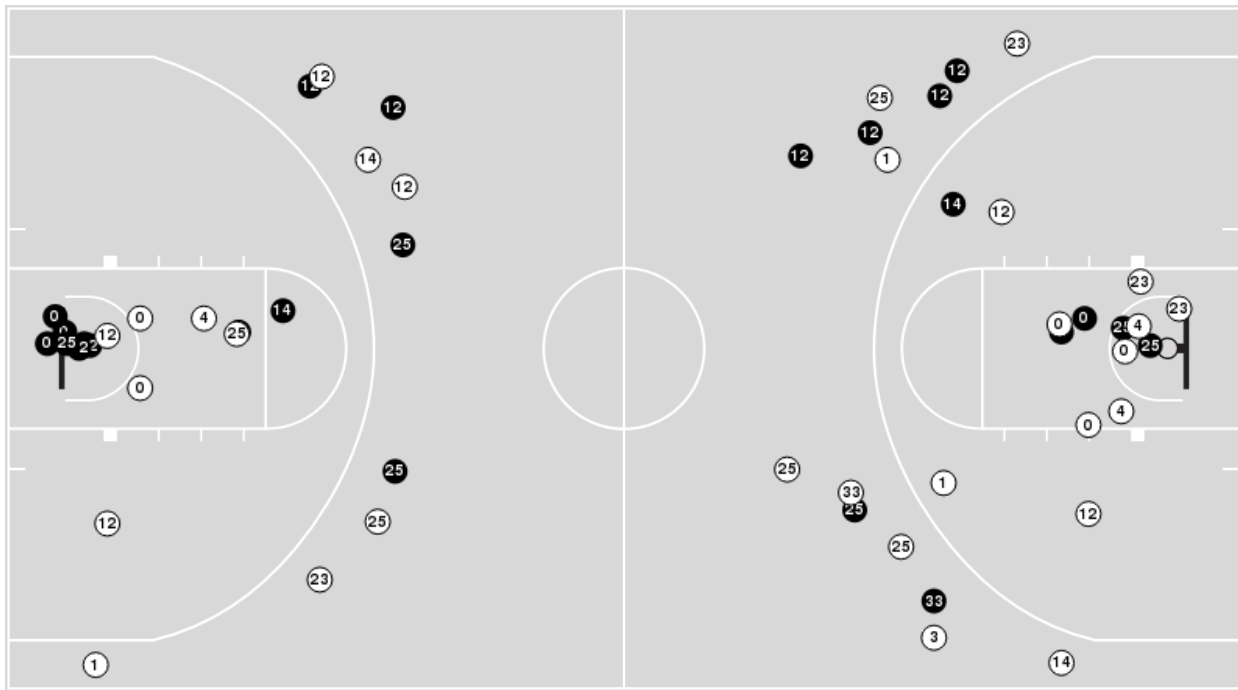
Furman	M/A	%
Points in the Paint	34 (17 / 27)	63
Fast Break Points	9 (5/5)	100
Second Chance Points	7 (4/11)	36
Effective FG%	48	



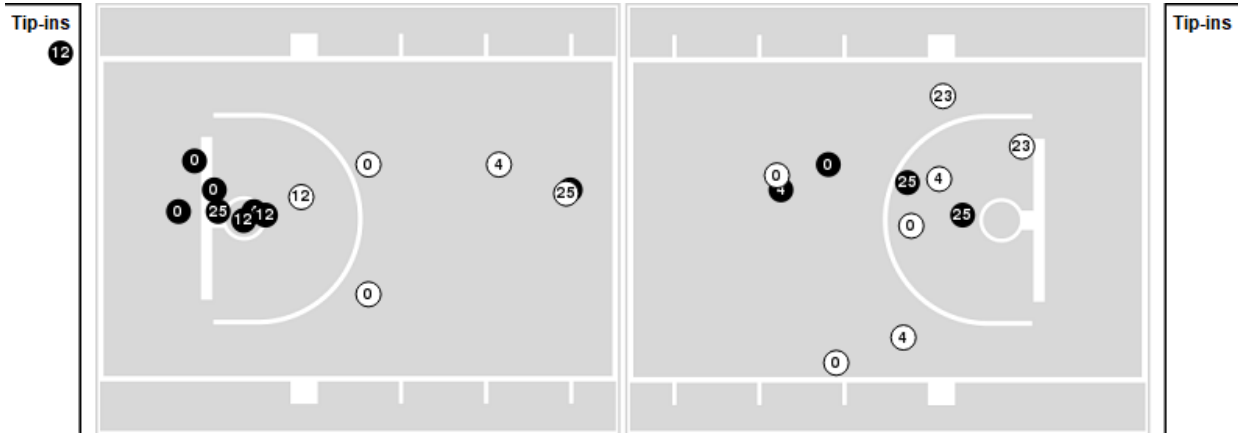
Players => 0, 1, 2, 3, 4, 5, 11, 12, 14, 15, 21, 22, 23, 24, 25, 33 FG Types=>All Results=>All

**ETSU**

**All Field Goals**



**Blow Up Chart**



● Made    ○ Missed    N - Player Number

ETSU	M/A	%
Field Goals	24/54	44
2 Points	14/30	47
3 Points	10/24	42
Free Throws	13/18	72

ETSU	M/A	%
Points in the Paint	24 (12 / 24)	50
Fast Break Points	5 (3/5)	60
Second Chance Points	17 (7/10)	70
Effective FG%	54	



**Furman at ETSU**

01/23/21 Freedom Hall, Johnson City  
2020-21 Men's Basketball

**Game Time:** 4:00 PM  
**Game Duration:** 2:02  
**Attendance:** 720

**Officials:** Nathan Quick, Arthur Vault, Byron Evans

**Furman**

Lineup	Quarter On	Time On	Quarter Off	Time Off	Time on Court	Score	Score Diff	Reb	Stl	Tov	Ass	PPP
3- Bothwell M/ 4- Gurley N/ 10- Hunter A/ 20- Slawson J/ 45- Mounce C/	1	20:00	1	15:26	04:34	3-6	-3	4	1	2	1	0.4286
1- Pugh J/ 3- Bothwell M/ 13- Hien G/ 22- Anderson J/ 45- Mounce C/	1	15:26	1	13:46	01:40	0-4	-4	2	0	1	0	0.0000
1- Pugh J/ 4- Gurley N/ 10- Hunter A/ 20- Slawson J/ 22- Anderson J/	1	13:46	1	13:03	00:43	0-3	-3	0	0	1	0	0.0000
4- Gurley N/ 5- Foster M/ 10- Hunter A/ 20- Slawson J/ 22- Anderson J/	1	13:03	1	11:55	01:08	3-3	0	0	0	0	1	1.5000
3- Bothwell M/ 4- Gurley N/ 10- Hunter A/ 20- Slawson J/ 45- Mounce C/	1	11:55	1	09:59	01:56	4-0	4	3	1	0	0	0.9009
3- Bothwell M/ 4- Gurley N/ 10- Hunter A/ 22- Anderson J/ 45- Mounce C/	1	09:59	1	06:32	03:27	9-4	5	1	0	0	2	1.8000
3- Bothwell M/ 10- Hunter A/ 13- Hien G/ 20- Slawson J/ 22- Anderson J/	1	06:32	1	05:03	01:29	0-8	-8	0	0	1	0	0.0000
3- Bothwell M/ 4- Gurley N/ 10- Hunter A/ 22- Anderson J/ 45- Mounce C/	1	05:03	1	03:36	01:27	4-2	2	1	0	1	1	1.3333
2- Kenney C/ 3- Bothwell M/ 4- Gurley N/ 22- Anderson J/ 45- Mounce C/	1	03:36	1	02:14	01:22	0-0	0	1	1	1	0	0.0000
3- Bothwell M/ 4- Gurley N/ 10- Hunter A/ 22- Anderson J/ 45- Mounce C/	1	02:14	1	00:05	02:09	6-0	6	2	1	0	1	2.0000
3- Bothwell M/ 4- Gurley N/ 10- Hunter A/ 20- Slawson J/ 45- Mounce C/	1	00:05	2	15:49	04:16	7-7	0	3	0	0	2	1.1667
3- Bothwell M/ 4- Gurley N/ 5- Foster M/ 22- Anderson J/ 45- Mounce C/	2	15:49	2	13:57	01:52	4-5	-1	1	0	1	1	1.0000
3- Bothwell M/ 4- Gurley N/ 5- Foster M/ 10- Hunter A/ 45- Mounce C/	2	13:57	2	13:57	00:00	0-1	-1	0	0	0	0	0.0000
3- Bothwell M/ 5- Foster M/ 10- Hunter A/ 13- Hien G/ 45- Mounce C/	2	13:57	2	12:51	01:06	0-2	-2	0	0	1	0	0.0000
3- Bothwell M/ 4- Gurley N/ 10- Hunter A/ 20- Slawson J/ 45- Mounce C/	2	12:51	2	10:31	02:20	0-5	-5	1	0	0	0	0.0000
3- Bothwell M/ 4- Gurley N/ 10- Hunter A/ 22- Anderson J/ 45- Mounce C/	2	10:31	2	09:50	00:41	2-0	2	1	0	0	0	2.2727
3- Bothwell M/ 10- Hunter A/ 20- Slawson J/ 22- Anderson J/ 45- Mounce C/	2	09:50	2	07:45	02:05	0-2	-2	2	0	1	0	0.0000
3- Bothwell M/ 4- Gurley N/ 10- Hunter A/ 20- Slawson J/ 22- Anderson J/	2	07:45	2	06:37	01:08	0-0	0	1	0	0	0	0.0000
3- Bothwell M/ 4- Gurley N/ 10- Hunter A/ 20- Slawson J/ 45- Mounce C/	2	06:37	2	02:22	04:15	8-11	-3	3	0	1	3	1.3605
3- Bothwell M/ 4- Gurley N/ 10- Hunter A/ 22- Anderson J/ 45- Mounce C/	2	02:22	2	01:55	00:27	3-0	3	0	0	0	1	3.0000
3- Bothwell M/ 10- Hunter A/ 13- Hien G/ 22- Anderson J/ 45- Mounce C/	2	01:55	2	00:00	01:55	9-8	1	4	0	0	1	1.5306



**Furman at ETSU**

01/23/21 Freedom Hall, Johnson City  
2020-21 Men's Basketball

**Game Time:** 4:00 PM  
**Game Duration:** 2:02  
**Attendance:** 720

**Officials:** Nathan Quick, Arthur Vaulk, Byron Evans

**ETSU**

Lineup	Quarter On	Time On	Quarter Off	Time Off	Time on Court	Score	Score Diff	Reb	Stl	Tov	Ass	PPP
0- Adheke S/ 1- Smith Jr. S/ 12- Monsanto D/ 23- Patterson V/ 25- Brewer L/	1	20:00	1	15:26	04:34	6-3	3	5	2	1	1	1.0000
0- Adheke S/ 4- Sloan D/ 14- Brewer T/ 23- Patterson V/ 25- Brewer L/	1	15:26	1	15:26	00:00	2-0	2	0	0	0	0	2.2727
4- Sloan D/ 14- Brewer T/ 23- Patterson V/ 25- Brewer L/ 33- Weber C/	1	15:26	1	14:03	01:23	2-0	2	2	0	0	0	1.0000
4- Sloan D/ 12- Monsanto D/ 14- Brewer T/ 25- Brewer L/ 33- Weber C/	1	14:03	1	13:46	00:17	0-0	0	0	0	1	0	0.0000
0- Adheke S/ 4- Sloan D/ 12- Monsanto D/ 14- Brewer T/ 25- Brewer L/	1	13:46	1	13:31	00:15	0-0	0	0	0	0	0	0.0000
0- Adheke S/ 1- Smith Jr. S/ 4- Sloan D/ 12- Monsanto D/ 14- Brewer T/	1	13:31	1	10:46	02:45	6-5	1	2	0	1	2	1.5000
0- Adheke S/ 1- Smith Jr. S/ 4- Sloan D/ 12- Monsanto D/ 23- Patterson V/	1	10:46	1	09:59	00:47	0-2	-2	2	0	2	0	0.0000
0- Adheke S/ 3- Harris T/ 4- Sloan D/ 12- Monsanto D/ 23- Patterson V/	1	09:59	1	08:52	01:07	0-2	-2	1	0	2	0	0.0000
0- Adheke S/ 1- Smith Jr. S/ 3- Harris T/ 12- Monsanto D/ 23- Patterson V/	1	08:52	1	08:11	00:41	0-3	-3	1	0	0	0	0.0000
0- Adheke S/ 1- Smith Jr. S/ 12- Monsanto D/ 14- Brewer T/ 25- Brewer L/	1	08:11	1	06:32	01:39	4-4	0	0	0	0	2	1.3333
0- Adheke S/ 4- Sloan D/ 12- Monsanto D/ 14- Brewer T/ 25- Brewer L/	1	06:32	1	06:07	00:25	2-0	2	0	1	0	1	2.0000
4- Sloan D/ 12- Monsanto D/ 14- Brewer T/ 25- Brewer L/ 33- Weber C/	1	06:07	1	05:03	01:04	6-0	6	2	0	0	1	4.1667
1- Smith Jr. S/ 4- Sloan D/ 12- Monsanto D/ 14- Brewer T/ 33- Weber C/	1	05:03	1	04:50	00:13	0-0	0	0	0	0	0	0.0000
1- Smith Jr. S/ 4- Sloan D/ 14- Brewer T/ 23- Patterson V/ 33- Weber C/	1	04:50	1	03:36	01:14	2-4	-2	1	0	0	0	1.0000
0- Adheke S/ 1- Smith Jr. S/ 4- Sloan D/ 12- Monsanto D/ 23- Patterson V/	1	03:36	1	01:40	01:56	0-2	-2	3	0	1	0	0.0000
0- Adheke S/ 1- Smith Jr. S/ 4- Sloan D/ 12- Monsanto D/ 14- Brewer T/	1	01:40	1	00:05	01:35	0-4	-4	0	0	1	0	0.0000
0- Adheke S/ 4- Sloan D/ 12- Monsanto D/ 14- Brewer T/ 25- Brewer L/	1	00:05	2	20:00	00:05	0-0	0	0	0	0	0	0.0000
0- Adheke S/ 1- Smith Jr. S/ 12- Monsanto D/ 23- Patterson V/ 25- Brewer L/	2	20:00	2	15:49	04:11	7-7	0	4	0	2	2	1.1667
0- Adheke S/ 4- Sloan D/ 12- Monsanto D/ 23- Patterson V/ 25- Brewer L/	2	15:49	2	14:50	00:59	0-4	-4	0	0	0	0	0.0000
0- Adheke S/ 4- Sloan D/ 12- Monsanto D/ 14- Brewer T/ 25- Brewer L/	2	14:50	2	12:51	01:59	8-0	8	2	1	0	0	2.0619
0- Adheke S/ 4- Sloan D/ 14- Brewer T/ 23- Patterson V/ 25- Brewer L/	2	12:51	2	10:08	02:43	5-1	4	4	0	1	2	1.2500
0- Adheke S/ 4- Sloan D/ 12- Monsanto D/ 14- Brewer T/ 23- Patterson V/	2	10:08	2	07:45	02:23	2-1	1	2	1	1	0	0.6667
12- Monsanto D/ 14- Brewer T/ 23- Patterson V/ 25- Brewer L/ 33- Weber C/	2	07:45	2	06:37	01:08	0-0	0	2	0	0	0	0.0000
0- Adheke S/ 12- Monsanto D/ 14- Brewer T/ 23- Patterson V/ 25- Brewer L/	2	06:37	2	06:30	00:07	0-0	0	0	0	0	0	0.0000
0- Adheke S/ 4- Sloan D/ 12- Monsanto D/ 23- Patterson V/ 25- Brewer L/	2	06:30	2	05:08	01:22	3-6	-3	1	0	0	0	1.5000
0- Adheke S/ 4- Sloan D/ 12- Monsanto D/ 14- Brewer T/ 25- Brewer L/	2	05:08	2	02:22	02:46	8-2	6	2	1	0	2	1.8018
0- Adheke S/ 12- Monsanto D/ 14- Brewer T/ 23- Patterson V/ 25- Brewer L/	2	02:22	2	02:17	00:05	0-3	-3	0	0	0	0	0.0000
0- Adheke S/ 4- Sloan D/ 12- Monsanto D/ 14- Brewer T/ 25- Brewer L/	2	02:17	2	01:55	00:22	2-0	2	0	0	0	0	2.2727
0- Adheke S/ 12- Monsanto D/ 14- Brewer T/ 23- Patterson V/ 25- Brewer L/	2	01:55	2	01:48	00:07	0-0	0	0	0	0	0	0.0000
0- Adheke S/ 4- Sloan D/ 12- Monsanto D/ 14- Brewer T/ 25- Brewer L/	2	01:48	2	01:45	00:03	0-2	-2	0	0	0	0	0.0000
1- Smith Jr. S/ 4- Sloan D/ 12- Monsanto D/ 14- Brewer T/ 25- Brewer L/	2	01:45	2	01:45	00:00	0-0	0	0	0	1	0	0.0000
0- Adheke S/ 4- Sloan D/ 12- Monsanto D/ 14- Brewer T/ 25- Brewer L/	2	01:45	2	01:28	00:17	0-0	0	1	0	0	0	0.0000
0- Adheke S/ 12- Monsanto D/ 14- Brewer T/ 23- Patterson V/ 25- Brewer L/	2	01:28	2	01:28	00:00	1-0	1	0	0	0	0	2.2727
0- Adheke S/ 4- Sloan D/ 14- Brewer T/ 23- Patterson V/ 25- Brewer L/	2	01:28	2	00:00	01:28	5-7	-2	1	0	1	0	1.2255



**Furman at ETSU**

01/23/21 Freedom Hall, Johnson City  
2020-21 Men's Basketball

**Game Time:** 4:00 PM  
**Game Duration:** 2:02  
**Attendance:** 720

**Officials:** Nathan Quick, Arthur Vault, Byron Evans

**Furman**

Lineup	Time	Score	Score Diff	Pts/Min	Reb	Stl	Tov	Ass	PPP
3- Bothwell M/ 4- Gurley N/ 10- Hunter A/ 20- Slawson J/ 45- Mounce C/	17:21	22-29	-7	1.2680	14	2	3	6	0.8359
3- Bothwell M/ 4- Gurley N/ 10- Hunter A/ 22- Anderson J/ 45- Mounce C/	08:11	24-6	18	2.9328	5	1	1	5	1.8634
3- Bothwell M/ 10- Hunter A/ 20- Slawson J/ 22- Anderson J/ 45- Mounce C/	02:05	0-2	-2	0.0000	2	0	1	0	0.0000
3- Bothwell M/ 10- Hunter A/ 13- Hien G/ 22- Anderson J/ 45- Mounce C/	01:55	9-8	1	4.6957	4	0	0	1	1.5306
3- Bothwell M/ 4- Gurley N/ 5- Foster M/ 22- Anderson J/ 45- Mounce C/	01:52	4-5	-1	2.1429	1	0	1	1	1.0000
1- Pugh J/ 3- Bothwell M/ 13- Hien G/ 22- Anderson J/ 45- Mounce C/	01:40	0-4	-4	0.0000	2	0	1	0	0.0000
3- Bothwell M/ 10- Hunter A/ 13- Hien G/ 20- Slawson J/ 22- Anderson J/	01:29	0-8	-8	0.0000	0	0	1	0	0.0000
2- Kenney C/ 3- Bothwell M/ 4- Gurley N/ 22- Anderson J/ 45- Mounce C/	01:22	0-0	0	0.0000	1	1	1	0	0.0000
4- Gurley N/ 5- Foster M/ 10- Hunter A/ 20- Slawson J/ 22- Anderson J/	01:08	3-3	0	2.6471	0	0	0	1	1.5000
3- Bothwell M/ 4- Gurley N/ 10- Hunter A/ 20- Slawson J/ 22- Anderson J/	01:08	0-0	0	0.0000	1	0	0	0	0.0000
3- Bothwell M/ 5- Foster M/ 10- Hunter A/ 13- Hien G/ 45- Mounce C/	01:06	0-2	-2	0.0000	0	0	1	0	0.0000
1- Pugh J/ 4- Gurley N/ 10- Hunter A/ 20- Slawson J/ 22- Anderson J/	00:43	0-3	-3	0.0000	0	0	1	0	0.0000
3- Bothwell M/ 4- Gurley N/ 5- Foster M/ 10- Hunter A/ 45- Mounce C/	00:00	0-1	-1	NaN	0	0	0	0	0.0000



**Furman at ETSU**

01/23/21 Freedom Hall, Johnson City  
2020-21 Men's Basketball

**Game Time:** 4:00 PM  
**Game Duration:** 2:02  
**Attendance:** 720

**Officials:** Nathan Quick, Arthur Vault, Byron Evans

**ETSU**

Lineup	Time	Score	Score Diff	Pts/Min	Reb	Stl	Tov	Ass	PPP
0- Adheke S/ 1- Smith Jr. S/ 12- Monsanto D/ 23- Patterson V/ 25- Brewer L/	08:45	13-10	3	1.4857	9	2	3	3	1.0833
0- Adheke S/ 4- Sloan D/ 12- Monsanto D/ 14- Brewer T/ 25- Brewer L/	06:12	20-4	16	3.2258	5	3	0	3	1.6556
0- Adheke S/ 1- Smith Jr. S/ 4- Sloan D/ 12- Monsanto D/ 14- Brewer T/	04:20	6-9	-3	1.3846	2	0	2	2	1.0000
0- Adheke S/ 4- Sloan D/ 14- Brewer T/ 23- Patterson V/ 25- Brewer L/	04:11	12-8	4	2.8685	5	0	2	2	1.3393
0- Adheke S/ 1- Smith Jr. S/ 4- Sloan D/ 12- Monsanto D/ 23- Patterson V/	02:43	0-4	-4	0.0000	5	0	3	0	0.0000
0- Adheke S/ 4- Sloan D/ 12- Monsanto D/ 14- Brewer T/ 23- Patterson V/	02:23	2-1	1	0.8392	2	1	1	0	0.6667
0- Adheke S/ 4- Sloan D/ 12- Monsanto D/ 23- Patterson V/ 25- Brewer L/	02:21	3-10	-7	1.2766	1	0	0	0	1.0000
0- Adheke S/ 1- Smith Jr. S/ 12- Monsanto D/ 14- Brewer T/ 25- Brewer L/	01:39	4-4	0	2.4242	0	0	0	2	1.3333
4- Sloan D/ 14- Brewer T/ 23- Patterson V/ 25- Brewer L/ 33- Weber C/	01:23	2-0	2	1.4458	2	0	0	0	1.0000
4- Sloan D/ 12- Monsanto D/ 14- Brewer T/ 25- Brewer L/ 33- Weber C/	01:21	6-0	6	4.4444	2	0	1	1	2.4590
1- Smith Jr. S/ 4- Sloan D/ 14- Brewer T/ 23- Patterson V/ 33- Weber C/	01:14	2-4	-2	1.6216	1	0	0	0	1.0000
12- Monsanto D/ 14- Brewer T/ 23- Patterson V/ 25- Brewer L/ 33- Weber C/	01:08	0-0	0	0.0000	2	0	0	0	0.0000
0- Adheke S/ 3- Harris T/ 4- Sloan D/ 12- Monsanto D/ 23- Patterson V/	01:07	0-2	-2	0.0000	1	0	2	0	0.0000
0- Adheke S/ 1- Smith Jr. S/ 3- Harris T/ 12- Monsanto D/ 23- Patterson V/	00:41	0-3	-3	0.0000	1	0	0	0	0.0000
0- Adheke S/ 12- Monsanto D/ 14- Brewer T/ 23- Patterson V/ 25- Brewer L/	00:19	1-3	-2	3.1579	0	0	0	0	2.2727
1- Smith Jr. S/ 4- Sloan D/ 12- Monsanto D/ 14- Brewer T/ 33- Weber C/	00:13	0-0	0	0.0000	0	0	0	0	0.0000
1- Smith Jr. S/ 4- Sloan D/ 12- Monsanto D/ 14- Brewer T/ 25- Brewer L/	00:00	0-0	0	NaN	0	0	1	0	0.0000