



ETSU at Western Caro.

01/20/21 Ramsey Center, Cullowhee
2020-21 Men's Basketball

Officials: Todd Austin, Zelton Steele, Mat Jarman

ETSU - 59

Record: 8-5 (4-1)

NO.	Name	F	Min	FG			3P			FT			Rebounds			Fouls		TP	AS	TO	ST	Blocks		+/-
				M-A	M-A	M-A	OR	DR	TOT	PF	FD	OR	DR	TOT	BS	BA								
0	Silas Adheke	F	24:24	0-0	0-0	0-0	0	3	3	4	1	0	0	0	0	0	1	3	1	0	6			
23	Vonnie Patterson	F	28:29	3-5	1-1	2-2	1	4	5	4	1	9	3	3	0	0	1	8						
1	Serrel Smith Jr.	G	22:16	1-6	0-2	0-0	1	4	5	1	1	2	0	2	0	0	1	3						
12	Damari Monsanto	G	36:15	3-10	1-5	2-3	3	10	13	2	4	9	0	0	1	0	0	19						
25	Ledarius Brewer	G	23:48	7-15	1-5	0-0	0	3	3	2	3	15	0	1	1	0	1	6						
4	David Sloan		29:45	4-11	1-2	3-4	2	0	2	1	3	12	5	3	1	0	0	14						
14	Ty Brewer		23:30	4-7	0-1	4-6	1	6	7	1	4	12	1	0	2	0	1	7						
33	Charlie Weber		08:13	0-1	0-1	0-0	0	2	2	2	0	0	0	1	0	0	0	-5						
3	Truth Harris		01:42	0-1	0-0	0-0	0	0	0	0	0	0	0	0	0	0	0	-3						
15	Richard Amaefule		01:38	0-0	0-0	0-1	0	0	0	1	1	0	0	1	0	0	0	0						
Team							0	1	1				0			1								
Totals				22-56	4-17	11-16	8	33	41	18	18	59	9	13	8	1	4	11						

Shooting By Period		
1st FG%	10-26	38.5%
3PT%	3-10	30.0%
FT%	4-6	66.7%
2nd FG%	12-30	40.0%
3PT%	1-7	14.3%
FT%	7-10	70%
GM FG%	22-56	39.3%
3PT%	4-17	23.5%
FT%	11-16	68.8%

Dead Ball Rebounds: 4, 1

Technical Fouls::NONE

Western Caro. - 48

Record: 7-6 (0-4)

NO.	Name	F	Min	FG			3P			FT			Rebounds			Fouls		TP	AS	TO	ST	Blocks		+/-
				M-A	M-A	M-A	OR	DR	TOT	PF	FD	OR	DR	TOT	BS	BA								
12	Cory Hightower	F	25:07	1-5	0-3	2-2	0	6	6	4	1	4	1	2	0	0	0	0	-6					
13	Xavier Cork	F	27:03	6-11	0-0	1-2	3	2	5	2	2	13	2	1	0	1	0	-6						
2	Matt Halvorsen	G	38:54	3-12	3-11	3-3	0	1	1	2	3	12	0	2	1	0	0	-13						
4	Tyler Harris	G	27:08	1-5	1-4	0-2	4	7	11	1	1	3	1	3	0	3	0	-3						
11	Mason Faulkner	G	37:00	4-13	0-4	1-2	1	4	5	3	4	9	4	4	2	0	1	-4						
14	Kameron Gibson		22:24	1-5	0-4	0-0	0	0	0	2	1	2	2	2	0	0	0	-11						
25	Ahmir Langlais		12:57	0-3	0-0	2-4	1	4	5	1	4	2	0	0	0	0	0	-5						
1	Travion McCray		05:46	0-0	0-0	0-0	0	2	2	3	0	0	0	0	0	0	0	-6						
21	Marcus Thomas		03:41	0-0	0-0	3-4	0	1	1	0	2	3	0	0	0	0	0	-1						
Team							0	0	0				0			1								
Totals				16-54	4-26	12-19	9	27	36	18	18	48	10	15	3	4	1	-11						

Shooting By Period		
1st FG%	9-27	33.3%
3PT%	2-13	15.4%
FT%	8-9	88.9%
2nd FG%	7-27	25.9%
3PT%	2-13	15.4%
FT%	4-10	40%
GM FG%	16-54	29.6%
3PT%	4-26	15.4%
FT%	12-19	63.2%

Dead Ball Rebounds: 2, 0

Technical Fouls::NONE

	ETSU	WCU
Biggest lead	11 (2 nd 0:26)	13 (1 st 7:46)
Best Scoring Run	13 (1 st 3:41)	9 (1 st 13:21)
Lead Changes	3	
Times Tied	4	
Time with Lead	12:13	24:03

Points from	ETSU	WCU
Turnovers	13	13
Paint	30	24
Second Chance	8	8
Fast Breaks	9	5
Bench	24	7

	Period by Period Scoring		
	1st	2nd	TOT
ETSU	27	32	59
WCU	28	20	48



Period 1

Quarter Starters:

WCU	2 Halvorsen M	4 Harris T	11 Faulkner M	12 Hightower C	13 Cork X
ETSU	0 Adheke S	1 Smith Jr. S	12 Monsanto D	23 Patterson V	25 Brewer L

Game Time	WCU	Score	Diff	ETSU
20:00	13 CORK X jumpball won			0 ADHEKE S jumpball lost
19:28	turnover shot clock (1)			
19:09				23 PATTERSON V 2pt FG from turnover in the paint, jump shot missed
19:06	4 HARRIS T defensive rebound (1)			
18:48	12 HIGHTOWER C foul offensive (1 - 1)			25 BREWER L foul drawn (1)
18:48	12 HIGHTOWER C turnover offensive (1)			
18:34				25 BREWER L turnover bad pass (1)
18:17	2 HALVORSEN M 3pt FG from turnover, jump shot missed			
18:09				25 BREWER L defensive rebound (1)
18:08	2 HALVORSEN M steal (1)			23 PATTERSON V turnover lost ball (1)
18:03	2 HALVORSEN M foul drawn (1)			25 BREWER L foul shooting (1 - 1)
18:02	2 HALVORSEN M free throw fast break 1 - 3 made (1)	1-0	1	
18:02	2 HALVORSEN M free throw fast break 2 - 3 made (2)	2-0	2	
18:02	2 HALVORSEN M free throw fast break 3 - 3 made (3)	3-0	3	
17:43		3-2	1	25 BREWER L 2pt FG in the paint, driving layup made (2)
17:28	4 HARRIS T 3pt FG , jump shot made (3)	6-2	4	
17:28	12 HIGHTOWER C assist (1)			
17:05				25 BREWER L 3pt FG , jump shot missed
17:01	12 HIGHTOWER C defensive rebound (1)			
16:50	13 CORK X turnover travel (1)			
16:50	12 HIGHTOWER C substitution out			
16:50	13 CORK X substitution out			
16:50	14 GIBSON K substitution in			
16:50	25 LANGLAIS A substitution in			
16:37				23 PATTERSON V 2pt FG from turnover in the paint, jump shot blocked
16:37	4 HARRIS T block (1)			
16:33	4 HARRIS T defensive rebound (2)			
16:16	14 GIBSON K turnover lost ball (1)			25 BREWER L steal (1)
16:05				25 BREWER L 3pt FG from turnover, jump shot missed
16:01	11 FAULKNER M defensive rebound (1)			
15:47	14 GIBSON K 3pt FG , jump shot missed			
15:43	4 HARRIS T offensive rebound (3)			
15:40	4 HARRIS T 3pt FG second chance, jump shot missed			
15:37				23 PATTERSON V defensive rebound (1)
15:28				1 SMITH JR. S 3pt FG , jump shot missed
15:19	11 FAULKNER M defensive rebound (2)			
15:14	2 HALVORSEN M 3pt FG , jump shot missed			
15:10	25 LANGLAIS A offensive rebound (1)			
15:10	25 LANGLAIS A foul drawn (1)			23 PATTERSON V foul shooting (1 - 2)
15:10				Timeout media
15:10	4 HARRIS T substitution out			
15:10	12 HIGHTOWER C substitution in			



Game Time	WCU	Score	Diff	ETSU
15:10				12 MONSANTO D substitution out
15:10				23 PATTERSON V substitution out
15:10				4 SLOAN D substitution in
15:10				14 BREWER T substitution in
15:10	25 LANGLAIS A free throw 1 - 2 made (1)	7-2	5	
15:10	25 LANGLAIS A free throw 2 - 2 made (2)	8-2	6	
14:50	25 LANGLAIS A foul shooting (1 - 2)			14 BREWER T foul drawn (1)
14:50				14 BREWER T free throw 1 - 2 missed
14:50				offensive dead ball rebound (1)
14:50	25 LANGLAIS A substitution out			
14:50	13 CORK X substitution in			
14:50				14 BREWER T free throw 2 - 2 missed
14:49	12 HIGHTOWER C defensive rebound (2)			
14:43	14 GIBSON K foul drawn (1)			25 BREWER L foul personal (2 - 3)
14:43				25 BREWER L substitution out
14:43				12 MONSANTO D substitution in
14:34	12 HIGHTOWER C 2pt FG outside the paint, pull up jump shot missed			
14:31				1 SMITH JR. S defensive rebound (1)
14:24				4 SLOAN D 2pt FG in the paint, jump shot missed
14:22	12 HIGHTOWER C defensive rebound (3)			
14:11	11 FAULKNER M 2pt FG in the paint, driving layup made (2)	10-2	8	
13:53				14 BREWER T 3pt FG , jump shot missed
13:49	11 FAULKNER M defensive rebound (3)			
13:44	11 FAULKNER M turnover lost ball (1)			4 SLOAN D steal (1)
13:39				1 SMITH JR. S turnover travel (1)
13:39	2 HALVORSEN M substitution out			
13:39	4 HARRIS T substitution in			
13:22	13 CORK X 2pt FG from turnover in the paint, layup missed			
13:21	13 CORK X offensive rebound (1)			
13:21	13 CORK X 2pt FG from turnover second chance in the paint, layup made (2)	12-2	10	
13:21				Timeout 60 Sec
13:21	11 FAULKNER M substitution out			
13:21	14 GIBSON K substitution out			
13:21	1 MCCRAY T substitution in			
13:21	2 HALVORSEN M substitution in			
13:00				12 MONSANTO D 3pt FG , jump shot missed
12:55	1 MCCRAY T defensive rebound (1)			
12:47	2 HALVORSEN M turnover lost ball (1)			0 ADHEKE S steal (1)
12:39		12-4	8	4 SLOAN D 2pt FG fast break from turnover in the paint, driving layup made (2)
12:15	4 HARRIS T turnover lost ball (1)			0 ADHEKE S steal (2)
12:09		12-6	6	14 BREWER T 2pt FG fast break from turnover in the paint, dunk, made (2)
12:08	Timeout 30 Sec			
12:08				Timeout media
12:08	12 HIGHTOWER C substitution out			
12:08	13 CORK X substitution out			
12:08	11 FAULKNER M substitution in			



ETSU at Western Caro.

01/20/21 Ramsey Center, Cullowhee
2020-21 Men's Basketball

Officials: Todd Austin, Zelton Steele, Mat Jarman

Game Time	WCU	Score	Diff	ETSU
12:08	25 LANGLAIS A substitution in			
12:08				0 ADHEKE S substitution out
12:08				33 WEBER C substitution in
11:50	11 FAULKNER M 2pt FG in the paint, driving layup made (4)	14-6	8	
11:37				33 WEBER C 3pt FG , jump shot missed
11:32	11 FAULKNER M defensive rebound (4)			
11:12	25 LANGLAIS A 2pt FG in the paint, jump shot missed			
11:09				33 WEBER C defensive rebound (1)
11:02				4 SLOAN D 2pt FG in the paint, driving layup missed
10:59	25 LANGLAIS A defensive rebound (2)			
10:32	11 FAULKNER M 2pt FG in the paint, driving layup missed			
10:30				33 WEBER C defensive rebound (2)
10:26	1 MCCRAY T foul shooting (1 - 3)			4 SLOAN D foul drawn (1)
10:26		14-7	7	4 SLOAN D free throw fast break 1 - 2 made (3)
10:26	1 MCCRAY T substitution out			
10:26	4 HARRIS T substitution out			
10:26	25 LANGLAIS A substitution out			
10:26	12 HIGHTOWER C substitution in			
10:26	13 CORK X substitution in			
10:26	14 GIBSON K substitution in			
10:26				1 SMITH JR. S substitution out
10:26				12 MONSANTO D substitution out
10:26				3 HARRIS T substitution in
10:26				23 PATTERSON V substitution in
10:26		14-8	6	4 SLOAN D free throw fast break 2 - 2 made (4)
10:13	14 GIBSON K 3pt FG , jump shot missed			
10:08	11 FAULKNER M offensive rebound (5)			
10:04	12 HIGHTOWER C 2pt FG second chance in the paint, layup made (2)	16-8	8	
10:04	11 FAULKNER M assist (1)			
09:38				14 BREWER T 2pt FG in the paint, layup blocked
09:38	13 CORK X block (1)			
09:33	13 CORK X defensive rebound (2)			
09:29	11 FAULKNER M 2pt FG outside the paint, pull up jump shot missed			
09:25				23 PATTERSON V defensive rebound (2)
09:14				3 HARRIS T 2pt FG in the paint, layup missed
09:12	12 HIGHTOWER C defensive rebound (4)			
09:05	13 CORK X 2pt FG in the paint, driving layup made (4)	18-8	10	
09:05	11 FAULKNER M assist (2)			
08:44	2 HALVORSEN M substitution out			
08:44	13 CORK X substitution out			
08:44	4 HARRIS T substitution in			
08:44	25 LANGLAIS A substitution in			
08:44				3 HARRIS T substitution out
08:44				33 WEBER C substitution out
08:44				0 ADHEKE S substitution in
08:44				12 MONSANTO D substitution in
08:31				turnover shot clock (4)
08:13	12 HIGHTOWER C 3pt FG from turnover, jump shot missed			



ETSU at Western Caro.

01/20/21 Ramsey Center, Cullowhee
2020-21 Men's Basketball

Officials: Todd Austin, Zelton Steele, Mat Jarman

Game Time	WCU	Score	Diff	ETSU
08:10				12 MONSANTO D defensive rebound (1)
08:05				12 MONSANTO D 2pt FG outside the paint, pull up jump shot missed
08:01	4 HARRIS T defensive rebound (4)			
07:56	25 LANGLAIS A foul drawn (2)			12 MONSANTO D foul personal (1 - 4)
07:56	Timeout media			
07:56	14 GIBSON K substitution out			
07:56	2 HALVORSEN M substitution in			
07:46	2 HALVORSEN M 3pt FG , pull up jump shot made (6)	21-8	13	
07:28		21-11	10	4 SLOAN D 3pt FG , jump shot made (7)
07:28				14 BREWER T assist (1)
07:17	11 FAULKNER M foul drawn (1)			0 ADHEKE S foul personal (1 - 5)
07:17	12 HIGHTOWER C substitution out			
07:17	14 GIBSON K substitution in			
07:17				14 BREWER T substitution out
07:17				1 SMITH JR. S substitution in
07:03	2 HALVORSEN M 3pt FG , jump shot missed			
06:59				0 ADHEKE S defensive rebound (1)
06:49		21-14	7	23 PATTERSON V 3pt FG , jump shot made (3)
06:49				4 SLOAN D assist (1)
06:24	25 LANGLAIS A 2pt FG in the paint, jump shot missed			
06:22				1 SMITH JR. S defensive rebound (2)
06:05		21-16	5	1 SMITH JR. S 2pt FG outside the paint, pull up jump shot made (2)
05:44	11 FAULKNER M 3pt FG , jump shot missed			
05:40				12 MONSANTO D defensive rebound (2)
05:34	11 FAULKNER M steal (1)			4 SLOAN D turnover bad pass (1)
05:17	2 HALVORSEN M foul drawn (2)			1 SMITH JR. S foul personal (1 - 6)
05:17	4 HARRIS T substitution out			
05:17	11 FAULKNER M substitution out			
05:17	25 LANGLAIS A substitution out			
05:17	1 MCCRAY T substitution in			
05:17	12 HIGHTOWER C substitution in			
05:17	13 CORK X substitution in			
04:58	12 HIGHTOWER C 3pt FG from turnover, pull up jump shot missed			
04:53				23 PATTERSON V defensive rebound (3)
04:47		21-19	2	12 MONSANTO D 3pt FG , jump shot made (3)
04:47				23 PATTERSON V assist (1)
04:28	2 HALVORSEN M 2pt FG in the paint, pull up jump shot missed			
04:26				12 MONSANTO D defensive rebound (3)
04:22				12 MONSANTO D 3pt FG , jump shot missed
04:18	12 HIGHTOWER C defensive rebound (5)			
04:07	2 HALVORSEN M foul offensive (1 - 4)			1 SMITH JR. S foul drawn (1)
04:07	2 HALVORSEN M turnover offensive (2)			
04:07	14 GIBSON K substitution out			
04:07	11 FAULKNER M substitution in			
03:41	1 MCCRAY T foul shooting (2 - 5)			23 PATTERSON V foul drawn (1)
03:41	Timeout media			
03:41	1 MCCRAY T substitution out			



ETSU at Western Caro.

01/20/21 Ramsey Center, Cullowhee
2020-21 Men's Basketball

Officials: Todd Austin, Zelton Steele, Mat Jarman

Game Time	WCU	Score	Diff	ETSU
03:41	21 THOMAS M substitution in			
03:41		21-20	1	23 PATTERSON V free throw 1 - 2 made (4)
03:41		21-21	0	23 PATTERSON V free throw 2 - 2 made (5)
03:17	11 FAULKNER M 2pt FG in the paint, layup made (6)	23-21	2	
03:17	13 CORK X assist (1)			
02:57		23-23	0	12 MONSANTO D 2pt FG in the paint, turnaround jump shot made (5)
02:35	11 FAULKNER M 3pt FG , jump shot missed			
02:31				0 ADHEKE S defensive rebound (2)
02:23				23 PATTERSON V turnover travel (2)
02:06	12 HIGHTOWER C foul offensive (2 - 6)			4 SLOAN D foul drawn (2)
02:06	12 HIGHTOWER C turnover offensive (2)			
02:06	12 HIGHTOWER C substitution out			
02:06	4 HARRIS T substitution in			
01:50		23-25	-2	4 SLOAN D 2pt FG from turnover outside the paint, pull up jump shot made (9)
01:36	21 THOMAS M foul drawn (1)			12 MONSANTO D foul personal (2 - 7)
01:36				12 MONSANTO D substitution out
01:36				14 BREWER T substitution in
01:36	21 THOMAS M 1&1 free throw 1 made (1)	24-25	-1	
01:36	21 THOMAS M 1&1 free throw 2 missed			
01:33				14 BREWER T defensive rebound (1)
01:23		24-27	-3	4 SLOAN D 2pt FG in the paint, driving layup made (11)
01:12	13 CORK X 2pt FG in the paint, dunk, made (6)	26-27	-1	
01:12	11 FAULKNER M assist (3)			
00:47				1 SMITH JR. S 2pt FG in the paint, layup blocked
00:47	4 HARRIS T block (2)			
00:45				1 SMITH JR. S offensive rebound (3)
00:45	jump ball situation			
00:39				4 SLOAN D turnover travel (2)
00:19	11 FAULKNER M turnover bad pass (2)			14 BREWER T steal (1)
00:13				4 SLOAN D 2pt FG from turnover in the paint, layup missed
00:12	21 THOMAS M defensive rebound (1)			
00:12	21 THOMAS M foul drawn (2)			14 BREWER T foul personal (1 - 8)
00:12				0 ADHEKE S substitution out
00:12				23 PATTERSON V substitution out
00:12				25 BREWER L substitution in
00:12				33 WEBER C substitution in
00:12	21 THOMAS M 1&1 free throw 1 made (2)	27-27	0	
00:12	21 THOMAS M 1&1 free throw 2 made (3)	28-27	1	
00:00				1 SMITH JR. S turnover travel (2)
00:00				25 BREWER L substitution out
00:00				23 PATTERSON V substitution in
00:00	11 FAULKNER M 3pt FG from turnover, jump shot missed			
00:00				defensive dead ball rebound (2)
END OF PERIOD				
WCU 28-27 ETSU				



ETSU at Western Caro.

01/20/21 Ramsey Center, Cullowhee
2020-21 Men's Basketball

Officials: Todd Austin, Zelton Steele, Mat Jarman

ETSU - 27

NO.	Name	F	Min	FG	3P	FT	Rebounds			Fouls		TP	AS	TO	ST	Blocks		+/-
				M-A	M-A	M-A	OR	DR	TOT	PF	FD					BS	BA	
0	Silas Adheke	F	16:24	0-0	0-0	0-0	0	2	2	1	0	0	0	0	2	0	0	5
23	Vonnie Patterson	F	15:05	1-3	1-1	2-2	0	3	3	1	1	5	1	2	0	0	1	4
1	Serrel Smith Jr.	G	16:51	1-3	0-1	0-0	1	2	3	1	1	2	0	2	0	0	1	2
12	Damari Monsanto	G	16:15	2-5	1-3	0-0	0	3	3	2	0	5	0	0	0	0	0	7
25	Ledarius Brewer	G	05:28	1-3	0-2	0-0	0	1	1	2	1	2	0	1	1	0	0	-8
4	David Sloan		15:10	4-7	1-1	2-2	0	0	0	0	2	11	1	2	1	0	0	3
14	Ty Brewer		09:29	1-3	0-1	0-2	0	1	1	1	1	2	1	0	1	0	1	-9
33	Charlie Weber		03:36	0-1	0-1	0-0	0	2	2	0	0	0	0	0	0	0	0	-6
3	Truth Harris		01:42	0-1	0-0	0-0	0	0	0	0	0	0	0	0	0	0	0	-3
Team							0	0	0			0		1				
Totals				10-26	3-10	4-6	1	14	15	8	6	27	3	8	5	0	3	-1

Shooting By Period		
1 st FG%	10-26	38.5%
3PT%	3-10	30.0%
FT%	4-6	66.7%
GM FG%	10-26	38.5%
3PT%	3-10	30.0%
FT%	4-6	66.7%

Dead Ball Rebounds: 1, 1

Technical Fouls::NONE

Western Caro. - 28

NO.	Name	F	Min	FG	3P	FT	Rebounds			Fouls		TP	AS	TO	ST	Blocks		+/-
				M-A	M-A	M-A	OR	DR	TOT	PF	FD					BS	BA	
12	Cory Hightower	F	12:32	1-4	0-2	0-0	0	5	5	2	0	2	1	2	0	0	0	4
13	Xavier Cork	F	12:51	3-4	0-0	0-0	1	1	2	0	0	6	1	1	0	1	0	3
2	Matt Halvorsen	G	18:54	1-5	1-4	3-3	0	0	0	1	2	6	0	2	1	0	0	-1
4	Tyler Harris	G	13:36	1-2	1-2	0-0	1	3	4	0	0	3	0	1	0	2	0	-1
11	Mason Faulkner	G	17:37	3-8	0-3	0-0	1	4	5	0	1	6	3	2	1	0	0	8
14	Kameron Gibson		09:09	0-2	0-2	0-0	0	0	0	0	1	0	0	1	0	0	0	1
25	Ahmir Langlais		07:09	0-2	0-0	2-2	1	1	2	1	2	2	0	0	0	0	0	-2
1	Travion McCray		04:31	0-0	0-0	0-0	0	1	1	2	0	0	0	0	0	0	0	-6
21	Marcus Thomas		03:41	0-0	0-0	3-4	0	1	1	0	2	3	0	0	0	0	0	-1
Team							0	0	0			0		1				
Totals				9-27	2-13	8-9	4	16	20	6	8	28	5	10	2	3	0	1

Shooting By Period		
1 st FG%	9-27	33.3%
3PT%	2-13	15.4%
FT%	8-9	88.9%
GM FG%	9-27	33.3%
3PT%	2-13	15.4%
FT%	8-9	88.9%

Dead Ball Rebounds: 0, 0

Technical Fouls::NONE

	ETSU	WCU
Biggest lead	3 (1 st 1:23)	13 (1 st 7:46)
Best Scoring Run	13(1 st 3:41)	9(1 st 13:21)
Lead Changes	2	
Times Tied	3	
Time with Lead	01:38	14:53

Points from	ETSU	WCU
Turnovers	8	5
Paint	10	14
Second Chance	0	6
Fast Breaks	6	5
Bench	13	5

	Period by Period Scoring		
	1st	2nd	TOT
ETSU	27	32	59
WCU	28	20	48



Period 2

Quarter Starters:

WCU	2 Halvorsen M	4 Harris T	11 Faulkner M	12 Hightower C	13 Cork X
ETSU	0 Adheke S	1 Smith Jr. S	12 Monsanto D	23 Patterson V	25 Brewer L

Game Time	WCU	Score	Diff	ETSU
20:00	21 THOMAS M substitution out			
20:00	12 HIGHTOWER C substitution in			
20:00				4 SLOAN D substitution out
20:00				14 BREWER T substitution out
20:00				33 WEBER C substitution out
20:00				0 ADHEKE S substitution in
20:00				12 MONSANTO D substitution in
20:00				25 BREWER L substitution in
19:35	2 HALVORSEN M 3pt FG , jump shot missed			
19:31				1 SMITH JR. S defensive rebound (4)
19:19				25 BREWER L 2pt FG in the paint, driving layup missed
19:18				offensive dead ball rebound (3)
19:18	4 HARRIS T foul personal (1 - 1)			12 MONSANTO D foul drawn (1)
19:11				0 ADHEKE S turnover dribbling violation (1)
18:56	13 CORK X 2pt FG from turnover in the paint, turnaround jump shot made (8)	30-27	3	
18:56	13 CORK X foul drawn (1)			0 ADHEKE S foul shooting (2 - 1)
18:56	13 CORK X free throw 1 - 1 made (9)	31-27	4	
18:37				25 BREWER L 2pt FG in the paint, dunk, missed
18:34				23 PATTERSON V offensive rebound (4)
18:30				25 BREWER L 3pt FG second chance, jump shot missed
18:28	4 HARRIS T defensive rebound (5)			
18:23	4 HARRIS T turnover bad pass (2)			
17:59		31-29	2	23 PATTERSON V 2pt FG from turnover in the paint, layup made (7)
17:47	11 FAULKNER M 2pt FG outside the paint, jump shot blocked			
17:47				0 ADHEKE S block (1)
17:42	4 HARRIS T offensive rebound (6)			
17:38	4 HARRIS T turnover bad pass (3)			
17:37	13 CORK X substitution out			
17:37	25 LANGLAIS A substitution in			
17:37				0 ADHEKE S substitution out
17:37				33 WEBER C substitution in
17:21				1 SMITH JR. S 2pt FG from turnover outside the paint, pull up jump shot missed
17:17	25 LANGLAIS A defensive rebound (3)			
17:10	2 HALVORSEN M 3pt FG , jump shot missed			
17:05				25 BREWER L defensive rebound (2)
17:03	2 HALVORSEN M foul drawn (3)			23 PATTERSON V foul offensive (2 - 2)
17:03				23 PATTERSON V turnover offensive (3)
17:03				1 SMITH JR. S substitution out
17:03				4 SLOAN D substitution in
16:35	2 HALVORSEN M 3pt FG from turnover, jump shot made (9)	34-29	5	
16:35	4 HARRIS T assist (1)			



ETSU at Western Caro.

01/20/21 Ramsey Center, Cullowhee
2020-21 Men's Basketball

Officials: Todd Austin, Zelton Steele, Mat Jarman

Game Time	WCU	Score	Diff	ETSU
16:06	25 LANGLAIS A foul drawn (3)			33 WEBER C foul offensive (1 - 3)
16:06				33 WEBER C turnover offensive (1)
16:06	12 HIGHTOWER C substitution out			
16:06	14 GIBSON K substitution in			
16:06				33 WEBER C substitution out
16:06				0 ADHEKE S substitution in
15:44	11 FAULKNER M turnover bad pass (3)			0 ADHEKE S steal (3)
15:37				25 BREWER L 3pt FG from turnover, jump shot missed
15:33				12 MONSANTO D offensive rebound (4)
15:32				4 SLOAN D 3pt FG from turnover second chance, jump shot missed
15:28				4 SLOAN D offensive rebound (1)
15:22		34-31	3	25 BREWER L 2pt FG from turnover second chance in the paint, driving layup made (4)
15:01	11 FAULKNER M 3pt FG , jump shot missed			
14:59				12 MONSANTO D defensive rebound (5)
14:55	11 FAULKNER M foul personal (1 - 2)			25 BREWER L foul drawn (2)
14:55	Timeout media			
14:55	25 LANGLAIS A substitution out			
14:55	13 CORK X substitution in			
14:43				25 BREWER L 2pt FG in the paint, layup missed
14:41	4 HARRIS T defensive rebound (7)			
14:20	13 CORK X 2pt FG in the paint, layup made (11)	36-31	5	
14:20	11 FAULKNER M assist (4)			
14:01	14 GIBSON K foul personal (1 - 3)			0 ADHEKE S foul drawn (1)
14:01	4 HARRIS T substitution out			
14:01	12 HIGHTOWER C substitution in			
14:01				23 PATTERSON V substitution out
14:01				14 BREWER T substitution in
13:54				12 MONSANTO D 3pt FG , jump shot missed
13:51				14 BREWER T offensive rebound (2)
13:48				14 BREWER T 2pt FG second chance outside the paint, jump shot missed
13:42				12 MONSANTO D offensive rebound (6)
13:42				12 MONSANTO D 2pt FG second chance in the paint, layup missed
13:40				12 MONSANTO D offensive rebound (7)
13:40		36-33	3	12 MONSANTO D 2pt FG second chance in the paint, layup made (7)
13:32	11 FAULKNER M foul drawn (2)			0 ADHEKE S foul personal (3 - 4)
13:22	2 HALVORSEN M 3pt FG , pull up jump shot missed			
13:18				25 BREWER L defensive rebound (3)
13:07				4 SLOAN D 2pt FG outside the paint, pull up jump shot missed
13:03	13 CORK X defensive rebound (3)			
12:50	13 CORK X 2pt FG in the paint, turnaround jump shot missed			
12:47				12 MONSANTO D defensive rebound (8)
12:40		36-35	1	25 BREWER L 2pt FG in the paint, pull up jump shot made (6)
12:20	11 FAULKNER M 2pt FG in the paint, floating jump shot missed			
12:14				0 ADHEKE S defensive rebound (3)
12:09	12 HIGHTOWER C foul personal (3 - 4)			12 MONSANTO D foul drawn (2)
12:09	11 FAULKNER M substitution out			



ETSU at Western Caro.

01/20/21 Ramsey Center, Cullowhee
2020-21 Men's Basketball

Officials: Todd Austin, Zelton Steele, Mat Jarman

Game Time	WCU	Score	Diff	ETSU
12:09	12 HIGHTOWER C substitution out			
12:09	13 CORK X substitution out			
12:09	1 MCCRAY T substitution in			
12:09	4 HARRIS T substitution in			
12:09	25 LANGLAIS A substitution in			
12:09				0 ADHEKE S substitution out
12:09				33 WEBER C substitution in
12:01	14 GIBSON K foul personal (2 - 5)			14 BREWER T foul drawn (2)
12:01				4 SLOAN D substitution out
12:01				1 SMITH JR. S substitution in
11:56				12 MONSANTO D 2pt FG in the paint, jump shot missed
11:52	25 LANGLAIS A defensive rebound (4)			
11:42	14 GIBSON K turnover bad pass (2)			12 MONSANTO D steal (1)
11:37				1 SMITH JR. S 2pt FG from turnover in the paint, driving layup missed
11:34	1 MCCRAY T defensive rebound (2)			
11:32	Timeout 30 Sec			
11:32	Timeout media			
11:32	14 GIBSON K substitution out			
11:32	11 FAULKNER M substitution in			
11:13	25 LANGLAIS A 2pt FG in the paint, dunk, missed			
11:07				1 SMITH JR. S defensive rebound (5)
10:54	1 MCCRAY T foul personal (3 - 6)			25 BREWER L foul drawn (3)
10:54	Timeout media			
10:54	1 MCCRAY T substitution out			
10:54	12 HIGHTOWER C substitution in			
10:50		36-37	-1	14 BREWER T 2pt FG in the paint, layup made (4)
10:19	4 HARRIS T 3pt FG , jump shot missed			
10:15				12 MONSANTO D defensive rebound (9)
09:53				1 SMITH JR. S 3pt FG , jump shot missed
09:50	25 LANGLAIS A defensive rebound (5)			
09:33	25 LANGLAIS A foul drawn (4)			33 WEBER C foul shooting (2 - 5)
09:33	25 LANGLAIS A free throw 1 - 2 missed			
09:33	offensive dead ball rebound (1)			
09:33				1 SMITH JR. S substitution out
09:33				4 SLOAN D substitution in
09:33	25 LANGLAIS A free throw 2 - 2 missed			
09:30	4 HARRIS T offensive rebound (8)			
09:27	2 HALVORSEN M 3pt FG second chance, jump shot missed			
09:25				14 BREWER T defensive rebound (3)
09:22		36-39	-3	25 BREWER L 2pt FG fast break in the paint, dunk, made (8)
09:22				4 SLOAN D assist (2)
09:07	4 HARRIS T 3pt FG , pull up jump shot missed			
09:03				14 BREWER T defensive rebound (4)
09:03	jump ball situation			
09:03	25 LANGLAIS A substitution out			
09:03	13 CORK X substitution in			
09:03				33 WEBER C substitution out
09:03				15 AMAEFULE R substitution in



ETSU at Western Caro.

01/20/21 Ramsey Center, Cullowhee
2020-21 Men's Basketball

Officials: Todd Austin, Zelton Steele, Mat Jarman

Game Time	WCU	Score	Diff	ETSU
08:49				12 MONSANTO D 3pt FG , jump shot missed
08:45	4 HARRIS T defensive rebound (9)			
08:41	4 HARRIS T substitution out			
08:41	14 GIBSON K substitution in			
08:24	13 CORK X 2pt FG in the paint, layup made (13)	38-39	-1	
08:24	14 GIBSON K assist (1)			
08:12				4 SLOAN D 2pt FG in the paint, driving layup missed
08:11				offensive dead ball rebound (4)
08:11	13 CORK X foul personal (1 - 7)			15 AMAEFULE R foul drawn (1)
08:11				15 AMAEFULE R 1&1 free throw 1 missed
08:08				offensive dead ball rebound (5)
08:08	13 CORK X foul personal (2 - 8)			14 BREWER T foul drawn (3)
08:08		38-40	-2	14 BREWER T 1&1 free throw 1 made (5)
08:08		38-41	-3	14 BREWER T 1&1 free throw 2 made (6)
07:49	13 CORK X 2pt FG in the paint, hook shot missed			
07:45				12 MONSANTO D defensive rebound (10)
07:25	11 FAULKNER M foul drawn (3)			15 AMAEFULE R foul offensive (1 - 6)
07:25				15 AMAEFULE R turnover offensive (1)
07:25	Timeout media			
07:25				15 AMAEFULE R substitution out
07:25				25 BREWER L substitution out
07:25				0 ADHEKE S substitution in
07:25				23 PATTERSON V substitution in
07:15	12 HIGHTOWER C foul drawn (1)			23 PATTERSON V foul personal (3 - 7)
07:15	12 HIGHTOWER C 1&1 free throw 1 made (3)	39-41	-2	
07:15	12 HIGHTOWER C 1&1 free throw 2 made (4)	40-41	-1	
06:53	12 HIGHTOWER C foul personal (4 - 9)			12 MONSANTO D foul drawn (3)
06:53	12 HIGHTOWER C substitution out			
06:53	4 HARRIS T substitution in			
06:53				12 MONSANTO D 1&1 free throw 1 missed
06:50	4 HARRIS T defensive rebound (10)			
06:27	14 GIBSON K 3pt FG , pull up jump shot missed			
06:23				14 BREWER T defensive rebound (5)
06:11				4 SLOAN D 2pt FG in the paint, jump shot missed
06:09	2 HALVORSEN M defensive rebound (1)			
05:47	13 CORK X 2pt FG in the paint, layup missed			
05:45	4 HARRIS T offensive rebound (11)			
05:45	4 HARRIS T foul drawn (1)			0 ADHEKE S foul shooting (4 - 8)
05:45	4 HARRIS T free throw 1 - 2 missed			
05:45	offensive dead ball rebound (2)			
05:45				0 ADHEKE S substitution out
05:45				25 BREWER L substitution in
05:45	4 HARRIS T free throw 2 - 2 missed			
05:43				14 BREWER T defensive rebound (6)
05:30				25 BREWER L 2pt FG in the paint, driving layup blocked
05:30	4 HARRIS T block (3)			
05:24				4 SLOAN D offensive rebound (2)
05:22		40-43	-3	14 BREWER T 2pt FG second chance in the paint, dunk, made (8)



ETSU at Western Caro.

01/20/21 Ramsey Center, Cullowhee
2020-21 Men's Basketball

Officials: Todd Austin, Zelton Steele, Mat Jarman

Game Time	WCU	Score	Diff	ETSU
05:22				23 PATTERSON V assist (2)
04:51	14 GIBSON K 2pt FG in the paint, turnaround jump shot made (2)	42-43	-1	
04:50	Timeout 30 Sec			
04:37		42-45	-3	25 BREWER L 2pt FG in the paint, layup made (10)
04:37				4 SLOAN D assist (3)
04:26	2 HALVORSEN M 3pt FG , jump shot made (12)	45-45	0	
04:26	14 GIBSON K assist (2)			
04:11		45-48	-3	25 BREWER L 3pt FG , jump shot made (13)
04:11				4 SLOAN D assist (4)
03:49	2 HALVORSEN M 3pt FG , jump shot missed			
03:44	13 CORK X offensive rebound (4)			
03:43	11 FAULKNER M 2pt FG second chance in the paint, layup made (8)	47-48	-1	
03:43	13 CORK X assist (2)			
03:24		47-50	-3	14 BREWER T 2pt FG in the paint, layup made (10)
03:24				23 PATTERSON V assist (3)
03:11	4 HARRIS T 2pt FG in the paint, driving layup missed			
03:08				12 MONSANTO D defensive rebound (11)
02:48	2 HALVORSEN M foul shooting (2 - 10)			14 BREWER T foul drawn (4)
02:48	Timeout media			
02:48	4 HARRIS T substitution out			
02:48	12 HIGHTOWER C substitution in			
02:48		47-51	-4	14 BREWER T free throw 1 - 2 made (11)
02:48		47-52	-5	14 BREWER T free throw 2 - 2 made (12)
02:34	12 HIGHTOWER C 3pt FG , jump shot missed			
02:29	13 CORK X offensive rebound (5)			
02:21	13 CORK X 2pt FG second chance in the paint, layup missed			
02:20				defensive rebound (37)
02:09		47-54	-7	25 BREWER L 2pt FG outside the paint, jump shot made (15)
02:09				4 SLOAN D assist (5)
01:54	13 CORK X foul drawn (2)			23 PATTERSON V foul personal (4 - 9)
01:54	13 CORK X 1&1 free throw 1 missed			
01:52				12 MONSANTO D defensive rebound (12)
01:28		47-56	-9	23 PATTERSON V 2pt FG in the paint, driving layup made (9)
01:17	11 FAULKNER M foul drawn (4)			4 SLOAN D foul shooting (1 - 10)
01:17	11 FAULKNER M free throw 1 - 2 made (9)	48-56	-8	
01:17	11 FAULKNER M free throw 2 - 2 missed			
01:15				23 PATTERSON V defensive rebound (5)
01:01	11 FAULKNER M steal (2)			4 SLOAN D turnover lost ball (3)
00:55	11 FAULKNER M 2pt FG from turnover in the paint, driving layup missed			
00:52				12 MONSANTO D defensive rebound (13)
00:41	11 FAULKNER M foul personal (2 - 11)			12 MONSANTO D foul drawn (4)
00:41		48-57	-9	12 MONSANTO D free throw 1 - 2 made (8)
00:41		48-58	-10	12 MONSANTO D free throw 2 - 2 made (9)
00:33	11 FAULKNER M turnover lost ball (4)			14 BREWER T steal (2)
00:26	11 FAULKNER M foul personal (3 - 12)			4 SLOAN D foul drawn (3)
00:26		48-59	-11	4 SLOAN D free throw fast break 1 - 2 made (12)
00:26				4 SLOAN D free throw fast break 2 - 2 missed



Official Basketball Play by Play - Second Half

ETSU at Western Caro.

01/20/21 Ramsey Center, Cullowhee
2020-21 Men's Basketball

Game Time: 4:00 PM
Game Duration: 1:53

Officials: Todd Austin, Zelton Steele, Mat Jarman

Game Time	WCU	Score	Diff	ETSU
00:25	12 HIGHTOWER C defensive rebound (6)			
00:19	14 GIBSON K 3pt FG , jump shot missed			
00:16				14 BREWER T defensive rebound (7)
END OF GAME				
WCU 48-59 ETSU				



ETSU at Western Caro.

01/20/21 Ramsey Center, Cullowhee
2020-21 Men's Basketball

Officials: Todd Austin, Zelton Steele, Mat Jarman

ETSU - 32

NO.	Name	F	Min	FG	3P	FT	Rebounds			Fouls		TP	AS	TO	ST	Blocks		+/-
				M-A	M-A	M-A	OR	DR	TOT	PF	FD					BS	BA	
0	Silas Adheke	F	08:00	0-0	0-0	0-0	0	1	1	3	1	0	0	1	1	1	0	1
23	Vonnie Patterson	F	13:24	2-2	0-0	0-0	1	1	2	3	0	4	2	1	0	0	0	4
1	Serrel Smith Jr.	G	05:25	0-3	0-1	0-0	0	2	2	0	0	0	0	0	0	0	0	1
12	Damari Monsanto	G	20:00	1-5	0-2	2-3	3	7	10	0	4	4	0	0	1	0	0	12
25	Ledarius Brewer	G	18:20	6-12	1-3	0-0	0	2	2	0	2	13	0	0	0	0	1	14
33	Charlie Weber		04:37	0-0	0-0	0-0	0	0	0	2	0	0	0	1	0	0	0	1
4	David Sloan		14:35	0-4	0-1	1-2	2	0	2	1	1	1	4	1	0	0	0	11
14	Ty Brewer		14:01	3-4	0-0	4-4	1	5	6	0	3	10	0	0	1	0	0	16
15	Richard Amaefule		01:38	0-0	0-0	0-1	0	0	0	1	1	0	0	1	0	0	0	0
Team							0	1	1			0		0				
Totals				12-30	1-7	7-10	7	19	26	10	12	32	6	5	3	1	1	12

Shooting By Period		
2 nd FG%	12-30	40.0%
3PT%	1-7	14.3%
FT%	7-10	70%
GM FG%	12-30	40.0%
3PT%	1-7	14.3%
FT%	7-10	70.0%

Dead Ball Rebounds: 3, 0

Technical Fouls::NONE

Western Caro. - 20

NO.	Name	F	Min	FG	3P	FT	Rebounds			Fouls		TP	AS	TO	ST	Blocks		+/-
				M-A	M-A	M-A	OR	DR	TOT	PF	FD					BS	BA	
12	Cory Hightower	F	12:35	0-1	0-1	2-2	0	1	1	2	1	2	0	0	0	0	0	-10
13	Xavier Cork	F	14:12	3-7	0-0	1-2	2	1	3	2	2	7	1	0	0	0	0	-9
2	Matt Halvorsen	G	20:00	2-7	2-7	0-0	0	1	1	1	1	6	0	0	0	0	0	-12
4	Tyler Harris	G	13:32	0-3	0-2	0-2	3	4	7	1	1	0	1	2	0	1	0	-2
11	Mason Faulkner	G	19:23	1-5	0-1	1-2	0	0	0	3	3	3	1	2	1	0	1	-12
21	Marcus Thomas		00:00															
25	Ahmir Langlais		05:48	0-1	0-0	0-2	0	3	3	0	2	0	0	0	0	0	0	-3
14	Kameron Gibson		13:15	1-3	0-2	0-0	0	0	0	2	0	2	2	1	0	0	0	-12
1	Travion McCray		01:15	0-0	0-0	0-0	0	1	1	1	0	0	0	0	0	0	0	0
Team							0	0	0			0		0				
Totals				7-27	2-13	4-10	5	11	16	12	10	20	5	5	1	1	1	-12

Shooting By Period		
2 nd FG%	7-27	25.9%
3PT%	2-13	15.4%
FT%	4-10	40%
GM FG%	7-27	25.9%
3PT%	2-13	15.4%
FT%	4-10	40.0%

Dead Ball Rebounds: 2, 0

Technical Fouls::NONE

	ETSU	WCU
Biggest lead	11 (2 nd 0:26)	5 (2 nd 16:35)
Best Scoring Run	8(2 nd 9:22)	3(2 nd 18:56)
Lead Changes	1	
Times Tied	1	
Time with Lead	10:35	08:45

Points from	ETSU	WCU
Turnovers	5	8
Paint	20	10
Second Chance	8	2
Fast Breaks	3	0
Bench	11	2

	Period by Period Scoring		
	1st	2nd	TOT
ETSU	27	32	59
WCU	28	20	48



ETSU at Western Caro.

01/20/21 Ramsey Center, Cullowhee
2020-21 Men's Basketball

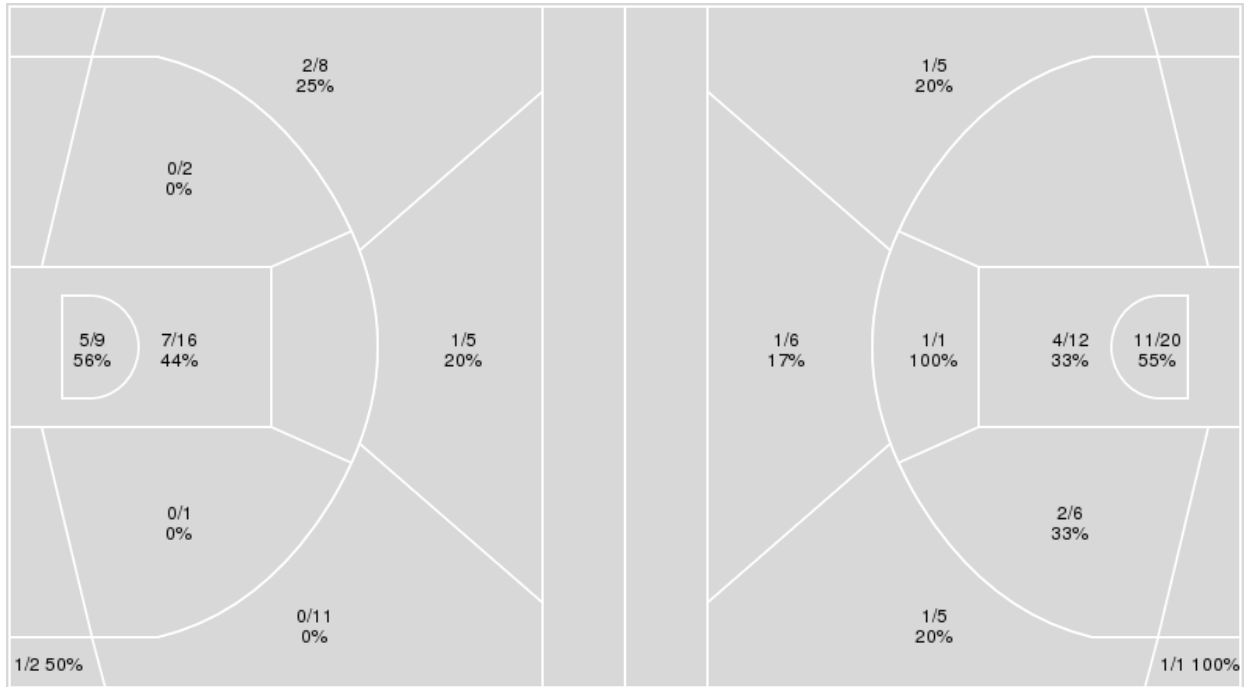
Officials: Todd Austin, Zelton Steele, Mat Jarman

{ Players => 0, 1, 2, 3, 4, 5, 10, 11, 12, 13, 14, 20, 21, 22, 24, 25; } FG
Types => All; Results => All;

{ Players => 0, 1, 2, 3, 4, 5, 11, 12, 14, 15, 21, 22, 23, 24, 25, 33; } FG
Types => All; Results => All;

Western Caro.

ETSU



Western Caro.	M/A	%
Field Goals	16/54	30
2 Points	12/28	43
3 Points	4/26	15
Free Throws	12/19	63

ETSU	M/A	%
Field Goals	22/56	39
2 Points	18/39	46
3 Points	4/17	24
Free Throws	11/16	69



ETSU at Western Caro.

01/20/21 Ramsey Center, Cullowhee
2020-21 Men's Basketball

Officials: Todd Austin, Zelton Steele, Mat Jarman

ETSU

No	Name	Mins		Score		Points Diff		Points per Min		Assists		Rebounds		Steals		Turnovers	
		On	Off	On	Off	On	Off	On	Off	On	Off	On	Off	On	Off	On	Off
0	Silas Adheke	24:24	15:36	33 - 27	26 - 21	6	5	1.35	1.67	3	6	24	17	6	2	8	5
1	Serrel Smith Jr.	22:16	17:44	27 - 24	32 - 24	3	8	1.21	1.80	2	7	18	23	6	2	9	4
3	Truth Harris	01:42	38:18	1 - 4	58 - 44	-3	14	0.59	1.51	0	9	1	40	0	8	0	13
4	David Sloan	29:45	10:15	53 - 39	6 - 9	14	-3	1.78	0.59	9	0	34	7	6	2	9	4
12	Damari Monsanto	36:15	03:45	56 - 37	3 - 11	19	-8	1.54	0.80	9	0	38	3	7	1	11	2
14	Ty Brewer	23:30	16:30	39 - 32	20 - 16	7	4	1.66	1.21	7	2	27	14	6	2	6	7
15	Richard Amaefule	01:38	38:22	2 - 2	57 - 46	0	11	1.22	1.49	0	9	1	40	0	8	1	12
23	Vonnie Patterson	28:29	11:31	44 - 36	15 - 12	8	3	1.54	1.30	8	1	27	14	4	4	10	3
25	Ledarius Brewer	23:48	16:12	34 - 28	25 - 20	6	5	1.43	1.54	6	3	27	14	4	4	8	5
33	Charlie Weber	08:13	31:47	6 - 11	53 - 37	-5	16	0.73	1.67	1	8	8	33	1	7	3	10

Western Caro.

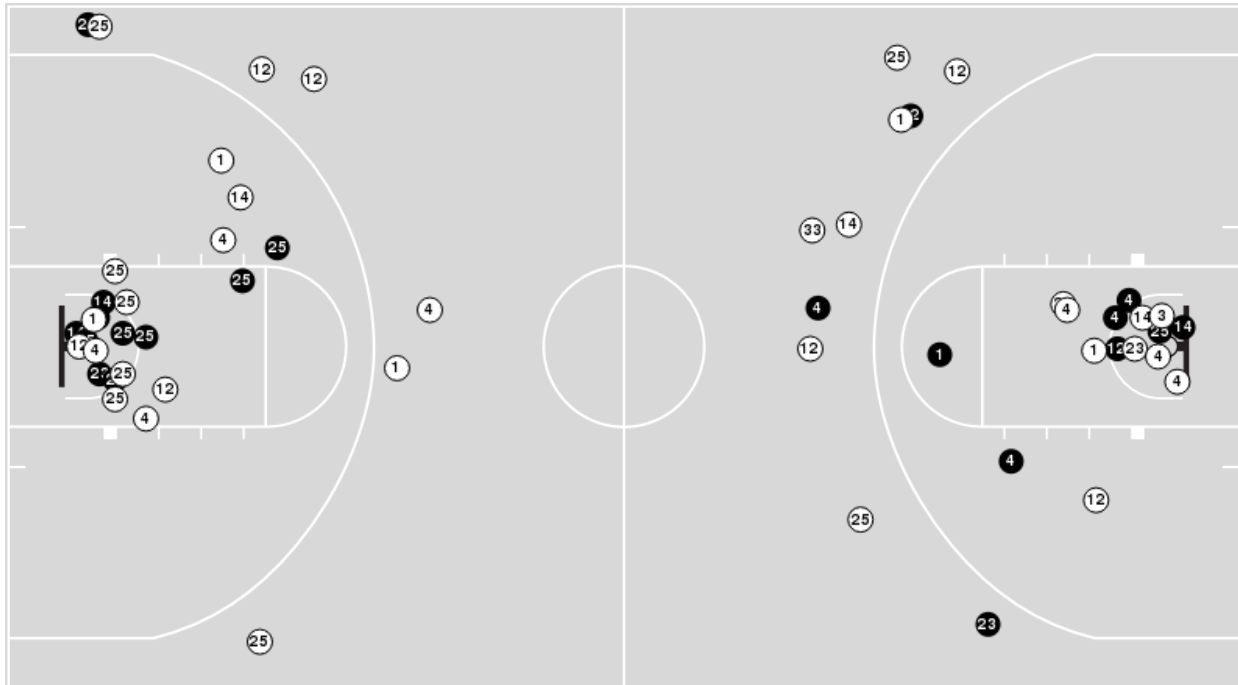
No	Name	Mins		Score		Points Diff		Points per Min		Assists		Rebounds		Steals		Turnovers	
		On	Off	On	Off	On	Off	On	Off	On	Off	On	Off	On	Off	On	Off
1	Travion McCray	05:46	34:14	2 - 8	46 - 51	-6	-5	0.35	1.34	0	10	6	30	0	3	4	11
2	Matt Halvorsen	38:54	01:06	46 - 59	2 - 0	-13	2	1.18	1.82	10	0	34	2	3	0	15	0
4	Tyler Harris	27:08	12:52	33 - 36	15 - 23	-3	-8	1.22	1.17	6	4	26	10	2	1	11	4
11	Mason Faulkner	37:00	03:00	48 - 52	0 - 7	-4	-7	1.30	0.00	10	0	32	4	3	0	11	4
12	Cory Hightower	25:07	14:53	32 - 38	16 - 21	-6	-5	1.27	1.08	6	4	21	15	2	1	11	4
13	Xavier Cork	27:03	12:57	38 - 44	10 - 15	-6	-5	1.40	0.77	9	1	23	13	2	1	12	3
14	Kameron Gibson	22:24	17:36	24 - 35	24 - 24	-11	0	1.07	1.36	6	4	24	12	2	1	6	9
21	Marcus Thomas	03:41	36:19	7 - 8	41 - 51	-1	-10	1.90	1.13	2	8	1	35	0	3	2	13
25	Ahmir Langlais	12:57	27:03	10 - 15	38 - 44	-5	-6	0.77	1.40	1	9	13	23	1	2	3	12



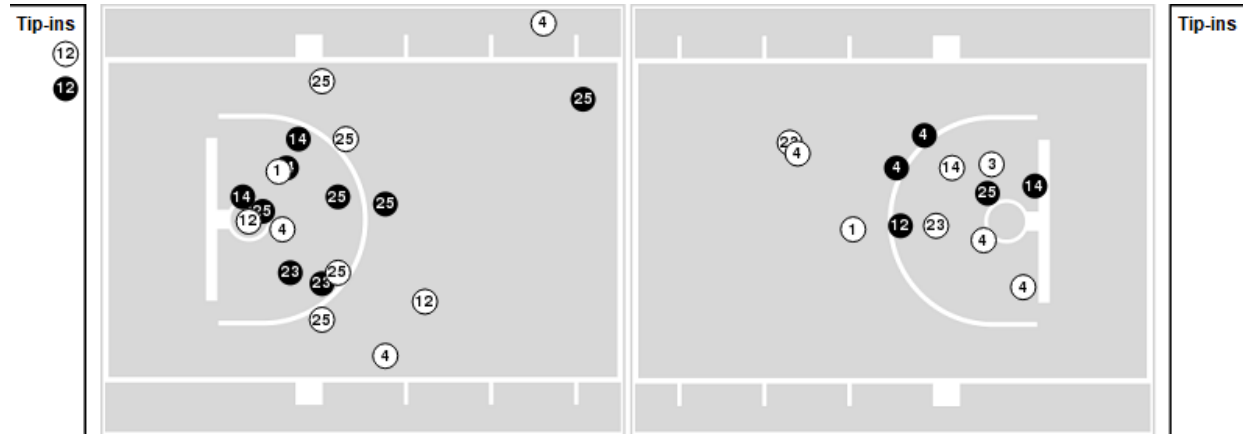
Players => 0, 1, 2, 3, 4, 5, 11, 12, 14, 15, 21, 22, 23, 24, 25, 33FG Types=>AllResults=>All

ETSU

All Field Goals



Blow Up Chart



● Made ○ Missed N - Player Number

ETSU	M/A	%
Field Goals	22/56	39
2 Points	18/39	46
3 Points	4/17	24
Free Throws	11/16	69

ETSU	M/A	%
Points in the Paint	30 (15 / 32)	47
Fast Break Points	9 (6/7)	86
Second Chance Points	8 (5/10)	50
Effective FG%	43	



ETSU at Western Caro.

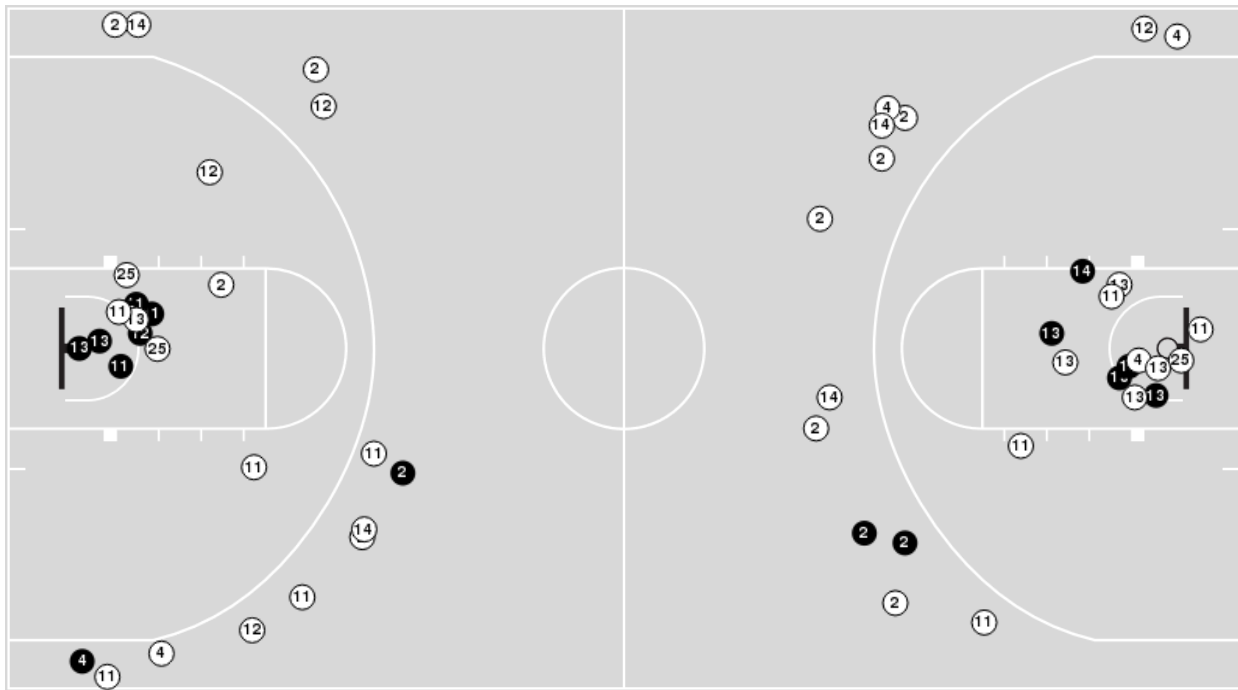
01/20/21 Ramsey Center, Cullowhee
2020-21 Men's Basketball

Officials: Todd Austin, Zelton Steele, Mat Jarman

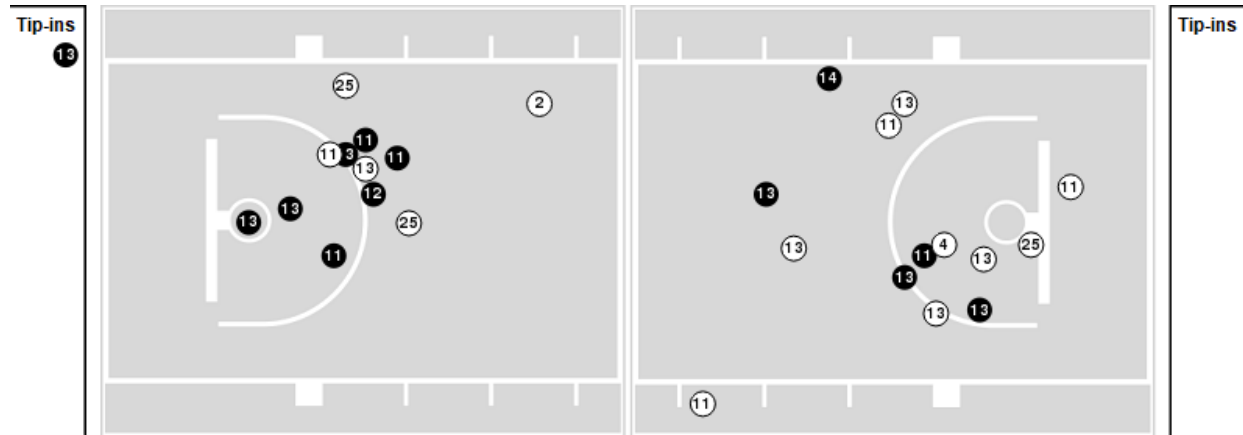
Players => 0, 1, 2, 3, 4, 5, 10, 11, 12, 13, 14, 20, 21, 22, 24, 25 FG Types=>AllResults=>All

Western Caro.

All Field Goals



Blow Up Chart



● Made ○ Missed N - Player Number

Western Caro.	M/A	%
Field Goals	16/54	30
2 Points	12/28	43
3 Points	4/26	15
Free Throws	12/19	63

Western Caro.	M/A	%
Points in the Paint	24 (12 / 25)	48
Fast Break Points	5 (5/5)	100
Second Chance Points	8 (5/10)	50
Effective FG%	33	



ETSU at Western Caro.

01/20/21 Ramsey Center, Cullowhee
2020-21 Men's Basketball

Officials: Todd Austin, Zelton Steele, Mat Jarman

ETSU

Lineup	Quarter On	Time On	Quarter Off	Time Off	Time on Court	Score	Score Diff	Reb	Stl	Tov	Ass	PPP
0- Adheke S/ 1- Smith Jr. S/ 12- Monsanto D/ 23- Patterson V/ 25- Brewer L/	1	20:00	1	15:10	04:50	2-6	-4	2	1	2	0	0.2500
0- Adheke S/ 1- Smith Jr. S/ 4- Sloan D/ 14- Brewer T/ 25- Brewer L/	1	15:10	1	14:43	00:27	0-2	-2	0	0	0	0	0.0000
0- Adheke S/ 1- Smith Jr. S/ 4- Sloan D/ 12- Monsanto D/ 14- Brewer T/	1	14:43	1	12:08	02:35	4-4	0	1	3	1	0	0.6667
1- Smith Jr. S/ 4- Sloan D/ 12- Monsanto D/ 14- Brewer T/ 33- Weber C/	1	12:08	1	10:26	01:42	1-2	-1	2	0	0	0	0.4098
3- Harris T/ 4- Sloan D/ 14- Brewer T/ 23- Patterson V/ 33- Weber C/	1	10:26	1	08:44	01:42	1-4	-3	1	0	0	0	0.4098
0- Adheke S/ 4- Sloan D/ 12- Monsanto D/ 14- Brewer T/ 23- Patterson V/	1	08:44	1	07:17	01:27	3-3	0	1	0	1	1	1.0000
0- Adheke S/ 1- Smith Jr. S/ 4- Sloan D/ 12- Monsanto D/ 23- Patterson V/	1	07:17	1	01:36	05:41	14-2	12	6	0	2	2	1.5766
0- Adheke S/ 1- Smith Jr. S/ 4- Sloan D/ 14- Brewer T/ 23- Patterson V/	1	01:36	1	00:12	01:24	2-3	-1	2	1	1	0	0.6667
1- Smith Jr. S/ 4- Sloan D/ 14- Brewer T/ 25- Brewer L/ 33- Weber C/	1	00:12	1	00:00	00:11	0-2	-2	0	0	1	0	0.0000
1- Smith Jr. S/ 4- Sloan D/ 14- Brewer T/ 23- Patterson V/ 33- Weber C/	1	00:00	2	20:00	00:01	0-0	0	0	0	0	0	0.0000
0- Adheke S/ 1- Smith Jr. S/ 12- Monsanto D/ 23- Patterson V/ 25- Brewer L/	2	20:00	2	17:37	02:23	2-3	-1	2	0	1	0	0.5000
1- Smith Jr. S/ 12- Monsanto D/ 23- Patterson V/ 25- Brewer L/ 33- Weber C/	2	17:37	2	17:03	00:34	0-0	0	1	0	1	0	0.0000
4- Sloan D/ 12- Monsanto D/ 23- Patterson V/ 25- Brewer L/ 33- Weber C/	2	17:03	2	16:06	00:57	0-3	-3	0	0	1	0	0.0000
0- Adheke S/ 4- Sloan D/ 12- Monsanto D/ 23- Patterson V/ 25- Brewer L/	2	16:06	2	14:01	02:05	2-2	0	3	1	0	0	1.0000
0- Adheke S/ 4- Sloan D/ 12- Monsanto D/ 14- Brewer T/ 25- Brewer L/	2	14:01	2	12:09	01:52	4-0	4	6	0	0	0	1.3333
4- Sloan D/ 12- Monsanto D/ 14- Brewer T/ 25- Brewer L/ 33- Weber C/	2	12:09	2	12:01	00:08	0-0	0	0	0	0	0	0.0000
1- Smith Jr. S/ 12- Monsanto D/ 14- Brewer T/ 25- Brewer L/ 33- Weber C/	2	12:01	2	09:33	02:28	2-0	2	2	1	0	0	0.5000
4- Sloan D/ 12- Monsanto D/ 14- Brewer T/ 25- Brewer L/ 33- Weber C/	2	09:33	2	09:03	00:30	2-0	2	2	0	0	1	2.0000
4- Sloan D/ 12- Monsanto D/ 14- Brewer T/ 15- Amaefule R/ 25- Brewer L/	2	09:03	2	07:25	01:38	2-2	0	1	0	1	0	0.4630
0- Adheke S/ 4- Sloan D/ 12- Monsanto D/ 14- Brewer T/ 23- Patterson V/	2	07:25	2	05:45	01:40	0-2	-2	1	0	0	0	0.0000
4- Sloan D/ 12- Monsanto D/ 14- Brewer T/ 23- Patterson V/ 25- Brewer L/	2	05:45	2	00:00	05:45	18-8	10	8	1	1	5	1.8672



ETSU at Western Caro.

01/20/21 Ramsey Center, Cullowhee
2020-21 Men's Basketball

Officials: Todd Austin, Zelton Steele, Mat Jarman

Western Caro.

Lineup	Quarter On	Time On	Quarter Off	Time Off	Time on Court	Score	Score Diff	Reb	Stl	Tov	Ass	PPP
2- Halvorsen M/ 4- Harris T/ 11- Faulkner M/ 12- Hightower C/ 13- Cork X/	1	20:00	1	16:50	03:10	6-2	4	2	1	3	1	0.9494
2- Halvorsen M/ 4- Harris T/ 11- Faulkner M/ 14- Gibson K/ 25- Langlais A/	1	16:50	1	15:10	01:40	0-0	0	5	0	1	0	0.0000
2- Halvorsen M/ 11- Faulkner M/ 12- Hightower C/ 14- Gibson K/ 25- Langlais A/	1	15:10	1	14:50	00:20	2-0	2	0	0	0	0	2.2727
2- Halvorsen M/ 11- Faulkner M/ 12- Hightower C/ 13- Cork X/ 14- Gibson K/	1	14:50	1	13:39	01:11	2-0	2	3	0	1	0	0.6667
4- Harris T/ 11- Faulkner M/ 12- Hightower C/ 13- Cork X/ 14- Gibson K/	1	13:39	1	13:21	00:18	2-0	2	1	0	0	0	2.0000
1- McCray T/ 2- Halvorsen M/ 4- Harris T/ 12- Hightower C/ 13- Cork X/	1	13:21	1	12:08	01:13	0-4	-4	1	0	2	0	0.0000
1- McCray T/ 2- Halvorsen M/ 4- Harris T/ 11- Faulkner M/ 25- Langlais A/	1	12:08	1	10:26	01:42	2-1	1	2	0	0	0	0.6667
2- Halvorsen M/ 11- Faulkner M/ 12- Hightower C/ 13- Cork X/ 14- Gibson K/	1	10:26	1	08:44	01:42	4-1	3	3	0	0	2	1.3333
4- Harris T/ 11- Faulkner M/ 12- Hightower C/ 14- Gibson K/ 25- Langlais A/	1	08:44	1	07:56	00:48	0-0	0	1	0	0	0	0.0000
2- Halvorsen M/ 4- Harris T/ 11- Faulkner M/ 12- Hightower C/ 25- Langlais A/	1	07:56	1	07:17	00:39	3-3	0	0	0	0	0	3.0000
2- Halvorsen M/ 4- Harris T/ 11- Faulkner M/ 14- Gibson K/ 25- Langlais A/	1	07:17	1	05:17	02:00	0-5	-5	0	1	0	0	0.0000
1- McCray T/ 2- Halvorsen M/ 12- Hightower C/ 13- Cork X/ 14- Gibson K/	1	05:17	1	04:07	01:10	0-3	-3	1	0	1	0	0.0000
1- McCray T/ 2- Halvorsen M/ 11- Faulkner M/ 12- Hightower C/ 13- Cork X/	1	04:07	1	03:41	00:26	0-0	0	0	0	0	0	0.0000
2- Halvorsen M/ 11- Faulkner M/ 12- Hightower C/ 13- Cork X/ 21- Thomas M/	1	03:41	1	02:06	01:35	2-4	-2	0	0	1	1	0.6667
2- Halvorsen M/ 4- Harris T/ 11- Faulkner M/ 13- Cork X/ 21- Thomas M/	1	02:06	2	20:00	02:06	5-4	1	1	0	1	1	1.0504
2- Halvorsen M/ 4- Harris T/ 11- Faulkner M/ 12- Hightower C/ 13- Cork X/	2	20:00	2	17:37	02:23	3-2	1	2	0	2	0	0.6757
2- Halvorsen M/ 4- Harris T/ 11- Faulkner M/ 12- Hightower C/ 25- Langlais A/	2	17:37	2	16:06	01:31	3-0	3	1	0	0	1	1.5000
2- Halvorsen M/ 4- Harris T/ 11- Faulkner M/ 14- Gibson K/ 25- Langlais A/	2	16:06	2	14:55	01:11	0-2	-2	0	0	1	0	0.0000
2- Halvorsen M/ 4- Harris T/ 11- Faulkner M/ 13- Cork X/ 14- Gibson K/	2	14:55	2	14:01	00:54	2-0	2	1	0	0	1	2.0000
2- Halvorsen M/ 11- Faulkner M/ 12- Hightower C/ 13- Cork X/ 14- Gibson K/	2	14:01	2	12:09	01:52	0-4	-4	1	0	0	0	0.0000
1- McCray T/ 2- Halvorsen M/ 4- Harris T/ 14- Gibson K/ 25- Langlais A/	2	12:09	2	11:32	00:37	0-0	0	2	0	1	0	0.0000
1- McCray T/ 2- Halvorsen M/ 4- Harris T/ 11- Faulkner M/ 25- Langlais A/	2	11:32	2	10:54	00:38	0-0	0	0	0	0	0	0.0000
2- Halvorsen M/ 4- Harris T/ 11- Faulkner M/ 12- Hightower C/ 25- Langlais A/	2	10:54	2	09:03	01:51	0-4	-4	2	0	0	0	0.0000
2- Halvorsen M/ 4- Harris T/ 11- Faulkner M/ 12- Hightower C/ 13- Cork X/	2	09:03	2	08:41	00:22	0-0	0	1	0	0	0	0.0000
2- Halvorsen M/ 11- Faulkner M/ 12- Hightower C/ 13- Cork X/ 14- Gibson K/	2	08:41	2	06:53	01:48	4-2	2	0	0	0	1	1.3889
2- Halvorsen M/ 4- Harris T/ 11- Faulkner M/ 13- Cork X/ 14- Gibson K/	2	06:53	2	02:48	04:05	7-9	-2	4	0	0	2	1.1905
2- Halvorsen M/ 11- Faulkner M/ 12- Hightower C/ 13- Cork X/ 14- Gibson K/	2	02:48	2	00:00	02:48	1-9	-8	2	1	1	0	0.1880



ETSU at Western Caro.

01/20/21 Ramsey Center, Cullowhee
2020-21 Men's Basketball

Officials: Todd Austin, Zelton Steele, Mat Jarman

ETSU

Lineup	Time	Score	Score Diff	Pts/Min	Reb	Stl	Tov	Ast	PPP
0- Adheke S/ 1- Smith Jr. S/ 12- Monsanto D/ 23- Patterson V/ 25- Brewer L/	07:13	4-9	-5	0.5543	4	1	3	0	0.3333
4- Sloan D/ 12- Monsanto D/ 14- Brewer T/ 23- Patterson V/ 25- Brewer L/	05:45	18-8	10	3.1304	8	1	1	5	1.8672
0- Adheke S/ 1- Smith Jr. S/ 4- Sloan D/ 12- Monsanto D/ 23- Patterson V/	05:41	14-2	12	2.4633	6	0	2	2	1.5766
0- Adheke S/ 4- Sloan D/ 12- Monsanto D/ 14- Brewer T/ 23- Patterson V/	03:07	3-5	-2	0.9626	2	0	1	1	0.6757
0- Adheke S/ 1- Smith Jr. S/ 4- Sloan D/ 12- Monsanto D/ 14- Brewer T/	02:35	4-4	0	1.5484	1	3	1	0	0.6667
1- Smith Jr. S/ 12- Monsanto D/ 14- Brewer T/ 25- Brewer L/ 33- Weber C/	02:28	2-0	2	0.8108	2	1	0	0	0.5000
0- Adheke S/ 4- Sloan D/ 12- Monsanto D/ 23- Patterson V/ 25- Brewer L/	02:05	2-2	0	0.9600	3	1	0	0	1.0000
0- Adheke S/ 4- Sloan D/ 12- Monsanto D/ 14- Brewer T/ 25- Brewer L/	01:52	4-0	4	2.1429	6	0	0	0	1.3333
1- Smith Jr. S/ 4- Sloan D/ 12- Monsanto D/ 14- Brewer T/ 33- Weber C/	01:42	1-2	-1	0.5882	2	0	0	0	0.4098
3- Harris T/ 4- Sloan D/ 14- Brewer T/ 23- Patterson V/ 33- Weber C/	01:42	1-4	-3	0.5882	1	0	0	0	0.4098
4- Sloan D/ 12- Monsanto D/ 14- Brewer T/ 15- Amaefule R/ 25- Brewer L/	01:38	2-2	0	1.2245	1	0	1	0	0.4630
0- Adheke S/ 1- Smith Jr. S/ 4- Sloan D/ 14- Brewer T/ 23- Patterson V/	01:24	2-3	-1	1.4286	2	1	1	0	0.6667
4- Sloan D/ 12- Monsanto D/ 23- Patterson V/ 25- Brewer L/ 33- Weber C/	00:57	0-3	-3	0.0000	0	0	1	0	0.0000
4- Sloan D/ 12- Monsanto D/ 14- Brewer T/ 25- Brewer L/ 33- Weber C/	00:38	2-0	2	3.1579	2	0	0	1	2.0000
1- Smith Jr. S/ 12- Monsanto D/ 23- Patterson V/ 25- Brewer L/ 33- Weber C/	00:34	0-0	0	0.0000	1	0	1	0	0.0000
0- Adheke S/ 1- Smith Jr. S/ 4- Sloan D/ 14- Brewer T/ 25- Brewer L/	00:27	0-2	-2	0.0000	0	0	0	0	0.0000
1- Smith Jr. S/ 4- Sloan D/ 14- Brewer T/ 25- Brewer L/ 33- Weber C/	00:11	0-2	-2	0.0000	0	0	1	0	0.0000
1- Smith Jr. S/ 4- Sloan D/ 14- Brewer T/ 23- Patterson V/ 33- Weber C/	00:01	0-0	0	0.0000	0	0	0	0	0.0000



ETSU at Western Caro.

01/20/21 Ramsey Center, Cullowhee
2020-21 Men's Basketball

Officials: Todd Austin, Zelton Steele, Mat Jarman

Western Caro.

Lineup	Time	Score	Score Diff	Pts/Min	Reb	Stl	Tov	Ast	PPP
2- Halvorsen M/ 11- Faulkner M/ 12- Hightower C/ 13- Cork X/ 14- Gibson K/	09:21	11-16	-5	1.1765	9	1	2	3	0.6395
2- Halvorsen M/ 4- Harris T/ 11- Faulkner M/ 12- Hightower C/ 13- Cork X/	05:55	9-4	5	1.5211	5	1	5	1	0.8364
2- Halvorsen M/ 4- Harris T/ 11- Faulkner M/ 13- Cork X/ 14- Gibson K/	04:59	9-9	0	1.8060	5	0	0	3	1.3081
2- Halvorsen M/ 4- Harris T/ 11- Faulkner M/ 14- Gibson K/ 25- Langlais A/	04:51	0-7	-7	0.0000	5	1	2	0	0.0000
2- Halvorsen M/ 4- Harris T/ 11- Faulkner M/ 12- Hightower C/ 25- Langlais A/	04:01	6-7	-1	1.4938	3	0	0	1	1.0204
1- McCray T/ 2- Halvorsen M/ 4- Harris T/ 11- Faulkner M/ 25- Langlais A/	02:20	2-1	1	0.8571	2	0	0	0	0.5000
2- Halvorsen M/ 4- Harris T/ 11- Faulkner M/ 13- Cork X/ 21- Thomas M/	02:06	5-4	1	2.3810	1	0	1	1	1.0504
2- Halvorsen M/ 11- Faulkner M/ 12- Hightower C/ 13- Cork X/ 21- Thomas M/	01:35	2-4	-2	1.2632	0	0	1	1	0.6667
1- McCray T/ 2- Halvorsen M/ 4- Harris T/ 12- Hightower C/ 13- Cork X/	01:13	0-4	-4	0.0000	1	0	2	0	0.0000
1- McCray T/ 2- Halvorsen M/ 12- Hightower C/ 13- Cork X/ 14- Gibson K/	01:10	0-3	-3	0.0000	1	0	1	0	0.0000
4- Harris T/ 11- Faulkner M/ 12- Hightower C/ 14- Gibson K/ 25- Langlais A/	00:48	0-0	0	0.0000	1	0	0	0	0.0000
1- McCray T/ 2- Halvorsen M/ 4- Harris T/ 14- Gibson K/ 25- Langlais A/	00:37	0-0	0	0.0000	2	0	1	0	0.0000
1- McCray T/ 2- Halvorsen M/ 11- Faulkner M/ 12- Hightower C/ 13- Cork X/	00:26	0-0	0	0.0000	0	0	0	0	0.0000
2- Halvorsen M/ 11- Faulkner M/ 12- Hightower C/ 14- Gibson K/ 25- Langlais A/	00:20	2-0	2	6.0000	0	0	0	0	2.2727
4- Harris T/ 11- Faulkner M/ 12- Hightower C/ 13- Cork X/ 14- Gibson K/	00:18	2-0	2	6.6667	1	0	0	0	2.0000