



**Soccer Box Score (End of 2nd Half)**  
**2020-21 Women's Soccer**  
**Lipscomb vs ETSU (2/21/2021 at Johnson City, UNITED STATES)**

Lipscomb (0-1-0) vs.  
 ETSU (0-1-0)  
 Date: 2/21/2021 • Attendance: 234

Goals by period	1	2	Total
Bisons	1	1	2
Buccaneers (Bucs)	0	1	1

**Lipscomb**

Pos	##	Player	Sh	SO	G	A	Fo	Min
gk	1	CJ Graham	-	-	-	-	-	90
def	2	Shelby Craft	1	1	-	-	-	90
mid	3	Cami Rogers	4	1	-	-	-	69
mid	5	Kelli Beiler	4	3	1	-	2	88
def	8	Logan McFadden	-	-	-	-	1	90
fwd	9	Emanuela Schurch	2	-	-	-	-	53
fwd	10	Grace Oliver	2	-	-	-	1	62
mid	14	Evee Reeder	-	-	-	1	-	46
def	23	Audrey Ann Beck	-	-	-	-	-	90
mid	25	Kaitlin Echols	1	-	-	1	-	90
fwd	26	Molly Grant	6	3	1	1	1	69
-- Substitutes --								
	4	Tori Wheeler	3	2	-	-	1	31
	11	Kristi Jones	1	1	-	-	1	24
	15	Haley Williams	-	-	-	-	-	21
	16	Kammy McGee	1	-	-	-	-	44
	17	Skye Baun	-	-	-	-	-	27
	27	Emma Chiles	-	-	-	-	-	6
Totals			25	11	2	3	7	

**ETSU**

Pos	##	Player	Sh	SO	G	A	Fo	Min
mid	2	Sinoxolo Cesane	-	-	-	-	2	87
fwd	4	Merrin Gilmer	-	-	-	-	1	90
def	5	Taylor Limprevil	1	1	1	-	-	90
fwd	9	Sarah Connolly	-	-	-	-	-	78
fwd	13	Mægan Sours	1	1	-	-	-	73
mid	15	Momoko Horiuchi	-	-	-	-	-	45
def	17	Raffaella Giuliano	-	-	-	-	-	90
mid	18	Kendall King	-	-	-	-	-	90
mid	19	Andjela Kricak	-	-	-	-	-	78
mid	21	Katie Philips	-	-	-	-	1	90
gk	31	Ashton Blair	-	-	-	-	-	90
-- Substitutes --								
	6	Paige Carlsen	-	-	-	-	-	18
	7	Sarah Hill	-	-	-	-	-	9
	8	Emma Arnold	-	-	-	-	-	29
	22	Jocelyn Nehls	-	-	-	-	-	12
	23	Kyra Ranvek	-	-	-	-	-	22
Totals			2	2	1	-	4	

##	Goalkeepers	Dec	Min	GA	Saves
1	CJ Graham		90:00	1	1

##	Goalkeepers	Dec	Min	GA	Saves
31	Ashton Blair		90:00	2	9

Shots by period	1	2	Total
Bisons	10	15	25
Buccaneers (Bucs)	0	2	2

Saves by period	1	2	Total
Bisons	0	1	1
Buccaneers (Bucs)	5	4	9

Corner kicks	1	2	Total
Bisons	4	1	5
Buccaneers (Bucs)	0	0	0

Fouls	1	2	Total
Bisons	5	2	7
Buccaneers (Bucs)	2	2	4

**Scoring summary:**

No.	Time	Team	Goal scorer	Assist	Description
1.	20:20	LIP	Molly Grant (1)	Kaitlin Echols	
2.	57:08	LIP	Kelli Beiler (1)	Molly Grant Evee Reeder	
3.	67:17	ETS	Taylor Limprevil (1)	(unassisted)	

**Cautions and ejections:**

YC - Bisons #26 88:13

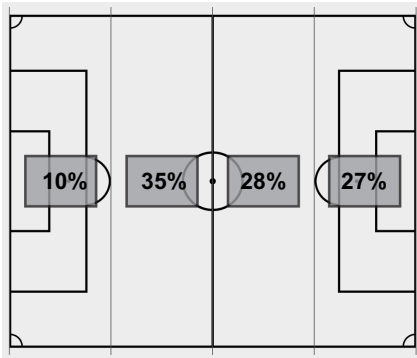
Stadium: Summers-Taylor Stadium

Officials:

Offsides: Lipscomb 9, ETSU 1.

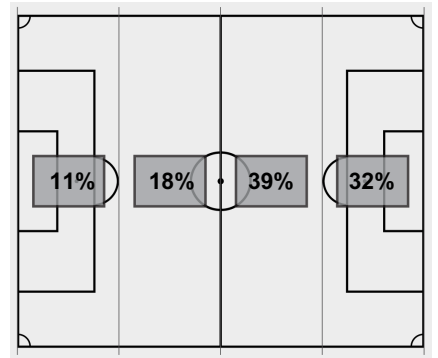


**Soccer Box Score (End of 2nd Half)**  
**2020-21 Women's Soccer**  
**Lipscomb vs ETSU (2/21/2021 at Johnson City, UNITED STATES)**



Attacking Direction →

25	TOTAL SHOTS	2
11	SHOTS ON TARGET	2
1	SAVES	9
5	CORNERS	0
9	OFFSIDES	1
1	YELLOW CARDS	0
0	RED CARDS	0
52%	POSSESSION TOTAL	48%



← Attacking Direction

\_\_\_\_\_  
Official's signature