



ETSU at Vanderbilt

12/08/20 Memorial Gymnasium, Nashville  
2020-21 Women's Basketball

Officials: Dee Kantner, Cameron Inouye, Laura Morris

ETSU - 61

Record: 1-2

NO.	Name	Min	FG	3P	FT	Rebounds			Fouls		TP	AS	TO	ST	Blocks		+/-
			M-A	M-A	M-A	OR	DR	TOT	PF	FD					BS	BA	
34	Mykia Dowdell	F 21:18	3-5	2-2	1-2	1	6	7	2	3	9	2	5	1	0	2	-22
44	E'Lease Stafford	F 21:32	1-8	0-3	5-6	1	4	5	2	3	7	0	3	0	0	0	-21
24	Jakhya Davis	C 29:26	3-12	0-2	1-6	4	4	8	1	5	7	1	2	0	1	1	-29
10	Courtney Moore	G 18:38	1-4	1-3	5-6	3	2	5	3	4	8	1	1	1	0	0	-11
14	Kaia Upton	G 23:56	1-4	0-1	0-0	1	4	5	2	1	2	2	2	1	0	1	-18
2	Imani Williams	07:07	0-1	0-0	2-2	1	1	2	2	2	2	0	0	0	0	1	9
23	Jasmine Sanders	14:50	0-6	0-3	1-2	0	1	1	2	2	1	1	1	0	0	0	-13
13	Shynia Jackson	19:03	4-7	1-3	0-2	0	1	1	2	2	9	1	4	1	0	1	-2
21	Amaya Adams	18:24	3-4	0-0	0-0	1	1	2	0	2	6	0	2	0	0	1	-10
1	Carly Hooks	07:40	2-5	0-1	0-0	1	2	3	0	0	4	1	3	0	0	0	-4
5	Abby Carrington	04:30	1-1	0-0	2-2	0	0	0	0	1	4	0	0	1	0	0	2
20	Kelly Post	09:13	0-1	0-1	0-0	0	3	3	0	0	0	0	0	0	0	0	9
3	Ashawntae Brown	04:23	1-1	0-0	0-0	1	0	1	2	0	2	1	1	0	0	0	10
Team						4	3	7			0		0				
<b>Totals</b>			20-59	4-19	17-28	18	32	50	18	25	61	10	24	5	1	7	-20

Shooting By Period		
1st FG%	7-18	38.9%
3PT%	1-4	25.0%
FT%	2-2	100%
2nd FG%	5-12	41.7%
3PT%	1-3	33.3%
FT%	3-4	75%
3rd FG%	1-14	7.1%
3PT%	1-6	16.7%
FT%	4-10	40%
4th FG%	7-15	46.7%
3PT%	1-6	16.7%
FT%	8-12	66.7%
GM FG%	20-59	33.9%
3PT%	4-19	21.1%
FT%	17-28	60.7%

Dead Ball Rebounds: 8, 0

Technical Fouls::NONE

Vanderbilt - 81

Record: 1-1

NO.	Name	Min	FG	3P	FT	Rebounds			Fouls		TP	AS	TO	ST	Blocks		+/-
			M-A	M-A	M-A	OR	DR	TOT	PF	FD					BS	BA	
5	Yaubryon Chambers	F 25:58	1-2	0-0	0-0	4	5	9	3	0	2	0	2	1	3	0	14
15	Brinae Alexander	F 33:33	3-14	2-9	3-4	3	2	5	4	3	11	2	4	1	1	1	23
23	Koi Love	F 34:12	7-14	0-2	5-8	3	9	12	3	4	19	1	2	4	3	0	32
1	Enna Pehadzic	G 35:23	9-23	6-15	1-2	1	2	3	2	2	25	5	2	0	0	0	21
2	Chelsie Hall	G 30:38	6-11	1-1	3-4	2	0	2	3	5	16	4	1	2	0	0	22
0	Bella LaChance	11:00	0-0	0-0	1-2	1	1	2	3	2	1	1	0	0	0	0	-3
44	Emily Bowman	08:48	0-1	0-0	1-4	3	0	3	4	2	1	0	1	1	0	0	-4
22	Brylee Bartram	20:28	2-10	2-10	0-0	1	0	1	3	0	6	1	2	2	0	0	-5
Team						3	5	8			0		0				
<b>Totals</b>			28-75	11-37	14-24	21	24	45	25	18	81	14	14	11	7	1	20

Shooting By Period		
1st FG%	4-15	26.7%
3PT%	1-6	16.7%
FT%	4-4	100%
2nd FG%	8-22	36.4%
3PT%	4-12	33.3%
FT%	5-8	62.5%
3rd FG%	11-20	55.0%
3PT%	3-6	50.0%
FT%	3-5	60%
4th FG%	5-18	27.8%
3PT%	3-13	23.1%
FT%	2-7	28.6%
GM FG%	28-75	37.3%
3PT%	11-37	29.7%
FT%	14-24	58.3%

Dead Ball Rebounds: 4, 0

Technical Fouls::NONE

	ETSU	Vandy
Biggest lead	4 (1 <sup>st</sup> 0:00)	32 (4 <sup>th</sup> 5:41)
Best Scoring Run	10 (1 <sup>st</sup> 0:00)	8 (3 <sup>rd</sup> 7:28)
Lead Changes	6	
Times Tied	3	
Time with Lead	02:17	36:48

	ETSU	Vandy
Points from	ETSU	Vandy
Turnovers	10	18
Paint	28	32
Second Chance	15	11
Fast Breaks	9	21
Bench	28	8

	Period by Period Scoring				
	1st	2nd	3rd	4th	TOT
ETSU	17	14	7	23	61
Vandy	13	25	28	15	81



## Period 1

## Quarter Starters:

<b>Vandy</b>	1 Pehadzic E	2 Hall C	5 Chambers Y	15 Alexander B	23 Love K
<b>ETSU</b>	10 Moore C	14 Upton K	24 Davis J	34 Dowdell M	44 Stafford E

Game Time	Vandy	Score	Diff	ETSU
10:00	5 CHAMBERS Y jumpball won			24 DAVIS J jumpball lost
09:53	1 PEHADZIC E 3pt FG , jump shot missed			
09:51	offensive rebound (1)			
09:42	23 LOVE K 2pt FG second chance in the paint, layup made (2)	<b>2-0</b>	<b>2</b>	
09:27				44 STAFFORD E 2pt FG in the paint, layup missed
09:23	5 CHAMBERS Y defensive rebound (1)			
09:19	15 ALEXANDER B 2pt FG outside the paint, jump shot missed			
09:14				14 UPTON K defensive rebound (1)
08:59				34 DOWDELL M turnover travel (1)
08:41	23 LOVE K 2pt FG from turnover in the paint, layup made (4)	<b>4-0</b>	<b>4</b>	
08:31	2 HALL C steal (1)			14 UPTON K turnover bad pass (1)
08:25	23 LOVE K 2pt FG from turnover in the paint, layup missed			
08:21				10 MOORE C defensive rebound (1)
08:20				14 UPTON K 2pt FG in the paint, layup blocked
08:20	5 CHAMBERS Y block (1)			
08:20				offensive rebound (3)
08:07		<b>4-3</b>	<b>1</b>	34 DOWDELL M 3pt FG second chance, jump shot made (3)
08:07				14 UPTON K assist (1)
07:52	23 LOVE K foul offensive (1 - 1)			24 DAVIS J foul drawn (1)
07:52	23 LOVE K turnover offensive (1)			
07:42				34 DOWDELL M turnover travel (2)
07:25	2 HALL C 2pt FG from turnover outside the paint, jump shot missed			
07:16	5 CHAMBERS Y offensive rebound (2)			
07:13	5 CHAMBERS Y turnover lost ball (1)			34 DOWDELL M steal (1)
06:58				34 DOWDELL M turnover lost ball (3)
06:47	23 LOVE K 3pt FG from turnover, jump shot missed			
06:42				14 UPTON K defensive rebound (2)
06:31				44 STAFFORD E 2pt FG in the paint, jump shot missed
06:26				44 STAFFORD E offensive rebound (1)
06:24		<b>4-5</b>	<b>-1</b>	44 STAFFORD E 2pt FG second chance in the paint, jump shot made (2)
06:15	2 HALL C 2pt FG in the paint, jump shot missed			
06:11				34 DOWDELL M defensive rebound (1)
06:02				24 DAVIS J 2pt FG in the paint, layup missed
05:59	23 LOVE K defensive rebound (1)			
05:57	23 LOVE K foul drawn (1)			34 DOWDELL M foul shooting (1 - 1)
05:57	23 LOVE K free throw fast break 1 - 2 made (5)	<b>5-5</b>	<b>0</b>	
05:57	23 LOVE K free throw fast break 2 - 2 made (6)	<b>6-5</b>	<b>1</b>	
05:57	2 HALL C substitution out			
05:57	0 LACHANCE B substitution in			
05:44	15 ALEXANDER B steal (1)			44 STAFFORD E turnover lost ball (1)
05:39	15 ALEXANDER B 2pt FG fast break from turnover in the paint, layup made (2)	<b>8-5</b>	<b>3</b>	



## ETSU at Vanderbilt

12/08/20 Memorial Gymnasium, Nashville  
2020-21 Women's Basketball

Officials: Dee Kantner, Cameron Inouye, Laura Morris

Game Time	Vandy	Score	Diff	ETSU
05:23	0 LACHANCE B foul personal (1 - 2)			14 UPTON K foul drawn (1)
05:08				10 MOORE C 3pt FG , jump shot missed
05:04				24 DAVIS J offensive rebound (1)
05:02				24 DAVIS J 2pt FG second chance in the paint, layup missed
05:00	23 LOVE K defensive rebound (2)			
04:57	1 PEHADZIC E turnover travel (1)			
04:57	Timeout media			
04:56				10 MOORE C substitution out
04:56				34 DOWDELL M substitution out
04:56				2 WILLIAMS I substitution in
04:56				23 SANDERS J substitution in
04:44				44 STAFFORD E 3pt FG from turnover, jump shot missed
04:40				24 DAVIS J offensive rebound (2)
04:30				23 SANDERS J 3pt FG from turnover second chance, jump shot missed
04:25				14 UPTON K offensive rebound (3)
04:23		<b>8-7</b>	<b>1</b>	14 UPTON K 2pt FG from turnover second chance in the paint, layup made (2)
04:09	5 CHAMBERS Y substitution out			
04:09	44 BOWMAN E substitution in			
04:09				24 DAVIS J substitution out
04:09				13 JACKSON S substitution in
03:57	1 PEHADZIC E 3pt FG , jump shot made (3)	<b>11-7</b>	<b>4</b>	
03:57	15 ALEXANDER B assist (1)			
03:42				13 JACKSON S turnover travel (1)
03:30	23 LOVE K foul drawn (2)			2 WILLIAMS I foul shooting (1 - 2)
03:30	1 PEHADZIC E substitution out			
03:30	22 BARTRAM B substitution in			
03:30	23 LOVE K free throw 1 - 2 made (7)	<b>12-7</b>	<b>5</b>	
03:30	23 LOVE K free throw 2 - 2 made (8)	<b>13-7</b>	<b>6</b>	
03:14		<b>13-9</b>	<b>4</b>	13 JACKSON S 2pt FG in the paint, layup made (2)
02:58	2 HALL C 2pt FG in the paint, layup missed			
02:53				2 WILLIAMS I defensive rebound (1)
02:51				14 UPTON K turnover bad pass (2)
02:38	23 LOVE K 3pt FG from turnover, jump shot missed			
02:35	15 ALEXANDER B offensive rebound (1)			
02:29	15 ALEXANDER B 3pt FG from turnover second chance, jump shot missed			
02:27				defensive rebound (11)
02:27	0 LACHANCE B substitution out			
02:27	2 HALL C substitution in			
02:14	44 BOWMAN E foul shooting (1 - 3)			44 STAFFORD E foul drawn (1)
02:14		<b>13-10</b>	<b>3</b>	44 STAFFORD E free throw 1 - 2 made (3)
02:14		<b>13-11</b>	<b>2</b>	44 STAFFORD E free throw 2 - 2 made (4)
02:14				44 STAFFORD E substitution out
02:14				21 ADAMS A substitution in
02:01	22 BARTRAM B foul offensive (1 - 4)			23 SANDERS J foul drawn (1)
02:01	22 BARTRAM B turnover offensive (1)			
01:47				23 SANDERS J 2pt FG from turnover in the paint, layup missed
01:45				2 WILLIAMS I offensive rebound (2)



**ETSU at Vanderbilt**

12/08/20 Memorial Gymnasium, Nashville  
2020-21 Women's Basketball

**Officials:** Dee Kantner, Cameron Inouye, Laura Morris

Game Time	Vandy	Score	Diff	ETSU
01:45				2 WILLIAMS I 2pt FG from turnover second chance in the paint, jump shot blocked
01:45	15 ALEXANDER B block (1)			
01:45	defensive rebound (7)			
01:40	15 ALEXANDER B foul drawn (1)			2 WILLIAMS I foul personal (2 - 3)
01:33	1 PEHADZIC E foul drawn (1)			14 UPTON K foul personal (1 - 4)
01:27	44 BOWMAN E substitution out			
01:27	1 PEHADZIC E substitution in			
01:27				14 UPTON K substitution out
01:27				1 HOOKS C substitution in
01:29	22 BARTRAM B 3pt FG , jump shot missed			
01:29				defensive rebound (13)
01:12		<b>13-13</b>	<b>0</b>	13 JACKSON S 2pt FG in the paint, layup made (4)
01:12				1 HOOKS C assist (1)
00:48	15 ALEXANDER B turnover lost ball (1)			13 JACKSON S steal (1)
00:40		<b>13-15</b>	<b>-2</b>	1 HOOKS C 2pt FG fast break from turnover in the paint, layup made (2)
00:30	23 LOVE K substitution out			
00:30	5 CHAMBERS Y substitution in			
00:23	2 HALL C 2pt FG in the paint, jump shot missed			
00:19				23 SANDERS J defensive rebound (1)
00:07				21 ADAMS A 2pt FG in the paint, layup blocked
00:07	5 CHAMBERS Y block (2)			
00:07				offensive rebound (15)
00:00		<b>13-17</b>	<b>-4</b>	1 HOOKS C 2pt FG second chance in the paint, layup made (4)
<b>END OF PERIOD</b>				
<b>Vandy 13-17 ETSU</b>				



**ETSU at Vanderbilt**

12/08/20 Memorial Gymnasium, Nashville  
2020-21 Women's Basketball

Officials: Dee Kantner, Cameron Inouye, Laura Morris

**ETSU - 17**

NO.	Name	Min	FG			Rebounds			Fouls		TP	AS	TO	ST	Blocks		+/-
			M-A	M-A	M-A	OR	DR	TOT	PF	FD					BS	BA	
34	Mykia Dowdell	F 05:04	1-1	1-1	0-0	0	1	1	1	0	3	0	3	1	0	0	-3
44	E'Lease Stafford	F 07:46	1-4	0-1	2-2	1	0	1	0	1	4	0	1	0	0	0	-2
24	Jakhyia Davis	C 05:51	0-2	0-0	0-0	2	0	2	0	1	0	0	0	0	0	0	-1
10	Courtney Moore	G 05:04	0-1	0-1	0-0	0	1	1	0	0	0	0	0	0	0	0	-3
14	Kaia Upton	G 08:33	1-2	0-0	0-0	1	2	3	1	1	2	1	2	0	0	1	-2
2	Imani Williams	04:56	0-1	0-0	0-0	1	1	2	2	0	0	0	0	0	0	1	7
23	Jasmine Sanders	04:56	0-2	0-1	0-0	0	1	1	0	1	0	0	0	0	0	0	7
13	Shynia Jackson	04:09	2-2	0-0	0-0	0	0	0	0	0	4	0	1	1	0	0	5
21	Amaya Adams	02:14	0-1	0-0	0-0	0	0	0	0	0	0	0	0	0	0	1	6
1	Carly Hooks	01:27	2-2	0-0	0-0	0	0	0	0	0	4	1	0	0	0	0	6
Team						2	2	4			0		0				
<b>Totals</b>			7-18	1-4	2-2	7	8	15	4	4	17	2	7	2	0	3	4

Shooting By Period		
1st FG%	7-18	38.9%
3PT%	1-4	25.0%
FT%	2-2	100%
GM FG%	7-18	38.9%
3PT%	1-4	25.0%
FT%	2-2	100.0%

Dead Ball Rebounds: 0, 0

Technical Fouls::NONE

**Vanderbilt - 13**

NO.	Name	Min	FG			Rebounds			Fouls		TP	AS	TO	ST	Blocks		+/-
			M-A	M-A	M-A	OR	DR	TOT	PF	FD					BS	BA	
5	Yaubryon Chambers	F 06:21	0-0	0-0	0-0	1	1	2	0	0	0	0	1	0	2	0	-1
15	Brinae Alexander	F 10:00	1-3	0-1	0-0	1	0	1	0	1	2	1	1	1	1	0	-4
23	Koi Love	F 09:30	2-5	0-2	4-4	0	2	2	1	2	8	0	1	0	0	0	-2
1	Enna Pehadzic	G 07:57	1-2	1-2	0-0	0	0	0	0	1	3	0	1	0	0	0	-2
2	Chelsie Hall	G 06:30	0-4	0-0	0-0	0	0	0	0	0	0	0	0	1	0	0	-7
0	Bella LaChance	03:30	0-0	0-0	0-0	0	0	0	1	0	0	0	0	0	0	0	3
44	Emily Bowman	02:42	0-0	0-0	0-0	0	0	0	1	0	0	0	0	0	0	0	1
22	Brylee Bartram	03:30	0-1	0-1	0-0	0	0	0	1	0	0	0	1	0	0	0	-8
Team						1	1	2			0		0				
<b>Totals</b>			4-15	1-6	4-4	3	4	7	4	4	13	1	5	2	3	0	-4

Shooting By Period		
1st FG%	4-15	26.7%
3PT%	1-6	16.7%
FT%	4-4	100%
GM FG%	4-15	26.7%
3PT%	1-6	16.7%
FT%	4-4	100.0%

Dead Ball Rebounds: 0, 0

Technical Fouls::NONE

	ETSU	Vandy
Biggest lead	4 (1 <sup>st</sup> 0:00)	6 (1 <sup>st</sup> 3:30)
Best Scoring Run	10 (1 <sup>st</sup> 0:00)	5 (1 <sup>st</sup> 3:30)
Lead Changes	3	
Times Tied	2	
Time with Lead	01:08	08:03

Points from	ETSU	Vandy
Turnovers	4	6
Paint	12	6
Second Chance	9	2
Fast Breaks	2	4
Bench	8	0

	Period by Period Scoring				
	1st	2nd	3rd	4th	TOT
ETSU	17	14	7	23	61
Vandy	13	25	28	15	81



**ETSU at Vanderbilt**

12/08/20 Memorial Gymnasium, Nashville  
2020-21 Women's Basketball

Officials: Dee Kantner, Cameron Inouye, Laura Morris

**Period 2**

**Quarter Starters:**

<b>Vandy</b>	1 Pehadzic E	2 Hall C	5 Chambers Y	15 Alexander B	23 Love K
<b>ETSU</b>	1 Hooks C	5 Carrington A	13 Jackson S	21 Adams A	23 Sanders J

Game Time	Vandy	Score	Diff	ETSU
10:00	22 BARTRAM B substitution out			
10:00	23 LOVE K substitution in			
10:00				2 WILLIAMS I substitution out
10:00				5 CARRINGTON A substitution in
09:45				23 SANDERS J 2pt FG in the paint, jump shot missed
09:42				1 HOOKS C offensive rebound (1)
09:40				1 HOOKS C 2pt FG second chance outside the paint, jump shot missed
09:36	23 LOVE K defensive rebound (3)			
09:33	1 PEHADZIC E 3pt FG fast break, jump shot made (6)	<b>16-17</b>	<b>-1</b>	
09:33	23 LOVE K assist (1)			
09:18				1 HOOKS C turnover travel (1)
09:00	23 LOVE K 2pt FG from turnover in the paint, layup made (10)	<b>18-17</b>	<b>1</b>	
08:52				5 CARRINGTON A substitution out
08:52				34 DOWDELL M substitution in
08:42				13 JACKSON S 2pt FG in the paint, jump shot blocked
08:42	23 LOVE K block (1)			
08:37	23 LOVE K defensive rebound (4)			
08:37	23 LOVE K foul drawn (3)			34 DOWDELL M foul shooting (2 - 1)
08:37				34 DOWDELL M substitution out
08:37				24 DAVIS J substitution in
08:37	23 LOVE K free throw fast break 1 - 2 made (11)	<b>19-17</b>	<b>2</b>	
08:37	23 LOVE K free throw fast break 2 - 2 missed			
08:37				24 DAVIS J defensive rebound (3)
08:29	23 LOVE K steal (1)			1 HOOKS C turnover lost ball (2)
08:18	23 LOVE K 2pt FG from turnover in the paint, layup missed			
08:17				1 HOOKS C defensive rebound (2)
08:16	1 PEHADZIC E foul personal (1 - 1)			2 WILLIAMS I foul drawn (1)
08:06				21 ADAMS A substitution out
08:06				2 WILLIAMS I substitution in
08:03		<b>19-20</b>	<b>-1</b>	13 JACKSON S 3pt FG , jump shot made (7)
08:03				14 UPTON K assist (2)
07:54	1 PEHADZIC E 3pt FG , jump shot made (9)	<b>22-20</b>	<b>2</b>	
07:40				1 HOOKS C substitution out
07:40				2 WILLIAMS I substitution out
07:40				14 UPTON K substitution in
07:40				21 ADAMS A substitution in
07:36		<b>22-22</b>	<b>0</b>	21 ADAMS A 2pt FG in the paint, layup made (2)
07:36				23 SANDERS J assist (1)
07:30	15 ALEXANDER B 3pt FG , jump shot made (5)	<b>25-22</b>	<b>3</b>	
07:30	1 PEHADZIC E assist (1)			
07:08				23 SANDERS J substitution out
07:08				44 STAFFORD E substitution in



**ETSU at Vanderbilt**

12/08/20 Memorial Gymnasium, Nashville  
2020-21 Women's Basketball

**Officials:** Dee Kantner, Cameron Inouye, Laura Morris

Game Time	Vandy	Score	Diff	ETSU
06:59	44 BOWMAN E steal (1)			13 JACKSON S turnover bad pass (2)
06:53	1 PEHADZIC E 3pt FG from turnover, jump shot missed			
06:51	44 BOWMAN E offensive rebound (1)			
06:51	5 CHAMBERS Y substitution out			
06:51	44 BOWMAN E substitution in			
06:51	44 BOWMAN E foul drawn (1)			24 DAVIS J foul shooting (1 - 2)
06:51	44 BOWMAN E free throw fast break 1 - 2 missed			
06:51	offensive dead ball rebound (1)			
06:51	44 BOWMAN E free throw fast break 2 - 2 made (1)	<b>26-22</b>	<b>4</b>	
06:36				24 DAVIS J turnover 3 seconds (1)
06:25	15 ALEXANDER B 3pt FG from turnover, jump shot missed			
06:24				24 DAVIS J defensive rebound (4)
06:24	44 BOWMAN E foul personal (2 - 2)			24 DAVIS J foul drawn (2)
06:24	22 BARTRAM B substitution in			
06:24	44 BOWMAN E substitution out			
06:24				21 ADAMS A substitution out
06:24				10 MOORE C substitution in
06:13	2 HALL C foul drawn (1)			13 JACKSON S foul offensive (1 - 3)
06:13				13 JACKSON S turnover offensive (3)
06:01	23 LOVE K 2pt FG from turnover in the paint, jump shot made (13)	<b>28-22</b>	<b>6</b>	
05:46				10 MOORE C turnover lost ball (1)
05:22	1 PEHADZIC E 2pt FG from turnover outside the paint, jump shot missed			
05:14	23 LOVE K offensive rebound (5)			
05:14	23 LOVE K turnover lost ball (2)			10 MOORE C steal (1)
05:07		<b>28-24</b>	<b>4</b>	13 JACKSON S 2pt FG from turnover in the paint, jump shot made (9)
04:59	22 BARTRAM B 3pt FG , jump shot missed			
04:55				14 UPTON K defensive rebound (4)
04:43				44 STAFFORD E 3pt FG , jump shot missed
04:41	defensive rebound (12)			
04:41				44 STAFFORD E substitution out
04:41				23 SANDERS J substitution in
04:20	22 BARTRAM B 3pt FG , jump shot missed			
04:16	23 LOVE K offensive rebound (6)			
04:13	1 PEHADZIC E 2pt FG second chance in the paint, layup missed			
04:12	2 HALL C offensive rebound (1)			
04:12	2 HALL C foul drawn (2)			10 MOORE C foul personal (1 - 4)
04:02	1 PEHADZIC E 3pt FG second chance, jump shot made (12)	<b>31-24</b>	<b>7</b>	
04:02	22 BARTRAM B assist (1)			
03:34		<b>31-26</b>	<b>5</b>	24 DAVIS J 2pt FG outside the paint, jump shot made (2)
03:34				13 JACKSON S assist (1)
03:25	23 LOVE K 2pt FG in the paint, layup made (15)	<b>33-26</b>	<b>7</b>	
03:25	1 PEHADZIC E assist (2)			
03:08		<b>33-28</b>	<b>5</b>	24 DAVIS J 2pt FG in the paint, jump shot made (4)
03:01	15 ALEXANDER B 3pt FG , jump shot missed			
02:58				10 MOORE C defensive rebound (2)
02:58	23 LOVE K foul personal (2 - 3)			10 MOORE C foul drawn (1)



**ETSU at Vanderbilt**

12/08/20 Memorial Gymnasium, Nashville  
2020-21 Women's Basketball

**Officials:** Dee Kantner, Cameron Inouye, Laura Morris

Game Time	Vandy	Score	Diff	ETSU
02:54	23 LOVE K substitution out			
02:54	5 CHAMBERS Y substitution in			
02:54				13 JACKSON S substitution out
02:54				21 ADAMS A substitution in
02:44	5 CHAMBERS Y steal (1)			21 ADAMS A turnover lost ball (1)
02:37	1 PEHADZIC E 3pt FG from turnover, jump shot missed			
02:36	1 PEHADZIC E offensive rebound (1)			
02:35	1 PEHADZIC E foul drawn (2)			23 SANDERS J foul shooting (1 - 5)
02:35	1 PEHADZIC E free throw 1 - 2 made (13)	<b>34-28</b>	<b>6</b>	
02:35	1 PEHADZIC E free throw 2 - 2 missed			
02:35	15 ALEXANDER B offensive rebound (2)			
02:30	1 PEHADZIC E 3pt FG second chance, jump shot missed			
02:29	15 ALEXANDER B offensive rebound (3)			
02:29	15 ALEXANDER B foul drawn (2)			23 SANDERS J foul personal (2 - 6)
02:29				23 SANDERS J substitution out
02:29				44 STAFFORD E substitution in
02:29	15 ALEXANDER B free throw 1 - 2 made (6)	<b>35-28</b>	<b>7</b>	
02:29	15 ALEXANDER B free throw 2 - 2 made (7)	<b>36-28</b>	<b>8</b>	
02:16	22 BARTRAM B steal (1)			21 ADAMS A turnover bad pass (2)
02:09	1 PEHADZIC E 2pt FG from turnover in the paint, layup missed			
02:09	2 HALL C offensive rebound (2)			
02:09	15 ALEXANDER B foul personal (1 - 4)			21 ADAMS A foul drawn (1)
02:05	2 HALL C 2pt FG from turnover second chance in the paint, layup missed			
02:02				21 ADAMS A defensive rebound (1)
01:57	22 BARTRAM B foul personal (2 - 5)			10 MOORE C foul drawn (2)
01:57		<b>36-29</b>	<b>7</b>	10 MOORE C free throw fast break 1 - 2 made (1)
01:57		<b>36-30</b>	<b>6</b>	10 MOORE C free throw fast break 2 - 2 made (2)
01:51	15 ALEXANDER B substitution out			
01:51	0 LACHANCE B substitution in			
01:48	22 BARTRAM B 3pt FG , jump shot missed			
01:42				44 STAFFORD E defensive rebound (2)
01:26	2 HALL C foul personal (1 - 6)			44 STAFFORD E foul drawn (2)
01:26				44 STAFFORD E free throw 1 - 2 missed
01:26				offensive dead ball rebound (1)
01:26		<b>36-31</b>	<b>5</b>	44 STAFFORD E free throw 2 - 2 made (5)
01:15	5 CHAMBERS Y 2pt FG in the paint, layup missed			
01:12				24 DAVIS J defensive rebound (5)
00:53				44 STAFFORD E 2pt FG in the paint, layup missed
00:51				10 MOORE C offensive rebound (3)
00:51				Timeout 30 Sec
00:51	0 LACHANCE B substitution out			
00:51	15 ALEXANDER B substitution in			
00:48				24 DAVIS J 2pt FG second chance in the paint, layup missed
00:47	defensive rebound (19)			
00:38	2 HALL C turnover lost ball (1)			14 UPTON K steal (1)
00:19				24 DAVIS J 3pt FG from turnover, jump shot missed
00:18	defensive rebound (20)			
00:18	5 CHAMBERS Y substitution out			





Official Basketball Play by Play - 2nd Period

**ETSU at Vanderbilt**

12/08/20 Memorial Gymnasium, Nashville  
2020-21 Women's Basketball

**Game Time:** 7:00 PM  
**Game Duration:** 2:09

**Officials:** Dee Kantner, Cameron Inouye, Laura Morris

Game Time	Vandy	Score	Diff	ETSU
00:18	23 LOVE K substitution in			
00:03	2 HALL C 2pt FG in the paint, layup made (2)	<b>38-31</b>	<b>7</b>	
<b>END OF PERIOD</b>				
<b>Vandy 38-31 ETSU</b>				



**ETSU at Vanderbilt**

12/08/20 Memorial Gymnasium, Nashville  
2020-21 Women's Basketball

Officials: Dee Kantner, Cameron Inouye, Laura Morris

**ETSU - 14**

NO.	Name	F	Min	FG	3P	FT	Rebounds			Fouls		TP	AS	TO	ST	Blocks		+/-
				M-A	M-A	M-A	OR	DR	TOT	PF	FD					BS	BA	
34	Mykia Dowdell	F	00:15	0-0	0-0	0-0	0	0	0	1	0	0	0	0	0	0	0	0
44	E'Lease Stafford	F	04:56	0-2	0-1	1-2	0	1	1	0	1	1	0	0	0	0	0	-2
24	Jakhyia Davis	C	08:37	2-4	0-1	0-0	0	3	3	1	1	4	0	1	0	0	0	-6
10	Courtney Moore	G	06:24	0-0	0-0	2-2	1	1	2	1	2	2	0	1	1	0	0	-3
14	Kaia Upton	G	07:40	0-0	0-0	0-0	0	1	1	0	0	0	1	0	1	0	0	-5
1	Carly Hooks		02:20	0-1	0-0	0-0	1	1	2	0	0	0	0	2	0	0	0	-6
13	Shynia Jackson		07:06	2-3	1-1	0-0	0	0	0	1	0	5	1	2	0	0	1	-9
5	Abby Carrington		01:08	0-0	0-0	0-0	0	0	0	0	0	0	0	0	0	0	0	-5
2	Imani Williams		00:26	0-0	0-0	0-0	0	0	0	0	1	0	0	0	0	0	0	0
21	Amaya Adams		06:04	1-1	0-0	0-0	0	1	1	0	1	2	0	2	0	0	0	-10
23	Jasmine Sanders		05:04	0-1	0-0	0-0	0	0	0	2	0	0	1	0	0	0	0	-9
Team							0	0	0			0		0				
<b>Totals</b>				5-12	1-3	3-4	2	8	10	6	6	14	3	8	2	0	1	-11

Shooting By Period		
2 <sup>nd</sup> FG%	5-12	41.7%
3PT%	1-3	33.3%
FT%	3-4	75%
GM FG%	5-12	41.7%
3PT%	1-3	33.3%
FT%	3-4	75.0%

Dead Ball Rebounds: 1, 0

Technical Fouls::NONE

**Vanderbilt - 25**

NO.	Name	F	Min	FG	3P	FT	Rebounds			Fouls		TP	AS	TO	ST	Blocks		+/-
				M-A	M-A	M-A	OR	DR	TOT	PF	FD					BS	BA	
5	Yaubryon Chambers	F	05:44	0-1	0-0	0-0	0	0	0	0	0	0	0	0	1	0	0	7
15	Brinae Alexander	F	09:01	1-3	1-3	2-2	2	0	2	1	1	5	0	0	0	0	0	12
23	Koi Love	F	07:25	3-4	0-0	1-2	2	2	4	1	1	7	1	1	1	1	0	11
1	Enna Pehadzic	G	10:00	3-9	3-6	1-2	1	0	1	1	1	10	2	0	0	0	0	11
2	Chelsie Hall	G	10:00	1-2	0-0	0-0	2	0	2	1	2	2	0	1	0	0	0	11
44	Emily Bowman		00:27	0-0	0-0	1-2	1	0	1	1	1	1	0	0	1	0	0	1
22	Brylee Bartram		06:24	0-3	0-3	0-0	0	0	0	1	0	0	1	0	1	0	0	3
0	Bella LaChance		00:59	0-0	0-0	0-0	0	0	0	0	0	0	0	0	0	0	0	-1
Team							0	3	3			0		0				
<b>Totals</b>				8-22	4-12	5-8	8	5	13	6	6	25	4	2	4	1	0	11

Shooting By Period		
2 <sup>nd</sup> FG%	8-22	36.4%
3PT%	4-12	33.3%
FT%	5-8	62.5%
GM FG%	8-22	36.4%
3PT%	4-12	33.3%
FT%	5-8	62.5%

Dead Ball Rebounds: 1, 0

Technical Fouls::NONE

	ETSU	Vandy
Biggest lead	4 (2 <sup>nd</sup> 9:45)	8 (2 <sup>nd</sup> 2:29)
Best Scoring Run	3 (2 <sup>nd</sup> 8:03)	6 (2 <sup>nd</sup> 8:37)
Lead Changes	3	
Times Tied	1	
Time with Lead	00:54	08:45

Points from	ETSU	Vandy
Turnovers	2	6
Paint	6	8
Second Chance	0	7
Fast Breaks	2	5
Bench	7	1

	Period by Period Scoring				
	1st	2nd	3rd	4th	TOT
ETSU	17	14	7	23	61
Vandy	13	25	28	15	81



**ETSU at Vanderbilt**

12/08/20 Memorial Gymnasium, Nashville  
2020-21 Women's Basketball

Officials: Dee Kantner, Cameron Inouye, Laura Morris

**ETSU - 31**

NO.	Name	F	Min	FG			Rebounds			Fouls		TP	AS	TO	ST	Blocks		+/-
				M-A	M-A	M-A	OR	DR	TOT	PF	FD					BS	BA	
34	Mykia Dowdell	F	05:19	1-1	1-1	0-0	0	1	1	2	0	3	0	3	1	0	0	-3
44	E'Lease Stafford	F	12:42	1-6	0-2	3-4	1	1	2	0	2	5	0	1	0	0	0	-4
24	Jakhyia Davis	C	14:28	2-6	0-1	0-0	2	3	5	1	2	4	0	1	0	0	0	-7
10	Courtney Moore	G	11:28	0-1	0-1	2-2	1	2	3	1	2	2	0	1	1	0	0	-6
14	Kaia Upton	G	16:13	1-2	0-0	0-0	1	3	4	1	1	2	2	2	1	0	1	-7
2	Imani Williams		05:22	0-1	0-0	0-0	1	1	2	2	1	0	0	0	0	0	1	7
23	Jasmine Sanders		10:00	0-3	0-1	0-0	0	1	1	2	1	0	1	0	0	0	0	-2
13	Shynia Jackson		11:15	4-5	1-1	0-0	0	0	0	1	0	9	1	3	1	0	1	-4
21	Amaya Adams		08:18	1-2	0-0	0-0	0	1	1	0	1	2	0	2	0	0	1	-4
1	Carly Hooks		03:47	2-3	0-0	0-0	1	1	2	0	0	4	1	2	0	0	0	0
5	Abby Carrington		01:08	0-0	0-0	0-0	0	0	0	0	0	0	0	0	0	0	0	-5
Team							2	2	4			0		0				
<b>Totals</b>				12-30	2-7	5-6	9	16	25	10	10	31	5	15	4	0	4	-7

Shooting By Period		
1 <sup>st</sup> FG%	7-18	38.9%
3PT%	1-4	25.0%
FT%	2-2	100%
2 <sup>nd</sup> FG%	5-12	41.7%
3PT%	1-3	33.3%
FT%	3-4	75%
GM FG%	12-30	40.0%
3PT%	2-7	28.6%
FT%	5-6	83.3%

Dead Ball Rebounds: 1, 0

Technical Fouls::NONE

**Vanderbilt - 38**

NO.	Name	F	Min	FG			Rebounds			Fouls		TP	AS	TO	ST	Blocks		+/-
				M-A	M-A	M-A	OR	DR	TOT	PF	FD					BS	BA	
5	Yaubryon Chambers	F	12:05	0-1	0-0	0-0	1	1	2	0	0	0	0	1	1	2	0	6
15	Brinae Alexander	F	19:01	2-6	1-4	2-2	3	0	3	1	2	7	1	1	1	1	0	8
23	Koi Love	F	16:55	5-9	0-2	5-6	2	4	6	2	3	15	1	2	1	1	0	9
1	Enna Pehadzic	G	17:57	4-11	4-8	1-2	1	0	1	1	2	13	2	1	0	0	0	9
2	Chelsie Hall	G	16:30	1-6	0-0	0-0	2	0	2	1	2	2	0	1	1	0	0	4
0	Bella LaChance		04:29	0-0	0-0	0-0	0	0	0	1	0	0	0	0	0	0	0	2
44	Emily Bowman		03:09	0-0	0-0	1-2	1	0	1	2	1	1	0	0	1	0	0	2
22	Brylee Bartram		09:54	0-4	0-4	0-0	0	0	0	2	0	0	1	1	1	0	0	-5
Team							1	4	5			0		0				
<b>Totals</b>				12-37	5-18	9-12	11	9	20	10	10	38	5	7	6	4	0	7

Shooting By Period		
1 <sup>st</sup> FG%	4-15	26.7%
3PT%	1-6	16.7%
FT%	4-4	100%
2 <sup>nd</sup> FG%	8-22	36.4%
3PT%	4-12	33.3%
FT%	5-8	62.5%
GM FG%	12-37	32.4%
3PT%	5-18	27.8%
FT%	9-12	75.0%

Dead Ball Rebounds: 1, 0

Technical Fouls::NONE

	ETSU	Vandy
Biggest lead	4 (1 <sup>st</sup> 0:00)	8 (2 <sup>nd</sup> 2:29)
Best Scoring Run	10 (1 <sup>st</sup> 0:00)	6 (2 <sup>nd</sup> 8:37)
Lead Changes	6	
Times Tied	3	
Time with Lead	02:17	16:48

Points from	ETSU	Vandy
Turnovers	6	12
Paint	18	14
Second Chance	9	9
Fast Breaks	4	9
Bench	15	1

	Period by Period Scoring				
	1st	2nd	3rd	4th	TOT
ETSU	17	14	7	23	61
Vandy	13	25	28	15	81



## Period 3

## Quarter Starters:

<b>Vandy</b>	1 Pehadzic E	2 Hall C	15 Alexander B	23 Love K	5 Chambers Y
<b>ETSU</b>	10 Moore C	14 Upton K	24 Davis J	44 Stafford E	34 Dowdell M

Game Time	Vandy	Score	Diff	ETSU
10:00	22 BARTRAM B substitution out			
10:00	5 CHAMBERS Y substitution in			
10:00				21 ADAMS A substitution out
10:00				34 DOWDELL M substitution in
09:47	15 ALEXANDER B 2pt FG in the paint, layup blocked			
09:47				24 DAVIS J block (1)
09:42				44 STAFFORD E defensive rebound (3)
09:25				24 DAVIS J 2pt FG in the paint, jump shot missed
09:22				10 MOORE C offensive rebound (4)
09:20				14 UPTON K 3pt FG second chance, jump shot missed
09:14				24 DAVIS J offensive rebound (6)
09:13				24 DAVIS J 2pt FG second chance in the paint, jump shot missed
09:13	defensive rebound (21)			
08:57	1 PEHADZIC E 2pt FG in the paint, jump shot made (15)	<b>40-31</b>	<b>9</b>	
08:42	23 LOVE K steal (2)			44 STAFFORD E turnover lost ball (2)
08:35	1 PEHADZIC E 2pt FG fast break from turnover in the paint, layup made (17)	<b>42-31</b>	<b>11</b>	
08:35	2 HALL C assist (1)			
08:14				10 MOORE C 3pt FG , jump shot missed
08:14				24 DAVIS J offensive rebound (7)
08:14	jump ball situation			
08:11				23 SANDERS J 2pt FG second chance in the paint, layup missed
08:09	23 LOVE K defensive rebound (7)			
08:09	jump ball situation			
07:50	1 PEHADZIC E 2pt FG outside the paint, jump shot missed			
07:49	23 LOVE K offensive rebound (8)			
07:49	15 ALEXANDER B 3pt FG second chance, jump shot missed			
07:47				24 DAVIS J defensive rebound (8)
07:31				34 DOWDELL M 2pt FG in the paint, jump shot blocked
07:31	5 CHAMBERS Y block (3)			
07:31	1 PEHADZIC E defensive rebound (2)			
07:28	23 LOVE K 2pt FG in the paint, layup made (17)	<b>44-31</b>	<b>13</b>	
07:28	1 PEHADZIC E assist (3)			
07:26				Timeout 60 Sec
07:26				44 STAFFORD E substitution out
07:26				23 SANDERS J substitution in
07:19		<b>44-34</b>	<b>10</b>	10 MOORE C 3pt FG , jump shot made (5)
07:19				34 DOWDELL M assist (1)
07:02	1 PEHADZIC E turnover travel (2)			
06:34				23 SANDERS J 3pt FG from turnover, jump shot missed
06:31	5 CHAMBERS Y defensive rebound (3)			
06:20	2 HALL C foul drawn (3)			10 MOORE C foul shooting (2 - 1)



**ETSU at Vanderbilt**

12/08/20 Memorial Gymnasium, Nashville  
2020-21 Women's Basketball

**Officials:** Dee Kantner, Cameron Inouye, Laura Morris

Game Time	Vandy	Score	Diff	ETSU
06:20				10 MOORE C substitution out
06:20				1 HOOKS C substitution in
06:20	2 HALL C free throw 1 - 2 made (3)	<b>45-34</b>	<b>11</b>	
06:20	2 HALL C free throw 2 - 2 made (4)	<b>46-34</b>	<b>12</b>	
05:56				1 HOOKS C turnover travel (3)
05:42	1 PEHADZIC E 2pt FG from turnover in the paint, layup made (19)	<b>48-34</b>	<b>14</b>	
05:19				1 HOOKS C 3pt FG , jump shot missed
05:13	1 PEHADZIC E defensive rebound (3)			
05:10	5 CHAMBERS Y turnover out of bounds (2)			
05:10	5 CHAMBERS Y substitution out			
05:10	44 BOWMAN E substitution in			
05:10				1 HOOKS C substitution out
05:10				23 SANDERS J substitution out
05:10				21 ADAMS A substitution in
05:10				44 STAFFORD E substitution in
05:10	2 HALL C substitution out			
05:10	0 LACHANCE B substitution in			
05:00				44 STAFFORD E 2pt FG from turnover outside the paint, jump shot missed
04:55	23 LOVE K defensive rebound (9)			
04:51	1 PEHADZIC E 2pt FG outside the paint, jump shot missed			
04:48	44 BOWMAN E offensive rebound (2)			
04:51	44 BOWMAN E 2pt FG second chance in the paint, layup missed			
04:49				34 DOWDELL M defensive rebound (2)
04:49	44 BOWMAN E foul personal (3 - 1)			34 DOWDELL M foul drawn (1)
04:49	Timeout media			
04:33				44 STAFFORD E 3pt FG , jump shot missed
04:30				21 ADAMS A offensive rebound (2)
04:26				24 DAVIS J turnover lost ball (2)
04:26	1 PEHADZIC E substitution out			
04:26	2 HALL C substitution in			
04:13	44 BOWMAN E foul offensive (4 - 2)			34 DOWDELL M foul drawn (2)
04:13	44 BOWMAN E turnover offensive (1)			
04:13	44 BOWMAN E substitution out			
04:13	5 CHAMBERS Y substitution in			
03:58	5 CHAMBERS Y foul shooting (1 - 3)			24 DAVIS J foul drawn (3)
03:58				24 DAVIS J free throw 1 - 2 missed
03:58				offensive dead ball rebound (2)
03:58				24 DAVIS J free throw 2 - 2 missed
03:57	23 LOVE K defensive rebound (10)			
03:47	15 ALEXANDER B foul drawn (3)			44 STAFFORD E foul shooting (1 - 2)
03:47	0 LACHANCE B substitution out			
03:47	22 BARTRAM B substitution in			
03:47	15 ALEXANDER B free throw 1 - 2 made (8)	<b>49-34</b>	<b>15</b>	
03:47	15 ALEXANDER B free throw 2 - 2 missed			
03:47				34 DOWDELL M defensive rebound (3)
03:37	2 HALL C steal (2)			34 DOWDELL M turnover lost ball (4)



**ETSU at Vanderbilt**

12/08/20 Memorial Gymnasium, Nashville  
2020-21 Women's Basketball

**Officials:** Dee Kantner, Cameron Inouye, Laura Morris

Game Time	Vandy	Score	Diff	ETSU
03:31	2 HALL C 2pt FG fast break from turnover in the paint, layup made (6)	<b>51-34</b>	<b>17</b>	
03:24	5 CHAMBERS Y foul shooting (2 - 4)			24 DAVIS J foul drawn (4)
03:24				24 DAVIS J free throw fast break 1 - 2 missed
03:24				offensive dead ball rebound (3)
03:24				24 DAVIS J free throw fast break 2 - 2 missed
03:24	15 ALEXANDER B defensive rebound (4)			
03:17	15 ALEXANDER B 2pt FG in the paint, jump shot missed			
03:14				14 UPTON K defensive rebound (5)
03:11				14 UPTON K 2pt FG in the paint, layup missed
03:08	5 CHAMBERS Y defensive rebound (4)			
03:04	23 LOVE K 2pt FG in the paint, layup missed			
03:01	5 CHAMBERS Y offensive rebound (5)			
02:58	15 ALEXANDER B 3pt FG second chance, jump shot missed			
02:56				44 STAFFORD E defensive rebound (4)
02:56	15 ALEXANDER B foul personal (2 - 5)			44 STAFFORD E foul drawn (3)
02:56	5 CHAMBERS Y substitution out			
02:56	1 PEHADZIC E substitution in			
02:56				21 ADAMS A substitution out
02:56				24 DAVIS J substitution out
02:56				2 WILLIAMS I substitution in
02:56				10 MOORE C substitution in
02:56				13 JACKSON S substitution in
02:56				34 DOWDELL M substitution out
02:56		<b>51-35</b>	<b>16</b>	44 STAFFORD E free throw fast break 1 - 2 made (6)
02:56		<b>51-36</b>	<b>15</b>	44 STAFFORD E free throw fast break 2 - 2 made (7)
02:56				44 STAFFORD E substitution out
02:56				1 HOOKS C substitution in
02:47	2 HALL C 2pt FG in the paint, layup made (8)	<b>53-36</b>	<b>17</b>	
02:47	2 HALL C foul drawn (4)			14 UPTON K foul shooting (2 - 3)
02:47	2 HALL C free throw 1 - 1 missed			
02:41	offensive rebound (33)			
02:41	Timeout 30 Sec			
02:36	23 LOVE K 2pt FG second chance in the paint, layup made (19)	<b>55-36</b>	<b>19</b>	
02:36	2 HALL C assist (2)			
02:17	22 BARTRAM B foul personal (3 - 6)			10 MOORE C foul drawn (3)
02:17				10 MOORE C free throw 1 - 2 missed
02:17				offensive dead ball rebound (4)
02:17		<b>55-37</b>	<b>18</b>	10 MOORE C free throw 2 - 2 made (6)
02:17				1 HOOKS C substitution out
02:17				2 WILLIAMS I substitution out
02:17				10 MOORE C substitution out
02:17				13 JACKSON S substitution out
02:17				14 UPTON K substitution out
02:17				21 ADAMS A substitution in
02:17				23 SANDERS J substitution in
02:17				24 DAVIS J substitution in
02:17				34 DOWDELL M substitution in
02:17				44 STAFFORD E substitution in



**ETSU at Vanderbilt**

12/08/20 Memorial Gymnasium, Nashville  
2020-21 Women's Basketball

**Officials:** Dee Kantner, Cameron Inouye, Laura Morris

Game Time	Vandy	Score	Diff	ETSU
02:08	15 ALEXANDER B 3pt FG , jump shot made (11)	<b>58-37</b>	<b>21</b>	
02:08	2 HALL C assist (3)			
01:41				24 DAVIS J 2pt FG in the paint, layup blocked
01:41	23 LOVE K block (2)			
01:35	15 ALEXANDER B defensive rebound (5)			
01:34	22 BARTRAM B 3pt FG fast break, jump shot made (3)	<b>61-37</b>	<b>24</b>	
01:34	15 ALEXANDER B assist (2)			
01:13	22 BARTRAM B steal (2)			34 DOWDELL M turnover bad pass (5)
01:10	22 BARTRAM B turnover travel (2)			
01:08	15 ALEXANDER B substitution out			
01:08	5 CHAMBERS Y substitution in			
00:56				24 DAVIS J 2pt FG from turnover in the paint, jump shot missed
00:53	5 CHAMBERS Y defensive rebound (6)			
00:49	5 CHAMBERS Y 2pt FG fast break in the paint, layup made (2)	<b>63-37</b>	<b>26</b>	
00:35	23 LOVE K foul shooting (3 - 7)			23 SANDERS J foul drawn (2)
00:35				21 ADAMS A substitution out
00:35				20 POST K substitution in
00:35	2 HALL C substitution out			
00:35	0 LACHANCE B substitution in			
00:35				23 SANDERS J free throw 1 - 2 missed
00:35				offensive dead ball rebound (5)
00:35		<b>63-38</b>	<b>25</b>	23 SANDERS J free throw 2 - 2 made (1)
00:23	22 BARTRAM B 3pt FG , jump shot made (6)	<b>66-38</b>	<b>28</b>	
00:23	0 LACHANCE B assist (1)			
00:08	23 LOVE K steal (3)			23 SANDERS J turnover bad pass (1)
00:00	22 BARTRAM B 3pt FG from turnover, jump shot missed			
00:00				34 DOWDELL M defensive rebound (4)
<b>END OF PERIOD</b>				
<b>Vandy 66-38 ETSU</b>				



**ETSU at Vanderbilt**

12/08/20 Memorial Gymnasium, Nashville  
2020-21 Women's Basketball

Officials: Dee Kantner, Cameron Inouye, Laura Morris

**ETSU - 7**

NO.	Name	F	Min	FG			Rebounds			Fouls		TP	AS	TO	ST	Blocks		+/-
				M-A	M-A	M-A	OR	DR	TOT	PF	FD					BS	BA	
34	Mykia Dowdell	F	09:21	0-1	0-0	0-0	0	3	3	0	2	0	1	2	0	1	-20	
44	E'Lease Stafford	F	07:05	0-2	0-1	2-2	0	2	2	1	1	2	0	1	0	0	-17	
24	Jakhyia Davis	C	09:21	0-4	0-0	0-4	2	1	3	0	2	0	0	1	0	1	-20	
10	Courtney Moore	G	04:19	1-2	1-2	1-2	1	0	1	1	1	4	0	0	0	0	-4	
14	Kaia Upton	G	07:43	0-2	0-1	0-0	0	1	1	1	0	0	0	0	0	0	-11	
23	Jasmine Sanders		04:33	0-2	0-1	1-2	0	0	0	0	1	1	0	1	0	0	-11	
1	Carly Hooks		01:49	0-1	0-1	0-0	0	0	0	0	0	0	0	1	0	0	-7	
21	Amaya Adams		03:55	0-0	0-0	0-0	1	0	1	0	0	0	0	0	0	0	-11	
2	Imani Williams		00:39	0-0	0-0	0-0	0	0	0	0	0	0	0	0	0	0	-1	
13	Shynia Jackson		00:39	0-0	0-0	0-0	0	0	0	0	0	0	0	0	0	0	-1	
20	Kelly Post		00:36	0-0	0-0	0-0	0	0	0	0	0	0	0	0	0	0	-2	
Team							0	0	0			0						
<b>Totals</b>				1-14	1-6	4-10	4	7	11	3	7	7	1	6	0	1	2	-21

Shooting By Period		
3 <sup>rd</sup> FG%	1-14	7.1%
3PT%	1-6	16.7%
FT%	4-10	40%
GM FG%	1-14	7.1%
3PT%	1-6	16.7%
FT%	4-10	40.0%

Dead Ball Rebounds: 4, 0

Technical Fouls::NONE

**Vanderbilt - 28**

NO.	Name	F	Min	FG			Rebounds			Fouls		TP	AS	TO	ST	Blocks		+/-
				M-A	M-A	M-A	OR	DR	TOT	PF	FD					BS	BA	
5	Yaubryon Chambers	F	07:15	1-1	0-0	0-0	1	3	4	2	0	2	0	1	0	1	0	14
15	Brinae Alexander	F	08:52	1-5	1-3	1-2	0	2	2	1	1	4	1	0	0	0	1	17
23	Koi Love	F	10:00	2-3	0-0	0-0	1	3	4	1	0	4	0	0	2	1	0	21
1	Enna Pehadzic	G	08:30	3-5	0-0	0-0	0	2	2	0	0	6	1	1	0	0	0	18
2	Chelsie Hall	G	08:40	2-2	0-0	2-3	0	0	0	0	2	6	3	0	1	0	0	19
0	Bella LaChance		01:59	0-0	0-0	0-0	0	0	0	0	0	0	1	0	0	0	2	
44	Emily Bowman		00:57	0-1	0-0	0-0	1	0	1	2	0	0	0	1	0	0	0	0
22	Brylee Bartram		03:47	2-3	2-3	0-0	0	0	0	1	0	6	0	1	1	0	0	14
Team							1	1	2			0						
<b>Totals</b>				11-20	3-6	3-5	4	11	15	7	3	28	6	4	4	2	1	21

Shooting By Period		
3 <sup>rd</sup> FG%	11-20	55.0%
3PT%	3-6	50.0%
FT%	3-5	60%
GM FG%	11-20	55.0%
3PT%	3-6	50.0%
FT%	3-5	60.0%

Dead Ball Rebounds: 0, 0

Technical Fouls::NONE

	ETSU	Vandy
Biggest lead	0 (1 <sup>st</sup> 10:00)	28 (3 <sup>rd</sup> 0:23)
Best Scoring Run	3(3 <sup>rd</sup> 7:19)	8(3 <sup>rd</sup> 0:49)
Lead Changes	0	
Times Tied	0	
Time with Lead	00:00	09:47

Points from	ETSU	Vandy
Turnovers	0	6
Paint	0	16
Second Chance	0	2
Fast Breaks	2	9
Bench	1	6

	Period by Period Scoring				
	1st	2nd	3rd	4th	TOT
ETSU	17	14	7	23	61
Vandy	13	25	28	15	81





**ETSU at Vanderbilt**

12/08/20 Memorial Gymnasium, Nashville  
2020-21 Women's Basketball

Officials: Dee Kantner, Cameron Inouye, Laura Morris

**Period 4**

**Quarter Starters:**

<b>Vandy</b>	0 LaChance B	1 Pehadzic E	5 Chambers Y	22 Bartram B	23 Love K
<b>ETSU</b>	20 Post K	23 Sanders J	24 Davis J	34 Dowdell M	44 Stafford E

Game Time	Vandy	Score	Diff	ETSU
09:52				23 SANDERS J 3pt FG , jump shot missed
09:47	0 LACHANCE B defensive rebound (1)			
09:43				23 SANDERS J substitution out
09:43				10 MOORE C substitution in
09:35	1 PEHADZIC E 3pt FG , jump shot missed			
09:29				44 STAFFORD E defensive rebound (5)
09:28	0 LACHANCE B foul drawn (1)			44 STAFFORD E foul offensive (2 - 1)
09:28				44 STAFFORD E turnover offensive (3)
09:14	22 BARTRAM B 3pt FG from turnover, jump shot missed			
09:10	0 LACHANCE B offensive rebound (2)			
09:05	1 PEHADZIC E 3pt FG from turnover second chance, jump shot missed			
08:58				20 POST K defensive rebound (1)
08:44		<b>66-41</b>	<b>25</b>	34 DOWDELL M 3pt FG , jump shot made (6)
08:44				24 DAVIS J assist (1)
08:34	1 PEHADZIC E 3pt FG , jump shot made (22)	<b>69-41</b>	<b>28</b>	
08:15	0 LACHANCE B foul shooting (2 - 1)			10 MOORE C foul drawn (4)
08:15	23 LOVE K substitution out			
08:15	15 ALEXANDER B substitution in			
08:15				44 STAFFORD E substitution out
08:15				21 ADAMS A substitution in
08:15		<b>69-42</b>	<b>27</b>	10 MOORE C free throw 1 - 2 made (7)
08:15		<b>69-43</b>	<b>26</b>	10 MOORE C free throw 2 - 2 made (8)
08:15				20 POST K substitution out
08:15				13 JACKSON S substitution in
08:06	22 BARTRAM B 3pt FG , jump shot missed			
08:02	5 CHAMBERS Y offensive rebound (7)			
08:01	15 ALEXANDER B foul offensive (3 - 2)			13 JACKSON S foul drawn (1)
08:01	15 ALEXANDER B turnover offensive (2)			
07:44		<b>69-45</b>	<b>24</b>	21 ADAMS A 2pt FG from turnover in the paint, layup made (4)
07:44				10 MOORE C assist (1)
07:34	Timeout 30 Sec			
07:34				Timeout media
07:32	0 LACHANCE B substitution out			
07:32	22 BARTRAM B substitution out			
07:32	2 HALL C substitution in			
07:32	23 LOVE K substitution in			
07:18	1 PEHADZIC E 3pt FG , jump shot made (25)	<b>72-45</b>	<b>27</b>	
07:18	2 HALL C assist (4)			
07:02				13 JACKSON S 3pt FG , jump shot missed
06:57				10 MOORE C offensive rebound (5)
06:56				10 MOORE C 2pt FG second chance in the paint, layup missed
06:54	5 CHAMBERS Y defensive rebound (8)			



**ETSU at Vanderbilt**

12/08/20 Memorial Gymnasium, Nashville  
2020-21 Women's Basketball

Officials: Dee Kantner, Cameron Inouye, Laura Morris

Game Time	Vandy	Score	Diff	ETSU
06:52	2 HALL C 2pt FG fast break in the paint, layup made (10)	<b>74-45</b>	<b>29</b>	
06:52	2 HALL C foul drawn (5)			10 MOORE C foul shooting (3 - 2)
06:52				10 MOORE C substitution out
06:52				20 POST K substitution in
06:52	2 HALL C free throw fast break 1 - 1 made (11)	<b>75-45</b>	<b>30</b>	
06:40	2 HALL C foul personal (2 - 3)			21 ADAMS A foul drawn (2)
06:30	5 CHAMBERS Y foul shooting (3 - 4)			24 DAVIS J foul drawn (5)
06:30	5 CHAMBERS Y substitution out			
06:30	44 BOWMAN E substitution in			
06:30				24 DAVIS J free throw 1 - 2 missed
06:30				offensive dead ball rebound (6)
06:30		<b>75-46</b>	<b>29</b>	24 DAVIS J free throw 2 - 2 made (5)
06:19	23 LOVE K 2pt FG in the paint, layup missed			
06:16				34 DOWDELL M defensive rebound (5)
06:09	23 LOVE K steal (4)			13 JACKSON S turnover bad pass (4)
06:06	15 ALEXANDER B turnover bad pass (3)			
05:52				34 DOWDELL M 2pt FG from turnover in the paint, jump shot blocked
05:52	23 LOVE K block (3)			
05:48	23 LOVE K defensive rebound (11)			
05:41	2 HALL C 3pt FG , jump shot made (14)	<b>78-46</b>	<b>32</b>	
05:41	1 PEHADZIC E assist (4)			
05:27	2 HALL C foul personal (3 - 5)			13 JACKSON S foul drawn (2)
05:27	1 PEHADZIC E substitution out			
05:27	22 BARTRAM B substitution in			
05:27				13 JACKSON S free throw 1 - 2 missed
05:27				offensive dead ball rebound (7)
05:27				13 JACKSON S free throw 2 - 2 missed
05:26				offensive rebound (41)
05:19				24 DAVIS J 3pt FG second chance, jump shot missed
05:15				34 DOWDELL M offensive rebound (6)
05:11		<b>78-48</b>	<b>30</b>	24 DAVIS J 2pt FG second chance outside the paint, jump shot made (7)
05:11				34 DOWDELL M assist (2)
05:12				Timeout 30 Sec
04:56	23 LOVE K 2pt FG in the paint, layup missed			
04:51				20 POST K defensive rebound (2)
04:45				13 JACKSON S 3pt FG , jump shot missed
04:41	23 LOVE K defensive rebound (12)			
04:37	23 LOVE K foul drawn (4)			13 JACKSON S foul shooting (2 - 3)
04:37	23 LOVE K free throw fast break 1 - 2 missed			
04:37	offensive dead ball rebound (2)			
04:37	23 LOVE K free throw fast break 2 - 2 missed			
04:37	22 BARTRAM B offensive rebound (1)			
04:26	15 ALEXANDER B 3pt FG second chance, jump shot missed			
04:23				34 DOWDELL M defensive rebound (7)
04:23	15 ALEXANDER B foul personal (4 - 6)			34 DOWDELL M foul drawn (3)
04:23	15 ALEXANDER B substitution out			
04:23	1 PEHADZIC E substitution in			
04:23				24 DAVIS J substitution out



**ETSU at Vanderbilt**

12/08/20 Memorial Gymnasium, Nashville  
2020-21 Women's Basketball

**Officials:** Dee Kantner, Cameron Inouye, Laura Morris

Game Time	Vandy	Score	Diff	ETSU
04:23				3 BROWN A substitution in
04:23				34 DOWDELL M free throw fast break 1 - 2 missed
04:23				offensive dead ball rebound (8)
04:23		<b>78-49</b>	<b>29</b>	34 DOWDELL M free throw fast break 2 - 2 made (7)
04:06	1 PEHADZIC E 3pt FG , jump shot missed			
04:01				20 POST K defensive rebound (3)
03:48		<b>78-51</b>	<b>27</b>	34 DOWDELL M 2pt FG in the paint, layup made (9)
03:48				3 BROWN A assist (1)
03:25	22 BARTRAM B 3pt FG , jump shot missed			
03:22	44 BOWMAN E offensive rebound (3)			
03:22	44 BOWMAN E foul drawn (2)			3 BROWN A foul shooting (1 - 4)
03:22	23 LOVE K substitution out			
03:22	5 CHAMBERS Y substitution in			
03:22				34 DOWDELL M substitution out
03:22				5 CARRINGTON A substitution in
03:22	44 BOWMAN E free throw 1 - 2 missed			
03:22	offensive dead ball rebound (3)			
03:22	44 BOWMAN E free throw 2 - 2 missed			
03:22	5 CHAMBERS Y offensive rebound (9)			
03:19	Timeout 30 Sec			
03:04	15 ALEXANDER B turnover lost ball (4)			5 CARRINGTON A steal (1)
02:57		<b>78-53</b>	<b>25</b>	5 CARRINGTON A 2pt FG fast break from turnover in the paint, layup made (2)
02:44	44 BOWMAN E substitution out			
02:44	15 ALEXANDER B substitution in			
02:40	2 HALL C 2pt FG outside the paint, jump shot made (16)	<b>80-53</b>	<b>27</b>	
02:40	1 PEHADZIC E assist (5)			
02:28		<b>80-55</b>	<b>25</b>	21 ADAMS A 2pt FG in the paint, jump shot made (6)
02:18	1 PEHADZIC E 3pt FG , jump shot missed			
02:15				13 JACKSON S defensive rebound (1)
02:04		<b>80-57</b>	<b>23</b>	3 BROWN A 2pt FG in the paint, layup made (2)
02:04	Timeout 60 Sec			
02:04	2 HALL C substitution out			
02:04	22 BARTRAM B substitution out			
02:04	0 LACHANCE B substitution in			
02:04	23 LOVE K substitution in			
02:04				21 ADAMS A substitution out
02:04				1 HOOKS C substitution in
01:49	15 ALEXANDER B 3pt FG , jump shot missed			
01:47				defensive rebound (47)
01:39				3 BROWN A turnover bad pass (1)
01:16	15 ALEXANDER B 2pt FG from turnover in the paint, jump shot missed			
01:13				1 HOOKS C defensive rebound (3)
01:08				1 HOOKS C 2pt FG in the paint, layup missed
01:06				3 BROWN A offensive rebound (1)
01:06	0 LACHANCE B foul personal (3 - 7)			5 CARRINGTON A foul drawn (1)
01:06				13 JACKSON S substitution out
01:06				2 WILLIAMS I substitution in
01:06		<b>80-58</b>	<b>22</b>	5 CARRINGTON A free throw 1 - 2 made (3)



**ETSU at Vanderbilt**

12/08/20 Memorial Gymnasium, Nashville  
2020-21 Women's Basketball

**Officials:** Dee Kantner, Cameron Inouye, Laura Morris

Game Time	Vandy	Score	Diff	ETSU
01:06		<b>80-59</b>	<b>21</b>	5 CARRINGTON A free throw 2 - 2 made (4)
00:56	0 LACHANCE B foul drawn (2)			3 BROWN A foul shooting (2 - 5)
00:56	5 CHAMBERS Y substitution out			
00:56	15 ALEXANDER B substitution out			
00:56	22 BARTRAM B substitution in			
00:56	44 BOWMAN E substitution in			
00:56	0 LACHANCE B free throw 1 - 2 missed			
00:56	offensive dead ball rebound (4)			
00:56	0 LACHANCE B free throw 2 - 2 made (1)	<b>81-59</b>	<b>22</b>	
00:43				20 POST K 3pt FG , jump shot missed
00:42				offensive rebound (50)
00:42	23 LOVE K substitution out			
00:42	5 CHAMBERS Y substitution in			
00:34	1 PEHADZIC E foul shooting (2 - 8)			2 WILLIAMS I foul drawn (2)
00:34		<b>81-60</b>	<b>21</b>	2 WILLIAMS I free throw 1 - 2 made (1)
00:34		<b>81-61</b>	<b>20</b>	2 WILLIAMS I free throw 2 - 2 made (2)
00:09	1 PEHADZIC E 3pt FG , jump shot missed			
00:04	offensive rebound (45)			
<b>END OF GAME</b>				
<b>Vandy 81-61 ETSU</b>				



**ETSU at Vanderbilt**

12/08/20 Memorial Gymnasium, Nashville  
2020-21 Women's Basketball

Officials: Dee Kantner, Cameron Inouye, Laura Morris

**ETSU - 23**

NO.	Name	Min	FG			Rebounds			Fouls		TP	AS	TO	ST	Blocks		+/-
			M-A	3P	FT	OR	DR	TOT	PF	FD					BS	BA	
34	Mykia Dowdell	F 06:38	2-3	1-1	1-2	1	2	3	0	1	6	1	0	0	0	1	1
44	E'Lease Stafford	F 01:45	0-0	0-0	0-0	0	1	1	1	0	0	0	1	0	0	0	
24	Jakhya Davis	C 05:37	1-2	0-1	1-2	0	0	0	0	1	3	1	0	0	0	0	-2
10	Courtney Moore	G 02:51	0-1	0-0	2-2	1	0	1	1	1	2	1	0	0	0	0	-1
14	Kaia Upton	G 00:00															
23	Jasmine Sanders	00:17	0-1	0-1	0-0	0	0	0	0	0	0	0	0	0	0	0	0
13	Shynia Jackson	07:09	0-2	0-2	0-2	0	1	1	1	2	0	0	1	0	0	0	3
21	Amaya Adams	06:11	2-2	0-0	0-0	0	0	0	0	1	4	0	0	0	0	0	5
20	Kelly Post	08:37	0-1	0-1	0-0	0	3	3	0	0	0	0	0	0	0	0	11
3	Ashawntae Brown	04:23	1-1	0-0	0-0	1	0	1	2	0	2	1	1	0	0	0	10
5	Abby Carrington	03:22	1-1	0-0	2-2	0	0	0	0	1	4	0	0	1	0	0	7
1	Carly Hooks	02:04	0-1	0-0	0-0	0	1	1	0	0	0	0	0	0	0	0	3
2	Imani Williams	01:06	0-0	0-0	2-2	0	0	0	0	1	2	0	0	0	0	0	3
Team						2	1	3			0		0				
<b>Totals</b>			7-15	1-6	8-12	5	9	14	5	8	23	4	3	1	0	1	8

Shooting By Period		
4 <sup>th</sup> FG%	7-15	46.7%
3PT%	1-6	16.7%
FT%	8-12	66.7%
GM FG%	7-15	46.7%
3PT%	1-6	16.7%
FT%	8-12	66.7%

Dead Ball Rebounds: 3, 0

Technical Fouls::NONE

**Vanderbilt - 15**

NO.	Name	Min	FG			Rebounds			Fouls		TP	AS	TO	ST	Blocks		+/-
			M-A	3P	FT	OR	DR	TOT	PF	FD					BS	BA	
5	Yaubryon Chambers	F 06:38	0-0	0-0	0-0	2	1	3	1	0	0	0	0	0	0	0	-6
15	Brinae Alexander	F 05:40	0-3	0-2	0-0	0	0	0	2	0	0	0	3	0	0	0	-2
23	Koi Love	F 07:17	0-2	0-0	0-2	0	2	2	0	1	0	0	0	1	1	0	2
1	Enna Pehadzic	G 08:56	2-7	2-7	0-0	0	0	0	1	0	6	2	0	0	0	0	-6
2	Chelsie Hall	G 05:28	3-3	1-1	1-1	0	0	0	2	1	8	1	0	0	0	0	-1
44	Emily Bowman	04:42	0-0	0-0	0-2	1	0	1	0	1	0	0	0	0	0	0	-6
22	Brylee Bartram	06:47	0-3	0-3	0-0	1	0	1	0	0	0	0	0	0	0	0	-14
0	Bella LaChance	04:32	0-0	0-0	1-2	1	1	2	2	2	1	0	0	0	0	0	-7
Team						1	0	1			0		0				
<b>Totals</b>			5-18	3-13	2-7	6	4	10	8	5	15	3	3	1	1	0	-8

Shooting By Period		
4 <sup>th</sup> FG%	5-18	27.8%
3PT%	3-13	23.1%
FT%	2-7	28.6%
GM FG%	5-18	27.8%
3PT%	3-13	23.1%
FT%	2-7	28.6%

Dead Ball Rebounds: 3, 0

Technical Fouls::NONE

	ETSU	Vandy
Biggest lead	0 (1 <sup>st</sup> 10:00)	32 (4 <sup>th</sup> 5:41)
Best Scoring Run	7(4 <sup>th</sup> 2:57)	6(4 <sup>th</sup> 6:52)
Lead Changes	0	
Times Tied	0	
Time with Lead	00:00	09:52

Points from	ETSU	Vandy
Turnovers	4	0
Paint	10	2
Second Chance	6	0
Fast Breaks	3	3
Bench	12	1

Period by Period Scoring					
	1st	2nd	3rd	4th	TOT
ETSU	17	14	7	23	61
Vandy	13	25	28	15	81



**ETSU at Vanderbilt**

12/08/20 Memorial Gymnasium, Nashville  
2020-21 Women's Basketball

Officials: Dee Kantner, Cameron Inouye, Laura Morris

**ETSU - 30**

NO.	Name	Min	FG			Rebounds			Fouls		TP	AS	TO	ST	Blocks		+/-
			M-A	M-A	M-A	OR	DR	TOT	PF	FD					BS	BA	
34	Mykia Dowdell	F 15:59	2-4	1-1	1-2	1	5	6	0	3	6	2	2	0	0	2	-19
44	E'Lease Stafford	F 08:50	0-2	0-1	2-2	0	3	3	2	1	2	0	2	0	0	0	-17
24	Jakhya Davis	C 14:58	1-6	0-1	1-6	2	1	3	0	3	3	1	1	0	1	1	-22
10	Courtney Moore	G 07:10	1-3	1-2	3-4	2	0	2	2	2	6	1	0	0	0	0	-5
14	Kaia Upton	G 07:43	0-2	0-1	0-0	0	1	1	1	0	0	0	0	0	0	0	-11
23	Jasmine Sanders	04:50	0-3	0-2	1-2	0	0	0	0	1	1	0	1	0	0	0	-11
1	Carly Hooks	03:53	0-2	0-1	0-0	0	1	1	0	0	0	0	1	0	0	0	-4
21	Amaya Adams	10:06	2-2	0-0	0-0	1	0	1	0	1	4	0	0	0	0	0	-6
2	Imani Williams	01:45	0-0	0-0	2-2	0	0	0	0	1	2	0	0	0	0	0	2
13	Shynia Jackson	07:48	0-2	0-2	0-2	0	1	1	1	2	0	0	1	0	0	0	2
20	Kelly Post	09:13	0-1	0-1	0-0	0	3	3	0	0	0	0	0	0	0	0	9
3	Ashawntae Brown	04:23	1-1	0-0	0-0	1	0	1	2	0	2	1	1	0	0	0	10
5	Abby Carrington	03:22	1-1	0-0	2-2	0	0	0	0	1	4	0	0	1	0	0	7
Team						2	1	3			0		0				
<b>Totals</b>			8-29	2-12	12-22	9	16	25	8	15	30	5	9	1	1	3	-13

Shooting By Period		
3 <sup>rd</sup> FG%	1-14	7.1%
3PT%	1-6	16.7%
FT%	4-10	40%
4 <sup>th</sup> FG%	7-15	46.7%
3PT%	1-6	16.7%
FT%	8-12	66.7%
GM FG%	8-29	27.6%
3PT%	2-12	16.7%
FT%	12-22	54.5%

Dead Ball Rebounds: 7, 0

Technical Fouls::NONE

**Vanderbilt - 43**

NO.	Name	Min	FG			Rebounds			Fouls		TP	AS	TO	ST	Blocks		+/-
			M-A	M-A	M-A	OR	DR	TOT	PF	FD					BS	BA	
5	Yaubryon Chambers	F 13:53	1-1	0-0	0-0	3	4	7	3	0	2	0	1	0	1	0	8
15	Brinae Alexander	F 14:32	1-8	1-5	1-2	0	2	2	3	1	4	1	3	0	0	1	15
23	Koi Love	F 17:17	2-5	0-0	0-2	1	5	6	1	1	4	0	0	3	2	0	23
1	Enna Pehadzic	G 17:26	5-12	2-7	0-0	0	2	2	1	0	12	3	1	0	0	0	12
2	Chelsie Hall	G 14:08	5-5	1-1	3-4	0	0	0	2	3	14	4	0	1	0	0	18
0	Bella LaChance	06:31	0-0	0-0	1-2	1	1	2	2	2	1	1	0	0	0	0	-5
44	Emily Bowman	05:39	0-1	0-0	0-2	2	0	2	2	1	0	0	1	0	0	0	-6
22	Brylee Bartram	10:34	2-6	2-6	0-0	1	0	1	1	0	6	0	1	1	0	0	0
Team						2	1	3			0		0				
<b>Totals</b>			16-38	6-19	5-12	10	15	25	15	8	43	9	7	5	3	1	13

Shooting By Period		
3 <sup>rd</sup> FG%	11-20	55.0%
3PT%	3-6	50.0%
FT%	3-5	60%
4 <sup>th</sup> FG%	5-18	27.8%
3PT%	3-13	23.1%
FT%	2-7	28.6%
GM FG%	16-38	42.1%
3PT%	6-19	31.6%
FT%	5-12	41.7%

Dead Ball Rebounds: 3, 0

Technical Fouls::NONE

	ETSU	Vandy
Biggest lead	0 (1 <sup>st</sup> 10:00)	32 (4 <sup>th</sup> 5:41)
Best Scoring Run	7(4 <sup>th</sup> 2:57)	8(3 <sup>rd</sup> 0:49)
Lead Changes	0	
Times Tied	0	
Time with Lead	00:00	19:47

Points from	ETSU	Vandy
Turnovers	4	6
Paint	10	18
Second Chance	6	2
Fast Breaks	5	12
Bench	13	7

Period by Period Scoring					
	1st	2nd	3rd	4th	TOT
ETSU	17	14	7	23	61
Vandy	13	25	28	15	81



**ETSU at Vanderbilt**

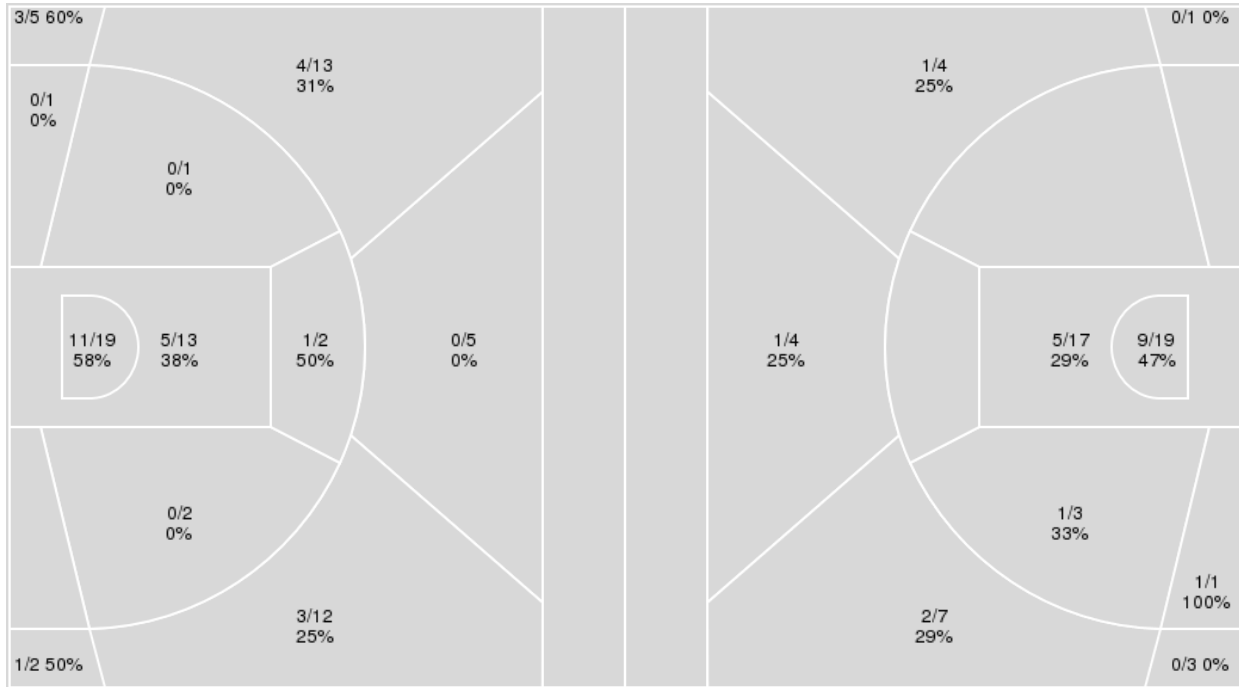
12/08/20 Memorial Gymnasium, Nashville  
2020-21 Women's Basketball

**Officials:** Dee Kantner, Cameron Inouye, Laura Morris

{ Players => 0, 1, 2, 3, 5, 12, 15, 22, 23, 24, 25, 33, 44, 50; } FG Types { Players => All; } FG Types => All; Results => All;  
=> All; Results => All;

**Vanderbilt**

**ETSU**



Vanderbilt	M/A	%
Field Goals	28/75	37
2 Points	17/38	45
3 Points	11/37	30
Free Throws	14/24	58

ETSU	M/A	%
Field Goals	20/59	34
2 Points	16/40	40
3 Points	4/19	21
Free Throws	17/28	61

**ETSU at Vanderbilt**12/08/20 Memorial Gymnasium, Nashville  
2020-21 Women's Basketball

Officials: Dee Kantner, Cameron Inouye, Laura Morris

**ETSU**

No	Name	Mins		Score		Points Diff		Points per Min		Assists		Rebounds		Steals		Turnovers	
		On	Off	On	Off	On	Off	On	Off	On	Off	On	Off	On	Off	On	Off
1	Carly Hooks	07:40	32:20	14 - 18	47 - 63	-4	-16	1.83	1.45	2	8	10	40	1	4	4	20
2	Imani Williams	07:07	32:53	22 - 13	39 - 68	9	-29	3.09	1.19	2	8	9	41	1	4	2	22
3	Ashawntae Brown	04:23	35:37	13 - 3	48 - 78	10	-30	2.97	1.35	1	9	6	44	1	4	1	23
5	Abby Carrington	04:30	35:30	10 - 8	51 - 73	2	-22	2.22	1.44	0	10	6	44	1	4	2	22
10	Courtney Moore	18:38	21:22	27 - 38	34 - 43	-11	-9	1.45	1.59	5	5	21	29	3	2	11	13
13	Shynia Jackson	19:03	20:57	38 - 40	23 - 41	-2	-18	1.99	1.10	7	3	23	27	3	2	10	14
14	Kaia Upton	23:56	16:04	28 - 46	33 - 35	-18	-2	1.17	2.05	4	6	29	21	3	2	17	7
20	Kelly Post	09:13	30:47	22 - 13	39 - 68	9	-29	2.39	1.27	3	7	14	36	1	4	4	20
21	Amaya Adams	18:24	21:36	27 - 37	34 - 44	-10	-10	1.47	1.57	5	5	25	25	3	2	10	14
23	Jasmine Sanders	14:50	25:10	25 - 38	36 - 43	-13	-7	1.69	1.43	5	5	13	37	1	4	8	16
24	Jakhyia Davis	29:26	10:34	35 - 64	26 - 17	-29	9	1.19	2.46	8	2	37	13	3	2	20	4
34	Mykia Dowdell	21:18	18:42	22 - 44	39 - 37	-22	2	1.03	2.09	6	4	27	23	1	4	13	11
44	E'Lease Stafford	21:32	18:28	22 - 43	39 - 38	-21	1	1.02	2.11	2	8	30	20	3	2	18	6

**Vanderbilt**

No	Name	Mins		Score		Points Diff		Points per Min		Assists		Rebounds		Steals		Turnovers	
		On	Off	On	Off	On	Off	On	Off	On	Off	On	Off	On	Off	On	Off
0	Bella LaChance	11:00	29:00	14 - 17	67 - 44	-3	23	1.27	2.31	2	12	9	36	2	9	3	11
1	Enna Pehadzic	35:23	04:37	76 - 55	5 - 6	21	-1	2.15	1.08	14	0	37	8	10	1	12	2
2	Chelsie Hall	30:38	09:22	67 - 45	14 - 16	22	-2	2.19	1.49	12	2	37	8	9	2	12	2
5	Yaubryon Chambers	25:58	14:02	52 - 38	29 - 23	14	6	2.00	2.07	7	7	31	14	9	2	8	6
15	Brinae Alexander	33:33	06:27	72 - 49	9 - 12	23	-3	2.15	1.40	13	1	39	6	10	1	13	1
22	Brylee Bartram	20:28	19:32	38 - 43	43 - 18	-5	25	1.86	2.20	7	7	26	19	5	6	7	7
23	Koi Love	34:12	05:48	76 - 44	5 - 17	32	-12	2.22	0.86	13	1	36	9	9	2	11	3
44	Emily Bowman	08:48	31:12	10 - 14	71 - 47	-4	24	1.14	2.28	2	12	10	35	1	10	4	10

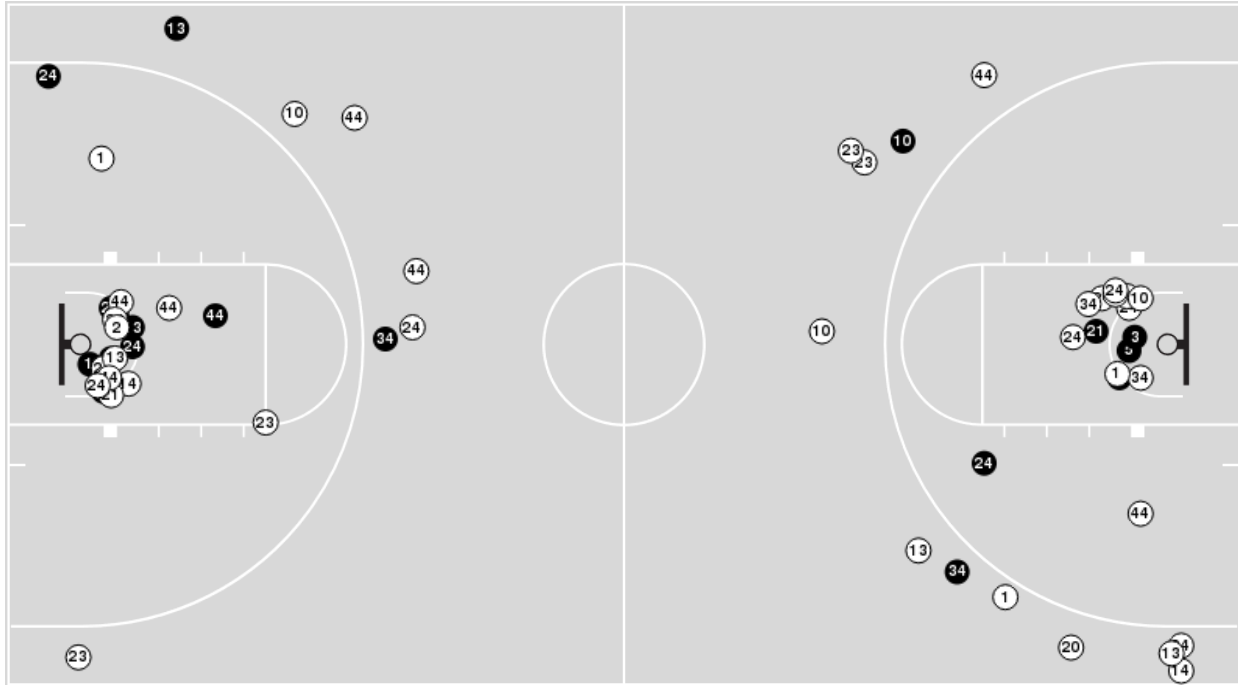




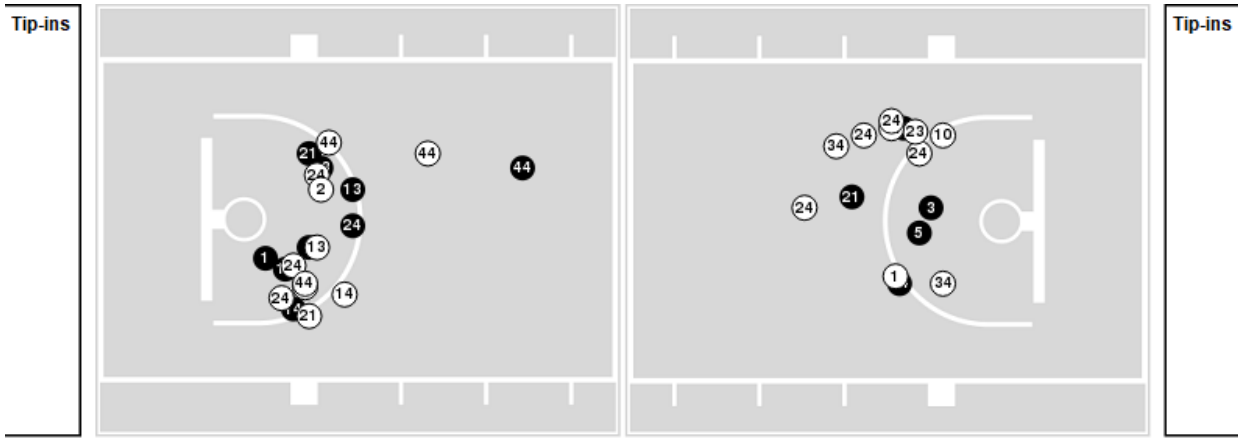
Officials: Dee Kantner, Cameron Inouye, Laura Morris

Players => AllFG Types=>AllResults=>All  
**ETSU**

**All Field Goals**



**Blow Up Chart**



● Made    ○ Missed    N - Player Number

ETSU	M/A	%
Field Goals	20/59	34
2 Points	16/40	40
3 Points	4/19	21
Free Throws	17/28	61

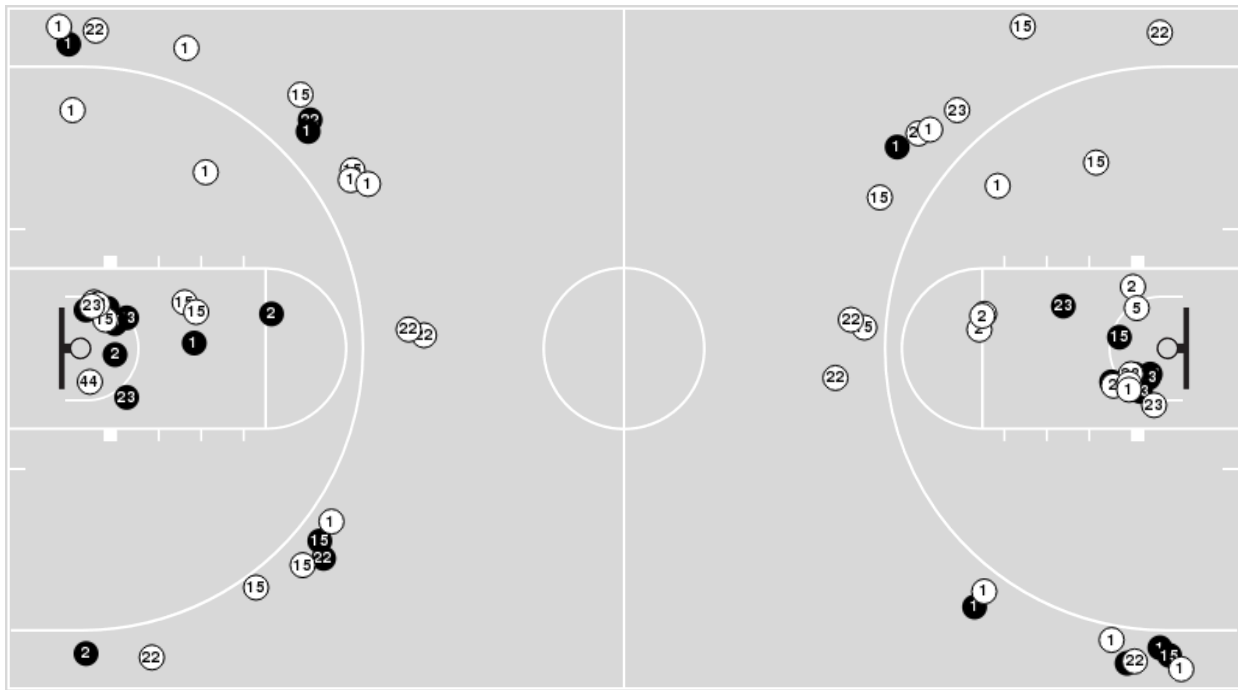
ETSU	M/A	%
Points in the Paint	28 (14 / 36)	39
Fast Break Points	9 (7/10)	70
Second Chance Points	15 (9/19)	47
Effective FG%	37	



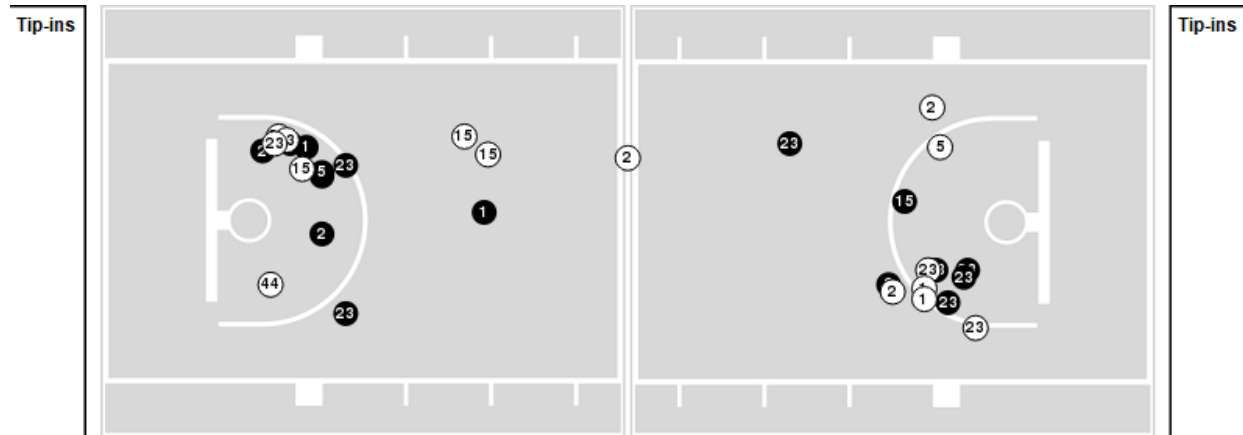
Players => 0, 1, 2, 3, 5, 12, 15, 22, 23, 24, 25, 33, 44, 50FG Types=>AllResults=>All

**Vanderbilt**

**All Field Goals**



**Blow Up Chart**



● Made    ○ Missed    N - Player Number

Vanderbilt	M/A	%
Field Goals	28/75	37
2 Points	17/38	45
3 Points	11/37	30
Free Throws	14/24	58

Vanderbilt	M/A	%
Points in the Paint	32 (16 / 32)	50
Fast Break Points	21 (12/16)	75
Second Chance Points	11 (7/20)	35
Effective FG%	45	



**ETSU at Vanderbilt**

12/08/20 Memorial Gymnasium, Nashville  
2020-21 Women's Basketball

Game Time: 7:00 PM  
Game Duration: 2:09

Officials: Dee Kantner, Cameron Inouye, Laura Morris

**ETSU**

Lineup	Quarter On	Time On	Quarter Off	Time Off	Time on Court	Score	Score Diff	Reb	Stl	Tov	Ass	PPP
10- Moore C/ 14- Upton K/ 24- Davis J/ 34- Dowdell M/ 44- Stafford E/	1	10:00	1	04:56	05:04	5-8	-3	7	1	5	1	0.5000
2- Williams I/ 14- Upton K/ 23- Sanders J/ 24- Davis J/ 44- Stafford E/	1	04:56	1	04:09	00:47	2-0	2	2	0	0	0	2.0000
2- Williams I/ 13- Jackson S/ 14- Upton K/ 23- Sanders J/ 44- Stafford E/	1	04:09	1	02:14	01:55	4-5	-1	2	0	2	0	1.0309
2- Williams I/ 13- Jackson S/ 14- Upton K/ 21- Adams A/ 23- Sanders J/	1	02:14	1	01:27	00:47	0-0	0	1	0	0	0	0.0000
1- Hooks C/ 2- Williams I/ 13- Jackson S/ 21- Adams A/ 23- Sanders J/	1	01:27	2	10:00	01:27	6-0	6	3	1	0	1	2.0000
1- Hooks C/ 5- Carrington A/ 13- Jackson S/ 21- Adams A/ 23- Sanders J/	2	10:00	2	08:52	01:08	0-5	-5	1	0	1	0	0.0000
1- Hooks C/ 13- Jackson S/ 21- Adams A/ 23- Sanders J/ 34- Dowdell M/	2	08:52	2	08:37	00:15	0-0	0	0	0	0	0	0.0000
1- Hooks C/ 13- Jackson S/ 21- Adams A/ 23- Sanders J/ 24- Davis J/	2	08:37	2	08:06	00:31	0-1	-1	2	0	1	0	0.0000
1- Hooks C/ 2- Williams I/ 13- Jackson S/ 23- Sanders J/ 24- Davis J/	2	08:06	2	07:40	00:26	3-3	0	0	0	0	1	3.0000
13- Jackson S/ 14- Upton K/ 21- Adams A/ 23- Sanders J/ 24- Davis J/	2	07:40	2	07:08	00:32	2-3	-1	0	0	0	1	2.0000
13- Jackson S/ 14- Upton K/ 21- Adams A/ 24- Davis J/ 44- Stafford E/	2	07:08	2	06:24	00:44	0-1	-1	1	0	2	0	0.0000
10- Moore C/ 13- Jackson S/ 14- Upton K/ 24- Davis J/ 44- Stafford E/	2	06:24	2	04:41	01:43	2-2	0	1	1	2	0	0.5000
10- Moore C/ 13- Jackson S/ 14- Upton K/ 23- Sanders J/ 24- Davis J/	2	04:41	2	02:54	01:47	4-5	-1	1	0	0	1	2.0000
10- Moore C/ 14- Upton K/ 21- Adams A/ 23- Sanders J/ 24- Davis J/	2	02:54	2	02:29	00:25	0-1	-1	0	0	1	0	0.0000
10- Moore C/ 14- Upton K/ 21- Adams A/ 24- Davis J/ 44- Stafford E/	2	02:29	3	10:00	02:29	3-4	-1	4	1	1	0	0.6303
10- Moore C/ 14- Upton K/ 24- Davis J/ 34- Dowdell M/ 44- Stafford E/	3	10:00	3	07:26	02:34	0-6	-6	5	0	1	0	0.0000
10- Moore C/ 14- Upton K/ 23- Sanders J/ 24- Davis J/ 34- Dowdell M/	3	07:26	3	06:20	01:06	3-0	3	0	0	0	1	1.5000
1- Hooks C/ 14- Upton K/ 23- Sanders J/ 24- Davis J/ 34- Dowdell M/	3	06:20	3	05:10	01:10	0-4	-4	0	0	1	0	0.0000
14- Upton K/ 21- Adams A/ 24- Davis J/ 34- Dowdell M/ 44- Stafford E/	3	05:10	3	02:56	02:14	0-3	-3	5	0	2	0	0.0000
2- Williams I/ 10- Moore C/ 13- Jackson S/ 14- Upton K/ 44- Stafford E/	3	02:56	3	02:56	00:00	2-0	2	0	0	0	0	2.2727
1- Hooks C/ 2- Williams I/ 10- Moore C/ 13- Jackson S/ 14- Upton K/	3	02:56	3	02:17	00:39	1-4	-3	0	0	0	0	1.1364
21- Adams A/ 23- Sanders J/ 24- Davis J/ 34- Dowdell M/ 44- Stafford E/	3	02:17	3	00:35	01:41	0-8	-8	0	0	1	0	0.0000
20- Post K/ 23- Sanders J/ 24- Davis J/ 34- Dowdell M/ 44- Stafford E/	3	00:35	4	09:43	00:53	1-3	-2	1	0	1	0	0.3472
10- Moore C/ 20- Post K/ 24- Davis J/ 34- Dowdell M/ 44- Stafford E/	4	09:43	4	08:15	01:28	3-3	0	2	0	1	1	1.5000
10- Moore C/ 20- Post K/ 21- Adams A/ 24- Davis J/ 34- Dowdell M/	4	08:15	4	08:15	00:00	2-0	2	0	0	0	0	2.2727
10- Moore C/ 13- Jackson S/ 21- Adams A/ 24- Davis J/ 34- Dowdell M/	4	08:15	4	06:52	01:23	2-5	-3	1	0	0	1	1.0000
13- Jackson S/ 20- Post K/ 21- Adams A/ 24- Davis J/ 34- Dowdell M/	4	06:52	4	04:23	02:29	3-4	-1	5	0	1	1	0.6303
3- Brown A/ 13- Jackson S/ 20- Post K/ 21- Adams A/ 34- Dowdell M/	4	04:23	4	03:22	01:01	3-0	3	1	0	0	1	1.5957
3- Brown A/ 5- Carrington A/ 13- Jackson S/ 20- Post K/ 21- Adams A/	4	03:22	4	02:04	01:18	6-2	4	1	1	0	0	2.0000
1- Hooks C/ 3- Brown A/ 5- Carrington A/ 13- Jackson S/ 20- Post K/	4	02:04	4	01:06	00:58	0-0	0	3	0	1	0	0.0000
1- Hooks C/ 2- Williams I/ 3- Brown A/ 5- Carrington A/ 20- Post K/	4	01:06	4	00:00	01:06	4-1	3	1	0	0	0	2.2727



**ETSU at Vanderbilt**

12/08/20 Memorial Gymnasium, Nashville  
2020-21 Women's Basketball

Officials: Dee Kantner, Cameron Inouye, Laura Morris

**Vanderbilt**

Lineup	Quarter On	Time On	Quarter Off	Time Off	Time on Court	Score	Score Diff	Reb	Stl	Tov	Ass	PPP
1- Pehadzic E/ 2- Hall C/ 5- Chambers Y/ 15- Alexander B/ 23- Love K/	1	10:00	1	05:57	04:03	6-5	1	4	1	2	0	0.6757
0- LaChance B/ 1- Pehadzic E/ 5- Chambers Y/ 15- Alexander B/ 23- Love K/	1	05:57	1	04:09	01:48	2-2	0	1	1	1	0	1.0000
0- LaChance B/ 1- Pehadzic E/ 15- Alexander B/ 23- Love K/ 44- Bowman E/	1	04:09	1	03:30	00:39	3-0	3	0	0	0	1	3.0000
0- LaChance B/ 15- Alexander B/ 22- Bartram B/ 23- Love K/ 44- Bowman E/	1	03:30	1	02:27	01:03	2-2	0	1	0	0	0	0.6944
2- Hall C/ 15- Alexander B/ 22- Bartram B/ 23- Love K/ 44- Bowman E/	1	02:27	1	01:27	01:00	0-2	-2	1	0	1	0	0.0000
1- Pehadzic E/ 2- Hall C/ 15- Alexander B/ 22- Bartram B/ 23- Love K/	1	01:27	1	00:30	00:57	0-4	-4	0	0	1	0	0.0000
1- Pehadzic E/ 2- Hall C/ 5- Chambers Y/ 15- Alexander B/ 22- Bartram B/	1	00:30	2	10:00	00:30	0-2	-2	0	0	0	0	0.0000
1- Pehadzic E/ 2- Hall C/ 5- Chambers Y/ 15- Alexander B/ 23- Love K/	2	10:00	2	06:51	03:09	12-5	7	3	2	0	2	2.0408
1- Pehadzic E/ 2- Hall C/ 15- Alexander B/ 23- Love K/ 44- Bowman E/	2	06:51	2	06:24	00:27	1-0	1	0	0	0	0	0.5319
1- Pehadzic E/ 2- Hall C/ 15- Alexander B/ 22- Bartram B/ 23- Love K/	2	06:24	2	02:54	03:30	7-6	1	4	0	1	2	1.1667
1- Pehadzic E/ 2- Hall C/ 5- Chambers Y/ 15- Alexander B/ 22- Bartram B/	2	02:54	2	01:51	01:03	3-2	1	4	2	0	0	1.7045
0- LaChance B/ 1- Pehadzic E/ 2- Hall C/ 5- Chambers Y/ 22- Bartram B/	2	01:51	2	00:51	00:59	0-1	-1	0	0	0	0	0.0000
1- Pehadzic E/ 2- Hall C/ 5- Chambers Y/ 15- Alexander B/ 22- Bartram B/	2	00:51	2	00:18	00:33	0-0	0	2	0	1	0	0.0000
1- Pehadzic E/ 2- Hall C/ 15- Alexander B/ 22- Bartram B/ 23- Love K/	2	00:18	3	10:00	00:19	2-0	2	0	0	0	0	2.0000
1- Pehadzic E/ 2- Hall C/ 5- Chambers Y/ 15- Alexander B/ 23- Love K/	3	10:00	3	05:10	04:50	10-3	7	6	1	2	2	1.1261
1- Pehadzic E/ 2- Hall C/ 15- Alexander B/ 23- Love K/ 44- Bowman E/	3	05:10	3	05:10	00:00	0-0	0	0	0	0	0	0.0000
0- LaChance B/ 1- Pehadzic E/ 15- Alexander B/ 23- Love K/ 44- Bowman E/	3	05:10	3	04:26	00:44	0-0	0	2	0	0	0	0.0000
0- LaChance B/ 2- Hall C/ 15- Alexander B/ 23- Love K/ 44- Bowman E/	3	04:26	3	04:13	00:13	0-0	0	0	0	1	0	0.0000
0- LaChance B/ 2- Hall C/ 5- Chambers Y/ 15- Alexander B/ 23- Love K/	3	04:13	3	03:47	00:26	0-0	0	1	0	0	0	0.0000
2- Hall C/ 5- Chambers Y/ 15- Alexander B/ 22- Bartram B/ 23- Love K/	3	03:47	3	02:56	00:51	3-0	3	3	1	0	0	0.7732
1- Pehadzic E/ 2- Hall C/ 15- Alexander B/ 22- Bartram B/ 23- Love K/	3	02:56	3	01:08	01:48	10-3	7	2	1	1	3	2.2523
1- Pehadzic E/ 2- Hall C/ 5- Chambers Y/ 22- Bartram B/ 23- Love K/	3	01:08	3	00:35	00:32	2-0	2	1	0	0	0	2.0000
0- LaChance B/ 1- Pehadzic E/ 5- Chambers Y/ 22- Bartram B/ 23- Love K/	3	00:35	4	08:15	02:21	6-4	2	2	1	0	1	1.2000
0- LaChance B/ 1- Pehadzic E/ 5- Chambers Y/ 15- Alexander B/ 22- Bartram B/	4	08:15	4	07:32	00:43	0-4	-4	1	0	1	0	0.0000
1- Pehadzic E/ 2- Hall C/ 5- Chambers Y/ 15- Alexander B/ 23- Love K/	4	07:32	4	06:30	01:02	6-0	6	1	0	0	1	2.4590
1- Pehadzic E/ 2- Hall C/ 15- Alexander B/ 23- Love K/ 44- Bowman E/	4	06:30	4	05:27	01:03	3-1	2	1	1	1	1	1.0000
2- Hall C/ 15- Alexander B/ 22- Bartram B/ 23- Love K/ 44- Bowman E/	4	05:27	4	04:23	01:04	0-2	-2	2	0	0	0	0.0000
1- Pehadzic E/ 2- Hall C/ 22- Bartram B/ 23- Love K/ 44- Bowman E/	4	04:23	4	03:22	01:01	0-3	-3	1	0	0	0	0.0000
1- Pehadzic E/ 2- Hall C/ 5- Chambers Y/ 22- Bartram B/ 44- Bowman E/	4	03:22	4	02:44	00:38	0-2	-2	1	0	1	0	0.0000
1- Pehadzic E/ 2- Hall C/ 5- Chambers Y/ 15- Alexander B/ 22- Bartram B/	4	02:44	4	02:04	00:40	2-4	-2	0	0	0	1	1.0000
0- LaChance B/ 1- Pehadzic E/ 5- Chambers Y/ 15- Alexander B/ 23- Love K/	4	02:04	4	00:56	01:08	0-2	-2	0	0	0	0	0.0000
0- LaChance B/ 1- Pehadzic E/ 22- Bartram B/ 23- Love K/ 44- Bowman E/	4	00:56	4	00:42	00:14	1-0	1	0	0	0	0	1.1364
0- LaChance B/ 1- Pehadzic E/ 5- Chambers Y/ 22- Bartram B/ 44- Bowman E/	4	00:42	4	00:00	00:42	0-2	-2	1	0	0	0	0.0000



**ETSU at Vanderbilt**

12/08/20 Memorial Gymnasium, Nashville  
2020-21 Women's Basketball

Officials: Dee Kantner, Cameron Inouye, Laura Morris

**ETSU**

Lineup	Time	Score	Score Diff	Pts/Min	Reb	Stl	Tov	Ass	PPP
10- Moore C/ 14- Upton K/ 24- Davis J/ 34- Dowdell M/ 44- Stafford E/	07:38	5-14	-9	0.6550	12	1	6	1	0.3571
10- Moore C/ 14- Upton K/ 21- Adams A/ 24- Davis J/ 44- Stafford E/	02:29	3-4	-1	1.2081	4	1	1	0	0.6303
13- Jackson S/ 20- Post K/ 21- Adams A/ 24- Davis J/ 34- Dowdell M/	02:29	3-4	-1	1.2081	5	0	1	1	0.6303
14- Upton K/ 21- Adams A/ 24- Davis J/ 34- Dowdell M/ 44- Stafford E/	02:14	0-3	-3	0.0000	5	0	2	0	0.0000
2- Williams I/ 13- Jackson S/ 14- Upton K/ 23- Sanders J/ 44- Stafford E/	01:55	4-5	-1	2.0870	2	0	2	0	1.0309
10- Moore C/ 13- Jackson S/ 14- Upton K/ 23- Sanders J/ 24- Davis J/	01:47	4-5	-1	2.2430	1	0	0	1	2.0000
10- Moore C/ 13- Jackson S/ 14- Upton K/ 24- Davis J/ 44- Stafford E/	01:43	2-2	0	1.1650	1	1	2	0	0.5000
21- Adams A/ 23- Sanders J/ 24- Davis J/ 34- Dowdell M/ 44- Stafford E/	01:41	0-8	-8	0.0000	0	0	1	0	0.0000
10- Moore C/ 20- Post K/ 24- Davis J/ 34- Dowdell M/ 44- Stafford E/	01:28	3-3	0	2.0455	2	0	1	1	1.5000
1- Hooks C/ 2- Williams I/ 13- Jackson S/ 21- Adams A/ 23- Sanders J/	01:27	6-0	6	4.1379	3	1	0	1	2.0000
10- Moore C/ 13- Jackson S/ 21- Adams A/ 24- Davis J/ 34- Dowdell M/	01:23	2-5	-3	1.4458	1	0	0	1	1.0000
3- Brown A/ 5- Carrington A/ 13- Jackson S/ 20- Post K/ 21- Adams A/	01:18	6-2	4	4.6154	1	1	0	0	2.0000
1- Hooks C/ 14- Upton K/ 23- Sanders J/ 24- Davis J/ 34- Dowdell M/	01:10	0-4	-4	0.0000	0	0	1	0	0.0000
1- Hooks C/ 5- Carrington A/ 13- Jackson S/ 21- Adams A/ 23- Sanders J/	01:08	0-5	-5	0.0000	1	0	1	0	0.0000
10- Moore C/ 14- Upton K/ 23- Sanders J/ 24- Davis J/ 34- Dowdell M/	01:06	3-0	3	2.7273	0	0	0	1	1.5000
1- Hooks C/ 2- Williams I/ 3- Brown A/ 5- Carrington A/ 20- Post K/	01:06	4-1	3	3.6364	1	0	0	0	2.2727
3- Brown A/ 13- Jackson S/ 20- Post K/ 21- Adams A/ 34- Dowdell M/	01:01	3-0	3	2.9508	1	0	0	1	1.5957
1- Hooks C/ 3- Brown A/ 5- Carrington A/ 13- Jackson S/ 20- Post K/	00:58	0-0	0	0.0000	3	0	1	0	0.0000
20- Post K/ 23- Sanders J/ 24- Davis J/ 34- Dowdell M/ 44- Stafford E/	00:53	1-3	-2	1.1321	1	0	1	0	0.3472
2- Williams I/ 14- Upton K/ 23- Sanders J/ 24- Davis J/ 44- Stafford E/	00:47	2-0	2	2.5532	2	0	0	0	2.0000
2- Williams I/ 13- Jackson S/ 14- Upton K/ 21- Adams A/ 23- Sanders J/	00:47	0-0	0	0.0000	1	0	0	0	0.0000
13- Jackson S/ 14- Upton K/ 21- Adams A/ 24- Davis J/ 44- Stafford E/	00:44	0-1	-1	0.0000	1	0	2	0	0.0000
1- Hooks C/ 2- Williams I/ 10- Moore C/ 13- Jackson S/ 14- Upton K/	00:39	1-4	-3	1.5385	0	0	0	0	1.1364
13- Jackson S/ 14- Upton K/ 21- Adams A/ 23- Sanders J/ 24- Davis J/	00:32	2-3	-1	3.7500	0	0	0	1	2.0000
1- Hooks C/ 13- Jackson S/ 21- Adams A/ 23- Sanders J/ 24- Davis J/	00:31	0-1	-1	0.0000	2	0	1	0	0.0000
1- Hooks C/ 2- Williams I/ 13- Jackson S/ 23- Sanders J/ 24- Davis J/	00:26	3-3	0	6.9231	0	0	0	1	3.0000
10- Moore C/ 14- Upton K/ 21- Adams A/ 23- Sanders J/ 24- Davis J/	00:25	0-1	-1	0.0000	0	0	1	0	0.0000
1- Hooks C/ 13- Jackson S/ 21- Adams A/ 23- Sanders J/ 34- Dowdell M/	00:15	0-0	0	0.0000	0	0	0	0	0.0000
2- Williams I/ 10- Moore C/ 13- Jackson S/ 14- Upton K/ 44- Stafford E/	00:00	2-0	2	∞	0	0	0	0	2.2727
10- Moore C/ 20- Post K/ 21- Adams A/ 24- Davis J/ 34- Dowdell M/	00:00	2-0	2	∞	0	0	0	0	2.2727



**ETSU at Vanderbilt**

12/08/20 Memorial Gymnasium, Nashville  
2020-21 Women's Basketball

Officials: Dee Kantner, Cameron Inouye, Laura Morris

**Vanderbilt**

Lineup	Time	Score	Score Diff	Pts/Min	Reb	Stl	Tov	Ass	PPP
1- Pehadzic E/ 2- Hall C/ 5- Chambers Y/ 15- Alexander B/ 23- Love K/	13:04	34-13	21	2.6020	14	4	4	5	1.3037
1- Pehadzic E/ 2- Hall C/ 15- Alexander B/ 22- Bartram B/ 23- Love K/	06:34	19-13	6	2.8934	6	1	3	5	1.4137
0- LaChance B/ 1- Pehadzic E/ 5- Chambers Y/ 15- Alexander B/ 23- Love K/	02:56	2-4	-2	0.6818	1	1	1	0	0.5000
1- Pehadzic E/ 2- Hall C/ 5- Chambers Y/ 15- Alexander B/ 22- Bartram B/	02:46	5-8	-3	1.8072	6	2	1	1	0.8681
0- LaChance B/ 1- Pehadzic E/ 5- Chambers Y/ 22- Bartram B/ 23- Love K/	02:21	6-4	2	2.5532	2	1	0	1	1.2000
2- Hall C/ 15- Alexander B/ 22- Bartram B/ 23- Love K/ 44- Bowman E/	02:04	0-4	-4	0.0000	3	0	1	0	0.0000
1- Pehadzic E/ 2- Hall C/ 15- Alexander B/ 23- Love K/ 44- Bowman E/	01:30	4-1	3	2.6667	1	1	1	1	0.8197
0- LaChance B/ 1- Pehadzic E/ 15- Alexander B/ 23- Love K/ 44- Bowman E/	01:23	3-0	3	2.1687	2	0	0	1	1.5000
0- LaChance B/ 15- Alexander B/ 22- Bartram B/ 23- Love K/ 44- Bowman E/	01:03	2-2	0	1.9048	1	0	0	0	0.6944
1- Pehadzic E/ 2- Hall C/ 22- Bartram B/ 23- Love K/ 44- Bowman E/	01:01	0-3	-3	0.0000	1	0	0	0	0.0000
0- LaChance B/ 1- Pehadzic E/ 2- Hall C/ 5- Chambers Y/ 22- Bartram B/	00:59	0-1	-1	0.0000	0	0	0	0	0.0000
2- Hall C/ 5- Chambers Y/ 15- Alexander B/ 22- Bartram B/ 23- Love K/	00:51	3-0	3	3.5294	3	1	0	0	0.7732
0- LaChance B/ 1- Pehadzic E/ 5- Chambers Y/ 15- Alexander B/ 22- Bartram B/	00:43	0-4	-4	0.0000	1	0	1	0	0.0000
0- LaChance B/ 1- Pehadzic E/ 5- Chambers Y/ 22- Bartram B/ 44- Bowman E/	00:42	0-2	-2	0.0000	1	0	0	0	0.0000
1- Pehadzic E/ 2- Hall C/ 5- Chambers Y/ 22- Bartram B/ 44- Bowman E/	00:38	0-2	-2	0.0000	1	0	1	0	0.0000
1- Pehadzic E/ 2- Hall C/ 5- Chambers Y/ 22- Bartram B/ 23- Love K/	00:32	2-0	2	3.7500	1	0	0	0	2.0000
0- LaChance B/ 2- Hall C/ 5- Chambers Y/ 15- Alexander B/ 23- Love K/	00:26	0-0	0	0.0000	1	0	0	0	0.0000
0- LaChance B/ 1- Pehadzic E/ 22- Bartram B/ 23- Love K/ 44- Bowman E/	00:14	1-0	1	4.2857	0	0	0	0	1.1364
0- LaChance B/ 2- Hall C/ 15- Alexander B/ 23- Love K/ 44- Bowman E/	00:13	0-0	0	0.0000	0	0	1	0	0.0000