

# CONCUSSION

## A FACT SHEET FOR STUDENT-ATHLETES

### WHAT IS A CONCUSSION?

A concussion is a brain injury that:

- Is caused by a blow to the head or body.
  - From contact with another player, hitting a hard surface such as the ground, ice or floor, or being hit by a piece of equipment such as a bat, lacrosse stick or field hockey ball.
- Can change the way your brain normally works.
- Can range from mild to severe.
- Presents itself differently for each athlete.
- Can occur during practice or competition in ANY sport.
- **Can happen even if you do not lose consciousness.**

### HOW CAN I PREVENT A CONCUSSION?

Basic steps you can take to protect yourself from concussion:

- Do not initiate contact with your head or helmet. You can still get a concussion if you are wearing a helmet.
- Avoid striking an opponent in the head. Undercutting, flying elbows, stepping on a head, checking an unprotected opponent, and sticks to the head all cause concussions.
- Follow your athletics department's rules for safety and the rules of the sport.
- Practice good sportsmanship at all times.
- Practice and perfect the skills of the sport.

### WHAT ARE THE SYMPTOMS OF A CONCUSSION?

You can't see a concussion, but you might notice some of the symptoms right away. Other symptoms can show up hours or days after the injury. Concussion symptoms include:

- Amnesia.
- Confusion.
- Headache.
- Loss of consciousness.
- Balance problems or dizziness.
- Double or fuzzy vision.
- Sensitivity to light or noise.
- Nausea (feeling that you might vomit).
- Feeling sluggish, foggy or groggy.
- Feeling unusually irritable.
- Concentration or memory problems (forgetting game plays, facts, meeting times).
- Slowed reaction time.

Exercise or activities that involve a lot of concentration, such as studying, working on the computer, or playing video games may cause concussion symptoms (such as headache or tiredness) to reappear or get worse.

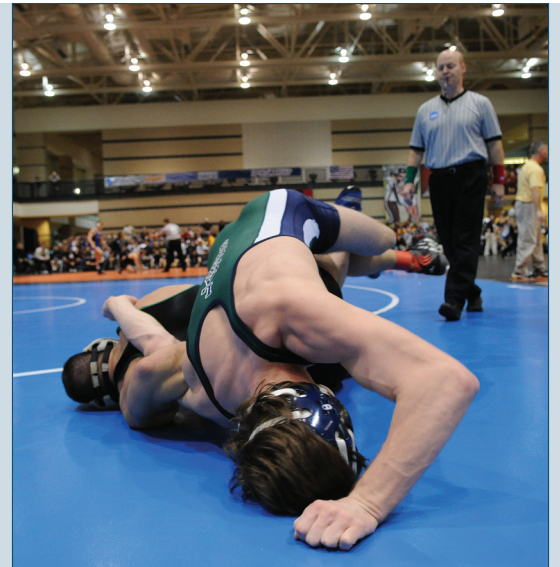
### WHAT SHOULD I DO IF I THINK I HAVE A CONCUSSION?

**Don't hide it.** Tell your athletic trainer and coach. Never ignore a blow to the head. Also, tell your athletic trainer and coach if one of your teammates might have a concussion. Sports have injury timeouts and player substitutions so that you can get checked out.

**Report it.** Do not return to participation in a game, practice or other activity with symptoms. The sooner you get checked out, the sooner you may be able to return to play.

**Get checked out.** Your team physician, athletic trainer, or health care professional can tell you if you have had a concussion and when you are cleared to return to play. A concussion can affect your ability to perform everyday activities, your reaction time, balance, sleep and classroom performance.

**Take time to recover.** If you have had a concussion, your brain needs time to heal. While your brain is still healing, you are much more likely to have a repeat concussion. In rare cases, repeat concussions can cause permanent brain damage, and even death. Severe brain injury can change your whole life.



**IT'S BETTER TO MISS ONE GAME THAN THE WHOLE SEASON.  
WHEN IN DOUBT, GET CHECKED OUT.**

For more information and resources, visit [www.NCAA.org/health-safety](http://www.NCAA.org/health-safety) and [www.CDC.gov/Concussion](http://www.CDC.gov/Concussion).



*Reference to any commercial entity or product or service on this page should not be construed as an endorsement by the Government of the company or its products or services.*