



Bemidji State Baseball

Week 11: NSIC Tournament

May 8-11

This Week

NSIC Tournament

May 8-11

St. Cloud, Minn.

Faber Field

Dick Putz Field

All Games 9 innings

Double Elimination

Last 6 Games

May 1 SW Minnesota State * W, 10-3

May 1 SW Minnesota State * L, 6-1

May 3 (12) St. Cloud State * W, 4-1

May 3 (12) St. Cloud State * L, 8-1

May 5 (12) St. Cloud State * L, 5-4

May 5 (12) St. Cloud State * L, 6-3

BOLD - Home

* NSIC Contest

Multimedia

Live stats at Faber: <http://www.sidearmstats.com/stcloudstate/baseball/scoreboard.aspx>

Live stats at Putz: <http://www.sidearmstats.com/stcloudstate/softball/scoreboard.aspx>

Watch all Tournament Games

Live: <http://client.stretchinternet.com/client/bsu.portal>

Athletic Media Relations

Dax Larson

Asst. Director/Baseball Contact

dlarson@bemidjistate.edu

Cell: (612) 718-0729

Beavers enter NSIC Tournament as No. 8 seed

This Week: The Bemidji State University baseball earned the No. 8 seed in the Northern Sun Intercollegiate Conference Tournament by finishing with a 13-13 league record. The Beavers begin the tournament with a first round contest against No. 1 seed and host St. Cloud State University May 8 at 11 a.m. at Faber Field in St. Cloud, Minn.

If Bemidji State wins game one, it will play the winner of the Winona State University/Concordia University, St. Paul game Thursday at 2 p.m. The losers of those games do battle at 7 p.m. Wednesday. Win or lose, the next game will be played on Faber Field.

The double elimination tournament will be held on both Dick Putz Field and Faber Field in St. Cloud and runs May 8-11. All tournament games are scheduled to be nine innings. SCSU was the predetermined host of the tournament. The winner of the NSIC Tournament earns an automatic bid to the NCAA Central Region Tournament.

About Bemidji State: Bemidji State is playing in the Northern Sun Intercollegiate Conference Tournament for the first time since 2008. With a 13-13 NSIC record, the Beavers tied with University of Sioux Falls (14-14) for the eighth spot in the league standings, but BSU was awarded the tie breaker to earn the No. 8 seed in the league's postseason event. BSU finished 22-20 overall to become the seventh team to reach 20 wins in the 62-year history of the program. Bemidji State has posted back-to-back 20-win seasons for just the second time in program history. The Beavers finished above .500 for the first time since 2002 and for just the 11th time in program lore.

Postseason History: The Beavers last made the NSIC Tournament in 2008 and have continued to postseason play just four times before that: 2002, 1997, 1998 and 1996 (inaugural tournament). BSU is 4-9 all-time in NSIC Tournament Games and in 2008 won its opening contest 5-2 before falling 8-2 in its second and final game - the tournament was shortened due to rain.

20 Victories: The big 21-1 victory April 29 handed the Beavers their 20th win of the season to mark the seventh time a Beaver team has reached the victory plateau and the second time in program history teams produced back-to-back 20-win seasons. BSU went 21-25 overall in 2012 to rank fifth in all-time wins. The school record for wins in a season is 27, by the 1993 (27-19-1) team.

Bemidji State 20-Win Seasons

1982 23-20 (14-6 NIC)

1988 25-20 (12-8 NIC)

1992 20-17 (4-10 NIC)

1993 27-19-1 (6-8 NSIC)

1997 22-22 (14-4 NSIC)

2012 23-27 (16-20 NSIC)

2013 22-20 (13-13 NSIC)

NSIC Doles Out Yearly Awards: Bemidji State head coach **Tim Bellew** was named *NSIC Coach of the Year* Tuesday to become just the second BSU skipper to earn the award (Jim Grimm 2002 and 1997). In 2013, the Beavers finished first in the NSIC in batting average (.330), second in fielding percentage (.970) and fifth in team ERA (4.15).



BEMIDJI STATE BASEBALL

Notes / Tim Bellew vs...

Senior shortstop **Lewis Baumann** earned his first career all-conference honor at shortstop after he finished the regular season third in the league in batting average with a .397 mark after sitting above .400 for most the season.

Senior **Logan Kalis** (DH) was named as the first team designated hitter for the second consecutive season after he went .364 at the plate to finish 16th in the NSIC.

Junior catcher **Zach Braun**, a 2012 All-NSIC First Team catcher, was named to the second team after his 15 doubles finished tied for fourth in the league.

Senior outfielder **Trevor Purvis** was awarded his first all-conference honor in his second season with Bemidji State. The outfielder posted a .375 batting average to finish 13th in the NSIC.

Sophomore infielder **Jack Hegarty**, in his first season as a Beaver after transferring from Centry College, earned a spot on the Gold Glove Team. He played in 28 games with 27 starts at both second base and shortstop.

The four all-conference team members marks the first time since 2004, BSU had more than three student-athletes named to the all-conference team. With the additions of Bellew and Hegarty, it is the most awards Bemidji State has racked-up since 1997.

LAST TIME VERSUS THE OPPONENTS

No. 1 St. Cloud State: The Beavers just saw the Huskies as the two teams met in the regular season finale. BSU won game one of the series May 4 behind the arm of lefty **Phil Bray**, who allowed just one run on four hits to lift the Beavers to the 4-1 victory. BSU went on to lose the rest of the series by the scores of 8-1, 5-4 and 6-3. Head coach **Tim Bellew** is 5-15-1 versus St. Cloud State.

No. 2 Minnesota State: BSU only saw Minnesota State in nonconference play this season, as its mid-week with the Mavericks was canceled. The Beavers defeated then-No. 18 Minnesota State 2-1 in an 11-inning thriller in game one. A committee of pitchers, in **Miles Campbell**, **Ryan Brezinski** and **Logan Kalis** allowed just one run on seven hits. BSU lost game two 1-0. Bellew is 6-15 against the Mavericks.

No. 3 Augustana: BSU didn't see Augustana this season, as the mid-week with the Vikings was canceled. In 2012, the Beavers hosted Augie in a four-game series. After losing the first game 7-2, BSU split the first day with a 7-5 victory. The Vikings came back the next day and won 10-6 and 12-1. Bellew is 4-11 against the Vikings.

The Beavers Under Tim Bellew

	W/L	Home	Away	Neutral
Arkansas Tech	0-2	-	0-1	0-1
Arizona Christian Univ.	1-0	-	-	1-0
Augustana	4-11	1-5	1-6	2-0
Benedictine Springfield	1-0	-	-	1-0
Central Missouri State	1-1	-	1-1	-
Colorado Christian	1-1	-	-	1-1
Concordia University	9-20	2-8	4-6	3-6
Drury University	0-1	0-1	-	-
Emporia State	0-8	-	0-7	0-1
Fort Hays State	0-3	-	0-3	-
Harding University	1-0	-	1-0	-
Indiana Wesleyan	1-0	-	-	1-0
Jamestown	1-5	0-2	0-3	1-0
Macalester	1-0	-	-	1-0
Madonna	0-1	-	-	0-1
Malone University (Ohio)	2-2	-	-	2-2
Mary	9-12	5-4	4-8	-
Minnesota Crookston	16-1	5-0	4-0	7-1
Minnesota Duluth	9-18	5-7	2-9	2-2
Minnesota State	6-15	0-4	0-4	6-7
Minot State	8-0	-	-	8-0
Missouri Western	1-0	-	-	1-0
Montana State-Billings	2-4	-	2-4	-
Nebraska, Omaha	0-1	-	-	0-1
North Dakota	2-4	1-2	1-2	-
North Park	0-1	-	-	0-1
Northern State	16-10	4-4	7-5	5-1
Northwestern (Iowa)	0-1	-	-	0-1
Ouachita Baptist	0-3	-	0-3	-
Presentation College	0-1	-	-	0-1
Rockford University	1-0	-	-	1-0
Rockhurst University	0-2	-	-	0-2
Simpson College	1-1	-	-	1-1
SIU Edwardsville	0-1	-	0-1	-
South Dakota State	0-2	-	0-2	-
Southwest Baptist	0-2	-	0-2	-
St. Cloud State	5-15-1	3-5	0-2	2-8-1
SW Minnesota State	9-15	3-9	4-4	2-2
Upper Iowa	12-22	2-6	9-15	1-1
Valley City State	1-0	-	-	1-0
Washburn	1-6	-	1-4	0-2
Wayland Baptist	1-2	-	1-2	-
Wayne State (Neb.)	3-29	1-11	2-16	0-2
Winona State	4-22	3-7	1-15	-

BEMIDJI STATE BASEBALL



2013 Record When / Last Time / Notes

LAST TIME IT HAPPENED...

SINGLE GAME INDIVIDUAL HITTING

At-Bats:

6 Jaryd Marks at Minnesota Crookston (April 25, 2013)
7 Trevor Purvis and Jaryd Marks vs. U-Mary (April 7, 2013)

Base Hits:

4 Four vs. Minot State (April 29, 2013)
5 Zach Braun vs. Winona State (April 28, 2012)

Doubles:

2 Logan Kalis vs. St. Cloud State (May 5, 2013)
3 Colton Smith vs. Minot State (March 11, 2011)

Home Runs:

2 Logan Kalis vs. Minot State (April 29, 2013)
3 Zach Braun vs. Winona State (April 28, 2012)

Back-to-Back Home Runs:

Logan Kalis and Zach Braun vs. Concordia-St. Paul (March 30, 2013)

Runs Scored:

3 Three vs. Minot State (April 29, 2013)
4 Logan Kalis vs. SW Minnesota State (May 1, 2013)

RBIs:

4 Chad Hanson vs. Upper Iowa (April 21, 2013)
5 Matt Ellinghuysen vs. Minot State (April 29, 2013)
6 Logan Kalis vs. SW Minnesota State (May 1, 2012)
7 Logan Kalis vs. Minot State (April 29, 2013)

Walks:

3 Jaryd Marks vs. Minot State (March 14, 2013)
4 Trevor Purvis vs. Malone (March 6, 2012)

Stolen Bases:

2 Trevor Purvis vs. Minnesota Duluth (March 4, 2013)

Hit by Pitch:

2 Matt Ellinghuysen vs. Minnesota Crookston (April 25, 2013)

Walk-off Hit:

7th inn Dylan Webb vs. St. Cloud State (April 11, 2012)

Walk-off HR:

10th inn. Logan Kalis at Upper Iowa (April 21, 2013)

SINGLE-GAME INDIVIDUAL PITCHING

Complete Game Shutout Victory:

18-0 Logan Kalis at Minnesota Crookston (April 25, 2013)

Strikeouts:

10 Phil Bray vs. Jamestown College (March 16, 2013)
11 Chad Schwegel vs. Minnesota Crookston (May 6, 2012)
12 Phil Bray at Upper Iowa (March 26, 2011)
13 Phil Bray vs. Concordia-St. Paul (March 29, 2013)

SEASON INDIVIDUAL HITTING

Hitting Streaks (Since 1998)

12 Jared Podraza (April 16-30, 2005)
Tony Klaers (April 9-28, 2005)
13 John Grindelund (April 13-28, 2005)
Mike Benke (March 31-April 26, 2001)
14 Lewis Baumann (Feb. 26-April 3, 2013)
Logan Kalis (Feb. 16 - March 29, 2013)
Jaryd Marks (March 3-31, 2012)
Colton Smith (April 18-May 3, 2009)
15 Eric Pilgrim (April 15-28, 2007)
17 Brian Beuning (April 7-May 10, 2002)
26 Ben Woodford (March 13-May 10, 2002)

2013 Bemidji State Record When....

Doubleheaders	17-19
Scheduled Nine Inning Games.....	11-7
vs. Ranked Teams	2-4
On Monday	4-0
On Tuesday	1-1
On Wednesday	1-4
On Thursday	4-2
On Friday	2-4
On Saturday	4-6
On Sunday	6-3
In February	2-6
In March	9-3
In April	9-7
In May.....	2-4
Game 1 of a doubleheader.....	9-9
Game 2 of a doubleheader.....	8-10

No. 4 Winona State: A road series at Winona State was scheduled, but didn't happen due to weather this season. In 2012, BSU hosted the Warriors and went 1-3. BSU won the second game of the series 23-12, but fell 21-9, 7-6 and 20-12. Bellew is 4-22 all-time versus Winona State.

No. 5 Concordia-St. Paul: BSU and CU had its series moved from St. Paul, Minn. to Sioux Falls, S.D this year. The teams battled to a split series. On day one, the Beavers took game one 2-0 in 10 innings off a Lewis Baumann home run. BSU lost game two 5-4 and game three of the series 6-1, but capped the trip with a 7-6 victory. Bellew is 9-20 against the Golden Bears.

No. 6 Wayne State: The Beavers played the Wildcats at the H.H.H. Metrodome in nonconference play and traveled to Wayne, Neb. for a mid-week conference tilt this season. BSU lost at the Metrodome by identical scores of 3-2 (nine innings in game two). In Wayne, the Beavers fell 5-0 and 8-4. Bellew is 3-29 versus the Wildcats.

No. 7 Minnesota Duluth: BSU met UMD at the Metrodome earlier this season and defeated the Bulldogs 2-1 in nine innings off a Minnesota Duluth error. The Beavers took game two 13-6. Bellew is 9-18 all-time versus UMD.

Team Notes

- The Beavers have produced 104 runs in the sixth inning and beyond, while allowing 72.
- BSU is 12-6 when scoring first and 7-5 when posting a run in the first inning. Bemidji State leads its opponent 31-22 in the first inning this season.
- The Beavers have gone into extra innings seven times this season (5-2) after only going past the scheduled number of innings once in 2012.
- BSU posted 22 hits in the 12-5 March 16 victory against Minot State. The single game hit total was the best by any NSIC team in 2013 until April 15, then the Beavers totaled 26 hits against MISU April 29 to retake the top spot in the conference this season.
- The Beavers finished first in the NSIC and 21st nationally in batting average (.330), second in the league and 17th in the nation in fielding percentage (.970) and fifth in the conference and 81st in the nation in team ERA (4.15).
- **Team National Rankings on Page 20**

Player/Pitcher Notes

- Senior **Logan Kalis** posted a 14-game hitting streak Feb. 16-March 29. He has 13 multi-hit games and eight multi-RBI games this season.
- Senior **Lewis Baumann** recorded a 14-game hitting streak from Feb. 26-April 3 and owns a team-best (tied) 17 multi-hit games and 10 multi-RBI games.
- Senior **Phil Bray** recorded 13 strikeouts against Concordia-St. Paul March 29 to tie a career-high and own the most strikeouts by an NSIC player until April 27. He finished tied for second in the league in strikeouts with 69.
- **Individual National Rankings on Page 21**



BEMIDJI STATE BASEBALL

Notes

NSIC Preseason Poll

After narrowly missing the post season and finishing eighth in 2012 with a 16-20 league record, the Bemidji State University baseball team was picked to finish seventh in the 2013 Northern Sun Intercollegiate Conference Preseason Baseball Coaches' Poll. BSU earned 112 points and the seventh spot in the poll – its highest since 2008.

Preseason All-Americans

The Collegiate Baseball Newspaper listed its 2013 American Baseball Coaches Association (ABCA) NCAA Division II Preseason All-Americans in late January. Included as an ABCA Preseason All-American from the Central Region were Bemidji State University's **Zach Braun** (Jr., C/1B, Lakeville, Minn.) and **Logan Kalis** (Sr., 1B/RHP/1B, Little Falls, Minn.).

Senior **Jaryd Marks** (RHP/1B, Cottage Grove, Minn.) was named a Central Region Player to Watch, while freshman **Joey Hanowski** (INF/OF, Little Falls, Minn.) was named a Newcomer to Watch.

The **Preseason All-American** awards are the first of their kind under head coach Tim Bellew, who is entering his eighth season at BSU.

NSIC and NCBWA Central Region Player of the Week

Senior shortstop **Lewis Baumann** (Colorado Springs, Colo.) was named *Northern Sun Intercollegiate Conference Player of the Week* March 18, then *National Collegiate Baseball Writers Association (NCBWA) Central Region Player of the Week* March 20. Baumann is the first regional player of the week during head coach **Tim Bellew's** eight seasons.

He posted a .583 batting average on a team-high 14 hits in 24 at bats, while batting in the nine-hole position. He recorded seven extra base hits, which included four doubles, two home runs and a triple, totaled 26 bases and posted a 1.083 slugging percentage. The shortstop added eight runs and eight RBIs with one walk and one hit by pitch. He posted a .593 on-base percentage and recorded a stolen base. In the field he recorded a .957 fielding percentage with 16 assists, six putouts and was apart of three double plays.

NSIC Player of the Week

Senior **Jaryd Marks** (1B/RHP, Cottage Grove, Minn.) was named *Northern Sun Intercollegiate Conference Player of the Week* April 30, in an announcement from the league office. The conference honor is the first of Marks' career.

Marks posted a .593 batting average to guide the Beavers to a 6-0 week in NSIC play April 24-29. In 27 at-bats he recorded 16 hits, drove in 10 runs and added 10 runs scored. He totaled 20 bases and posted a .621 on-base percentage. The senior had a .741 slugging percentage and a perfect 1.000 fielding percentage after 26 putouts and two assists. The first baseman recorded two four-hit games and two three-hit games during the week. In a game against Minot State University Monday, he went 4-for-4 with three runs scored and an RBI. In 27 at-bats he had just one strikeout.

NSIC Pitcher of the Week

Senior lefty **Phil Bray** (Chatfield, Minn.) was named *Northern Sun Intercollegiate Conference Pitcher of the Week* April 1, in an announcement from the league office.

Bray didn't allow a run in eight innings of a start in the Beavers' NSIC opener March 29. He was credited with a no decision in the 2-0, 10-inning (scheduled seven-innings) victory against Concordia University, St. Paul. The senior lefty allowed just three hits (all singles) and totaled 13 strikeouts to tie a career-high and record the most Ks by an NSIC pitcher this season. In 25 at-bats, CU mustered just a .120 batting average.

With three players/pitchers earning league honors this season, 10 student-athletes have been named to the weekly award under head coach **Tim Bellew** to earn a player of the week honor from the league. (Six player, four pitcher of the week honors).

BEMIDJI STATE BASEBALL



2013 Numerical / Alphabetical Roster

Numerical Roster

No.	Name	Pos.	Ht.	Wt.	Yr.	B/T
1	Tyler Nelson	OF	6-1	185	So.	R/R
2	Cole Bjorge	OF	6-1	170	RS-So.	L/L
3	Jake Tuholsky	C	5-9	175	RS-So.	L/R
4	Gavin Nichols	OF	6-0	190	RS-Fr.	R/R
5	Joey Hanowski	INF/OF	5-10	181	Fr.	L/R
6	Andrew McCarthy	SS/3B	6-0	180	Fr.	R/R
7	Ryan Van Someren	RHP/OF	6-0	183	RS-Sr.	L/R
8	Nate Heisick	LHP	6-1	185	RS-Fr.	L/L
9	Ryan Anderson	RHP	6-2	185	Sr.	R/R
10	Chad Hanson	OF	6-4	195	RS-Jr.	L/R
11	Tyler Trosen	RHP	6-4	185	So.	R/R
12	Kevin Murphy	RHP	6-0	190	RS-Fr.	R/R
13	Cody Jenkins	2B	5-10	204	Fr.	R/R
14	Matt Hietala	INF	5-8	175	RS-So.	R/R
15	Lewis Baumann	SS	6-2	215	Sr.	R/R
16	Ross Stein	RHP	6-1	200	So.	R/R
17	Steven Prichard	3B	6-0	180	So.	R/R
19	Phil Bray	LHP	6-1	185	Sr.	L/L
20	Riley Hirsch	C/RHP	5-10	180	Sr.	R/R
22	Logan Kalis	1B/RHP/OF	6-3	215	Sr.	R/R
23	Jake Oslin	OF	6-1	195	So.	L/R
24	Trevor Purvis	OF/P	5-11	180	Sr.	L/L
26	Matt Ellinghuysen	3B	6-0	200	Sr.	R/R
27	Miles Campbell	RHP	6-4	195	Jr.	R/R
28	Jack Hegarty	INF/P	6-1	180	So.	R/R
30	Jaryd Marks	RHP/1B	6-0	220	Sr.	L/R
36	Zach Braun	C/1B	6-0	210	Jr.	R/R
39	Mike Hanson	RHP	6-1	215	RS-So.	R/R
40	Jesse Katz	RHP	6-0	180	RS-Fr.	R/R
44	Tyler Saeugling	RHP	6-4	170	So.	R/R
51	Ryan Brezinski	RHP	6-0	190	So.	R/R
	Mason Bellew	1B	6-0	180	Fr.	R/R
	Weston Brinkman	LHP	5-10	155	RS-Fr.	L/L
	Austin Kaiser	CF	6-2	180	RS-Fr.	R/R
	Mark Kosmalski	RHP	6-5	210	RS-Fr.	R/R

Coaching Staff

Head Coach: 15 - Tim Bellew (Kansas Wesleyan '87)

Eighth year at Bemidji State (118-237-1)

19th year as head coach (345-494-1)

Graduate Assistant Coach: 34 - Dan Bennett (Bemidji State '10), Third season

Support Staff

Athletic Trainer: Bill Crews

Athletic Media Relations: Dax Larson

Pronunciation Guide

Matt ELLINGHUYSEN - elling-HI-zen

Jack HEGARTY - hey-gerdy

Nate HEISICK - Hi-sick

Logan KALIS - CAL-iss

Jake OSLIN - oz-lin

Tyler SAEUGLING - sog-ling

Tyler TROSEN - TRO-shen

Jake TUHOLSKY - too-hull-sky

Alphabetical Roster

No.	Name (Pos)	Hometown (Previous School)
9	Ryan Anderson (RHP)	Hayfield, Minn. (Hayfield HS)
15	Lewis Baumann (SS)	Prior Lake, Minn. (Prior Lake HS)
	Mason Bellew (1B)	Big Lake, Minn. (Big Lake HS)
2	Cole Bjorge (OF)	Mountain Iron, Minn. (Virginia HS)
36	Zach Braun (C/1B)	Little Falls, Minn. (Little Falls HS)
19	Phil Bray (LHP)	St. Michael, Minn. (St. Michael-Albertville HS)
51	Ryan Brezinski (RHP)	Milaca, Minn. (Milaca HS)
	Weston Brinkman (LHP)	Plymouth, Minn. (Wayzata HS)
27	Miles Campbell (RHP)	Lino Lakes, Minn. (Centennial HS)
26	Matt Ellinghuysen (3B)	St. Paul, Minn. (Mounds Park Academy)
5	Joey Hanowski (INF/OF)	Cass Lake, Minn. (Cass Lake HS)
10	Chad Hanson (CF)	Longville, Minn. (Northland HS)
39	Mike Hanson (RHP)	Bemidji, Minn. (Bemidji HS)
28	Jack Hegarty (INF/P)	Bemidji, Minn. (Bemidji HS)
8	Nate Heisick (LHP)	Colorado Springs, Colo. (Falcon HS)
14	Matt Hietala (INF)	Big Lake, Minn. (Big Lake HS)
20	Riley Hirsch (C/RHP)	Mesa, Ariz. (Westwood HS)
13	Cody Jenkins (2B)	Chatfield, Minn. (Chatfield HS)
	Austin Kaiser (CF)	Little Falls, Minn. (Little Falls HS)
22	Logan Kalis (1B/RHP/OF)	Little Falls, Minn. (Little Falls HS)
40	Jesse Katz (RHP)	Mora, Minn. (Mora HS)
	Mark Kosmalski (RHP)	Rio Rancho, N.M. (Eastern Arizona CC)
30	Jaryd Marks (RHP/1B)	St. Charles, Minn. (St. Charles HS)
6	Andrew McCarthy (SS/3B)	Eden Prairie, Minn. (Holy Family Catholic HS)
12	Kevin Murphy (RHP)	Brainerd, Minn. (Centry College)
4	Gavin Nichols (OF)	Cottage Grove, Minn. (Iowa Lakes CC)
1	Tyler Nelson (OF)	Lakeville, Minn. (Lakeville North HS)
23	Jake Oslin (OF)	Cass Lake, Minn. (Cass Lake HS)
17	Steven Prichard (3B)	Deerfield, Ill. (Univ. of Illinois at Springfield)
24	Trevor Purvis (OF/P)	Dubuque, Iowa (Ellsworth CC)
44	Tyler Saeugling (RHP)	Regina, Saskatchewan (Northeastern JC)
7	Ryan Van Someren (RHP)	Bemidji, Minn. (Bemidji HS)
16	Ross Stein (RHP)	Lake Henry, Minn. (Paynesville Area HS)
11	Tyler Trosen (RHP)	Long Prairie, Minn. (Long Prairie-Grey Eagle HS)
3	Jake Tuholsky (C)	Oakdale, Minn. (Hill-Murray HS)

By Class

SENIORS (10)

Anderson, Baumann, Bray, Brezinski, Ellinghuysen, Hirsch, Kalis, Marks, Purvis, Van Someren

JUNIORS (3)

Braun, Campbell, C. Hanson

SOPHOMORES (11)

Bjorge, M. Hanson, Hegarty, Hietala, Nelson, Oslin, Prichard, Trosen, Tuholsky, Saeugling, Stein

FRESHMEN (11)

Bellew, Brinkman, Hanowski, Heisick, Jenkins, Kaiser, Katz, Kosmalski, McCarthy, Murphy, Nichols



BEMIDJI STATE BASEBALL

Coaching Staff



Tim BELLEW
HEAD COACH
 EIGHTH SEASON
 KANSAS WESLEYAN '87
 BSU RECORD: 131-250-1
 NSIC RECORD: 79-151

Tim Bellew Collegiate Coaching Record			
Year	Institution	Position	Record
1993-94	Kansas Wesleyan	Ass't Coach	---
1995	Kansas Wesleyan	Head Coach	14-24 (7-11 KCAC)
1996	Kansas Wesleyan	Head Coach	20-20 (11-9 KCAC)
1997	Kansas Wesleyan	Head Coach	27-19 (12-8 KCAC)
1998	Kansas Wesleyan	Head Coach	11-26 (7-11 KCAC)
1999	Kansas Wesleyan	Head Coach	27-18 (10-10 KCAC)
2000	Kansas Wesleyan	Head Coach	28-19 (14-6 KCAC)
2001	Kansas Wesleyan	Head Coach	29-15 (21-3 KCAC)
2002	Kansas Wesleyan	Head Coach	26-22 (16-8 KCAC)
2003	Kansas Wesleyan	Head Coach	9-31 (3-21 KCAC)
2004	Kansas Wesleyan	Head Coach	22-28 (8-16 KCAC)
2005	Kansas Wesleyan	Head Coach	14-36 (7-17 KCAC)
2006	Bemidji State	Head Coach	10-35 (3-15 NSIC)
2007	Bemidji State	Head Coach	9-41 (7-22 NSIC)
2008	Bemidji State	Head Coach	16-25-1 (13-13 NSIC)
2009	Bemidji State	Head Coach	17-36 (8-22 NSIC)
2010	Bemidji State	Head Coach	16-37 (7-25 NSIC)
2011	Bemidji State	Head Coach	18-29 (12-21 NSIC)
2012	Bemidji State	Head Coach	23-27 (16-20 NSIC)
2013	Bemidji State	Head Coach	22-20 (13-13 NSIC)
Overall	358-507-1 (.415)	BSU	131-250-1 (.346)
NSIC	79-151 (.346)	KCAC	116-120 (.492)

The third winningest coach in Bemidji State baseball history, **Tim Bellew** has amassed a 131-250-1 overall record and 79-151 mark in the Northern Sun Intercollegiate Conference (NSIC), as the skipper of the Beavers. Now in his eighth season as head coach, Bellew took over the BSU baseball program in the fall of 2005.

Under Bellew, 10 student-athletes have been named to the *NSIC All-Conference Team*, including three first team honorees. Two student-athletes have gone on to earn an all-region team nod, while catcher Zach Braun was Bellew's first All-American in 2012.

BSU has also found success in the classroom under the direction of Bellew, as 44 student-athletes have been named *Academic All-NSIC*. Highlighting that group is Josh Silvernagel, who earned the *NSIC Myles Bran All-Academic with Distinction Award* and went on to become *ESPN The Magazine College Division Academic Third-Team All-District V* in 2010.

In 2012, Bellew's climbing success guided the Beavers to a 23-27 overall and a 16-20 NSIC record to finish eighth in the league standings. The 23 victories tied for third in program history for wins in a season. At the conclusion of the campaign, three players were named All-NSIC, including two *First Team All-NSIC* members, – the first time under Bellew two players were named first team – in Braun and Logan Kalis. Both players went on to become the first players under Bellew to earn all-region laurels, while Braun was selected as an All-American from the National Collegiate Baseball Writers Association (second team) and Daktronics (second team). The 20-win season was just the sixth in 61 years of baseball at Bemidji State.

BSU went 17-36 overall and 8-22 in NSIC in 2009, then followed that season with a 16-37 overall and 7-25 NSIC record in 2010. The BSU skipper then tallied 18 wins in 2011 to record its fourth consecutive season with 16 or more wins in a season. The Beavers went 18-29 overall and 12-21 in NSIC play.

In 2008 Bellew led the Beavers to the best season in six years. BSU finished the season with a 16-25-1 record overall and a 13-13 mark in the NSIC. BSU's 16 wins and 13 conference victories were the most since the 2002 season when the Beavers were 19-11 overall and 13-3 in conference play. The skipper of the Beavers also propelled them into the NSIC Tournament for the first time since the 2002 when they picked up just their fourth tournament win. The inaugural NSIC Tournament was at the conclusion of the 1996 season.

During his time at Bemidji State Bellew has also become an active member of the Bemidji Youth Baseball organization. He has also put on baseball camps and clinics for the youth. The director of facility maintenance at the field, Bellew played a large role in the renovation process of the BSU Baseball Field in the fall of 2007.

Bellew joined the Bemidji State coaching staff after orchestrating the most-successful baseball era in the history of Kansas Wesleyan University. He took the reigns in 1995 after two years as an assistant coach and his hire began to pay dividends almost immediately. He earned Kansas Collegiate Athletic Conference Coach of the Year honors in 1996 and in 1997 he led KWU to a National Small-College Athletics Association National Championship and was named NSCAA National Coach of the Year.

KWU repeated as NSCAA National Champions in 1999 and Bellew was again named NSCAA National Coach of the Year. He qualified KWU for a berth in the NAIA Region IV tournament and in 2001 he directed KWU to its first KCAC championship in 27 years. In 10 seasons at KWU, Bellew coached 38 First-Team All-KCAC honorees, seven NAIA All-Americans and 11 NSCAA All-Americans. He also had one player drafted and two signed as free agent acquisitions. KWU recorded 20 or more wins seven times during Bellew's stint.

Bellew, an Arizona native, began his collegiate playing career at Central Arizona Junior College in 1980. He played second base and shortstop for the Vaqueros until 1982. He transferred to Kansas Wesleyan in 1985, where he earned the President's Leadership Award in 1986. In 1987, Bellew was named Second-Team All KCAC as middle infielder and helped lead KWU to an NAIA playoff berth.

Bellew graduated from Kansas Wesleyan with a bachelor of arts degree in health in 1987, and received a master of business administration degree from KWU in June of 2002.

Along with his duties as head baseball coach, Bellew is head of games management at BSU.

Bellew currently resides in Bemidji with his wife Pam, his son Mason, who is a freshman on the BSU baseball team, and his daughter Claudia.



Dan BENNETT
ASSISTANT COACH
 THIRD SEASON
 BEMIDJI STATE '10

Dan Bennett is in his third season as an assistant coach of the Bemidji State baseball team after spending five seasons as a student-athlete for the Beavers.

Last summer Bennett was the head coach of the VFW Post 1260 (Ages 16 and under) baseball team that went 24-7 and made an appearance in the VFW State Tournament.

Bennett served as Games Management graduate assistant at BSU from 2010-12. He was responsible for setting up, tearing down and staffing all BSU athletic events.

During his last year as an undergrad, he assisted with games management and started 30 out of the 32 games played, serving as the team's catcher. He has spent the last six summers in Bemidji, where he was on the grounds crew at the BSU baseball field.

Bennett, a native of Hayfield, Minn., is a 2010 graduate of BSU and obtained a degree in technology education with a coaching specialty. He earned a masters degree in sports studies from Bemidji State in 2013.

BEMIDJI STATE BASEBALL



2013 Schedule/Results

2013 Schedule/Results

Date	Opponent	Location	Innings	Time/Results
Fri, Feb. 15	vs Northern State	Minneapolis, Minn. (Metrodome)	7	L, 4-2
Fri, Feb. 15	vs Northern State	Minneapolis, Minn. (Metrodome)	7	L, 7-2
Sat, Feb. 16	vs Sioux Falls	Minneapolis, Minn. (Metrodome)	7	L, 2-1
Sat, Feb. 16	vs Sioux Falls	Minneapolis, Minn. (Metrodome)	7	W, 8-1
Thu, Feb. 21	vs Wayne State	Minneapolis, Minn. (Metrodome)	7	L, 3-2
Thu, Feb. 21	vs Wayne State	Minneapolis, Minn. (Metrodome)	7	L, 3-2 (9)
Tue, Feb. 26	vs (18) Minnesota State	Minneapolis, Minn. (Metrodome)	7	W, 2-1 (11)
Tue, Feb. 26	vs (18) Minnesota State	Minneapolis, Minn. (Metrodome)	7	L, 1-0
Mon, March 4	vs Minnesota Duluth	Minneapolis, Minn. (Metrodome)	7	W, 2-1 (9)
Mon, March 4	vs Minnesota Duluth	Minneapolis, Minn. (Metrodome)	7	W, 13-6
<i>2013 Tucson Invitational Games</i>				
Wed, March 13	vs Southwest Minnesota State	Tucson, Ariz.	9	L, 11-9
Thu, March 14	vs Minot State	Tucson, Ariz.	9	W, 12-2 (8)
Thu, March 14	vs Southwest Minnesota State	Tucson, Ariz.	9	W, 8-5
Sat, March 16	vs Minot State	Tucson, Ariz.	9	W, 12-5
Sat, March 16	vs Jamestown College	Tucson, Ariz.	9	W, 11-4
Sun, March 17	vs Macalester College	Tucson, Ariz.	9	W, 16-3 (7)
Sat, March 23	at Winona State *	Winona, Minn.	7	CANCELED
Sat, March 23	at Winona State *	Winona, Minn.	9	CANCELED
Sun, March 24	at Winona State *	Winona, Minn.	7	CANCELED
Sun, March 24	at Winona State *	Winona, Minn.	9	CANCELED
Fri, March 29	at Concordia-St. Paul *	Sioux Falls, S.D. (Ronken Field) !	7	W, 2-0 (10)
Fri, March 29	at Concordia-St. Paul *	Sioux Falls, S.D. (Ronken Field) !	9	L, 5-4
Sat, March 30	at Concordia-St. Paul *	Sioux Falls, S.D. (Ronken Field) !	7	L, 6-1
Sat, March 30	at Concordia-St. Paul *	Sioux Falls, S.D. (Ronken Field) !	9	W, 7-6
Wed, April 3	at Wayne State *	Wayne, Neb.	7	L, 5-0
Wed, April 3	at Wayne State *	Wayne, Neb.	9	L, 8-4
Sat, April 6	U-Mary *	Bismarck, N.D. (Municipal Ballpark) !	7	L, 10-7
Sat, April 6	U-Mary *	Bismarck, N.D. (Municipal Ballpark) !	9	L, 9-4
Sun, April 7	U-Mary *	Bismarck, N.D. (Municipal Ballpark) !	7	L, 2-1
Sun, April 7	U-Mary *	Bismarck, N.D. (Municipal Ballpark) !	9	W, 11-8 (15)
Wed, April 10	Augustana *	Bemidji, Minn.	7	CANCELED
Wed, April 10	Augustana *	Bemidji, Minn.	9	CANCELED
Wed, April 17	Minnesota State *	Bemidji, Minn.	7	CANCELED
Wed, April 17	Minnesota State *	Bemidji, Minn.	9	CANCELED
Sat, April 20	Upper Iowa *	Fayette, Iowa !	7	L, 2-0 (9)
Sat, April 20	Upper Iowa *	Fayette, Iowa !	9	L, 18-5 (7)
Sun, April 21	Upper Iowa *	Fayette, Iowa !	7	W, 14-3
Sun, April 21	Upper Iowa *	Fayette, Iowa !	9	W, 11-9 (10)
Wed, April 24	at Minnesota, Crookston *	Crookston, Minn.	7	W, 18-0
Wed, April 24	at Minnesota, Crookston *	Crookston, Minn.	9	W, 6-1
Sun, April 28	at Minot State *	Williston, N.D. !	7	W, 12-4
Sun, April 28	at Minot State *	Williston, N.D. !	9	W, 11-1 (7)
Mon, April 29	at Minot State *	Williston, N.D. !	7	W, 4-3
Mon, April 29	at Minot State *	Williston, N.D. !	9	W, 21-1 (7)
Wed, May 1	Southwest Minnesota State *	Bemidji, Minn.	7	W, 10-3
Wed, May 1	Southwest Minnesota State *	Bemidji, Minn.	9	L, 6-1
Fri, May 3	(12) St. Cloud State *	Bemidji, Minn.	7	W, 4-1
Fri, May 3	(12) St. Cloud State *	Bemidji, Minn.	9	L, 8-1
Sun, May 5	(12) St. Cloud State *	Bemidji, Minn.	7	L, 5-4
Sun, May 5	(12) St. Cloud State *	Bemidji, Minn.	9	L, 6-3
<i>NSIC Tournament May 8-11</i>		<i>St. Cloud, Minn.</i>		
Wed, May 8	(9) St. Cloud State	St. Cloud, Minn.	9	11 a.m.

Bold Indicates Home Games

Italics Indicates Tournament

* - Indicates Northern Sun Intercollegiate Conference games

! - Field location changed due to weather



BEMIDJI STATE BASEBALL

National Polls / NSIC Standings / NCAA Regional Poll

Collegiate Baseball Newspaper D-II Rankings May 6, 2013

Rank	Team	Record	Pts.	Prev.
1	USC Aiken	41-9	480	1
T2	Colorado Mesa	41-7	456	4
T2	Mount Olive	46-6	456	T2
4	Tampa	39-10	432	6
T5	Missouri Western	37-8	408	5
T5	Delta State	39-8-1	408	T2
7	Cal State Monterey Bay	37-13	376	8
8	St. Cloud State	31-7	372	9
9	Minnesota State-Mankato	31-8	352	12
10	Armstrong Atlantic	31-13	316	13
11	West Florida	35-11	304	10
12	Central Missouri	35-11	300	7
13	St. Mary's (Texas)	35-13	296	11
14	Lander	34-14	276	15
15	Southern Arkansas	37-15	260	14
16	UNC Pembroke	36-14	238	19
T17	Dixie State	32-15	222	NR
T17	Tarleton State	32-14-1	222	18
19	Florida Tech	32-14	192	25
20	St. Leo	35-14-1	164	NR
21	Drury	35-13	158	27
22	St. Edward's	35-15	156	22
23	Sonoma State	32-18	116	T16
24	Winston-Salem	38-10	102	28
25	Valdosta State	31-15	80	T29
26	Franklin Pierce	32-15	62	NR
27	Texas A&M Kingsville	36-15	48	T29
28	Cal State Los Angeles	31-19	38	24
29	Millersville	36-14	28	20
T30	Chico State	34-14	24	21
T30	St. Thomas Aquinas	35-11	24	NR
T30	Coker	34-14	24	NR
T30	Angelo State	35-18	24	NR

OTHERS RECEIVING VOTES: Alabama-Huntsville (8), Kutztown (8), Seton Hill (8), California (Pa.) (4), Grand Valley State (2), Georgia College (1), Catawba (1), Pace (1), Grand Canyon (1), East Stroudsburg (1), Regis (1), Lewis (1), St. Joseph's (1), Ashland (1), Wayne State (Mich.) (1), **Augustana (1)**, S.W. Oklahoma (1), Arkansas Tech. (1)

DROPPED OUT: T16 Seton Hill, No. 23 Alabama-Huntsville, No. 26 Grand Canyon, No. 30 Kutztown.

Bold italics - NSIC member

National Collegiate Baseball Writers D-II Poll May 6, 2013

Rank	Team (1st place vote)	Record	Pts.	Prev.
1.	USC Aiken (8)	41-9	224	2
2.	Tampa, Fla.	39-10	206	5
3.	Colorado Mesa (1)	41-7	204	3
4.	Cal State Monterey Bay	37-13	188	6
5.	Missouri Western	37-8	183	15
6.	Delta State, Miss.	39-8-1	179	1
7.	Mount. Olive, N.C.	46-6	173	11
8.	Wilmington, Del.	37-12	154	8
9.	St. Cloud State, Minn.	31-7	140	12
10.	Millersville, Pa.	36-14	139	13
11.	St. Mary's, Texas	35-13	134	7
12.	Drury, Mo.	35-13	126	16
13.	Chico State, Calif.	34-14	104	22
14.	West Florida	35-11	99	14
15.	Central Missouri	35-11	96	4
16.	Armstrong, Ga.	31-13	90	10
17.	Seton Hill, Pa.	39-15	88	9
18.	Grand Valley State, Mich.	28-14	68	20
19.	Texas A&M-Kingsville	38-15	54	RV
20.	Florida Tech	32-14	51	RV
21.	Minnesota State	31-8	50	23
22.	St. Thomas Aquinas, N.Y.	35-11	42	RV
23.	Winston-Salem State	38-10	37	NR
24.	UNC Pembroke	36-14	30	24
25.	Southern Arkansas	37-15	24	RV

OTHERS RECEIVING VOTES: Cal State L.A. (31-19) 20 points; Ashland, Ohio (32-16) 11 points; Kutztown, Pa (31-14) 5 points; Franklin Pierce, N.H. (32-15) 5 points; Tarleton State, Texas (34-16) 3 points; Dixie State, Utah (32-15) 2 points; Saint Leo, Fla. (35-14) 2 points.

DROPPED OUT: #17 Sonoma State, Calif; #18 Tarleton State, Texas; #19 Southern New Hampshire; #21 Alabama-Huntsville; #T25 Kutztown, Pa; #T25 St. Edwards, Texas.

Bold italics - NSIC member

Northern Sun Intercollegiate Conference Standings (FINAL REGULAR SEASON)

Rk	Team	NSIC	Overall	Strk		
1	St. Cloud State	19-3	0.864	31-7	0.816	W2
2	Minnesota State	18-4	0.818	31-8	0.795	W3
3	Augustana	21-7	0.750	36-16	0.692	W5
4	Winona State	16-7	0.696	22-15	0.595	W1
5	Concordia-St. Paul	13-7	0.650	20-14	0.588	W4
6	Wayne State	18-12	0.600	26-18	0.591	L4
7	Minnesota Duluth	14-10	0.583	14-24	0.368	W1
8	Bemidji State	13-13	0.500	22-20	0.524	L2
	Sioux Falls	14-14	0.500	20-24	0.455	L1
9	Southwest Minnesota State	11-13	0.458	17-23-1	0.427	W4
10	U-Mary	8-15	0.348	17-21-1	0.449	L2
11	Minot State	7-17	0.292	15-23	0.395	W3
12	Northern State	8-20	0.286	15-27	0.357	L1
13	Upper Iowa	6-16	0.273	14-25	0.359	L5
14	Minnesota Crookston	1-29	0.033	1-42	0.023	L8

NCAA Central Region Poll (May 1)

Rank	Team	Overall	In-Region
1	Central Missouri	33-9-0	32-8-0
2	Minnesota State-Mankato	29-8-0	24-7-0
3	Missouri Western State	35-8-0	35-8-0
4	Southern Arkansas	36-14-0	31-13-0
5	Southwestern Oklahoma St	32-13-1	28-11-0
6	St. Cloud State	25-5-0	21-3-0
7	Arkansas Tech	31-19-0	25-17-0
8	Wayne State (Neb.)	25-13-0	21-10-0

Bold italics - NSIC member

BEMIDJI STATE BASEBALL



Overall Statistics

Bemidji State University
 Overall Statistics for Bemidji State (as of May 07, 2013)
 (All games Sorted by Batting avg)

Record: 22-20 Home: 2-4 Away: 5-7 Neutral: 15-9 NSIC: 13-13

Player	AVG	GP-GS	AB	R	H	2B	3B	HR	RBI	TB	SLG%	BB	HBP	SO	GDP	OB%	SF	SH	SB-ATT	PO	A	E	FLD%
15 Baumann, Lewis...	.397	38-37	131	24	52	14	2	5	33	85	.649	6	3	29	0	.427	3	3	6-7	50	99	13	.920
24 Purvis, Trevor...	.375	39-38	144	31	54	11	1	2	28	73	.507	20	3	20	3	.456	2	3	8-10	73	2	1	.987
22 Kalis, Logan.....	.364	42-42	151	26	55	12	2	5	32	86	.570	18	6	27	0	.446	2	1	2-2	60	8	3	.958
36 Braun, Zach.....	.352	38-36	145	25	51	15	1	2	22	74	.510	8	1	23	3	.387	1	0	5-6	155	4	2	.988
26 Ellinghuysen, Mat	.348	42-42	132	28	46	10	0	0	28	56	.424	5	21	17	2	.450	2	3	0-1	19	43	13	.827
10 Hanson, Chad.....	.331	37-36	148	28	49	6	2	2	20	65	.439	14	1	34	0	.388	2	1	3-5	61	4	1	.985
30 Marks, Jaryd.....	.300	40-40	160	23	48	11	0	3	27	68	.425	11	1	26	3	.347	1	0	0-0	237	23	4	.985
5 Hanowski, Joey...	.295	35-28	112	23	33	4	1	0	19	39	.348	9	2	8	2	.352	2	0	1-1	68	22	0	1.000
28 Hegarty, Jack....	.276	28-27	98	19	27	7	0	0	5	34	.347	4	3	18	0	.324	0	4	0-0	52	82	2	.985
20 Hirsch, Riley....	.271	26-25	85	15	23	2	0	0	9	25	.294	9	1	8	0	.340	2	4	1-4	167	19	1	.995

17 Prichard, Steven.	1.000	4-0	2	3	2	1	0	0	0	3	1.500	0	0	0	0	1.000	0	0	0-0	0	2	0	1.000
4 Nichols, Gavin...	.500	7-1	8	4	4	1	0	1	4	8	1.000	1	0	1	0	.556	0	0	0-0	2	0	0	1.000
3 Tuholsky, Jake...	.333	9-2	15	3	5	0	1	0	2	7	.467	2	0	2	0	.412	0	0	0-0	19	0	0	1.000
13 Jenkins, Cody....	.246	20-16	57	12	14	4	1	0	8	20	.351	7	0	20	2	.323	1	0	1-1	19	41	2	.968
2 Bjorge, Cole.....	.192	13-8	26	4	5	2	0	0	7	7	.269	4	0	6	0	.290	1	0	1-1	8	0	0	1.000
7 Van Someren, Ryan	.000	1-0	1	0	0	0	0	0	0	0	.000	0	0	1	0	.000	0	0	0-0	1	14	0	1.000
19 Bray, Phil.....	.000	1-0	1	0	0	0	0	0	0	0	.000	0	0	1	0	.000	0	0	0-0	5	10	0	1.000
16 Stein, Ross.....	.000	1-0	1	0	0	0	0	0	0	0	.000	0	0	0	0	.000	0	0	0-0	1	6	0	1.000
14 Hietala, Matt....	.000	2-0	0	0	0	0	0	0	0	0	.000	0	0	0	0	.000	0	0	0-0	0	0	0	.000
Totals.....	.330	42-42	1417	268	468	100	11	20	244	650	.459	118	42	241	15	.393	19	19	28-38	1003	398	43	.970
Opponents.....	.287	42-42	1291	189	370	81	10	16	165	519	.402	88	39	301	19	.347	16	33	20-36	1005	428	51	.966

LOB - Team (342), Opp (275). DPs turned - Team (31), Opp (32). IBB - Team (3), Marks, J 2, Hanowski, J 1. Picked off - Braun, Z 3, Baumann, L 1, Purvis, T 1, Kalis, L 1.

(All games Sorted by Earned run avg)

Player	ERA	W-L	APP	GS	CG	SHO/CBO	SV	IP	H	R	ER	BB	SO	2B	3B	HR	AB	B/Avg	WP	HBP	BK	SFA	SHA
22 Kalis, Logan.....	1.53	4-2	10	3	2	1/0	1	35.1	27	11	6	6	37	5	1	0	122	.221	7	3	0	2	7
19 Bray, Phil.....	2.76	3-3	10	9	1	0/1	0	58.2	54	24	18	19	69	9	2	1	216	.250	4	5	2	0	4
30 Marks, Jaryd.....	3.10	4-4	8	8	3	0/0	0	52.1	44	21	18	19	46	8	1	2	193	.228	2	5	0	3	5
7 Van Someren, Ryan	3.68	4-1	13	4	0	0/0	0	36.2	43	20	15	13	30	9	1	2	141	.305	2	4	2	2	5
27 Campbell, Miles..	4.35	1-1	11	6	0	0/0	1	41.1	46	21	20	6	37	10	2	2	160	.288	3	4	1	2	1
9 Anderson, Ryan...	7.01	2-5	9	9	1	0/0	0	43.2	63	43	34	9	23	19	1	3	184	.342	3	5	0	2	6

44 Saeugling, Tyler.	0.00	0-0	1	0	0	0/0	0	1.0	4	2	0	1	0	0	0	0	6	.667	0	0	0	0	0
28 Hegarty, Jack....	3.52	2-0	10	0	0	0/0	2	23.0	28	11	9	2	23	7	0	2	95	.295	0	3	0	0	0
51 Brezinski, Ryan..	5.60	2-1	12	1	0	0/1	0	17.2	22	11	11	2	16	6	0	3	72	.306	0	5	0	2	1
40 Katz, Jesse.....	7.20	0-0	2	0	0	0/0	0	5.0	9	4	4	2	2	1	0	0	21	.429	0	1	0	1	0
16 Stein, Ross.....	8.68	0-2	6	2	1	0/0	0	18.2	28	20	18	9	17	6	2	1	76	.368	0	4	0	2	4
8 Heisick, Nate....	9.00	0-0	1	0	0	0/0	0	1.0	2	1	1	0	1	1	0	0	5	.400	0	0	0	0	0
Totals.....	4.15	22-19	42	42	8	2/1	4	334.1	370	189	154	88	301	81	10	16	1291	.287	21	39	5	16	33
Opponents.....	6.34	19-22	42	42	6	3/2	7	335.0	468	268	236	118	241	100	11	20	1417	.330	27	42	4	19	19

PB - Team (4), Braun, Z 3, Hirsch, R 1, Opp (3). Pickoffs - Team (9), Hirsch, R 3, Bray, P 2, Campbell, M 2, Van Someren 1, Kalis, L 1, Opp (6). SBA/ATT - Hirsch, R (9-19), Braun, Z (11-14), Bray, P (3-8), Van Someren (3-5), Marks, J (3-5), Anderson, R (2-4), Campbell, M (3-4), Kalis, L (3-4), Brezinski, R (2-3), Stein, R (1-2), Hegarty, J (0-1).



BEMIDJI STATE BASEBALL

Overall Statistics

Bemidji State University

Overall Statistics for Bemidji State (as of May 07, 2013)

(All games Sorted by Fielding pct)

Player	C	PO	A	E	FLD%	DPs	SBA	CSB	SBA%	PB	CI
5 Hanowski, Joey...	90	68	22	0	1.000	7	0	0	---	0	0
3 Tuholsky, Jake...	19	19	0	0	1.000	0	0	0	---	0	0
19 Bray, Phil.....	15	5	10	0	1.000	0	3	5	.375	0	0
7 Van Someren, Ryan	15	1	14	0	1.000	1	3	2	.600	0	0
9 Anderson, Ryan...	15	4	11	0	1.000	0	2	2	.500	0	0
2 Bjorge, Cole.....	8	8	0	0	1.000	0	0	0	---	0	0
16 Stein, Ross.....	7	1	6	0	1.000	0	1	1	.500	0	0
4 Nichols, Gavin...	2	2	0	0	1.000	0	0	0	---	0	0
17 Prichard, Steven.	2	0	2	0	1.000	0	0	0	---	0	0
51 Brezinski, Ryan..	1	0	1	0	1.000	0	2	1	.667	0	0
20 Hirsch, Riley....	187	167	19	1	.995	1	9	10	.474	1	0
36 Braun, Zach.....	161	155	4	2	.988	1	11	3	.786	3	0
24 Purvis, Trevor...	76	73	2	1	.987	1	0	0	---	0	0
28 Hegarty, Jack....	136	52	82	2	.985	19	0	1	.000	0	0
30 Marks, Jaryd.....	264	237	23	4	.985	24	3	2	.600	0	0
10 Hanson, Chad.....	66	61	4	1	.985	2	0	0	---	0	0
13 Jenkins, Cody....	62	19	41	2	.968	6	0	0	---	0	0
22 Kalis, Logan.....	71	60	8	3	.958	0	3	1	.750	0	0
15 Baumann, Lewis...	162	50	99	13	.920	22	0	0	---	0	0
27 Campbell, Miles..	10	2	7	1	.900	0	3	1	.750	0	0
26 Ellinghuysen, Mat	75	19	43	13	.827	2	0	0	---	0	0
8 Heisick, Nate....	0	0	0	0	.000	0	0	0	---	0	0
44 Saeugling, Tyler.	0	0	0	0	.000	0	0	0	---	0	0
14 Hietala, Matt....	0	0	0	0	.000	0	0	0	---	0	0
40 Katz, Jesse.....	0	0	0	0	.000	0	0	0	---	0	0
Totals.....	1444	1003	398	43	.970	31	20	16	.556	4	0
Opponents.....	1484	1005	428	51	.966	32	28	10	.737	3	0

Hitting minimums - 1 Games 2.0 TPA/Game

Pitching minimums - 1 Games 0.7 IP/Game

BEMIDJI STATE BASEBALL



Game Summary

Bemidji State University

Games Summary for Bemidji State (as of May 07, 2013)

(All games)

Inning-by-inning	1	2	3	4	5	6	7	8	9	EX	Total
Bemidji State	31	31	27	29	46	35	31	14	14	10	268
Opponents	22	20	30	22	23	33	24	3	10	2	189

Win-Loss Record When

Overall.....	22-20	After 6 leading....	19-0
Conference.....	13-13 trailing....	1-15
Non-Conference.....	9-7 tied.....	2-5
Home games.....	2-4	After 7 leading....	7-0
Away games.....	5-7 trailing....	1-6
Neutral site.....	15-9 tied.....	0-0
Day games.....	18-15	After 8 leading....	5-0
Night games.....	4-5 trailing....	1-6
vs Left starter....	3-9 tied.....	1-0
vs Right starter....	19-11		
1-Run games.....	4-7	Hit 0 home runs....	12-15
2-Run games.....	2-3	... 1 home run.....	7-4
5+Run games.....	13-7	... 2+ home runs....	3-1
Extra innings.....	5-2		
Shutouts.....	2-3	Opponent 0 home runs	16-12
	 1 home run.	6-6
	 2+ HRs.....	0-2
Scoring 0-2 runs....	3-12		
..... 3-5 runs....	2-6		
..... 6-9 runs....	4-2	Made 0 errors.....	13-4
..... 10+ runs....	13-0 1 error.....	6-10
	 2+ errors.....	3-6
Opponent 0-2 runs... 10-4			
..... 3-5 runs... 8-6		Opp. made 0 errors..	7-11
..... 6-9 runs... 4-7	 1 error... 4-4	
..... 10+ runs... 0-3	 2+ errors. 11-5	
Scored in 1st inning 7-5		Out-hit opponent....	18-5
Opp. scored in 1st.. 5-6		Out-hit by opponent..	2-13
Scores first..... 12-6		Hits are tied.....	2-2
Opp. scores first... 10-14			

Record when team scores:

Runs	0	1	2	3	4	5	6	7	8	9	10+
W-L	0-3	0-5	3-4	0-1	2-4	0-1	1-0	1-1	2-0	0-1	13-0

Record when opponent scores:

Runs	0	1	2	3	4	5	6	7	8	9	10+
W-L	2-0	7-1	1-3	4-2	2-1	2-3	2-3	0-1	1-2	1-1	0-3

Record when leading after:

Inn.	1	2	3	4	5	6	7	8
W-L	7-5	12-5	14-5	17-3	16-3	19-0	7-0	5-0

Record when trailing after:

Inn.	1	2	3	4	5	6	7	8
W-L	4-5	5-9	3-12	3-12	5-14	1-15	1-6	1-6

Record when tied after:

Inn.	1	2	3	4	5	6	7	8
W-L	11-10	5-6	5-3	2-5	1-3	2-5	0-0	1-0

Current losing streak: 3

Longest winning streak: 9

Longest losing streak: 5

Home attendance : 474 (6 dates avg = 79)

Away attendance : 1920 (32 dates avg = 60)

Total attendance: 2394 (38 dates avg = 63)



BEMIDJI STATE BASEBALL

Situational Statistics - Batting

Bemidji State University
 BATTING ANALYSIS for Bemidji State (as of May 07, 2013)
 (All games Sorted by Player Name)

Player	vs Left			vs Right			w/Runners On			w/Bases Empty			w/Bases Loaded			Rch as Leadoff			Fly Out	Gnd Out	Fly/Gnd
	H	AB	Avg	H	AB	Avg	H	AB	Avg	H	AB	Avg	H	AB	Avg	Rch	Ops	Pct			
15 Baumann, Lewis...	12	32	.375	40	99	.404	33	77	.429	19	54	.352	2	8	.250	10	30	.333	22	30	0.7
2 Bjorge, Cole.....	1	11	.091	4	15	.267	3	14	.214	2	12	.167	2	4	.500	1	5	.200	4	9	0.4
36 Braun, Zach.....	8	33	.242	43	112	.384	27	72	.375	24	73	.329	0	3	.000	14	32	.438	32	37	0.9
19 Bray, Phil.....	0	0	---	0	1	.000	0	0	---	0	1	.000	0	0	---	0	1	.000	0	0	0.0
26 Ellinghuysen, Mat	9	23	.391	37	109	.339	22	73	.301	24	59	.407	5	9	.556	19	37	.514	29	41	0.7
5 Hanowski, Joey...	3	29	.103	30	83	.361	22	64	.344	11	48	.229	1	6	.167	3	19	.158	36	35	1.0
10 Hanson, Chad.....	11	33	.333	38	115	.330	22	67	.328	27	81	.333	2	5	.400	28	62	.452	30	33	0.9
28 Hegarty, Jack....	5	19	.263	22	79	.278	18	54	.333	9	44	.205	0	2	.000	10	20	.500	28	24	1.2
20 Hirsch, Riley....	6	16	.375	17	69	.246	8	42	.190	15	43	.349	1	5	.200	16	27	.593	19	38	0.5
13 Jenkins, Cody....	0	13	.000	14	44	.318	10	33	.303	4	24	.167	2	4	.500	3	8	.375	10	13	0.8
22 Kalis, Logan.....	10	35	.286	45	116	.388	33	89	.371	22	62	.355	1	3	.333	15	39	.385	40	29	1.4
30 Marks, Jaryd.....	6	42	.143	42	118	.356	28	96	.292	20	64	.313	0	5	.000	17	40	.425	38	44	0.9
4 Nichols, Gavin...	2	2	1.000	2	6	.333	2	6	.333	2	2	1.000	0	1	.000	0	0	---	1	0	99.9
17 Prichard, Steven.	0	0	---	2	2	1.000	1	1	1.000	1	1	1.000	0	0	---	0	0	---	0	0	0.0
24 Purvis, Trevor...	7	26	.269	47	118	.398	37	85	.435	17	59	.288	2	3	.667	7	17	.412	26	44	0.6
7 Van Someren, Ryan	0	0	---	0	1	.000	0	1	.000	0	0	---	0	0	---	0	0	---	0	0	0.0
16 Stein, Ross.....	0	0	---	0	1	.000	0	1	.000	0	0	---	0	0	---	0	0	---	0	1	0.0
3 Tuholsky, Jake...	0	0	---	5	15	.333	2	11	.182	3	4	.750	0	1	.000	2	2	1.000	1	6	0.2
Totals.....	80	314	.255	388	1103	.352	268	786	.341	200	631	.317	18	59	.305	145	339	.428	316	384	0.8
Opponents.....	56	221	.253	314	1070	.293	185	623	.297	185	668	.277	11	32	.344	124	337	.368	301	339	0.9

Player	Pinch Hitting			With Runners In Scoring Pos			w/Rnr on 3rd And LT 2 Out			With 2 Out			2- Success Advancing Rnrs			#Rnrs Adv Rnrs			Rch Err	Rch FC	KL
	H	AB	Avg	H	AB	Avg	RBI	Ops	Pct	H	AB	Avg	RBI	Adv	Ops	Pct	w/Out	LOB			
15 Baumann, Lewis...	0	0	---	20	49	.408	7	8	.875	18	46	.391	13	47	86	.547	8	35	2	8	6
2 Bjorge, Cole.....	0	2	.000	3	10	.300	3	5	.600	2	8	.250	1	5	16	.313	2	8	3	0	3
36 Braun, Zach.....	2	2	1.000	18	45	.400	6	12	.500	16	41	.390	9	39	76	.513	7	27	3	4	12
19 Bray, Phil.....	0	0	---	0	0	---	0	0	---	0	0	---	0	0	0	---	0	0	0	0	1
26 Ellinghuysen, Mat	0	0	---	17	48	.354	10	13	.769	11	34	.324	6	46	88	.523	10	24	3	7	5
5 Hanowski, Joey...	0	1	.000	18	47	.383	8	13	.615	9	38	.237	7	40	74	.541	11	28	2	3	4
10 Hanson, Chad.....	0	0	---	14	49	.286	8	12	.667	7	31	.226	4	36	73	.493	11	23	4	6	16
28 Hegarty, Jack....	0	0	---	6	30	.200	1	3	.333	5	31	.161	1	28	62	.452	5	26	5	2	4
20 Hirsch, Riley....	0	0	---	3	24	.125	5	7	.714	7	33	.212	3	22	52	.423	13	28	3	4	5
13 Jenkins, Cody....	0	0	---	6	18	.333	2	3	.667	3	21	.143	4	15	36	.417	2	18	1	2	10
22 Kalis, Logan.....	0	0	---	16	57	.281	7	12	.583	13	42	.310	7	53	96	.552	18	34	4	4	7
30 Marks, Jaryd.....	0	0	---	17	66	.258	7	19	.368	10	49	.204	7	39	97	.402	8	47	3	3	9
4 Nichols, Gavin...	1	2	.500	1	3	.333	1	2	.500	2	4	.500	3	5	7	.714	0	3	2	0	0
17 Prichard, Steven.	0	0	---	0	0	---	0	0	---	0	0	---	0	1	1	1.000	0	0	0	0	0
24 Purvis, Trevor...	0	0	---	18	46	.391	12	15	.800	10	45	.222	6	64	99	.646	16	31	2	4	10
7 Van Someren, Ryan	0	0	---	0	1	.000	0	1	.000	0	0	---	0	0	1	.000	0	0	0	0	1
16 Stein, Ross.....	0	0	---	0	0	---	0	0	---	0	0	---	0	0	1	.000	0	0	0	1	0
3 Tuholsky, Jake...	0	2	.000	2	7	.286	0	1	.000	1	5	.200	1	7	12	.583	4	4	1	1	2
Totals.....	3	9	.333	159	500	.318	77	126	.611	114	428	.266	72	447	877	.510	115	342	38	49	95
Opponents.....	3	23	.130	113	399	.283	55	93	.591	112	420	.267	64	336	709	.474	108	275	26	38	98

Success Advancing Runners = percentage of times the batter advanced at least one runner during a plate appearance
 #Rnrs Adv w/Out = TOTAL number of runners advanced when the player made an out

BEMIDJI STATE BASEBALL



Situational Statistics - Pitching

Bemidji State University
 PITCHING ANALYSIS for Bemidji State (as of May 07, 2013)
 (All games Sorted by Player Name)

Player	vs Left			vs Right			w/Runners On			w/Bases Empty			Rch by Leadoff			with 2 Outs			Fly Out	Gnd Out	Fly/Gnd
	H	AB	Avg	H	AB	Avg	H	AB	Avg	H	AB	Avg	Rch	Ops	Pct	H	AB	Avg			
9 Anderson, Ryan...	23	68	.338	40	116	.345	37	97	.381	26	87	.299	20	48	.417	22	62	.355	51	49	1.0
19 Bray, Phil.....	11	47	.234	43	169	.254	26	95	.274	28	121	.231	20	61	.328	17	67	.254	41	52	0.8
51 Brezinski, Ryan..	10	27	.370	12	45	.267	10	43	.233	12	29	.414	11	17	.647	3	20	.150	26	10	2.6
27 Campbell, Miles..	16	61	.262	30	99	.303	23	75	.307	23	85	.271	18	42	.429	11	48	.229	39	36	1.1
28 Hegarty, Jack....	12	28	.429	16	67	.239	12	42	.286	16	53	.302	4	22	.182	13	35	.371	22	21	1.0
8 Heisick, Nate....	1	2	.500	1	3	.333	1	3	.333	1	2	.500	0	1	.000	1	2	.500	1	1	1.0
22 Kalis, Logan.....	8	34	.235	19	88	.216	7	43	.163	20	79	.253	9	34	.265	11	45	.244	24	41	0.6
40 Katz, Jesse.....	3	4	.750	6	17	.353	6	16	.375	3	5	.600	3	5	.600	0	3	.000	8	3	2.7
30 Marks, Jaryd.....	19	65	.292	25	128	.195	20	88	.227	24	105	.229	19	53	.358	13	66	.197	50	57	0.9
44 Saeugling, Tyler.	1	1	1.000	3	5	.600	4	6	.667	0	0	---	0	0	---	2	3	.667	0	1	0.0
7 Van Someren, Ryan	13	51	.255	30	90	.333	21	74	.284	22	67	.328	13	35	.371	10	42	.238	23	48	0.5
16 Stein, Ross.....	15	37	.405	13	39	.333	18	41	.439	10	35	.286	7	19	.368	9	27	.333	16	20	0.8
Totals.....	132	425	.311	238	866	.275	185	623	.297	185	668	.277	124	337	.368	112	420	.267	301	339	0.9
Opponents.....	194	607	.320	274	810	.338	268	786	.341	200	631	.317	145	339	.428	114	428	.266	316	384	0.8

Player	App-GS	IP/ App	*H/g	*R/g	*ER/g	*BB/g	*SO/g	K/BB Ratio	*2B/g	*3B/g	*HR/g	*FO/g	*GO/g	*BF/g	Stolen Bases		
															SBA	ATT	Pct
9 Anderson, Ryan...	9-9	4.85	12.98	8.86	7.01	1.85	4.74	2.6	3.92	0.21	0.62	10.51	10.10	42.46	2	4	.500
19 Bray, Phil.....	10-9	5.87	8.28	3.68	2.76	2.91	10.59	3.6	1.38	0.31	0.15	6.29	7.98	37.43	3	8	.375
51 Brezinski, Ryan..	12-1	1.47	11.21	5.60	5.60	1.02	8.15	8.0	3.06	0.00	1.53	13.25	5.09	41.77	2	3	.667
27 Campbell, Miles..	11-6	3.76	10.02	4.57	4.35	1.31	8.06	6.2	2.18	0.44	0.44	8.49	7.84	37.67	3	4	.750
28 Hegarty, Jack....	10-0	2.30	10.96	4.30	3.52	0.78	9.00	11.5	2.74	0.00	0.78	8.61	8.22	39.13	0	1	.000
8 Heisick, Nate....	1-0	1.00	18.00	9.00	9.00	0.00	9.00	99.0	9.00	0.00	0.00	9.00	9.00	45.00	0	0	---
22 Kalis, Logan.....	10-3	3.53	6.88	2.80	1.53	1.53	9.42	6.2	1.27	0.25	0.00	6.11	10.44	35.66	3	4	.750
40 Katz, Jesse.....	2-0	2.50	16.20	7.20	7.20	3.60	3.60	1.0	1.80	0.00	0.00	14.40	5.40	45.00	0	0	---
30 Marks, Jaryd.....	8-8	6.54	7.57	3.61	3.10	3.27	7.91	2.4	1.38	0.17	0.34	8.60	9.80	38.69	3	5	.600
44 Saeugling, Tyler.	1-0	1.00	36.00	18.00	0.00	9.00	0.00	0.0	0.00	0.00	0.00	0.00	9.00	63.00	0	0	---
7 Van Someren, Ryan	13-4	2.82	10.55	4.91	3.68	3.19	7.36	2.3	2.21	0.25	0.49	5.65	11.78	40.50	3	5	.600
16 Stein, Ross.....	6-2	3.11	13.50	9.64	8.68	4.34	8.20	1.9	2.89	0.96	0.48	7.71	9.64	45.80	1	2	.500
Totals.....	42-42	7.96	9.96	5.09	4.15	2.37	8.10	3.4	2.18	0.27	0.43	8.10	9.13	39.49	20	36	.737
Opponents.....	42-42	7.98	12.57	7.20	6.34	3.17	6.47	2.0	2.69	0.30	0.54	8.49	10.32	43.39	28	38	.556

* = average based on 9-inning game



BEMIDJI STATE BASEBALL

Team Game-by-Game Statistics

Bemidji State University

Team Game-by-Game for Bemidji State (as of May 07, 2013)

Batting (All games)

Date	Opponent	AB	R	H	RBI	2B	3B	HR	BB	IBB	SB	CS	HBP	SAC	SF	GDP	K	PO	A	E	Avg
Feb 15, 2013	vs Northern State	22	2	4	2	2	1	0	4	0	0	1	0	0	0	0	4	21	12	1	.182
Feb 15, 2013	vs Northern State	23	2	3	1	0	0	0	5	0	0	0	0	0	0	0	7	18	7	0	.156
Feb 16, 2013	vs Sioux Falls	27	1	6	1	3	0	0	1	0	0	0	1	0	0	0	12	19	1	0	.181
Feb 16, 2013	vs Sioux Falls	30	8	13	8	3	0	0	2	0	2	0	1	0	0	0	2	21	7	1	.255
Feb 21, 2013	vs Wayne State	23	2	4	1	1	0	0	1	0	0	0	0	2	0	1	6	18	12	3	.240
Feb 21, 2013	vs Wayne State	35	2	9	1	2	0	1	3	1	0	0	0	1	0	2	6	27	11	3	.244
Feb 26, 2013	vs Minnesota State	39	2	8	1	3	0	0	1	0	0	0	3	2	0	0	13	33	13	1	.236
Feb 26, 2013	vs Minnesota State	23	0	4	0	2	0	0	1	0	0	1	0	0	0	1	5	21	7	1	.230
Mar 04, 2013	vs Minnesota Duluth	31	2	6	1	0	0	0	3	0	1	0	1	1	0	1	6	27	13	1	.225
Mar 04, 2013	vs Minnesota Duluth	36	13	16	13	4	0	0	5	0	4	0	0	1	0	0	5	21	10	1	.253
Mar 13, 2013	vs Southwest Minnesota	35	9	11	9	1	3	0	4	0	1	0	1	1	3	1	6	27	10	3	.259
Mar 14, 2013	vs Minot State	32	12	12	11	5	0	1	6	0	2	2	1	0	1	1	8	24	7	0	.270
Mar 14, 2013	vs Southwest Minnesota	38	8	15	7	5	1	0	3	1	2	1	2	0	1	1	5	27	11	1	.282
Mar 16, 2013	vs Minot State	45	12	22	11	4	1	1	3	0	1	0	3	0	0	2	3	27	11	0	.303
Mar 16, 2013	vs Jamestown College	43	11	18	11	4	0	1	5	0	0	0	1	1	0	1	6	27	9	0	.313
Mar 17, 2013	vs Macalester	33	16	17	16	6	2	0	7	0	0	1	5	0	3	0	1	21	3	0	.326
Mar 29, 2013	vs *Concordia-St. Paul	34	2	8	2	1	0	1	5	0	0	1	0	1	0	0	5	30	9	0	.321
Mar 29, 2013	vs *Concordia-St. Paul	31	4	9	4	1	0	1	0	0	1	0	1	0	0	0	5	18	14	1	.319
Mar 30, 2013	vs *Concordia-St. Paul	25	1	3	1	0	0	1	1	0	2	0	1	0	0	0	10	18	5	1	.311
Mar 30, 2013	vs *Concordia-St. Paul	37	7	11	7	2	0	3	0	0	0	0	1	0	0	0	8	27	9	0	.310
Apr 03, 2013	at *Wayne State	24	0	3	0	2	0	0	2	0	0	0	0	0	0	0	7	18	8	1	.303
Apr 03, 2013	at *Wayne State	37	4	10	4	3	0	0	6	0	3	0	0	0	0	0	13	24	11	0	.302
Apr 06, 2013	*U-Mary	36	7	16	5	7	0	0	2	0	0	0	0	0	0	0	3	21	10	1	.309
Apr 06, 2013	*U-Mary	35	4	11	4	3	0	2	2	0	1	0	1	0	0	0	5	27	15	1	.309
Apr 07, 2013	*U-Mary	27	1	7	0	0	0	0	2	0	0	0	1	2	0	0	1	21	9	3	.307
Apr 07, 2013	*U-Mary	54	11	17	10	2	0	2	4	0	2	0	3	3	3	0	6	45	18	3	.308
Apr 20, 2013	*Upper Iowa	31	0	6	0	1	0	0	1	0	0	0	0	1	0	0	11	27	9	0	.304
Apr 20, 2013	*Upper Iowa	31	5	11	5	4	0	0	0	0	0	0	0	1	1	0	10	21	10	4	.305
Apr 21, 2013	*Upper Iowa	37	14	17	11	3	0	0	3	0	4	1	1	0	0	0	2	21	10	0	.311
Apr 21, 2013	*Upper Iowa	46	11	17	10	3	0	1	3	0	0	1	0	0	0	1	5	30	8	3	.314
Apr 25, 2013	at *Minnesota, Crookston	40	18	17	15	4	1	0	7	0	1	0	3	0	1	0	1	21	9	0	.318
Apr 25, 2013	at *Minnesota, Crookston	42	6	15	6	3	0	0	3	0	1	0	1	0	0	0	4	27	10	1	.320
Apr 28, 2013	vs *Minot State	37	12	19	10	3	0	0	3	0	0	1	0	1	0	0	5	21	5	0	.326
Apr 28, 2013	vs *Minot State	40	11	19	10	1	0	0	0	0	0	0	1	0	1	0	2	21	7	0	.331
Apr 29, 2013	vs *Minot State	26	4	6	4	0	0	1	4	0	0	0	0	0	0	0	5	21	8	0	.329
Apr 29, 2013	vs *Minot State	46	21	26	21	4	1	2	4	0	0	0	3	0	2	0	7	21	8	2	.338
May 01, 2013	*Southwest Minnesota	31	10	15	9	1	1	0	3	0	0	0	3	1	2	0	6	21	10	0	.342
May 01, 2013	*Southwest Minnesota	33	1	6	1	2	0	0	1	0	0	0	0	0	0	1	5	27	12	1	.337
May 03, 2013	*St. Cloud State	29	4	11	3	2	0	1	2	0	0	0	1	0	0	0	2	21	6	0	.338
May 03, 2013	*St. Cloud State	30	1	5	1	0	0	0	1	0	0	0	0	0	1	2	4	27	11	1	.335
May 05, 2013	*St. Cloud State	30	4	9	4	3	0	1	2	1	0	0	0	0	0	0	6	21	14	3	.334
May 05, 2013	*St. Cloud State	33	3	6	3	0	0	0	3	0	0	0	2	0	0	0	8	27	9	1	.330
Totals		1417	268	468	244	100	11	20	118	3	28	10	42	19	19	15	241	1003	398	43	.330

BEMIDJI STATE BASEBALL



Pitching Game-by-Game Statistics

Bemidji State University

Team Game-by-Game for Bemidji State (as of May 07, 2013)

Pitching (All games)

Date	Opponent	IP	H	R	ER	BB	SO	2B	3B	HR	WP	BK	HBP	DP	IBB	Score	W-L	SV	ERA
Feb 15, 2013	vs Northern State	7.0	8	4	0	2	5	1	1	0	0	0	2	1	0	2-4	0-1	0	0.00
Feb 15, 2013	vs Northern State	6.0	9	7	7	2	3	2	0	0	0	0	3	0	0	2-7	0-2	0	4.85
Feb 16, 2013	vs Sioux Falls	6.1	5	2	2	1	8	1	1	0	0	0	1	0	0	1-2	0-3	0	4.19
Feb 16, 2013	vs Sioux Falls	7.0	5	1	0	1	6	1	0	0	1	0	2	1	0	8-1	1-3	0	3.08
Feb 21, 2013	vs Wayne State	6.0	4	3	3	1	4	1	0	0	0	0	1	0	0	2-3	1-4	0	3.34
Feb 21, 2013	vs Wayne State	9.0	10	3	2	1	5	2	1	0	1	0	0	3	0	2-3	1-5	0	3.05
Feb 26, 2013	vs Minnesota State	11.0	7	1	1	1	9	2	0	0	0	0	2	2	0	2-1	2-5	0	2.58
Feb 26, 2013	vs Minnesota State	7.0	1	1	1	2	5	0	0	0	1	0	0	0	0	0-1	2-6	0	2.43
Mar 04, 2013	vs Minnesota Duluth	9.0	6	1	1	3	7	1	1	0	0	0	0	2	0	2-1	3-6	0	2.24
Mar 04, 2013	vs Minnesota Duluth	7.0	7	6	3	3	6	1	0	0	0	0	0	1	0	13-6	4-6	0	2.39
Mar 13, 2013	vs Southwest Minnesota	9.0	15	11	10	7	11	5	2	0	1	0	2	1	16	9-11	4-7	0	3.20
Mar 14, 2013	vs Minot State	8.0	5	2	2	3	7	1	0	0	0	0	2	0	0	12-2	5-7	0	3.12
Mar 14, 2013	vs Southwest Minnesota	9.0	10	5	4	0	5	3	0	1	0	0	0	0	0	8-5	6-7	1	3.20
Mar 16, 2013	vs Minot State	9.0	10	5	5	3	6	4	1	0	0	0	1	2	32	12-5	7-7	1	3.34
Mar 16, 2013	vs Jamestown College	9.0	12	4	4	1	11	1	0	1	1	0	1	1	0	11-4	8-7	1	3.39
Mar 17, 2013	vs Macalester	7.0	9	3	3	1	7	3	0	0	0	0	1	0	0	16-3	9-7	1	3.42
Mar 29, 2013	vs *Concordia-St. Paul	10.0	3	0	0	6	15	0	0	0	0	0	0	2	0	2-0	10-7	1	3.17
Mar 29, 2013	vs *Concordia-St. Paul	6.0	8	5	4	0	5	2	0	1	1	0	1	0	0	4-5	10-8	1	3.29
Mar 30, 2013	vs *Concordia-St. Paul	6.0	8	6	5	0	6	1	0	1	1	0	0	1	0	1-6	10-9	1	3.46
Mar 30, 2013	vs *Concordia-St. Paul	9.0	8	6	6	5	13	2	0	1	1	0	0	0	0	7-6	11-9	2	3.60
Apr 03, 2013	at *Wayne State	6.0	7	5	4	0	3	0	0	1	0	0	1	0	0	0-5	11-10	2	3.69
Apr 03, 2013	at *Wayne State	8.0	12	8	8	4	8	6	1	1	2	1	0	1	16	4-8	11-11	2	3.94
Apr 06, 2013	*U-Mary	7.0	11	10	8	4	8	1	0	0	2	1	0	0	0	7-10	11-12	2	4.19
Apr 06, 2013	*U-Mary	9.0	19	9	9	3	2	4	0	1	2	0	1	3	0	4-9	11-13	2	4.42
Apr 07, 2013	*U-Mary	7.0	3	2	0	1	3	2	0	0	0	0	0	0	0	1-2	11-14	2	4.26
Apr 07, 2013	*U-Mary	15.0	17	8	8	1	12	4	2	1	0	1	2	0	0	11-8	12-14	2	4.30
Apr 20, 2013	*Upper Iowa	9.0	8	2	2	2	8	1	0	2	0	0	1	1	0	0-2	12-15	2	4.20
Apr 20, 2013	*Upper Iowa	7.0	18	18	10	5	6	2	0	1	0	0	1	0	0	5-18	12-16	2	4.47
Apr 21, 2013	*Upper Iowa	7.0	8	3	3	3	7	1	0	0	0	0	0	1	16	14-3	13-16	2	4.45
Apr 21, 2013	*Upper Iowa	10.0	21	9	6	1	12	5	0	1	0	1	1	1	0	11-9	14-16	2	4.49
Apr 25, 2013	at *Minnesota, Crookston	7.0	2	0	0	0	7	0	0	0	0	0	0	0	0	18-0	15-16	2	4.37
Apr 25, 2013	at *Minnesota, Crookston	9.0	4	1	0	2	13	0	0	0	0	0	2	0	0	6-1	16-16	2	4.22
Apr 28, 2013	vs *Minot State	7.0	8	4	4	0	9	2	0	0	1	1	2	1	0	12-4	17-16	2	4.24
Apr 28, 2013	vs *Minot State	7.0	9	1	1	2	7	0	0	0	0	0	1	1	0	11-1	18-16	2	4.16
Apr 29, 2013	vs *Minot State	7.0	7	3	3	3	8	3	0	0	3	0	1	0	0	4-3	19-16	3	4.16
Apr 29, 2013	vs *Minot State	7.0	8	1	1	1	3	2	0	0	0	0	1	0	0	21-1	20-16	3	4.09
May 01, 2013	*Southwest Minnesota	7.0	8	3	3	3	8	0	0	1	0	0	0	3	0	10-3	21-16	4	4.08
May 01, 2013	*Southwest Minnesota	9.0	11	6	6	6	9	2	0	0	0	0	1	1	0	1-6	21-17	4	4.14
May 03, 2013	*St. Cloud State	7.0	4	1	1	1	8	0	0	0	0	0	1	1	0	4-1	22-17	4	4.07
May 03, 2013	*St. Cloud State	9.0	14	8	7	2	5	3	0	2	0	0	1	0	0	1-8	22-18	4	4.16
May 05, 2013	*St. Cloud State	7.0	9	5	2	1	3	2	0	0	2	0	1	0	0	4-5	22-19	4	4.12
May 05, 2013	*St. Cloud State	9.0	12	6	5	0	8	7	0	0	1	0	2	0	0	3-6	22-20	4	4.15
Totals		334.1	370	189	154	88	301	81	10	16	21	5	39	31	80	268-189	22-20	4	4.15

* = NSIC game



BEMIDJI STATE BASEBALL

Game Results

Bemidji State University

Game Results for Bemidji State (as of May 07, 2013)

(All games)

Game date	Opposing team	Score	r	h	e/	r	h	e	Inns	Overall	NSIC	Pitcher of record	Attend Time
-----	-----	---	---	---	/	---	---	---	---	---	---	-----	-----
Feb 15, 2013	vs Northern State	2-4 L	2	4	1/	4	8	0	7	0- 1- 0	0- 0- 0	Bray, P (L 0-1)	0 1:46
Feb 15, 2013	vs Northern State	2-7 L	2	3	0/	7	9	0	7	0- 2- 0	0- 0- 0	Anderson, R (L 0-1)	0 1:58
Feb 16, 2013	vs Sioux Falls	1-2 L	1	6	0/	2	5	0	7	0- 3- 0	0- 0- 0	Marks, J (L 0-1)	0 1:41
Feb 16, 2013	vs Sioux Falls	W 8-1	8	13	1/	1	5	0	7	1- 3- 0	0- 0- 0	Campbell, M (W 1-0)	0 1:55
Feb 21, 2013	vs Wayne State	2-3 L	2	4	3/	3	4	0	7	1- 4- 0	0- 0- 0	Bray, P (L 0-2)	54 1:35
Feb 21, 2013	vs Wayne State	2-3 L	2	9	3/	3	10	2	(9)	1- 5- 0	0- 0- 0	Kalis, L (L 0-1)	54 2:18
Feb 26, 2013	vs #18 Minnesota State	W 2-1	2	8	1/	1	7	2	(11)	2- 5- 0	0- 0- 0	Kalis, L (W 1-1)	158 2:38
Feb 26, 2013	vs #18 Minnesota State	0-1 L	0	4	1/	1	1	0	7	2- 6- 0	0- 0- 0	Marks, J (L 0-2)	158 1:24
Mar 04, 2013	vs Minnesota Duluth	W 2-1	2	6	1/	1	6	2	(9)	3- 6- 0	0- 0- 0	Kalis, L (W 2-1)	45 2:10
Mar 04, 2013	vs Minnesota Duluth	W 13-6	13	16	1/	6	7	0	7	4- 6- 0	0- 0- 0	Hegarty, J (W 1-0)	34 2:04
Mar 13, 2013	vs Southwest Minnesota	9-11 L	9	11	3/11	15	3	3	9	4- 7- 0	0- 0- 0	Stein, R (L 0-1)	105 2:59
Mar 14, 2013	vs Minot State	W 12-2	12	12	0/	2	5	3	8	5- 7- 0	0- 0- 0	Marks, J (W 1-2)	88 2:10
Mar 14, 2013	vs Southwest Minnesota	W 8-5	8	15	1/	5	10	1	9	6- 7- 0	0- 0- 0	Anderson, R (W 1-1)	124 1:59
Mar 16, 2013	vs Minot State	W 12-5	12	22	0/	5	10	1	9	7- 7- 0	0- 0- 0	Van Someren (W 1-0)	113 2:17
Mar 16, 2013	vs Jamestown College	W 11-4	11	18	0/	4	12	0	9	8- 7- 0	0- 0- 0	Bray, P (W 1-2)	0 2:13
Mar 17, 2013	vs Macalester	W 16-3	16	17	0/	3	9	1	7	9- 7- 0	0- 0- 0	Brezinski, R (W 1-0)	45 2:15
*Mar 29, 2013	vs Concordia-St. Paul	W 2-0	2	8	0/	0	3	0	(10)	10- 7- 0	1- 0- 0	Brezinski, R (W 2-0)	- 2:40
*Mar 29, 2013	vs Concordia-St. Paul	4-5 L	4	9	1/	5	8	2	7	10- 8- 0	1- 1- 0	Anderson, R (L 1-2)	58 1:37
*Mar 30, 2013	vs Concordia-St. Paul	1-6 L	1	3	1/	6	8	1	7	10- 9- 0	1- 2- 0	Campbell, M (L 1-1)	- 1:37
*Mar 30, 2013	vs Concordia-St. Paul	W 7-6	7	11	0/	6	8	0	9	11- 9- 0	2- 2- 0	Marks, J (W 2-2)	34 2:14
*Apr 03, 2013	at Wayne State	0-5 L	0	3	1/	5	7	0	7	11-10- 0	2- 3- 0	None	-
*Apr 03, 2013	at Wayne State	4-8 L	4	10	0/	8	12	0	9	11-11- 0	2- 4- 0	Van Someren (L 1-1)	64 2:30
*Apr 06, 2013	at U-Mary	7-10 L	7	16	1/10	11	2	7	7	11-12- 0	2- 5- 0	Bray, P (L 1-3)	65 2:15
*Apr 06, 2013	at U-Mary	4-9 L	4	11	1/	9	19	0	9	11-13- 0	2- 6- 0	Anderson, R (L 1-3)	72 2:15
*Apr 07, 2013	at U-Mary	1-2 L	1	7	3/	2	3	3	7	11-14- 0	2- 7- 0	Marks, J (L 2-3)	43 1:35
*Apr 07, 2013	at U-Mary	W 11-8	11	17	3/	8	17	1	(15)	12-14- 0	3- 7- 0	Van Someren (W 2-1)	57 3:44
*Apr 20, 2013	at Upper Iowa	0-2 L	0	6	0/	2	8	0	(9)	12-15- 0	3- 8- 0	Brezinski, R (L 2-1)	75 2:00
*Apr 20, 2013	at Upper Iowa	5-18 L	5	11	4/18	18	1	7	7	12-16- 0	3- 9- 0	Anderson, R (L 1-4)	75 2:30
*Apr 21, 2013	at Upper Iowa	W 14-3	14	17	0/	3	8	5	7	13-16- 0	4- 9- 0	Marks, J (W 3-3)	75 2:00
*Apr 21, 2013	at Upper Iowa	W 11-9	11	17	3/	9	21	2	(10)	14-16- 0	5- 9- 0	Hegarty, J (W 2-0)	75 3:15
*Apr 25, 2013	at Minnesota, Crookston	W 18-0	18	17	0/	0	2	5	7	15-16- 0	6- 9- 0	Kalis, L (W 3-1)	76 1:38
*Apr 25, 2013	at Minnesota, Crookston	W 6-1	6	15	1/	1	4	3	9	16-16- 0	7- 9- 0	Van Someren (W 3-1)	63 2:10
*Apr 28, 2013	vs Minot State	W 12-4	12	19	0/	4	8	3	7	17-16- 0	8- 9- 0	Bray, P (W 2-3)	-
*Apr 28, 2013	vs Minot State	W 11-1	11	19	0/	1	9	2	7	18-16- 0	9- 9- 0	Marks, J (W 4-3)	49 2:02
*Apr 29, 2013	vs Minot State	W 4-3	4	6	0/	3	7	0	7	19-16- 0	10- 9- 0	Kalis, L (W 4-1)	33 1:47
*Apr 29, 2013	vs Minot State	W 21-1	21	26	2/	1	8	2	7	20-16- 0	11- 9- 0	Anderson, R (W 2-4)	28 2:25
*May 01, 2013	SOUTHWEST MINNESOTA	W 10-3	10	15	0/	3	8	2	7	21-16- 0	12- 9- 0	Van Someren (W 4-1)	76 2:10
*May 01, 2013	SOUTHWEST MINNESOTA	1-6 L	1	6	1/	6	11	1	9	21-17- 0	12-10- 0	Stein, R (L 0-2)	67 1:50
*May 03, 2013	#12 ST. CLOUD STATE	W 4-1	4	11	0/	1	4	0	7	22-17- 0	13-10- 0	Bray, P (W 3-3)	101 1:41
*May 03, 2013	#12 ST. CLOUD STATE	1-8 L	1	5	1/	8	14	1	9	22-18- 0	13-11- 0	Marks, J (L 4-4)	87 1:56
*May 05, 2013	#12 ST. CLOUD STATE	4-5 L	4	9	3/	5	9	0	7	22-19- 0	13-12- 0	Kalis, L (L 4-2)	67 1:57
*May 05, 2013	#12 ST. CLOUD STATE	3-6 L	3	6	1/	6	12	0	9	22-20- 0	13-13- 0	Anderson, R (L 2-5)	76 2:20

() extra inning game

BEMIDJI STATE BASEBALL



Player AB-R-H-RBI Statistics

Bemidji State University
 AB-R-H-RBI Breakdown for Bemidji State (as of May 07, 2013)
 (All games)

Opponent	Date	#15	#2	#36	#19	#26	#5	#10	#28	#20	#13	#22	#30	#4	#17	#24	#7	#16	#3
		BAUMANN, B	GEORGE, C	BRAND, Z	BRAY, P	ELLINGHU	HANOWSKI	HANSON, C	HGGARTY, H	HIRSCH, R	JENKINS, K	KALIS, L	MARKS, J	NICHOLS, P	RICHARD	PURVIS, T	SOMEREN, S	STEIN, R	TUHOISKY
NSU	Feb 15	2-0-0-0	3-1-1-1	2-0-0-0	3-0-0-0	3-0-0-0	2-0-0-0	2-0-0-0	3-0-0-0	3-0-0-0	3-0-0-0	3-0-0-0	2-0-2-1	2-1-1-0	2-1-1-0	2-1-1-0	2-1-1-0	2-1-1-0	2-1-1-0
NSU	Feb 15	3-0-1-1	2-0-1-0	2-0-1-0	Def..	2-1-0-0	2-1-0-0	3-0-0-0	3-0-0-0	3-0-0-0	3-0-0-0	2-0-0-0	3-0-0-0	3-0-0-0	Def..	3-0-0-0	3-0-0-0	3-0-0-0	3-0-0-0
SFBB	Feb 16	3-0-1-0	3-0-0-0	3-0-2-1	3-0-0-0	4-1-2-0	4-1-2-0	3-0-0-0	4-1-2-0	4-1-2-0	3-0-0-0	2-0-0-0	3-0-1-0	3-0-1-0	3-0-1-0	3-0-1-0	3-0-1-0	3-0-1-0	3-0-1-0
SFBB	Feb 16	3-3-3-0	4-1-1-0	4-1-1-0	3-1-1-2	3-1-1-2	3-1-1-2	3-1-1-2	4-0-0-0	4-0-0-0	3-2-2-0	4-0-3-2	2-0-0-0	2-0-0-0	2-0-0-0	2-0-0-0	2-0-0-0	2-0-0-0	2-0-0-0
WSC	Feb 21	2-1-0-0	3-0-1-0	3-0-0-1	2-0-0-0	2-0-1-0	2-0-0-0	2-0-1-0	3-0-0-0	3-0-0-0	3-0-0-0	3-0-0-0	3-0-0-0	3-0-0-0	3-0-0-0	0-0-0-0	0-0-0-0	0-0-0-0	0-0-0-0
NSU	Feb 21	4-1-2-1	5-0-0-0	4-0-1-0	3-0-0-0	Def..	4-0-1-0	4-0-2-0	4-0-2-0	4-0-2-0	4-0-2-0	4-1-1-0	4-1-1-0	4-0-1-0	4-0-1-0	4-0-1-0	4-0-1-0	4-0-1-0	4-0-1-0
NSU	Feb 26	5-0-0-0	5-1-1-0	5-1-1-0	5-0-2-0	4-0-1-0	5-0-2-0	4-0-1-0	4-0-1-0	4-0-1-0	4-0-1-0	4-0-1-0	5-1-2-0	5-1-2-0	5-1-2-0	4-0-1-0	4-0-1-0	4-0-1-0	4-0-1-0
NSU	Feb 26	2-0-1-0	3-0-0-0	3-0-0-0	3-0-0-0	2-0-1-0	3-0-0-0	4-0-1-0	3-0-0-0	3-0-0-0	2-0-0-0	3-0-1-0	3-0-0-0	3-0-0-0	3-0-0-0	2-0-1-0	2-0-1-0	2-0-1-0	2-0-1-0
UMDSBS	Mar 04	4-1-1-0	4-0-0-0	4-0-1-1	4-0-2-0	4-0-0-0	4-0-2-0	4-0-0-0	4-0-0-0	4-0-0-0	3-0-0-0	3-0-1-0	3-0-1-0	3-0-1-0	3-0-1-0	2-0-0-0	2-0-0-0	2-0-0-0	2-0-0-0
UMDSBS	Mar 04	3-1-2-1	1-2-1-0	1-2-1-0	4-0-3-3	2-1-0-0	4-1-1-0	4-1-1-0	4-1-1-0	4-1-1-0	3-0-0-0	4-2-2-3	5-1-1-1	5-1-1-1	5-1-1-1	5-3-3-4	5-3-3-4	5-3-3-4	5-3-3-4
SMSU	Mar 13	3-0-2-2	5-1-1-1	5-1-1-1	5-1-2-1	4-2-0-0	4-2-0-0	4-2-0-0	4-2-0-0	4-2-0-0	3-2-2-2	5-1-2-0	5-1-2-0	5-1-2-0	5-1-2-0	2-1-1-2	2-1-1-2	2-1-1-2	2-1-1-2
MINOT	Mar 14	4-1-2-1	3-1-1-3	1-0-1-2	4-1-0-0	4-1-0-0	4-1-0-0	4-1-0-0	4-2-3-1	3-1-1-1	3-2-1-0	3-1-1-2	4-0-2-2	4-0-2-2	4-0-2-2	5-1-1-1	5-1-1-1	5-1-1-1	5-1-1-1
MINOT	Mar 14	4-1-2-0	5-0-2-0	5-0-2-0	5-0-0-0	1-0-0-0	1-0-0-0	1-0-0-0	4-2-3-1	3-1-1-1	3-2-1-0	4-0-2-2	4-0-2-2	4-0-2-2	5-1-3-3	5-1-3-3	5-1-3-3	5-1-3-3	5-1-3-3
JC	Mar 16	3-2-3-0	6-1-3-4	6-1-3-4	6-2-3-2	5-1-3-1	6-2-3-2	5-1-3-1	5-1-3-1	5-1-3-1	5-1-3-1	5-1-3-1	5-1-2-1	5-1-2-1	5-1-2-1	6-2-3-2	6-2-3-2	6-2-3-2	6-2-3-2
MAC	Mar 17	5-1-2-2	3-2-2-0	3-2-2-0	3-0-1-0	5-1-1-0	3-0-1-0	1-1-1-2	3-1-2-0	3-1-2-0	2-2-2-3	2-2-1-2	6-1-2-2	6-1-2-2	6-1-2-2	5-0-3-1	5-0-3-1	5-0-3-1	5-0-3-1
CU	Mar 29	4-1-1-2	3-0-0-0	3-0-0-0	4-0-1-0	3-0-2-0	4-0-1-0	4-0-1-0	3-1-2-0	3-1-2-0	2-2-2-3	2-2-2-3	5-0-0-0	5-0-0-0	5-0-0-0	3-0-1-0	3-0-1-0	3-0-1-0	3-0-1-0
CU	Mar 29	3-1-2-1	4-0-1-0	4-0-1-0	4-2-1-0	4-2-1-0	4-2-1-0	4-2-1-0	3-0-1-0	3-0-1-0	3-0-0-0	3-0-0-1	4-0-1-1	4-0-1-1	4-0-1-1	4-1-2-1	4-1-2-1	4-1-2-1	4-1-2-1
CU	Mar 30	5-0-2-1	4-2-2-1	4-2-2-1	5-1-2-1	4-1-1-0	4-1-1-0	4-1-1-0	4-0-0-1	4-0-0-1	Def..	4-1-1-1	3-0-0-0	3-0-0-0	3-0-0-0	2-0-0-0	2-0-0-0	2-0-0-0	2-0-0-0
WSC	Apr 03	3-0-1-0	3-0-1-0	3-0-1-0	3-0-0-0	3-0-0-0	3-0-0-0	2-0-0-0	4-0-0-0	4-0-0-0	3-0-0-0	2-0-0-0	3-0-0-0	3-0-0-0	3-0-0-0	4-0-0-0	4-0-0-0	4-0-0-0	4-0-0-0
WSC	Apr 03	3-0-0-0	0-1-0-0	0-1-0-0	4-1-2-2	4-1-2-0	4-1-2-0	4-1-2-0	4-0-0-0	4-0-0-0	3-0-0-0	4-0-0-0	4-0-0-0	4-0-0-0	4-0-0-0	2-0-0-0	2-0-0-0	2-0-0-0	2-0-0-0
MARY	Apr 06	3-2-2-1	4-0-3-1	4-0-3-1	5-2-4-1	4-1-2-0	5-2-4-1	4-1-2-0	4-0-0-0	4-0-0-0	3-0-0-0	4-0-1-1	3-1-1-0	3-1-1-0	3-1-1-0	5-0-0-0	5-0-0-0	5-0-0-0	5-0-0-0
MARY	Apr 06	3-0-1-0	3-0-1-0	3-0-1-0	4-0-1-0	4-0-1-0	4-0-1-0	4-0-1-0	4-1-1-0	4-1-1-0	4-1-1-0	4-2-2-2	4-2-2-2	4-2-2-2	4-2-2-2	2-0-0-0	2-0-0-0	2-0-0-0	2-0-0-0
MARY	Apr 07	2-0-1-0	3-0-0-0	3-0-0-0	3-1-0-0	3-1-2-0	3-1-2-0	3-1-2-0	3-0-1-0	3-0-1-0	4-0-0-0	4-0-0-0	4-0-0-0	4-0-0-0	4-0-0-0	7-0-2-0	7-0-2-0	7-0-2-0	7-0-2-0
MARY	Apr 07	6-0-2-2	0-0-0-1	4-1-2-0	4-2-1-0	6-2-3-0	6-2-3-0	5-0-1-0	4-1-0-1	4-1-0-1	3-0-1-0	3-0-1-0	1-2-1-3	1-2-1-3	1-2-1-3	7-2-3-3	7-2-3-3	7-2-3-3	7-2-3-3
UTU	Apr 20	3-0-0-0	4-0-1-0	4-0-1-0	4-0-0-0	4-0-0-0	4-0-0-0	3-0-0-0	2-0-0-0	2-0-0-0	4-0-0-0	4-0-0-0	4-0-0-0	4-0-0-0	4-0-0-0	4-0-2-0	4-0-2-0	4-0-2-0	4-0-2-0
UTU	Apr 20	2-1-1-2	2-0-1-1	2-0-1-1	4-1-1-0	4-1-1-0	4-1-1-0	4-1-1-0	4-0-0-0	4-0-0-0	4-0-0-0	2-0-1-0	2-0-1-0	2-0-1-0	2-0-1-0	4-0-2-0	4-0-2-0	4-0-2-0	4-0-2-0
UTU	Apr 21	3-1-2-2	4-1-0-0	4-1-0-0	5-1-4-4	3-2-1-0	3-2-1-0	3-2-1-0	4-1-2-2	4-1-2-2	4-1-1-1	4-1-1-1	5-1-0-0	5-1-0-0	5-1-0-0	5-1-2-2	5-1-2-2	5-1-2-2	5-1-2-2
UTU	Apr 21	5-1-3-3	6-1-5-2	6-1-5-2	6-0-0-0	6-0-0-0	6-0-0-0	6-0-0-0	4-3-2-2	4-3-2-2	4-1-1-1	4-1-1-1	5-0-0-0	5-0-0-0	5-0-0-0	6-2-2-0	6-2-2-0	6-2-2-0	6-2-2-0
UNC	Apr 25	5-2-2-4	5-2-2-4	5-2-2-4	5-2-2-1	5-2-2-1	5-2-2-1	5-2-2-1	5-1-2-0	5-1-2-0	5-2-3-0	5-1-1-2	5-0-0-0	5-0-0-0	5-0-0-0	4-2-2-1	4-2-2-1	4-2-2-1	4-2-2-1
UNC	Apr 25	5-0-1-2	4-1-3-2	4-1-3-2	5-2-2-1	5-2-2-1	5-2-2-1	5-2-2-1	4-1-1-1	4-1-1-1	5-2-3-0	5-1-1-2	6-3-4-2	6-3-4-2	6-3-4-2	4-2-2-1	4-2-2-1	4-2-2-1	4-2-2-1
UNC	Apr 25	5-0-2-0	4-1-1-2	4-1-1-2	5-2-2-3	5-2-2-3	5-2-2-3	5-2-2-3	3-2-2-0	3-2-2-0	5-2-3-0	5-1-3-2	4-2-3-2	4-2-3-2	4-2-3-2	4-2-2-1	4-2-2-1	4-2-2-1	4-2-2-1
MINOT	Apr 28	5-1-2-1	5-1-2-1	5-1-2-1	4-2-2-1	4-2-2-1	4-2-2-1	4-2-2-1	3-0-0-1	3-0-0-1	3-0-0-1	5-1-1-1	5-1-1-1	5-1-1-1	5-1-1-1	4-2-3-0	4-2-3-0	4-2-3-0	4-2-3-0
MINOT	Apr 29	4-0-1-0	4-0-1-0	4-0-1-0	3-0-0-0	3-0-0-0	3-0-0-0	3-0-0-0	2-0-1-1	2-0-1-1	2-1-0-0	3-1-1-3	3-1-1-3	3-1-1-3	4-1-2-0	4-1-2-0	4-1-2-0	4-1-2-0	4-1-2-0
MINOT	Apr 29	3-2-1-2	1-0-0-0	1-0-0-0	5-2-2-2	5-1-0-1	5-3-3-0	5-3-3-0	5-2-2-0	5-2-2-0	5-2-4-2	5-3-4-7	4-3-4-1	4-3-4-1	1-1-1-0	1-1-1-0	1-1-1-0	1-1-1-0	1-1-1-0
SMSU	May 01	1-0-1-1	4-0-2-2	4-0-2-2	4-1-1-0	4-2-3-2	2-1-0-0	2-1-0-0	3-2-1-0	3-2-1-0	5-0-1-0	2-2-0-0	2-2-0-0	2-2-0-0	3-0-3-2	3-0-3-2	3-0-3-2	3-0-3-2	3-0-3-2
SMSU	May 01	2-0-1-0	4-0-2-1	4-0-2-1	4-0-0-0	4-0-0-0	4-0-0-0	4-0-0-0	3-1-0-0	3-1-0-0	3-0-0-0	3-0-0-0	4-0-2-0	4-0-2-0	4-0-2-0	4-0-2-0	4-0-2-0	4-0-2-0	4-0-2-0
SCSU	May 03	3-0-0-0	4-1-2-1	4-1-2-1	3-0-1-0	3-0-1-0	3-0-0-0	3-0-0-0	3-0-0-0	3-0-0-0	2-0-1-0	2-0-1-0	4-0-2-1	4-0-2-1	4-0-2-1	4-2-2-1	4-2-2-1	4-2-2-1	4-2-2-1
SCSU	May 03	2-0-0-1	4-0-0-0	4-0-0-0	3-0-1-0	4-0-0-0	4-0-0-0	4-0-0-0	3-0-0-0	3-0-0-0	4-1-3-0	4-0-1-0	4-0-1-0	4-0-1-0	3-0-0-0	3-0-0-0	3-0-0-0	3-0-0-0	3-0-0-0
SCSU	May 05	3-0-1-0	4-2-2-0	4-2-2-0	3-0-0-0	4-0-1-0	4-0-1-0	4-0-1-0	3-0-0-0	3-0-0-0	4-1-3-3	3-0-0-1	3-0-0-1	3-0-0-1	3-1-1-0	3-1-1-0	3-1-1-0	3-1-1-0	3-1-1-0
SCSU	May 05	4-0-1-0	5-1-1-0	5-1-1-0	3-0-0-0	4-0-0-0	4-0-0-0	4-0-0-0	3-0-0-1	3-0-0-1	Def..	3-1-1-1	4-0-1-1	4-0-1-1	4-0-1-1	3-1-1-0	3-1-1-0	3-1-1-0	3-1-1-0



BEMIDJI STATE BASEBALL

Miscellaneous Statistics

Bemidji State University

Miscellaneous Stats for Bemidji State (as of May 07, 2013)

(All games)

MULTIPLE HIT GAMES	2	3	4	5+	Tot
15 Baumann, Lewis...	13	4	-	-	17
24 Purvis, Trevor...	9	8	-	-	17
10 Hanson, Chad.....	10	4	2	-	16
30 Marks, Jaryd.....	11	2	2	-	15
36 Braun, Zach.....	10	2	-	1	13
22 Kalis, Logan.....	5	7	1	-	13
26 Ellinghuysen, Mat	5	6	1	-	12
5 Hanowski, Joey...	6	2	1	-	9
28 Hegarty, Jack....	5	3	-	-	8
20 Hirsch, Riley....	4	2	-	-	6
13 Jenkins, Cody....	2	1	1	-	4
2 Bjorge, Cole.....	1	-	-	-	1
3 Tuholsky, Jake...	1	-	-	-	1
4 Nichols, Gavin...	1	-	-	-	1
TEAM	83	41	8	1	133

MULTIPLE RBI GAMES	2	3	4	5+	Tot
15 Baumann, Lewis...	7	2	1	-	10
26 Ellinghuysen, Mat	6	2	-	1	9
30 Marks, Jaryd.....	8	1	-	-	9
22 Kalis, Logan.....	5	2	-	1	8
24 Purvis, Trevor...	5	2	1	-	8
5 Hanowski, Joey...	3	1	1	-	5
10 Hanson, Chad.....	3	1	1	-	5
36 Braun, Zach.....	4	-	1	-	5
13 Jenkins, Cody....	1	1	-	-	2
28 Hegarty, Jack....	2	-	-	-	2
2 Bjorge, Cole.....	1	1	-	-	2
4 Nichols, Gavin...	-	1	-	-	1
20 Hirsch, Riley....	1	-	-	-	1
TEAM	46	14	5	2	67

HITTING STREAKS	Longest Current	
15 Baumann, Lewis...	14	2
22 Kalis, Logan.....	14	4
24 Purvis, Trevor...	12	2
36 Braun, Zach.....	10	2
5 Hanowski, Joey...	9	-
10 Hanson, Chad.....	7	2
30 Marks, Jaryd.....	7	1
20 Hirsch, Riley....	6	-
26 Ellinghuysen, Mat	6	-
28 Hegarty, Jack....	5	-
4 Nichols, Gavin...	3	-
3 Tuholsky, Jake...	2	-
2 Bjorge, Cole.....	2	1
13 Jenkins, Cody....	2	-
17 Prichard, Steven.	2	2

BEMIDJI STATE BASEBALL



Season/Career Statistics

Bemidji State University
 Individual Season/Career Summary for Bemidji State (as of May 07, 2013)
 (All games Sorted by Batting avg)

Record: 22-20 Home: 2-4 Away: 5-7 Neutral: 15-9 NSIC: 13-13

Player	SEASON														CAREER													
	AVG	GP-GS	AB	R	H	2B	3B	HR	RBI	BB	HBP	SO	SB-ATT	AVG	GP-GS	AB	R	H	2B	3B	HR	RBI	BB	HBP	SO	SB-ATT		
15 Baumann, Lewis...	.397	38-37	131	24	52	14	2	5	33	6	3	29	6-7	.302	155-142	464	75	140	30	4	10	75	27	9	111	12-16		
24 Purvis, Trevor...	.375	39-38	144	31	54	11	1	2	28	20	3	20	8-10	.325	86-84	302	64	98	19	1	5	49	47	8	44	11-14		
22 Kalis, Logan.....	.364	42-42	151	26	55	12	2	5	32	18	6	27	2-2	.334	128-121	443	94	148	27	7	16	96	45	16	70	10-11		
36 Braun, Zach.....	.352	38-36	145	25	51	15	1	2	22	8	1	23	5-6	.354	112-102	379	67	134	31	1	8	75	41	8	59	8-10		
26 Ellinghuysen, Mat	.348	42-42	132	28	46	10	0	0	28	5	21	17	0-1	.287	119-108	338	47	97	22	0	3	56	12	34	50	0-2		
10 Hanson, Chad.....	.331	37-36	148	28	49	6	2	2	20	14	1	34	3-5	.320	89-84	306	70	98	18	4	2	32	41	4	62	5-11		
30 Marks, Jaryd.....	.300	40-40	160	23	48	11	0	3	27	11	1	26	0-0	.320	89-89	344	50	110	23	1	8	67	24	5	57	1-1		
5 Hanowski, Joey...	.295	35-28	112	23	33	4	1	0	19	9	2	8	1-1	.295	35-28	112	23	33	4	1	0	19	9	2	8	1-1		
28 Hegarty, Jack....	.276	28-27	98	19	27	7	0	0	5	4	3	18	0-0	.276	28-27	98	19	27	7	0	0	5	4	3	18	0-0		
20 Hirsch, Riley....	.271	26-25	85	15	23	2	0	0	9	9	1	8	1-4	.267	98-88	285	53	76	4	0	0	29	30	16	36	8-12		

17 Prichard, Steven.	1.000	4-0	2	3	2	1	0	0	0	0	0	0	0-0	.429	7-1	7	3	3	1	0	0	0	0	0	0	0-0		
4 Nichols, Gavin...	.500	7-1	8	4	4	1	0	1	4	1	0	1	0-0	.500	7-1	8	4	4	1	0	1	4	1	0	1	0-0		
3 Tuholisky, Jake...	.333	9-2	15	3	5	0	1	0	2	2	0	2	0-0	.333	11-3	18	4	6	0	1	0	3	3	0	3	0-0		
13 Jenkins, Cody....	.246	20-16	57	12	14	4	1	0	8	7	0	20	1-1	.246	20-16	57	12	14	4	1	0	8	7	0	20	1-1		
2 Bjorge, Cole.....	.192	13-8	26	4	5	2	0	0	7	4	0	6	1-1	.232	27-17	56	6	13	3	1	0	10	6	0	16	1-1		
7 Van Someren, Ryan	.000	1-0	1	0	0	0	0	0	0	0	0	1	0-0	.000	1-0	1	0	0	0	0	0	0	0	0	1	0-0		
19 Bray, Phil.....	.000	1-0	1	0	0	0	0	0	0	0	0	1	0-0	.000	1-0	1	0	0	0	0	0	0	0	0	1	0-0		
16 Stein, Ross.....	.000	1-0	1	0	0	0	0	0	0	0	0	0	0-0	.000	1-0	1	0	0	0	0	0	0	0	0	0	0-0		
14 Hietala, Matt....	.000	2-0	0	0	0	0	0	0	0	0	0	0	0-0	.000	3-0	1	0	0	0	0	0	0	0	0	1	0-0		
Totals.....	.330	42-42	1417	268	468	100	11	20	244	118	42	241	28-38															
Opponents.....	.287	42-42	1291	189	370	81	10	16	165	88	39	301	20-36															

(All games Sorted by Earned run avg)

Player	ERA	W-L	APP	GS	CG	SHO/CBO	SV	IP	H	R	ER	BB	SO	ERA	W-L	APP	GS	CG	SHO/CBO	SV	IP	H	R	ER	BB	SO
22 Kalis, Logan.....	1.53	4-2	10	3	2	1/0	1	35.1	27	11	6	6	37	6.18	13-15	40	28	5	1/0	2	164.2	202	153	113	74	130
19 Bray, Phil.....	2.76	3-3	10	9	1	0/1	0	58.2	54	24	18	19	69	4.59	12-16	44	35	5	1/1	1	209.2	222	135	107	103	207
30 Marks, Jaryd.....	3.10	4-4	8	8	3	0/0	0	52.1	44	21	18	19	46	3.61	8-7	23	15	7	0/0	2	109.2	108	61	44	40	89
7 Van Someren, Ryan	3.68	4-1	13	4	0	0/0	0	36.2	43	20	15	13	30	7.12	9-9	49	17	2	0/0	1	144.0	215	133	114	63	84
27 Campbell, Miles..	4.35	1-1	11	6	0	0/0	1	41.1	46	21	20	6	37	5.56	6-6	33	19	1	0/0	2	134.1	180	95	83	32	102
9 Anderson, Ryan...	7.01	2-5	9	9	1	0/0	0	43.2	63	43	34	9	23	8.19	5-14	40	25	2	0/0	0	151.2	238	161	138	57	88

44 Saeugling, Tyler.	0.00	0-0	1	0	0	0/0	0	1.0	4	2	0	1	0	0.00	0-0	1	0	0	0/0	0	1.0	4	2	0	1	0
28 Hegarty, Jack....	3.52	2-0	10	0	0	0/0	2	23.0	28	11	9	2	23	3.52	2-0	10	0	0	0/0	2	23.0	28	11	9	2	23
51 Brezinski, Ryan..	5.60	2-1	12	1	0	0/1	0	17.2	22	11	11	2	16	4.02	5-4	26	3	0	0/1	2	47.0	52	29	21	26	36
40 Katz, Jesse.....	7.20	0-0	2	0	0	0/0	0	5.0	9	4	4	2	2	7.20	0-0	2	0	0	0/0	0	5.0	9	4	4	2	2
16 Stein, Ross.....	8.68	0-2	6	2	1	0/0	0	18.2	28	20	18	9	17	10.22	0-3	15	3	1	0/0	0	37.0	61	48	42	24	27
8 Heisick, Nate....	9.00	0-0	1	0	0	0/0	0	1.0	2	1	1	0	1	9.00	0-0	1	0	0	0/0	0	1.0	2	1	1	0	1
Totals.....	4.15	22-19	42	42	8	2/1	4	334.1	370	189	154	88	301													
Opponents.....	6.34	19-22	42	42	6	3/2	7	335.0	468	268	236	118	241													



BEMIDJI STATE BASEBALL

NCAA Team Statistics Bemidji St. (22-20) Baseball National Ranking Summary Thru Games 05/05/2013

[Back to team selections](#)
[Northern Sun - All Teams](#)

Category	Rank	Actual	National Leader	Actual
Batting Average (300 ranked)	21	0.33	Mo. Western St.	0.364
Scoring (300 ranked)	66	6.4	Benedict	10.1
Runs (300 ranked)	95	268.0	Concord	514.0
Hits (300 ranked)	65	467.0	Concord	632.0
Doubles Per Game (300 ranked)	8	2.38	Winston-Salem	2.58
Doubles (300 ranked)	25	100.0	Mount Olive	130.0
Triples Per Game (300 ranked)	75	0.26	St. Thomas Aquinas	0.6
Triples (300 ranked)	84	11.0	St. Thomas Aquinas	25.0
Home Runs Per Game (300 ranked)	77	0.48	Northeastern St.	1.35
Home Runs (50 ranked)			Northeastern St.	69.0
Slugging Percentage (300 ranked)	32	0.458	Mo. Western St.	0.572
Stolen Bases Per Game (300 ranked)	207	0.67	Benedict	8.15
Stolen Bases (300 ranked)	213	28.0	Benedict	334.0
Base on Balls (300 ranked)	204	118.0	Incarnate Word	253.0
Sacrifice Bunts (300 ranked)	194	19.0	Wilmington (DE)	82.0
Hit by Pitch (300 ranked)	125	42.0	Tarleton St.	114.0
Sacrifice Flies (300 ranked)	91	19.0	Lander	38.0
Earned Run Average (300 ranked)	81	4.15	St. Cloud St.	2.04
Strikeouts Per Nine Innings (300 ranked)	16	8.1	Minn. St. Mankato	9.9
Hits Allowed Per Nine Innings (300 ranked)	116	9.96	St. Cloud St.	6.71
Walks Allowed Per Nine Innings (300 ranked)	6	2.37	St. Joseph's (IN)	1.75
Fielding Percentage (300 ranked)	16	0.97	Minn. St. Mankato	0.98
Double Plays Per Game (300 ranked)	91	0.74	Rollins	1.07
Double Plays (300 ranked)	115	31.0	Arkansas Tech Tarleton St.	51.0 51.0
On Base Percentage (300 ranked)	63	0.393	Benedict	0.473
Strikeout-to-Walk Ratio (300 ranked)	3	3.42	St. Joseph's (IN)	4.22
WL Pct (300 ranked)	115	0.524	Mount Olive	0.882
WHIP (300 ranked)	58	1.37	St. Cloud St.	1.0

BEMIDJI STATE BASEBALL



NCAA Player Statistics

Category	Player	Rank	Actual	National Leader	Actual
Batting Average (150 ranked)	Lewis Baumann Trevor Purvis	72 126	0.389 0.375	Will Kengor, Slippery Rock	0.455
Runs Per Game (100 ranked)				Ryan Lewis, Columbus St.	1.49
Runs (100 ranked)				Ryan Lewis, Columbus St.	70.0
Hits (100 ranked)				Jordan Edgerton, UNC Pembroke	85.0
Doubles Per Game (150 ranked)	Zach Braun Lewis Baumann	37 60	0.39 0.37	Tim Bickford, Bridgeport	0.52
Doubles (100 ranked)	Zach Braun	89	15.0	Dylan Boston, North Ala. Robert Kelly, StAns	24.0 24.0
Triples Per Game (150 ranked)				Travis Moore, WSSU	0.2
Triples (100 ranked)				Travis Moore, WSSU	9.0
Home Runs Per Game (150 ranked)				Kyle Sani, Central Wash.	0.37
Home Runs (100 ranked)				Kyle Sani, Central Wash.	18.0
Runs Batted In Per Game (150 ranked)				Cameron Scott, Columbus St.	1.61
Runs Batted In (100 ranked)				Cameron Scott, Columbus St.	74.0
Slugging Percentage (150 ranked)	Lewis Baumann Logan Kalis	32 131	0.641 0.57	Brian Wuest, Neb.-Kearney	0.815
Total Bases (100 ranked)				Chris Dula, Catawba Nick Sell, Seton Hill	134.0 134.0
On Base Percentage (100 ranked)				David Weber, Benedict	0.625
Stolen Bases Per Game (150 ranked)				Kevin Davis, Benedict	1.57
Stolen Bases (100 ranked)				Kevin Davis, Benedict	58.0
Base on Balls Per Game (150 ranked)				David Weber, Benedict	1.32
Base on Balls (100 ranked)				David Weber, Benedict	54.0
Hit By Pitch Per Game (150 ranked)	Matt Ellinghuysen	9	0.5	Tyler Crabtree, Central Okla.	0.85
Hit by Pitch (100 ranked)	Matt Ellinghuysen	9	21.0	Tyler Crabtree, Central Okla.	39.0
Toughest to Strike Out (100 ranked)	Joey Hanowski	88	14.0	Joe O'Donnell, Caldwl	48.0
Sacrifice Bunts Per Game (150 ranked)				Evan Robinson, Tarleton St.	0.38
Sacrifice Bunts (100 ranked)				Evan Robinson, Tarleton St.	19.0
Sacrifice Flies (100 ranked)				Jocquese Brunson, Benedict Joseph Eusebio, CPPom Will Kengor, Slippery Rock Brett Moreland, Flagler Rai Robinson, Lenoir-Rhyne Cameron Scott, Columbus St.	8.0 8.0 8.0 8.0 8.0 8.0
Earned Run Average (150 ranked)				Glenn Wallace, Sonoma St.	0.86
Victories (100 ranked)				Alex Regan, Mount Olive	13.0
Saves (100 ranked)				Kyle Renaud, Mo.-St. Louis	15.0
Strikeouts Per Nine Innings (150 ranked)	Phil Bray	24	10.59	David Ledbetter, Cedarville	13.99
Strikeouts (150 ranked)	Phil Bray	71	69.0	Nick Lomascolo, Catawba	123.0
Hits Allowed Per Nine Innings (100 ranked)				Robert Frank, St. Thomas Aquinas	4.38
Walks Allowed Per Nine Innings (100 ranked)				Joe Candelmo, Mansfield	0.14
Strikeout-to-Walk Ratio (100 ranked)				Joe Candelmo, Mansfield	55.0
WHIP (100 ranked)				Glenn Wallace, Sonoma St.	0.75
Complete Games (20 ranked)				Brannon Easterling, St. Edward's	12.0
Games Started (20 ranked)				Paul Hvozdovic, Shepherd	16.0

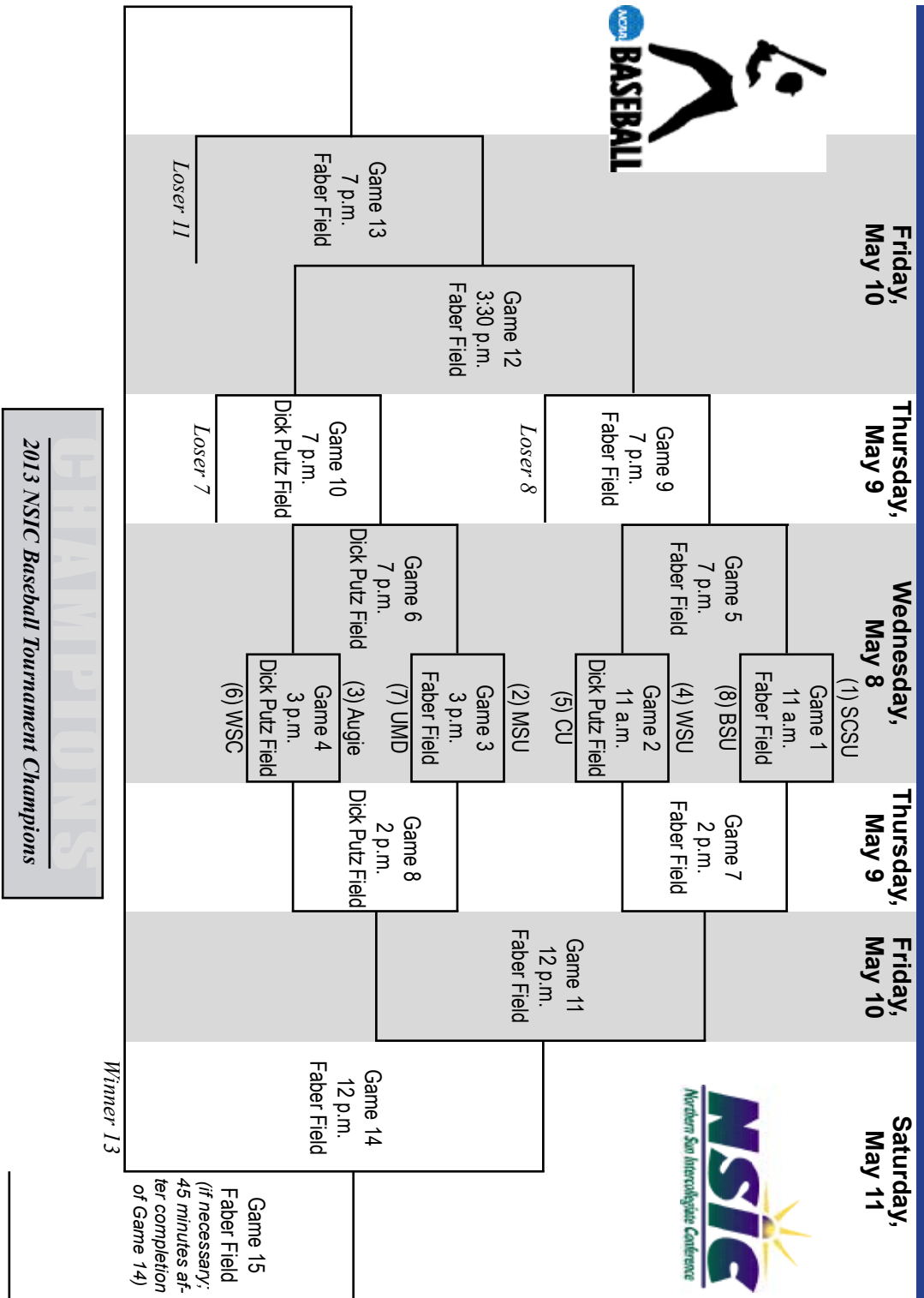


BEMIDJI STATE BASEBALL

NSIC Tournament Bracket



2013 NSIC BASEBALL TOURNAMENT BRACKET



2013 NSIC Baseball Tournament Champions

